



HAL
open science

Beyond average energy consumption in the French residential housing market: A household classification approach

Emmanuel Hache, Déborah Leboullenger, Valérie Mignon

► **To cite this version:**

Emmanuel Hache, Déborah Leboullenger, Valérie Mignon. Beyond average energy consumption in the French residential housing market: A household classification approach. 2016. hal-02475511

HAL Id: hal-02475511

<https://ifp.hal.science/hal-02475511v1>

Preprint submitted on 12 Feb 2020

HAL is a multi-disciplinary open access archive for the deposit and dissemination of scientific research documents, whether they are published or not. The documents may come from teaching and research institutions in France or abroad, or from public or private research centers.

L'archive ouverte pluridisciplinaire **HAL**, est destinée au dépôt et à la diffusion de documents scientifiques de niveau recherche, publiés ou non, émanant des établissements d'enseignement et de recherche français ou étrangers, des laboratoires publics ou privés.



**Beyond average energy consumption
in the French residential housing market:
A household classification approach**

**Emmanuel HACHE
Déborah LEBoulLENGER
Valérie MIGNON**

Avril 2016

Les cahiers de l'économie - n° 103

Série Recherche

emmanuel.hache@ifpen.fr

La collection "Les cahiers de l'économie" a pour objectif de présenter des travaux réalisés à IFP Énergies Nouvelles et à IFP School, travaux de recherche ou notes de synthèse en économie, finance et gestion. La forme peut être encore provisoire, afin de susciter des échanges de points de vue sur les sujets abordés. Les opinions émises dans les textes publiés dans cette collection doivent être considérées comme propres à leurs auteurs et ne reflètent pas nécessairement le point de vue d' IFP Énergies Nouvelles ou d' IFP School.

Pour toute information sur le contenu, prière de contacter directement l'auteur.
Pour toute information complémentaire, prière de contacter le Centre Économie et Gestion: Tél +33 1 47 52 72 27

The views expressed in this paper are those of the authors and do not imply endorsement by the IFP Energies Nouvelles or the IFP School. Neither these institutions nor the authors accept any liability for loss or damage incurred as a result of the use of or reliance on the content of this publication.

Beyond average energy consumption in the French residential housing market: A household classification approach[♦]

Emmanuel HACHE^a, Déborah LEBoulLENGER^{a,b,c} and Valérie MIGNON^{b,d*}

Abstract

The need to reduce Green House Gases emissions has jointly lead to increasing concerns regarding the efficiency of national mitigation agendas and the potential exposure of certain households to energy poverty. Hence, the comprehension of the key determinants that influence the energy demand appears to be crucial for the effectiveness and fairness of energy policies. We particularly consider that targeting specific households' groups rather than looking for a unique national target level of energy consumption would be more effective. This article explores the scope of having a disaggregated energy consumption market to design policies aimed at curbing residential energy consumption or lowering its carbon intensity. Using a clustering method based on CHAID (Chi Square Automatic Interaction Detection) methodology, we find that the different levels of energy consumption in the French residential sector are related to socio-economic, dwelling and regional characteristics. Then, we build a typology of energy-consuming households where targeted groups (fuel poor, high income and high consuming households) are clearly and separately identified through a simple and transparent set of characteristics. This classification represents an efficient tool for energy efficiency programs and energy poverty policies but also for potential investors, which could provide specific and tailor-made financial tools for the different groups of consumers. Furthermore, our approach is helpful to design an energy efficiency score that could reduce the rebound effect uncertainty for each identified household group.

Keywords: Energy consumption, residential sector, clustering method, France.

JEL Classification: Q48, I32, C38.

[♦] We are grateful to Alain Tourdjman and two anonymous referees for insightful comments and suggestions. Any remaining errors are ours. The views expressed in this paper are those of the authors and do not necessarily reflect those of IFP Énergies Nouvelles, EconomiX, or BPCE-SA.

^a IFP Énergies Nouvelles, 1-4 avenue de Bois Préau, F-92852 Rueil-Malmaison, France.

^b EconomiX - CNRS, University of Paris Ouest, France.

^c BPCE-SA, Paris, France.

^d CEPII, Paris, France.

* *Corresponding author:* EconomiX-CNRS, University of Paris Ouest, 200 avenue de la République, F-92001 Nanterre Cedex, France. Tel.: +33 1 40 97 58 60; fax: +33 1 40 97 77 84. Email: valerie.mignon@u-paris10.fr.

1. Introduction

Residential and tertiary sector represents about 45% of global energy consumption in France and 21% of CO₂ emissions in 2012.¹ This sector consumes more energy than any other sector in the country (31% for transport, 21% for industry, and less than 3% for agriculture) and within the sector, the residential part accounts for 60%. The residential sector is consequently considered as a key driver for energy efficiency programs—such as insulation—and more generally for energy policy. Energy consumption in private houses stems from three main usages: space heating (70% of the total expenditures), hot water and cooking (15%) and specific electricity use² (15%). Moreover, the promotion for energy efficiency in residential building is mainly based on conventional and modeled consumption³ that does not take into account thoroughly and narrowly the households' characteristics and the effective behaviors in order to offer a comparable set of energy efficiency measures on buildings.

Table 1. Descriptive statistics depending on households' characteristics, dwelling type and heating technology in 2006

		Observation number	Energy annual expenditures	Annual global income	Energy budget share	Energy expenditures per person
Houses	Gas Heated	6 420	1 294.00 €	31 651.50 €	4.02%	490.00 €
	Electricity Heated	5 298	1 250.00 €	30 506.50 €	4.01%	475.00 €
	Median Houses	20 661	1 200.00 €	27 720.00 €	4.25%	447.00 €
Flats	Gas Heated	6 695	700.00 €	19 063.00 €	3.51%	334.67 €
	Electricity Heated	4 137	709.00 €	16 710.00 €	4.05%	403.00 €
	Median Flats	17 482	600.00 €	18 020.00 €	3.33%	300.00 €
Total Average		38 143	891.00 €	22 722.00 €	3.75%	385.00 €

Source: National Institute of Statistics and Economic Studies (INSEE).

¹ Source: French Ministry of Ecology, Sustainable Development and Energy.

² This usage is growing at a very high rate as households and houses are more and more connected, and the appliances evolve toward high technology and multimedia services.

³ See French Environment and Energy Management Agency.

A cross-tabulated analysis enlightens us on the heterogeneity and variability of French households' energy consumption given dwelling types, but also income and other households' characteristics and location choice (urban versus rural zones). The annual energy bill differs greatly whether the household in collective dwellings can have access to a gas infrastructure or not. In fact, in the case of flats, gas-heated households appear to have a lower annual global energy bill, but also a lower energy budget share (Table 1). It is also worth noticed that gas-heated households have a higher annual income than average and electrically-heated households.

Specifically, our goal in the present paper is to address this question of heterogeneity in energy consumption in France by relying on a disaggregated-level analysis. In this regard, household group classification can be useful to tackle the rebound effect and the nonlinear demand for energy services. The "take-back" or "rebound effect"⁴ refers to an increase in the supply of energy services with a corresponding decrease in the effective price, the size of which depends upon the underlying cost structure (Greening et al., 2000). When energy efficiency measures do not take into account the gap between expected and actual consumptions, they might face some rebound effect. It has been observed in the transportation sector and also in the residential one. Regarding space heating for example, the estimated rebound effect in the economic literature ranges from 10% to 30% (Dubin et al., 1986; Greening et al., 2000). Hence, the rebound effect highlights the importance of getting detailed information on household revenue level or income path. The total income sets a budget constraint that drives directly the quantity of energy service consumed and its evolution with price and income path *via* demand elasticity. In addition, it determines the implicit discount rate at which households make investment decisions for equipment (Hausman, 1979) or energy efficiency strategies (Hasset and Metcalf, 1993). In France, energy efficiency programs exist for example for modest and old landlords in old dwellings (National Housing Agency programs), but there is no specific policy for the other groups. Wide-ranging policies are preferred such as subvention for energy efficiency financing (zero interest rate loans) or tax cuts (tax credit for sustainable development and tax credit for energy transition).

⁴ The rebound effect—also called the "Jevons Paradox"—was highlighted in 1865 by William Stanley Jevons within its famous book entitled "The Coal Question". This ecological paradox describes the non-expected consequences in terms of natural resources consumption resulting from a refinement of a technological process. Thereby the implementation of an improved technology through a more efficient energy process can paradoxically lead to an increase in energy consumption. The widespread use of the technology, the diminution of the incentives to rationalize energy consumption, the decrease in unit price for energy services and the revenue effect observed through energy efficiency gains can explain the rebound effect (Khazzoom, 1980).

The rebound effect can take two forms. The direct rebound effect is when households decide to consume more of the energy service after a decrease in price created by the household reallocation of the extra revenue to more comfort or other energy services. The indirect rebound effect is when households dedicate their extra revenue to the consumption of other goods, services and factors of production that also require energy for their provision (Khazzoom, 1980). As for some empirical estimates, recent studies have shown that the rebound effect varies whether the substituted service is low-carbon intensive (estimated rebound in the UK of 12%), “behavior as usual” (34% rebound) or carbon intensive. The latter case even produces backfire effect (Druckman, 2011). Empirical literature usually relies on the price elasticity to measure the direct rebound effect, but Sorrell and Dimitropulos (2008) argue that this method, whether it is used on cross-sectional or historical variation, can lead to overestimation of the rebound. This overestimation is notably due to asymmetry in energy elasticities’ estimates and collinearity (Baker and Blundell, 1991). Being aware of these methodological problems, we go further from the previous literature and derive energy consumption from the classification of household groups. Group specification indeed overcomes the nonlinear and collinear relationship between demand and income, and provides a solid outline regarding shifts of the Engel curves⁵ according to demographics and household groups.

Disaggregated demand analysis allows us to tackle the issue related to the measures and indicators of fuel poverty in residential housing. In the UK, 80% of the 4 million fuel poor are also vulnerable households (Department of Energy and Climate Change; DECC, 2009). The latter can be divided in three categories: low revenue (below 60% of the median income), elderly, allocation benefit households and single parents. Every households’ group has an increased vulnerability to fuel price rises as they spend a larger amount of their revenue on energy bills (Hills, 2012). Each group also has very heterogeneous energy consumption habits (Jamasb and Meier, 2011). The main factors that determine fuel poverty in Europe are primarily related to the housing location since the region’s climate plays a key role in the ability to adequately heat a home, along with the level of urbanization (Thomson and Snell, 2013). While there are on average similitudes in the fuel poverty rate between rural and urban households, the impact of specific dwelling and sociodemographic aspects combined reveals

⁵ Engel curve describes how a consumer's purchases of a good like food varies as the consumer's total resources such as income or total expenditures vary. Engel curves may also depend on demographic variables and other consumer characteristics. A good's Engel curve determines its income elasticity, and hence allows us to classify the good as inferior, normal, or luxury depending on whether the income elasticity is respectively negative, inferior to unity or greater than unity.

critical differences. Although urban households are more likely to spend more time in fuel poverty, rural households are expected to fall into worsened levels of fuel poverty (Hills, 2012), and are more vulnerable to fuel prices especially when they live in private rental accommodations (Roberts et al., 2015).

As stressed above, our aim in this paper is to account for heterogeneity in energy consumption by relying on a disaggregated energy consumption analysis of the French households. Our contribution to the existing literature is threefold. First, while the bulk of the empirical literature is based on microeconomic tools as price elasticity, we rely on a clustering approach—the Chi Square Automatic Interaction Detection (CHAID) approach—allowing us to identify the main drivers of households’ energy consumption. Second, we propose a detailed typology of households based on a transparent set of characteristics. Third, thanks to our classification, we provide recommendations to improve energy efficiency programs by giving more appropriate and detailed information on the residential housing market than the usual simple average household energy consumption analysis.

The rest of the paper is organized as follows. Section 2 briefly reviews the existing literature. The data and methodology are described in Section 3. Section 4 presents our main results and related comments, while Section 5 summarizes our findings and provides policy recommendations.

2. Review of literature

Energy demand is a latent variable derived from a set of characteristics that can be divided in three types: household characteristics (such as income, family type, living habits or comfort needs), dwelling characteristics (such as size and type), and exogenous factors such as the local energy mix (especially whether households have access to city gas or not). Let us now survey the economic literature on these different issues.

2.1. Income and prices

There are as many demand elasticities in the space heating demand as there are different types of fuel available. In addition, income and price elasticities change with both time and income levels. As a normal good, an increase in energy prices should trigger a reduction in

households' energy demand level by using less energy services (they can lower the temperature at home) or substituting other inputs for energy and choosing less energy-intensive appliances or even homes. While the first arbitrage can be realized in the very short run, the second one requires a sharp investment in capital and is only possible in the medium term (new heating system) or in the long run (change location and home). The relationship between budget share and income has several shortcomings (Blundell et al., 2014): demands for commodity are nonlinear with income and the Engel curve is well known to differ by demographic type across households. Using a panel data modeling, Jamasb and Meier (2010) find that the energy consumption behavior of UK households heavily depends on income level. The authors describe the Engel revenue path for households' energy consumption to be slightly S-shaped. Energy spending globally increase with income, but its magnitude augments accordingly to income thresholds as it reflects the changing nature of consumption of energy, electricity, and gas when income changes. Energy is used for necessity needs at low income levels and is enriched for higher incomes (Meier et al., 2013).

Income level could also be considered as a proxy for assessing a specific degree of comfort and the intensity factor among households. As income rises, households tend to exhibit preferences for less energy-intensive housing and appliances as they do not want to sacrifice any comfort in an energy price increase context. In recent French and UK studies (Druckman and Jackson, 2008; Cayla et al., 2011), the relation between income and comfort level describes a factor 2 difference between the levels of comfort for the 10% poorest and the 10% richest households. In fact, the gap between expected and real consumption can reach up to a 65% overestimation of energy consumption compared to a model including intensity factor which is mainly driven by energy budget share, behavioral factors (elasticities and rebound effect), and non-standardized space heating management (Cayla et al., 2010). The consecutive actual over normative ratio is used to measure a level of comfort that approaches the notion of service factor developed by Haas and Biermayr (2000).

2.2. Households' characteristics

Other socio-economical characteristics play a major role in the actual energy consumption in residential building. Households' characteristics appear to influence at least 33% of energy consumption variations (Sonderegger, 1977; Cayla et al., 2010), among which household's tenure and composition are two major ones. The effect of occupant characteristics might be

larger than expected, since they determine the type of dwelling (Guerra Santin et al., 2009). The presence of learning effect toward more efficient energy use is also important, although results regarding the effect of age are not clear cut in the literature, being sometimes significantly associated (Meier and Rehdanz, 2010) and sometimes less obviously associated with different levels of energy consumption (Wyatt, 2013). The size of the household and its composition influence the choice of the heating system type. Family size is negatively related with electric heating (Vaage, 2000; Braun, 2010). This latter is more suitable for small and active households who tend to spend less time at home. Household tenure is also playing a significant role. Ownership lowers the energy price vulnerability as households who own their housing are more likely to have more energy efficient houses (Rehdanz, 2007). Property owners and tenants react differently to income and energy prices changes (Meier and Rehdanz, 2010). Level of comfort is also a key explanation when investigating the elderly and more vulnerable household groups. Indeed, elderly people, but also families with small children, require an increased level of comfort that might trigger higher levels of energy consumption (Meier and Rehdanz, 2010). On the other hand, very poor households can use comfort as an income arbitrage: they choose less energy expenditures but a decreased level of comfort (low room temperature or fewer heated surface) (Devalière et al., 2011).

2.3. Dwelling type and regional characteristics

Dwelling characteristics are also major factors: the age, the size and floor area of the housing play a significant role as well as its degree of detachment that increases the energy use (up to dwelling of 100m²) (Wyatt, 2013). The impact of the dwelling type reveals in many studies the strong correlation between dwelling characteristics, income and tenure. Owners tend to live in detached or semi-detached houses, whereas flats are mainly rented. As such, if heating expenditures are mainly due to differences in the types of dwelling, comparing owner and renter heating expenditures for one type of dwelling (flats or houses) does not always lead to different results (Meier and Rehdanz, 2010). Regional and geographic location can play a significant role; for example, there is a gap in terms of space heating modes between East and West Germany (Braun, 2010) or rural and urban households in the UK (Roberts et al., 2015). The fact that households live in a cold area leads to higher heating expenditures, regardless of the weather because those households have a better heating equipment and they experience an increased level of comfort during cold days (Meier and Rehdanz, 2010; Cavailhès et al., 2011).

Why do we need a segmentation analysis for energy expenditures in the residential housing market? Studies that analyze energy consumption at an individual level basis are usually of two types: discrete (demand for appliances) or continuous (demand for the energy itself) models, or conditional demand.⁶ Another approach to energy demand modeling is to specify the average relationship between energy expenditures and households' characteristics as nonlinear and assign an energy expenditure level probability to a homogenized household group where each agent within the group is supposed to have the same energy consumption level. Analyzing the relationship between income and domestic fuel use, Druckman and Jackson (2008) compare the results for two levels of regional disaggregation (national and local) and different types of households by using the Local Area Resource Analysis (LARA) model. In this study, household groups' segmentation comes directly from the Output Area Classification constructed by Vickers and Rees (2007) based on geographic and socio-economic characteristics. They highlight the relevance of a disaggregated approach, evidencing many groups with specific energy consumption habits showing that: (i) households in cities spend the lowest proportion of disposable income on fuels, and (ii) "City Living" but also "Typical Traits and Prospering Suburbs" are groups that may be called "fuel rich" as they spend the lowest share of their income in fuel, their long-run price elasticity of demand being therefore inelastic. Following the same motivation and relying on a clustering method, the Centre for Sustainable Energy OFGEM program (2014) finds a total of 12 energy consumer archetypes regarding gas and electricity consumption for UK households in 2010 and 2014 with the following influencing characteristics: heating fuel, income, household type, region, tenure and urban density—the set of predictors differing for gas and electricity consumption.

3. Data and methodology

3.1. Data

We rely on individual household-level data extracted from the 2006 housing survey conducted by the French national statistics bureau⁷ on households in their housing. The

⁶ For discrete and continuous models, see, e.g., Dubin and McFadden (1984) on US data, and Nesbakken (2001) on Norwegian data. Turning to the conditional demand approach, see Parti and Parti (1980) for the US, Baker et al. (1989) and Meier and Redhanz (2010) for the UK, and Redhanz (2007) for Germany.

⁷ The detailed results of the housing survey can be found on the website of the National Institute of Statistics and Economic Studies (INSEE) : <http://www.insee.fr/en/default.asp>

survey describes the income, housing characteristics and energy consumption habits of 42 963 French households. Although the number of observations is rich enough to describe accurately the French households' energy and housing habits, there exists an acknowledged bias that underestimates the poorest section of the population that is trickier to include in such national survey (data collection issue). Also, energy expenditures are only reported for households with individual heating (i.e., 90% of the landlords' population, but only 64% of the tenants) as energy detailed expenses are more identifiable. After clearing the data to account for this underestimation bias, we lose 4820 observations, i.e. 11% of the original dataset.

We consider three types of variables of interest: energy expenditures, energy budget share and global income all measured annually (see Tables 1 and 2, and Appendix 7.1 for detailed descriptive statistics). As for explanatory variables, space heating consumption is a well behaved proxy for short-term elastic residential consumption. Indeed, it accounts for 70% of the residential energy demand and offers a handy flexibility that helps capture consumption variations across households as we frequently observe a 10-30% rebound effect (Greening et al., 2000). We also focus on the energy budget share because we consider it as a good measure of fuel poverty. We analyze energy spending, elasticities and expenditures distribution across homogeneous groups of households and propose another indicator for fuel vulnerability and poverty.

3.2. Methodology: CHAID method

We use the Chi Square Automatic Interaction Detection (CHAID) method⁸ developed by Kass (1980) to analyze the annual energy consumption of French households in the residential sector. The CHAID method stems from the popular data mining technique AID (Automatic Interaction Detection) and is mostly used in survey datasets for segmentation analysis. This technique of tree growing—also known as “hierarchical splitting”, “partitioning”, “group dividing” or “segmentation”—is widely used in strategic marketing for partitioning data into homogeneous groups in terms of the response variable.⁹ Its aim is not necessarily to improve

⁸ See Appendix 7.2 for a summarized description.

⁹ First tree growing methods have been identified by Belson (1959), and Morgan and Sonquist (1963). The AID algorithm is a binary regression on a quantitative variable which is the most popular “group dividing” data mining technique. It has been enriched for (i) categorical outcome using a so-called theta criterion (THAID or Theta-AID) thanks to Messenger and Mandell (1972) and Morgan and Messenger (1973), and (ii) for multivariate quantitative outcome variable (MAID).

the prediction power of a linear regression, but to gain better knowledge on how the variables of interest are linked to the explanatory variables beyond the restricted additive influence.¹⁰ In our case, we want to test whether our understanding of the French households' energy consumption and expenditures in the residential sector is improved when using disaggregated prism rather than an average national measure.

The different phases of the methodology are sequenced as follows:

1. We determine the key predictors of mean and median energy consumption levels. They might be socio-demographic or dwelling characteristics and localization, or exogenous factors such as climate and unobserved effects. To this end, we use both Multiple Correspondence Analysis (MCA) and logistic regression.
2. We implement the CHAID method to hierarchize and group energy consumption levels with respect to the key predictors in order to start a households' typology regarding their energy consumption.
3. We test the value of emerging archetypes (changing the dependent variable and/or key predictor variables).
4. We feed the archetypes into the complete dataset and enrich the profile analysis (with frequency and MCA-based tests).
5. We analyze specified groups (coupling key leverages for successful efficiency programs) and present the findings and policy implications.

It is worth mentioning that the predictors are allowed in the method to be either monotonic (relying on an ordinal scale) or free (purely nominal) as in AID, but the main novelty is the development of a floating predictor. The latter allows one category of an ordinal variable to

¹⁰ "Particularly in the social sciences, there are two powerful reasons for believing that it is a mistake to assume that the various influences are additive. In the first place, there are already many instances known of powerful interaction effects - advanced education helps a man more than it does a woman when it comes to making money, [...] Second, the measured classifications are only proxies for more than one construct. [...] We may have interaction effects not because the world is full of interactions, but because our variables have to interact to produce the theoretical constructs that really matter." (Morgan and Sonquist, 1963).

have an unattributed ergo unknown position on the ordinal scale, which is highly convenient when dealing with a missing category which is frequent with microeconomic survey data. The CHAID technique aims at maximizing the homogeneity of each group by means of purity measures using a floating predictor which has been proved to be most useful in micro-econometrics.

Let us now briefly compare the CHAID approach with the main other techniques. Consider first AID-based methods. Ritschard (2010) describes two CHAID features that contribute to its popularity. First, CHAID selects the predictors on the basis of the optimal split each potential predictor would produce at each node (continual significance). Whereas AID selects the “most explanatory” split, CHAID would rather choose the “most significant” one. Second, CHAID uses p-values with a Bonferroni correction as splitting criteria. It is a statistical significance test that accounts for multiple testing. There exist other decision-tree methods like THAID or MAID; the main difference lies in the definition and parameterization of the splitting criteria: residual sum of squares (RSS, or “within” sum of squares) for AID, generalized RSS for MAID, theta for THAID, and Fisher or its Chi-square approximation significance test (p-values with a Bonferroni correction) for CHAID.

Second, unlike the CART (Classification And Regression Tree) method, the CHAID analysis does not allow for continuous variables in the model. It therefore exposes the analyst that arbitrary splits a continuous variable himself to misspecification costs, but this argument is weak when the chosen categories for a continuous variable are of value themselves. For instance, when we split energy consumption in deciles, we allow for an easier comparison with other relevant decile categories like revenue or budget. Comparing CART and CHAID analyses, Haughton and Oulabi (1993) found that the two models yield very close results and highlight three main conclusions. Firstly, CHAID model is much more easy and accessible to run with a personal computer. Secondly, CART method is preferable if the model has a very large number of explanatory variables (more than 600), but it is not our case. Finally, when dealing with missing variables, CART is of great advantage when they appear for a continuous variable, but CHAID is preferable when the missing observations are of special significance to the response variable. If the latter is confirmed, one must create a special category of missing values when using CHAID. Overall, given their quite similar performance (despite different statistical techniques), one will use (i) CART if the dataset

contains many continuous variables, and (ii) CHAID for datasets with fewer and categorical explanatory variables, as in our case.

Finally, the third main approach is the logistic regression (McCarty and Hastak, 2007) which provides a response probability on a dichotomous variable. Decision trees segment the dataset into homogeneous groups of people according to a categorical (CHAID) or continuous (CART) variable, the first one being privileged for its predictive power and the latter for its explicative power. Furthermore, as our variable of interest is richer when divided in decile rather than binomial, the CHAID method is preferable. Last but not least, the CHAID method, unlike the logistic approach, is distribution free. It means that it allows the relationship between the explanatory variables and the response variable to be non-monotonic (curvilinear for instance).

Despite its various advantages, four main limits of the CHAID methodology have to be mentioned. First, due to a heuristic approach, the model does not guarantee optimality since it is a forward stepwise method: once a variable is chosen, it cannot be eliminated in a later stage (Van Diepen and Franses, 2006). Hence the trees cannot determine the global importance of each factor. We overcome this limit by running a previous multiple correspondence analysis (MCA) and global significance tests (Fisher) on GLS regressions to select explanatory variables that are globally and individually significant. Second, the tree instability raises two issues. On the one hand, the segments derived by CHAID differ significantly with respect to the criterion. On the other hand, the decision tree stems from random iteration tests and the results (number and criteria selection) can vary when the same model is implemented to another dataset. Consequently, if the original data are replaced with a fresh sample, a different tree may emerge with different splitting rules. In our case, a different CHAID tree for the 2012 housing survey dataset is detrimental, but not catastrophic because it can provide information on a new segmentation that explains new energy consumption behaviors and attests that they have dramatically changed between 2006 and 2012.¹¹ Third, CHAID analysis may encounter over-fitting problems: the predictions of the response variable could be worse than with no model, even if the CHAID tree fits the dataset well. However, this issue can be relativized in our case as we are looking for a way to target households in an existing dataset and to explain energy consumption rather than predict it.

¹¹ The next housing survey of the French National Institute of Statistics and Economic Studies (INSEE) should be published in 2016.

Finally, the CHAID method is mainly intended for large samples (min 1 000 cases; Doyle, 1973). The approach uses the Chi-Square test of independence and therefore assumes that the variables follow a chi-square distribution, a property which is asymptotically verified in large samples such as in our case. On the whole, all those afore mentioned issues are overcome in our analysis, thanks to our methodology and the properties of our dataset.

4. Results

We first describe (Section 4.1) the identified groups resulting from the implementation of the CHAID algorithm and analyze the segmenting variables that feed the model before focusing (Section 4.2) on two selected pen portraits: the fuel poor households and the “high income high energy-consuming” households. Then (Section 4.3), we display the groups in a two-dimension plan in order to realize market segmentation for residential housing. This method highlights potential rebound or back-fire effects as well as windfall effects. Finally (Section 4.4), we investigate the benefits for using a scoring method in order to reduce *ex post* uncertainty for energy efficiency investment.

4.1. Cluster tree

We investigate French households’ global and heating energy annual expenditures, considering a vector of statistically tested¹² variables of three kinds: household’s income and characteristics, dwelling type and main heating technology, and localization features. Our first-step results highlight that the CHAID algorithm separates the households regarding their dwelling type (Figure 1). This result is not surprising because the average energy expenditures double in houses compared to collective dwellings. It also captures most of the variations due to the difference in the dwelling size. Then, the algorithm divides the groups regarding their main heating input between gas, electricity, liquid fuel, coal, wood and other type (see Table 1). We then focus on four main family groups.

Households that live in houses or flats and consume electricity or gas to heat their homes in France account for two third of the heating fuel mix (see Table 2). In a second step, the CHAID algorithm then separates households within these four families into sub-groups of various sizes that are supposed to consume their respective heating fuel homogeneously.

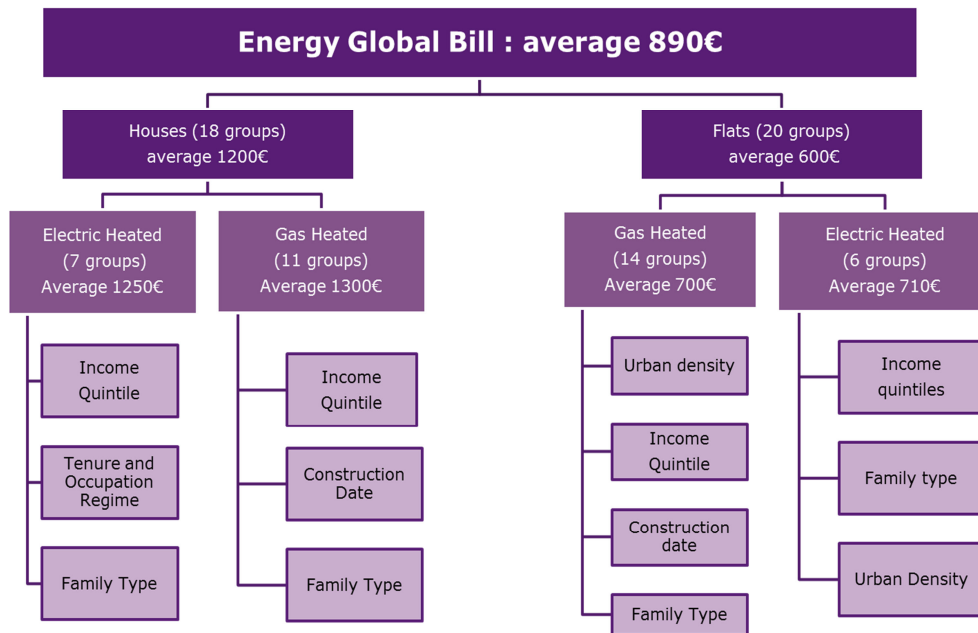
¹² We rely on an ordered logit model to test the goodness of fit of the clustering variables

Table 2. Residential heating fuel type per dwelling type

Main Heating Fuel / Dwelling Type	Sample's Share	Flats	Houses
Gas	37%	48%	52%
Electricity	27%	45%	54%
Fuel	12%	40%	60%
Wood	1.50%	11%	89%
Coal	0.13%	48%	52%
Other/nc	9%	36%	64%
Total	100%	46%	55%

Source: Authors' results.

Figure 1. Final CHAID segmentation tree for French households' energy consumption



Source: Authors' results.

Our analysis leads to identify 18 sub-groups in houses and 20 sub-groups for flat housing (Figure 1). Income quintile appears to be the first segmentation node in three of the main groups out of four, which confirms the strong relationship between income and energy consumption even in a nonlinear approach. The household's family type is also a splitting factor in every main group but at different levels of the tree. It is rather straightforward as the number of active occupants (couple with children or no child, single parent or person) in the household determines the gap between the global budget and the level of heating space required but also the level of comfort needed.

In flats, households (income and family type), dwelling (construction date) and location (urban density) characteristics play a significant role in explaining different levels of energy expenses across households. In gas-heated flats where income appears to be the second node, urban density plays a major role in gas expenses levels. Indeed, gas-heated flats are fueled by collective systems and the access to a gas infrastructure is crucial but unequally distributed between dense cities and more rural areas.

It is also worth mentioning that the construction date is a key splitting factor only for gas-heated groups. One explanation may rely on the global age of the house or flat that determines also the technology of the heating system when it is gas fueled as it is part of the building infrastructure, whereas electric heating is more used as flexible equipment and is not necessarily attached to walls.

Finally, tenure and occupation regime only appears to be a significant node in electric-heated houses. In our group analysis, it is one of the key factors to identify fuel poverty in houses, as we observe that there is a fuel poverty group (hitting the 10% effort rate) among rented electric-heated houses.

4.2. Pen portraits

We chose a selected few key groups to identify the different leverages of action or policy measures that fit each group best. Each CHAID resulting group is analyzed through its median global energy bill, income, electricity and gas expenditures and its energy effort rate. The first household groups that drive our interest are those with a median energy effort that flirt with the fuel poverty rate of 10%. Two groups are in this case, representing 10.5% of the total group population and 3.2% of the whole survey sample. Those are gas- or electricity-heated households living in houses (there was no electricity-heated households with energy share close to the 10% threshold¹³), they bear an energy share of above 9.50% although they have a median annual energy expenditure of 1200€ which is the population median level in houses. What makes them fuel poor is that they have a very low income and both groups belong to the first revenue quartile, putting them together as an energy spending group in the first place. They live in medium size houses (between 60 and 100m²) but old (50-100 years

¹³ Note that this finding does not mean that fuel poverty does not exist in flats, but it is probably hidden by an intensity and/or an intermittence factor.

old houses) for the gas-heated group. Those groups are mostly old couples being more than 50 years old, for 70% of the fuel poor group, or single parents. Most of them are owners (which is reasonable to say vis-à-vis the tenure distribution between houses and flats) but electricity-heated groups are tenants, confirming the importance of the tenure status for this main group. Those groups are defined out of the energy efficiency market and are clearly a target for public policy measures and help.

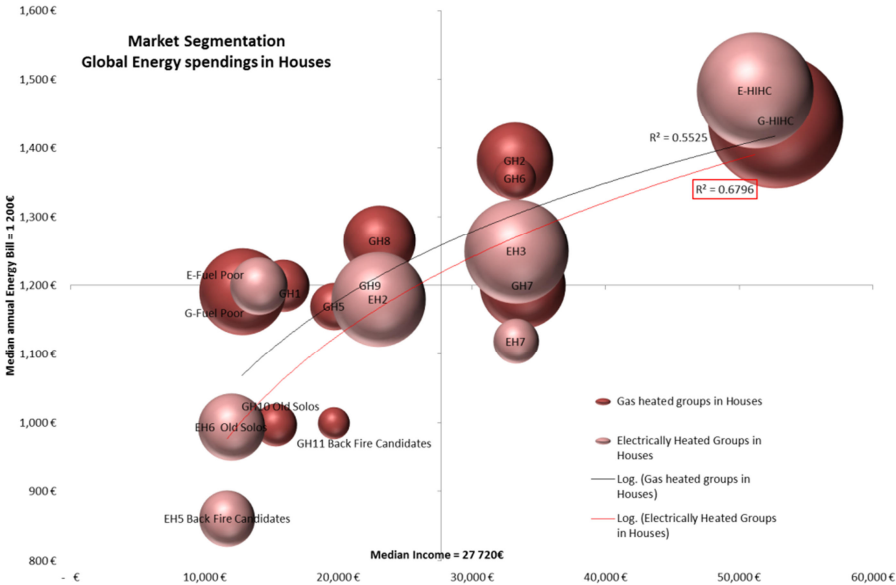
At the opposite, the second group of interest corresponds to “High Income High Consumption” (HIHC) households that could feed a spawning energy efficiency market for private housing. In other words, these are households with high energy expenditures but also high income and the lowest energy share, making them receptive and financially capable of enacting energy efficiency measures on their homes (households’ groups that are in the market). We identify four household groups (31% in houses and 7% in flats) who represent 11% of the whole survey sample. If we focus our interest on households living in flats, we find that they have very low energy effort rate relative to their peers (1.55%-1.65%) that is due to a very high income (HIHC groups belong to the highest income quintile). They also have energy expenditures above the average in flats, that is 850-875€ (vs. 600€). They live in middle to high urban density (gas group) and have big flats: 60-100m² (60%). They are couple or single parent, no children (electricity group), white collars or intermediate professions.

4.3. Market mapping

This section is an attempt to attract the attention of policy makers on the energy policies that can produce mixed results on each households’ group whether they are targeting fuel poverty, energy efficiency or energy savings. Figures 2 and 3 represent our households’ groups dispatched on an income versus global energy expenditure plan with indication of their weight in the sample: the bigger the bubble, the bigger the group in population size (numerical figures are shown in Appendix 7.3). This projection allows us to separate more clearly the groups with respect to an intensity effect (how far are the household’s energy expenditures from the median) and a revenue effect (how far is the household’s annual income from the median). These figures give a visual perspective on the energy policy incentive and potential effects on each group, and emphasize the importance of having a disaggregated-group approach regarding energy policy measures.

The energy efficiency market can be divided in four parts, with from left to right an income-based segmentation and from top to bottom an energy use intensity-based segmentation. First, as we saw that fuel poverty was mainly income poverty in disguise, income is the main driver for energy policies market segmentation. Households with enough revenue to engage energy efficiency investments are said to be “in the market” and will be sensitive to market-based incentives (fiscal tax or cuts, or investments nudges) to trigger energy savings or energy efficiency investments. Households with revenue below median (and among them the fuel poor that earn less than 60% of the median income) cannot afford energy efficiency investments on their homes and are therefore more sensitive to “off market” policy measures such as social benefits, revenue transfers and facility payments. Households’ groups “in the market” are located on the right quadrant, and “off market” households’ groups are located on the left quadrant. Second, the market can be divided vertically given each households’ group’s energy use intensity. Household groups are located top or bottom whether their annual energy expenditures are respectively above or below median for a given housing type. This segmentation is helpful to visually identify potential rebound or backfire effects from household groups that have a low intensity score. In other words, if a household spends twice as less annually than the median household, then it is more likely that the household will use a significant part of the extra revenue from energy efficiency to consume more energy service to meet its comfort basic needs.

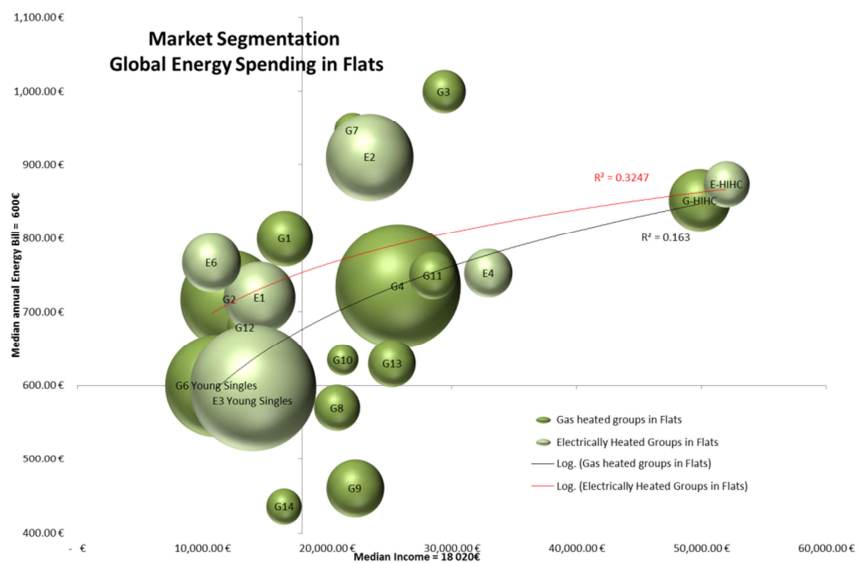
Figure 2. Houses market mapping



Source: Authors' calculations.

First of all, our findings show that group segmentation and sizing differ given the dwelling type. Household groups have relatively homogeneous sizes, and smooth but strong income elasticity. On the one hand, a fair proportion in population size (close to 60% of households living in houses) is located on the right quadrant which makes them good candidates for “market” energy policy incentives. On the other hand, four groups are located on the bottom right of the quadrant, which makes them strong rebound or backfire effect candidates. Surprisingly, those are not the fuel poor group we previously portrayed, and most of them are electric-heated households who face double capital constraint on energy use and equipment. They might have a strong rebound effect as they sacrifice a lot of their comfort to accommodate their budget constraint and therefore consume less than the fuel poor groups.

Figure 3. Flat market mapping



Source: Authors' calculations.

Energy expenditures in flats are driven by other factors than income, such as construction date and dwelling characteristics. In that case, energy policy measures that use dwelling or standards of living-based incentives should be more welcome than pure income incentives.

High consumption and high income household groups located top right of the market quadrant in Figures 2 and 3 can enjoy a windfall effect on the energy efficiency market as they can benefit from subsidies and tax cuts, whereas they already are “in the market” with a strong probability that they could benefit from energy efficiency investments without the help of such public measures. In fact, Charlier (2015) recently discovered that among the fifth decile households, this “dead-weight loss” effect could concern most of the energy efficiency investments on the French residential market. Keeping in mind that the income effect is much stronger in houses (Figure 2) than in flats (Figure 3), households with electric-heated houses are more income sensitive (higher elasticity) than gas-heated houses (Figure 2), making them more sensible to a free-rider rebound effect.

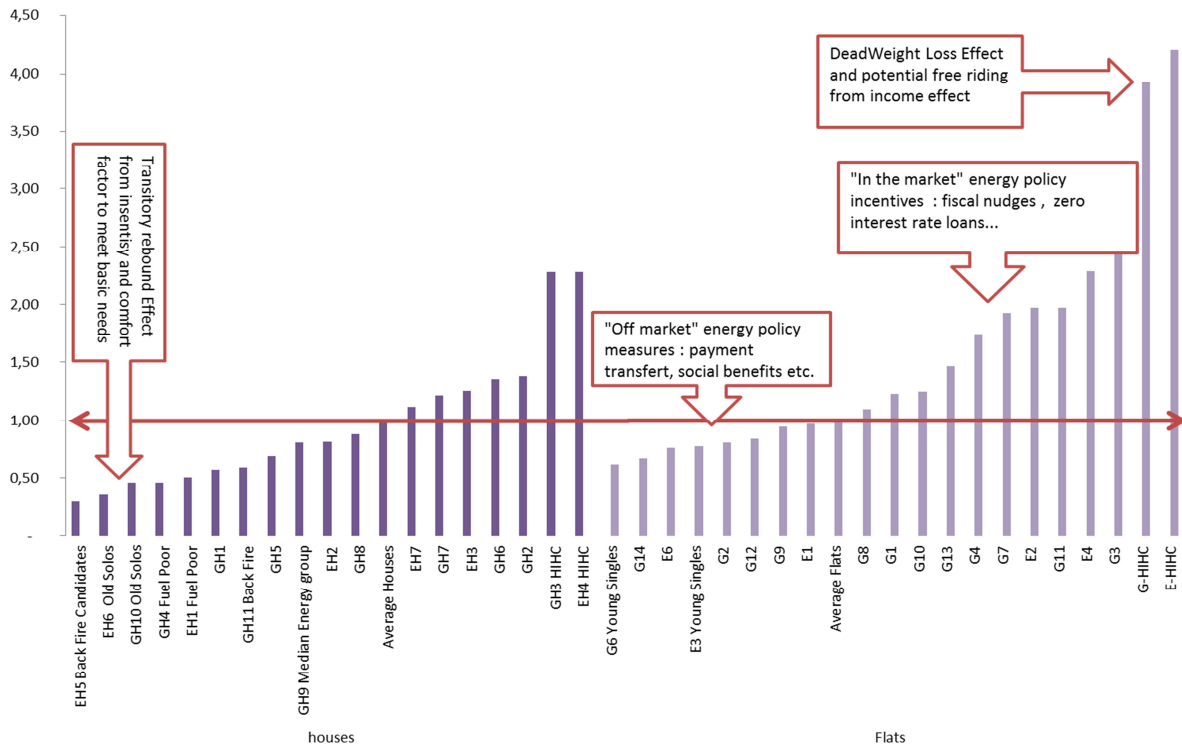
4.4. Energy efficiency distortion score

Nonlinear group analysis is an approach that allows for operational tools such as a scoring analysis that reduces uncertainty about the gap between predicted and real consumptions. Distortion score is a useful tool for financial and insurance mechanism when energy efficiency investments involve more than one economic agent and is subject to information asymmetries and moral hazard. The score can be used for energy efficiency financing contracts based on retrofits cash-flows as it minimizes the outcome interval and reduces information asymmetry between the energy consumer, the investor and the financing agent.¹⁴

The energy efficiency distortion score is a synthesis of two effects: intensity and revenue, calculated on homogeneously distributed households. Relative to the two median groups in houses and flats, half of the groups are expected to have a positive rebound effect on energy efficiency measures (19 groups), and the other half is expected to embrace energy efficiency measures on their homes with positive attitude or even windfall behavior such as HIHC households’ groups especially in flats.

¹⁴ See Appendix 7.3 for further details on the score construction.

Figure 4: Energy efficiency distortion score



Source: Authors' calculations.

The resulting score is slightly S-shaped (see Figure 4) and reflects the evolution of income and intensity elasticity as household revenues get bigger. For very low scores, the distortion effect is below unity and indicates that households are likely to use an additional budget to meet their “comfort” energy needs that were previously unfulfilled due to a binding budget constraint (for example by setting an acceptable level of warmth). Therefore, energy efficiency measures will first exhibit a rebound effect, but will improve and harmonize living conditions among households as well as developing energy efficient behaviors. The distortion score then gets closer to one until it reaches median household groups and increases greatly above unity for the following groups. High distortion score reflects high leverage for energy efficiency markets, but very high score can also be the sign of windfall effect and free riding that overall can offset energy efficiency revenue incentives. High distortion score households can enjoy the extra energy efficiency revenue to meet energy luxury needs according to bigger income elasticity. For example, households can use energy subsidies to change an old heat pump and replace it with a bigger new one.

5. Conclusion and policy implications

The aim of this paper is to provide a disaggregated-level analysis to investigate heterogeneity in French households' energy consumption. Using a clustering method based on the CHAID methodology, we show that the main identified drivers for energy consumption are related to the house's characteristics: heating fuel or equipment type, dwelling type and size, and construction date. Whereas income is crucial in determining the level of energy consumed, other households' characteristics also play a significant role: the location choice (urban density), the family type and the tenure (for electricity) are significant factors that have to be accounted for when estimating households' energy consumption. On the contrary, we find no significant evidence of learning effect through seniority influence for energy consumption—age or seniority being non-significant. Access to gas is a key to lower electricity bill, but it does not prevent from fuel vulnerability or even poverty in the case of very poor and constrained households as we found fuel poverty cases among gas-heated households in houses.

Fuel poverty is first and foremost a pendant of poverty itself. Our results show that it is more driven by revenue than dwelling characteristics and/or energy consumption habits. Poor households face a double constraint on (i) the level and price of energy use, and (ii) the quality and type of the heating equipment as they are less likely to access to cheaper fuel prices, energy efficient homes and infrastructures. First, low income households are more likely to fall into fuel poverty than richer households because they spend a significantly higher share of their income on house energy than richer households. Second, they have lower ability and willingness to engage in the energy market (switch supplier tariffs): whereas poor households are well known to play a great role as savvy customers in the food market, they have less access to the energy market and do not drive up supplier competition (Preston et al., 2014). Third, fuel poor groups are over-represented in northern France where the climate is more rigorous, and they are more likely living in big but old houses in rural areas: as such, they are less likely to have access to gas and transport infrastructures of high density living areas that are identified factors of lower energy bills.

The change in household energy consumption is a complex and microeconomic process depending on a range of factors that are related to three types: dwelling characteristics, household characteristics and exogenous factors. Energy policy measures that target a single

energy consumption level can only be arbitrary and will exhibit mixed results if they are modeled from technical characteristics or even the average household behavior. If we follow the hypothesis that income elasticity path is S-shaped and differs with diverse levels of income reflecting different natures of energy needs and arbitrages, then disaggregated policy measures targeted on household groups is a fair method to take those differences into account and prevent energy related inequalities to linger or grow.

Specifically, our group classification approach sheds the light on the energy divide among households and the fact that energy efficiency programs must be implemented carefully as the uncertain rebound effect can take two origins. The first rebound effect stems from the lowest revenue households with a low intensity factor, and results from the newly unbinding budget constraint and the desire to meet basic energy needs. This rebound effect has to be accounted for but is also likely to be (i) transitory (when fuel poor or vulnerable households all satisfy their basic energy needs, they will use their extra income for something else), and (ii) desirable as the housing stock grows towards more energy equity but also towards more energy performance. The second, at the other end of the energy efficiency distortion score, is the case of very high income households that can use energy efficiency revenue incentives as free riders in order to meet more energy luxury needs. This rebound effect is far less desirable as it consumes public spending in the case of revenue-based incentives (tax cuts or straight monetary subventions) and increases the energy gap between households although the benefit related to energy performance of the housing stock is fair.

Our distortion score suggests that energy policy measures need to take income and other differences among households into consideration as consumers' response to changes in income and energy prices will differ according to their initial score and take peculiar attention to the extreme score values. Different instruments dedicated to specific household groups would probably be a more efficient strategy to overcome the increasing energy divide among households. For low score groups and fuel poor households, "off market" measures such as transfer payments and social benefits are more suited to help households improve their level of warmth and appliance usage in the most energy efficient way. On the contrary, where revenue incentives can generate free riding among high distortion score households, patrimonial incentives that integrate the energy performance into the house patrimonial "green value" appear to be an efficient way to trigger energy efficiency investment with no windfall or free-riding effect.

6. Bibliography

- Baker, P., Blundell, R., 1991. The Microeconomic Approach to Modelling Energy Demand: Some Results for UK Households. *Oxford Review of Economic Policy* 7(2), 54-76.
- Baker, P., Blundell, R., Micklewright, J., 1989. Modelling Household Energy Expenditures Using Micro-data. *Economic Journal* 99(397), 720-38.
- Belson, W.A., 1959. Matching and Prediction on the Principle of Biological Classification. *Journal of the Royal Statistical Society, Series C (Applied Statistics)* 8.2, 65–75.
- Blundell, R., Kristensen, D., Matzkin, R., 2014. Bounding quantile demand functions using revealed preference inequalities. *Journal of Econometrics* 179, 112–127.
- Braun, F.G., 2010. Determinants of households' space heating type: A discrete choice analysis for German households. *Energy Policy* 38, 5493–5503.
- Cavailhès, J., Joly, D., Brossard, T., Cardot, H., Hilal, M., Wavresky, P., 2011. Consommation d'énergie des ménages en France. Report, INRA and CNRS.
- Cayla, J.-M., Allibe, B., Laurent, M.-H., 2010. From Practices to Behaviors: Estimating the Impact of Household Behavior on Space Heating Energy Consumption. In *ACEEE Summer Study on Energy Efficiency in Buildings*. Pacific Grove, CA, United States. <https://hal-mines-paristech.archives-ouvertes.fr/hal-00509187>.
- Cayla, J.-M., Maizi, N., Marchand, C., 2011. The role of income in energy consumption behaviour: Evidence from French households data. *Energy Policy* 39, 7874–7883.
- Charlier, D. 2015. Energy Efficiency Investments in the Context of Split Incentives among French Households. *Energy Policy* 87 (C), 465–79.
- DECC, 2009. Annual Report on Fuel Poverty Statistics 2009. Department for Energy and Climate Change. Available at: <http://www.decc.gov.uk>.
- Devalière, I., Briant, P., Arnault, S. 2011. La précarité énergétique : avoir froid ou dépenser trop pour se chauffer. *INSEE Première*, May, n°1351.
- Doyle, P., 1973. The use of automatic interaction detector and similar search procedures. *Operational Research Quarterly* 24(3), 465-467.

- Druckman, 2011. Missing carbon reductions? Exploring rebound and backfire effects in UK households. *Energy Policy* 39, 3572–3581.
- Druckman, A., Jackson, T., 2008. Household energy consumption in the UK: A highly geographically and socio-economically disaggregated model. *Energy Policy* 36, 3177–3192.
- Dubin, J., Miedema, A., Chandran, R., 1986. Price Effects of Energy-Efficient Technologies: A Study of Residential Demand for Heating and Cooling. *Rand Journal of Economics* 17(3), 310-325.
- Greening, A.L., Greene, D.L., Difiglio, C., 2000. Energy efficiency and consumption — the rebound effect — a survey. *Energy Policy* 28, 389–401.
- Guerra Santin, O., Itard, L., Visscher, H., 2009. The effect of occupancy and building characteristics on energy use for space and water heating in Dutch residential stock. *Energy and Buildings* 41, 1223–1232.
- Haas, R., Biermayr, P., 2000. The rebound effect for space heating Empirical evidence from Austria. *Energy Policy* 28(6–7), 403–410.
- Hassett, K.A., Metcalf, G.E., 1993. Energy conservation investment: Do consumers discount the future correctly? *Energy Policy* 21, 710–716.
- Houghton, D., Oulabi, S., 1993. Direct marketing modeling with CART and CHAID. *Journal of Direct Marketing* 7, 16–26.
- Hausman, J.A., 1979. Individual Discount Rates and the Purchase and Utilization of Energy-Using Durables. *The Bell Journal of Economics* 10, 33.
- Hills, J., 2012. Getting the measure of fuel poverty: final report of the Fuel Poverty Review.
- Jamasb, T., Meier, H., 2010. Household Energy Expenditure and Income Groups: Evidence from Great Britain. *Cambridge Working Papers in Economics* 1011, Faculty of Economics, University of Cambridge.
- Jamasb, T., Meier, H., 2011. Energy spending and vulnerable households. *Cambridge Working Papers in Economics*, Faculty of Economics, University of Cambridge.

- Kass, G.V., 1980. An exploratory technique for investigating large quantities of categorical data. *Applied Statistics* 29(2), 119-127.
- Khazzoom, J.D., 1980. Economic Implications of Mandated Efficiency in Standards for Household Appliances. *The Energy Journal* 1, 21–40.
- McCarty, J.A., Hastak, M., 2007. Segmentation approaches in data-mining: A comparison of RFM, CHAID, and logistic regression. *Journal of Business Research, Consumer Personality and Individual Differences* 60, 656–662.
- Meier, H., Jamasb, T., Orea, L., 2013. Necessity or Luxury Good? Household Energy Spending and Income in Britain 1991-2007. *Energy Journal* 34 (4), 109-128.
- Meier, H., Rehdanz, K., 2010. Determinants of residential space heating expenditures in Great Britain. *Energy Economics* 32, 949–959.
- Messenger, R., Mandell, L. 1972. A modal search technique for predictive nominal scale multivariate analysis. *Journal of the American Statistical Association* 67(340), 768-772.
- Morgan, J.N., Messenger, R.C., 1973. THAID a sequential analysis program for analysis of nominal scale dependent variables. Ann Arbor, Survey Research Center, Institute for Social Research, University of Michigan.
- Morgan, J.N., Sonquist, J.A., 1963. Problems in the analysis of survey data, and a proposal. *Journal of the American Statistical Association* 58, 415-435.
- Nesbakken, R., 2001. Energy Consumption for Space Heating: A Discrete–Continuous Approach. *The Scandinavian Journal of Economics* 103, 165–184.
- Parti, M., Parti, C., 1980. The Total and Appliance-Specific Conditional Demand for Electricity in the Household Sector. *The Bell Journal of Economics* 11, 309.
- Preston, I., White, V., Katharine, B., Hirsh, D., 2014. Fuel Poverty. A Rapid Evidence Assessment for the Joseph Rowntree Foundation. Centre for Sustainable Energy. Reg charity 298740, Bristol, UK.
- Rehdanz, K., 2007. Determinants of residential space heating expenditures in Germany. *Energy Economics* 29, 167–182.

- Ritschard, G., 2010. CHAID and Earlier Supervised Tree Methods. Research Papers 2010.02, Institute of Economics and Econometrics, Geneva School of Economics and Management, University of Geneva.
- Roberts, D., Vera-Toscano, E., Phimister, E., 2015. Fuel poverty in the UK: Is there a difference between rural and urban areas? *Energy Policy* 87, 216-223.
- Sonderegger, R.C., 1977. Movers and stayers: the resident's contribution to variation across houses in energy consumption for space heating. *Energy and Buildings* 1, 313–324.
- Sorrell, S., Dimitropoulos, J., 2008. The rebound effect: Microeconomic definitions, limitations and extensions. *Ecological Economics* 65, 636–649.
- Thomson, H., Snell, C., 2013. Quantifying the prevalence of fuel poverty across the European Union. *Energy Policy, Special Section: Transition Pathways to a Low Carbon Economy* 52, 563–572.
- Vaage, K., 2000. Heating Technology and Energy Use: a Discrete/Continuous Choice Approach to Norwegian Household Energy Demand. Department of Economics, University of Bergen No. 214.
- Van Diepen, M., Franses, P.H., 2006. Evaluating chi-squared automatic interaction detection. *Information Systems* 31, 814–831. doi:10.1016/j.is.2005.03.002
- Vickers, D., Rees, P., 2007. Creating the UK National Statistics 2001 output area classification. *Journal of the Royal Statistical Society: Series A (Statistics in Society)* 170, 379-403.
- Wyatt, P., 2013. A dwelling-level investigation into the physical and socio-economic drivers of domestic energy consumption in England. *Energy Policy* 60, 540–549.

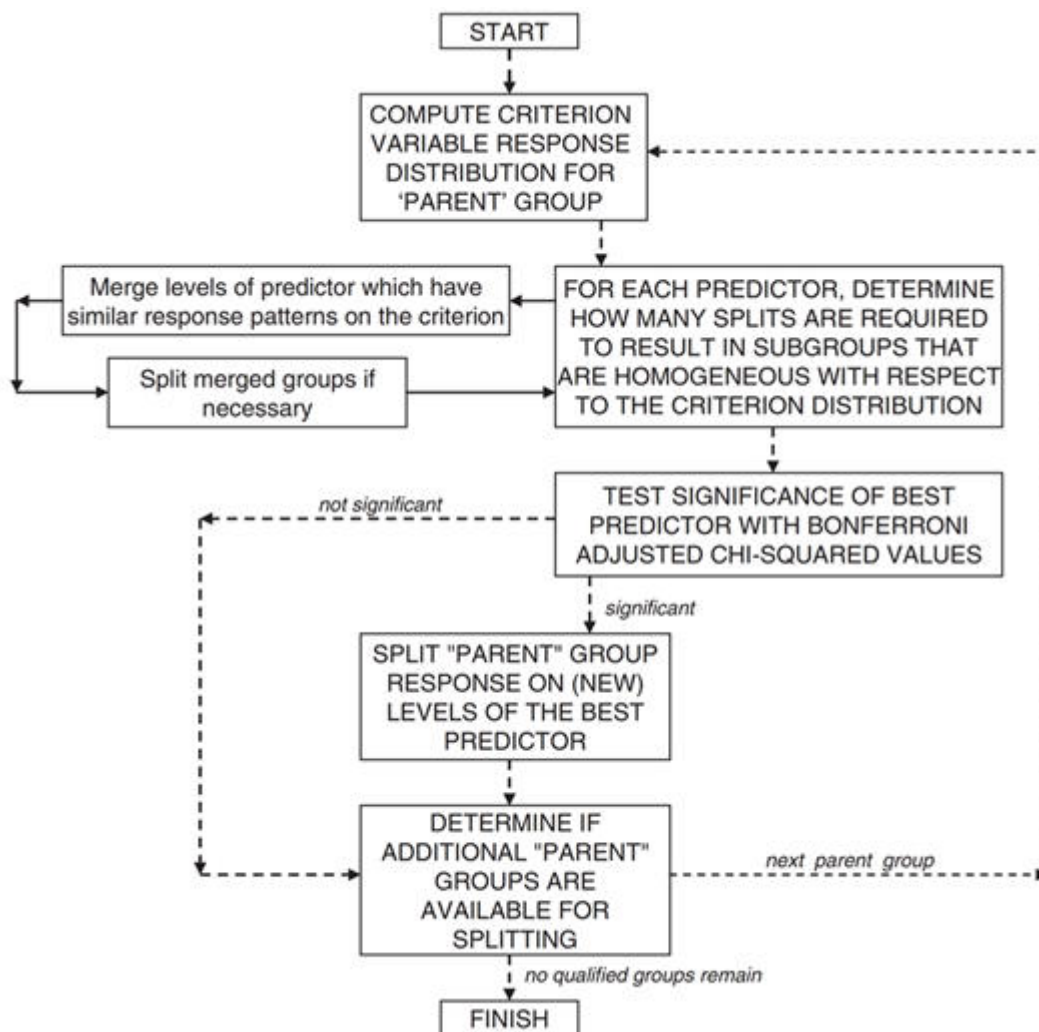
7. Appendix

7.1. French households' energy consumption and budget share regarding housing and households' characteristics

	<i>Annual Energy Expenditures</i>	<i>Energy Budget Share (%)</i>	<i>Annual Energy Expenditures</i>	<i>Energy Budget Share (%)</i>	<i>Annual Energy Expenditures</i>	<i>Energy Budget Share (%)</i>
Year of Construction	Average		Electricity heated		Gas heated	
Before 1871	1 364 €	5.84	1 423 €	6.1	1 288 €	4.9
1871-1914	1 077 €	5.34	1 100 €	3.5	1 066 €	4.7
1915-1948	1 015 €	5.17	1 092 €	5.9	1 000 €	4.7
1949-1961	784 €	4.07	1 039 €	6.0	700 €	3.8
1962-1967	650 €	3.64	1 200 €	5.8	600 €	3.4
1968-1974	612 €	3.41	1 171 €	5.3	544 €	3.1
1975-1981	900 €	3.62	1 258 €	4.7	688 €	3.3
1982-1989	978 €	3.62	1 240 €	4.2	730 €	3.3
1990-1998	850 €	3.59	1 225 €	3.9	713 €	3.4
1999 and after	988 €	3.28	1 092 €	3.7	858 €	3.1
Occupation Status	Average		Electricity heated		Gas heated	
New Owner	1 250 €	3.40	1 375 €	3.8	1 133 €	3.0
Tenants	617 €	3.78	700 €	4.4	600 €	3.6
Landlords	1 163 €	4.38	1 498 €	5.2	900 €	3.8
Revenue Decile	Average		Electricity heated		Gas heated	
1	635 €	9.99	680 €	11.0	600 €	9,3
2	720 €	6.47	843 €	7.6	645 €	5,8
3	739 €	5.06	890 €	6.1	660 €	4,4
4	825 €	4.53	990 €	5.4	710 €	3,9
5	900 €	4.11	1 130 €	5.0	780 €	3,5
6	1 049 €	3.94	1 213 €	4.6	915 €	3.5
7	1 100 €	3.47	1 262 €	4.0	980 €	3.0
8	1 220 €	3.20	1 337 €	3.5	1 100 €	2.9
9	1 301 €	2.79	1 496 €	3.1	1 164 €	2.5
10	1 500 €	2.03	1 680 €	2.3	1 380 €	1.9
Family Type						
Couple with children	1090 €	3.3	1 300 €	3.7%	930 €	3.08
Couple without children	1040 €	3.5	1 245 €	4.0%	890 €	3.14
Single Person	641 €	5.0	750 €	5.6%	585 €	4.63
Single Wo-Man with Children	730 €	5.2	900 €	5.9%	680 €	4.92
Unrelated people living together	779 €	3.8	1 106 €	4.5%	684 €	3.55
Urban Density						

Rural area	1340 €	4.6	1 350 €	4.7%	1 282 €	4.19
Low density (<20k hab)	1076 €	4.5	1 260 €	4.7%	900 €	4.20
Medium density (20k-200 k hab)	730 €	3.8	1 048 €	4.2%	680 €	3.75
High density (200k-2M hab)	880 €	3.7	930 €	3.8%	856 €	3.68
Paris	700 €	3.0	750 €	3.5%	660 €	2.85
Total (Average)	888 €	3.85	1 160 €	4.4	730 €	3.5

7.2. CHAID algorithm



7.3. Market mapping and distortion score

7.3.1. Households living in houses

<i>Houses Stock</i>	<i>Groups</i>	<i>Median Income</i>	<i>Weight</i>	<i>Median Global Energy Bill</i>	<i>Energy Budget Share</i>	<i>Intensity factor</i>	<i>Income/median</i>	<i>Energy Efficiency Distortion Score</i>
Gas heated groups in Houses	GH1	15 882 €	2.6%	1 200 €	7.90%	1.00	0.57	0.57
	GH2	33 203 €	5.7%	1 382 €	4.13%	1.15	1.20	1.38
	GH3 HIHC	52 697 €	17.9%	1 440 €	2.57%	1.20	1.90	2.8
	GH4 Fuel Poor	12 811 €	7.3%	1 191 €	9.71%	0.99	0.46	0.46
	GH5	19 673 €	2.2%	1 170 €	6.21%	0.98	0.71	0.69
	GH6	33 183 €	1.7%	1 356 €	4.12%	1.13	1.20	1.35
	GH7	33 778 €	7.2%	1 200 €	3.56%	1.00	1.22	1.22
	GH8	23 088 €	5.1%	1 265 €	5.58%	1.05	0.83	0.88
	GH9	22 393 €	2.3%	1 200 €	5.56%	1.00	0.81	0.81
	GH10 Old Solos	15 296 €	1.7%	997 €	6.39%	0.83	0.55	0.46
	GH11 Back Fire	19 660 €	1.0%	1 000 €	4.94%	0.83	0.71	0.59
Electrically Heated Groups in Houses	EH1 Fuel Poor	14 052 €	3.2%	1 200 €	9.47%	1.00	0.51	0.51
	EH2	22 999 €	8.7%	1 180 €	5.09%	0.98	0.83	0.82
	EH3	33 309 €	10.6%	1 250 €	3.77%	1.04	1.20	1.25
	EH4 HIHC	51 168 €	13.3%	1 485 €	2.71%	1.24	1.85	2.8
	EH5 Back Fire Candidates	11 674 €	3.0%	861 €	8.06%	0.72	0.42	0.30
	EH6 Old Solos	12 000 €	4.4%	994 €	8.44%	0.83	0.43	0.36
	EH7	33 279 €	2.0%	1 119 €	3.39%	0.93	1.20	1.12
Average Houses		27 720 €	100.00%	1 200 €	4.25%	1.00	1.00	1.00

7.3.2. Households living in flats

<i>Individual Dwelling stock</i>	<i>Groups</i>	<i>Median Income</i>	<i>Weight</i>	<i>Median Global Energy Bill</i>	<i>Energy Budget Share</i>	<i>Intensity factor</i>	<i>Income/median</i>	<i>Energy Efficiency Distortion Score</i>
Gas heated groups in Flats	G1	16 595 €	3.3%	800 €	4.34%	1.33	0.92	1.23
	G2	12 191 €	10.2%	718 €	6.32%	1.20	0.68	0.81
	G3	29 354 €	1.9%	1 000 €	2.97%	1.67	1.63	2.71
	G4	25 673 €	16.3%	735 €	2.81%	1.23	1.42	1.75
	G-HIHC	49 845 €	4.0%	852 €	1.66%	1.42	2.77	3.93
	G6 Young Singles	11 101 €	10.8%	600 €	5.57%	1.00	0.62	0.62
	G7	22 025 €	1.4%	947 €	4.18%	1.58	1.22	1.93
	G8	20 800 €	2.2%	570 €	2.63%	0.95	1.15	1.10
	G9	22 258 €	3.4%	461 €	2.11%	0.77	1.24	0.95
	G10	21 240 €	1.0%	635 €	3.04%	1.06	1.18	1.25
	G11	28 463 €	2.4%	750 €	2.61%	1.25	1.58	1.97
	G12	13 410 €	1.3%	680 €	4.81%	1.13	0.74	0.84
	G13	25 194 €	2.3%	630 €	2.65%	1.05	1.40	1.47
	G14	16 545 €	1.3%	436 €	3.14%	0.73	0.92	0.67
Electrically Heated Groups in Flats	E1	14 563 €	5.4%	720 €	5.16%	1.20	0.81	0.97
	E2	23 409 €	7.9%	911 €	3.80%	1.52	1.30	1.97
	E3 - Young Singles	14 055 €	16.7%	598 €	4.32%	1.00	0.78	0.78
	E4	32 900 €	2.4%	753 €	2.29%	1.26	1.83	2.29
	E-HIHC	52 000 €	2.2%	874 €	1.56%	1.46	2.89	4.20
	E6	10 716 €	3.5%	768 €	6.57%	1.28	0.59	0.76
Average Flats		18 020 €	100.00%	600 €	3.33%	1.00	1.00	1.00

The "*Cahiers de l'Économie*" Series

The "*Cahiers de l'économie*" Series of occasional papers was launched in 1990 with the aim to enable scholars, researchers and practitioners to share important ideas with a broad audience of stakeholders including, academics, government departments, regulators, policy organisations and energy companies.

All these papers are available upon request at IFP School. All the papers issued after 2004 can be downloaded at: www.ifpen.fr

The list of issued occasional papers includes:

1. D. PERRUCHET, J.-P. CUEILLE

Compagnies pétrolières internationales : intégration verticale et niveau de risque.
Novembre 1990

2. C. BARRET, P. CHOLLET

Canadian gas exports: modeling a market in disequilibrium.
Juin 1990

3. J.-P. FAVENNEC, V. PREVOT

Raffinage et environnement.
Janvier 1991

4. D. BABUSIAUX

Note sur le choix des investissements en présence de rationnement du capital.
Janvier 1991

5. J.-L. KARNIK

Les résultats financiers des sociétés de raffinage distribution en France 1978-89.
Mars 1991

6. I. CADORET, P. RENOU

Élasticités et substitutions énergétiques : difficultés méthodologiques.
Avril 1991

7. I. CADORET, J.-L. KARNIK

Modélisation de la demande de gaz naturel dans le secteur domestique : France, Italie, Royaume-Uni 1978-1989.
Juillet 1991

8. J.-M. BREUIL

Émissions de SO₂ dans l'industrie française : une approche technico-économique.
Septembre 1991

9. A. FAUVEAU, P. CHOLLET, F. LANTZ

Changements structurels dans un modèle économétrique de demande de carburant.
Octobre 1991

10. P. RENOU

Modélisation des substitutions énergétiques dans les pays de l'OCDE.
Décembre 1991

11. E. DELAFOSSE

Marchés gaziers du Sud-Est asiatique : évolutions et enseignements.
Juin 1992

12. F. LANTZ, C. IOANNIDIS

Analysis of the French gasoline market since the deregulation of prices.
Juillet 1992

13. K. FAID

Analysis of the American oil futures market.
Décembre 1992

14. S. NACHET

La réglementation internationale pour la prévention et l'indemnisation des pollutions maritimes par les hydrocarbures.
Mars 1993

15. J.-L. KARNIK, R. BAKER, D. PERRUCHET

Les compagnies pétrolières : 1973-1993, vingt ans après.
Juillet 1993

16. N. ALBA-SAUNAL

Environnement et élasticités de substitution dans l'industrie ; méthodes et interrogations pour l'avenir.
Septembre 1993

17. E. DELAFOSSE

Pays en développement et enjeux gaziers : prendre en compte les contraintes d'accès aux ressources locales.
Octobre 1993

18. J.P. FAVENNEC, D. BABUSIAUX*

L'industrie du raffinage dans le Golfe arabe, en Asie et en Europe : comparaison et interdépendance.
Octobre 1993

19. S. FURLAN

L'apport de la théorie économique à la définition d'externalité.
Juin 1994

20. M. CADREN

Analyse économétrique de l'intégration européenne des produits pétroliers : le marché du diesel en Allemagne et en France.
Novembre 1994

21. J.L. KARNIK, J. MASSERON*

L'impact du progrès technique sur l'industrie du pétrole.
Janvier 1995

22. J.P. FAVENNEC, D. BABUSIAUX

L'avenir de l'industrie du raffinage.
Janvier 1995

23. D. BABUSIAUX, S. YAFIL*

Relations entre taux de rentabilité interne et taux de rendement comptable.
Mai 1995

24. D. BABUSIAUX, J. JAYLET*

Calculs de rentabilité et mode de financement des investissements, vers une nouvelle méthode ?
Juin 1996

- # 25. J.P. CUEILLE, J. MASSERON***
Coûts de production des énergies fossiles : situation actuelle et perspectives.
Juillet 1996
- # 26. J.P. CUEILLE, E. JOURDAIN**
Réductions des externalités : impacts du progrès technique et de l'amélioration de l'efficacité énergétique.
Janvier 1997
- # 27. J.P. CUEILLE, E. DOS SANTOS**
Approche évolutionniste de la compétitivité des activités amont de la filière pétrolière dans une perspective de long terme.
Février 1997
- # 28. C. BAUDOUIN, J.P. FAVENNEC**
Marges et perspectives du raffinage.
Avril 1997
- # 29. P. COUSSY, S. FURLAN, E. JOURDAIN, G. LANDRIEU, J.V. SPADARO, A. RABL**
Tentative d'évaluation monétaire des coûts externes liés à la pollution automobile : difficultés méthodologiques et étude de cas.
Février 1998
- # 30. J.P. INDJEHAGOPIAN, F. LANTZ, V. SIMON**
Dynamique des prix sur le marché des fiouls domestiques en Europe.
Octobre 1998
- # 31. A. PIERRU, A. MAURO**
Actions et obligations : des options qui s'ignorent.
Janvier 1999
- # 32. V. LEPEZ, G. MANDONNET**
Problèmes de robustesse dans l'estimation des réserves ultimes de pétrole conventionnel.
Mars 1999
- # 33. J. P. FAVENNEC, P. COPINSCHI**
L'amont pétrolier en Afrique de l'Ouest, état des lieux
Octobre 1999
- # 34. D. BABUSIAUX**
Mondialisation et formes de concurrence sur les grands marchés de matières premières énergétiques : le pétrole.
Novembre 1999
- # 35. D. RILEY**
The Euro
Février 2000
- # 36. D. BABUSIAUX, A. PIERRU***
Calculs de rentabilité et mode de financement des projets d'investissements : propositions méthodologiques.
Avril 2000 & septembre 2000
- # 37. P. ALBA, O. RECH**
Peut-on améliorer les prévisions énergétiques ?
Mai 2000
- # 38. J.P. FAVENNEC, D. BABUSIAUX**
Quel futur pour le prix du brut ?
Septembre 2000
- # 39. S. JUAN, F. LANTZ**
La mise en œuvre des techniques de Bootstrap pour la prévision économétrique : application à l'industrie automobile
Novembre 2000
- # 40. A. PIERRU, D. BABUSIAUX**
Coût du capital et étude de rentabilité d'investissement : une formulation unique de l'ensemble des méthodes.
Novembre 2000
- # 41. D. BABUSIAUX**
Les émissions de CO2 en raffinerie et leur affectation aux différents produits finis
Décembre 2000
- # 42. D. BABUSIAUX**
Éléments pour l'analyse des évolutions des prix du brut.
Décembre 2000
- # 43. P. COPINSCHI**
Stratégie des acteurs sur la scène pétrolière africaine (golfe de Guinée).
Janvier 2001
- # 44. V. LEPEZ**
Modélisation de la distribution de la taille des champs d'un système pétrolier, Log Normale ou Fractale ? Une approche unificatrice.
Janvier 2001
- # 45. S. BARREAU**
Innovations et stratégie de croissance externe : Le cas des entreprises parapétrolières.
Juin 2001
- # 46. J. P. CUEILLE***
Les groupes pétroliers en 2000 : analyse de leur situation financière.
Septembre 2001
- # 47. T. CAVATORTA**
La libéralisation du secteur électrique de l'Union européenne et son impact sur la nouvelle organisation électrique française
Décembre 2001
- # 48. P. ALBA, O. RECH**
Contribution à l'élaboration des scénarios énergétiques.
Décembre 2001
- # 49. A. PIERRU***
Extension d'un théorème de dualité en programmation linéaire : Application à la décomposition de coûts marginaux de long terme.
Avril 2002
- # 50. T. CAVATORTA**
La seconde phase de libéralisation des marchés du gaz de l'Union européenne : enjeux et risques pour le secteur gazier français.
Novembre 2002
- # 51. J.P. CUEILLE, L. DE CASTRO PINTO COUTHINO, J. F. DE MIGUEL RODRÍGUEZ***
Les principales compagnies pétrolières indépendantes américaines : caractéristiques et résultats récents.
Novembre 2002
- # 52. J.P. FAVENNEC**
Géopolitique du pétrole au début du XXI^e siècle
Janvier 2003
- # 53. V. RODRIGUEZ-PADILLA***
L'ouverture de l'exploration et de la production de gaz naturel au Mexique, libéralisme ou nationalisme
Janvier 2003

- # 54. T. CAVATORTA, M. SCHENCKERY**
Les majors pétroliers vers le multi énergies : mythe ou réalité ?
Juin 2003
- # 55. P.R. BAUQUIS**
What energy sources will power transport in the 21st century?
Janvier 2004
- # 56. A. PIERRU, D. BABUSIAUX**
Evaluation de projets d'investissement par une firme multinationale : généralisation du concept de coût moyen pondéré du capital et conséquences sur la valeur de la firme.
Février 2004
- # 57. N. BRET-ROUZAUT, M. THOM**
Technology Strategy in the Upstream Petroleum Supply Chain.
Mars 2005
- # 58. A. PIERRU**
Allocating the CO₂ emissions of an oil refinery with Aumann-Shapley prices.
June 2005
- # 59. F. LESCAROUX**
The Economic Consequences of Rising Oil Prices.
Mai 2006
- # 60. F. LESCAROUX, O. RECH**
L'origine des disparités de demande de carburant dans l'espace et le temps : l'effet de la saturation de l'équipement en automobiles sur l'élasticité revenu.
Juin 2006
- # 61. C. I. VASQUEZ JOSSE, A. NEUMANN**
Transatlantic Natural Gas Price and Oil Price Relationships - An Empirical Analysis.
Septembre 2006
- # 62. E. HACHE**
Une analyse de la stratégie des compagnies pétrolières internationales entre 1999 et 2004.
Juillet 2006
- # 63. F. BERNARD, A. PRIEUR**
Biofuel market and carbon modeling to evaluate French biofuel policy.
Octobre 2006
- # 64. E. HACHE**
Que font les compagnies pétrolières internationales de leurs profits ?
Janvier 2007
- # 65. A. PIERRU**
A note on the valuation of subsidized Loans
Janvier 2007
- # 66. D. BABUSIAUX, P. R. BAUQUIS**
Depletion of Petroleum Reserves and Oil Price trends
Septembre 2007
- # 67. F. LESCAROUX**
Car ownership in relation to income distribution and consumers's spending decisions.
Novembre 2007
- # 68. D. BABUSIAUX, A. PIERRU**
Short-run and long-run marginal costs of joint products in linear programming
Juin 2008
- # 69. E. HACHE**
Commodities Markets: New paradigm or new fashion?
Juillet 2008
- # 70. D. BABUSIAUX, A. PIERRU**
Investment project valuation: A new equity perspective
Février 2009
- # 71. O. MASSOL, S. TCHUNG-MING**
Stratégies coopératives dans l'industrie du GNL : l'argument de la rationalisation est-il fondé ?
Février 2009
- # 72. A. PIERRU, D. BABUSIAUX**
Valuation of investment projects by an international oil company: A new proof of a straightforward, rigorous method
Février 2009
- # 73. E. SENTENAC CHEMIN**
Is the price effect on fuel consumption symmetric? Some evidence from an empirical study
Avril 2009
- # 74. E. HACHE**
OBAMA : Vers un green New Deal énergétique ?
Septembre 2009
- # 75. O. MASSOL**
Cost function for the natural gas transmission industry: further considerations
Septembre 2009
- # 76. F. LANTZ, E. SENTENAC CHEMIN**
Analyse des tendances et des ruptures sur le marché automobile français. Modélisation du taux de diésélisation dans le parc
Décembre 2010.
- # 77. B. CHÈZE, P. GASTINEAU, J. CHEVALLIER**
Forecasting air traffic and corresponding Jet-Fuel Demand until 2025
Décembre 2010.
- # 78. V. BREMOND, E. HACHE, V. MIGNON**
Does OPEC still exist as a cartel? An empirical investigation
Mars 2011.
- # 79. I. ABADA, O. MASSOL**
Security of supply and retail competition in the European gas market. Some model-based insights.
Mars 2011.
- # 80. E. HACHE, F. LANTZ**
Oil price volatility: an econometric analysis of the WTI market.
Avril 2011.
- # 81. I. ABADA, V. BRIAT, O. MASSOL**
Construction of a fuel demand function portraying interfuel substitution, a system dynamics approach.
Avril 2011
- # 82. E. LE CADRE, F. LANTZ, P-A. JOUVET**
The bioenergies development: the role of biofuels and the CO₂ price.
Décembre 2011
- # 83. E. LE CADRE, F. LANTZ, A. FARNOOSH**
Bioenergies usages in electricity generation utility means through a modelling approach: application to the French case.
Décembre 2011

84. I. ABADA, V. BRIAT, S. GABRIEL, O. MASSOL

A generalized Nash-Cournot model for the north-western European natural gas markets with a fuel substitution demand function: the GaMMES model.
Décembre 2011

85. O. MASSOL, A. BANAL-ESTAÑOL

Export diversification and resource-based industrialization: the case of natural gas.
Décembre 2011

86. B. CHÈZE, P. GASTINEAU, J. CHEVALLIER

Air traffic energy efficiency differs from place to place: analysis of historical trends by geographical zones using a macro-level methodology.
Décembre 2011

87. D. LORNE, S. TCHUNG-MING

The French biofuels mandates under cost uncertainty – an assessment based on robust optimization.
Septembre 2012

88. L. de MAACK, F. LANTZ

Petroleum products price interactions on the world markets: an econometric analysis.
Septembre 2012

89. O. MASSOL, S. TCHUNG-MING

Joining the CCS Club! Insights from a Northwest European CO₂ Pipeline Project.
Octobre 2012

90. F.M. MENTEN, S. TCHUNG-MING, D. LORNE, F. BOUVART

Lessons from the use of a long-term energy model for consequential life cycle assessment: the BTL case.
Novembre 2013

91. A. CHEVALIER, F. LANTZ

Personal car or shared car? Predicting potential modal shifts from multinomial logit models and bootstrap confidence intervals
Novembre 2013

92. A. FARNOOSH, F. LANTZ, J. PERCEBOIS

Electricity generation analyses in an oil-exporting country: Transition to non-fossil fuel based power units in Saudi Arabia
Décembre 2013

93. V. BREMOND, E. HACHE, M. JOËTS

On the link between oil and commodity prices: a panel VAR approach
Décembre 2013

94. B. CHÈZE, J. CHEVALLIER, P. GASTINEAU

Will technological progress be sufficient to stabilize CO₂ emissions from air transport in the mid-term?
Décembre 2013

95. F. MENTEN, B. CHÈZE, L. PATOILLARD, F. BOUVART

The use of Meta-Regression Analysis to harmonize LCA literature: an application to GHG emissions of 2nd and 3rd generation biofuels
Décembre 2013

96. A. DIAZ, S. PROOST

Second-best urban tolling with distributive concerns
Décembre 2013

97. O. MASSOL, A. BANAL-ESTAÑOL

Market power across the Channel: Are Continental European gas markets isolated?

Janvier 2014

98. C. NICOLAS, V. SAINT-ANTONIN, S. TCHUNG-MING

(How) does sectoral detail affect the robustness of policy insights from energy system models? The refining sector's example
Octobre 2014

99. V. BREMOND, E. HACHE, T. RAZAFINDRABE

On the link between oil price and exchange rate: A time-varying VAR parameter approach
Juillet 2015

100. A. BANAL-ESTAÑOL, J. ECKHAUSE, O. MASSOL

Incentives for early adoption of carbon capture technology: further considerations from a European perspective
Juillet 2015

101. A. FARNOOSH, F. LANTZ

Decarbonisation of electricity generation in an oil & gas producing country: "A sensitivity analysis over the power sector in Egypt"
Juillet 2015

102. F. FOSSE, E. HACHE, P. PORTENART

Un nouveau cycle de fusions et acquisitions dans le secteur des hydrocarbures ? Une analyse économique et historique de la période 2008-2015
Avril 2016

103. E. HACHE, D. LEBoulLENGER, V. MIGNON

Beyond average energy consumption in the French residential housing market: A household classification approach
Avril 2016

* une version anglaise de cet article est disponible sur demande