



**HAL**  
open science

## Addressing temporal considerations in life cycle assessment

Didier Beloin-Saint-Pierre, Ariane Albers, Arnaud Hélias, Ligia Tiruta-Barna,  
Peter Fantke, Annie Levasseur, Enrico Benetto, Anthony Benoist, Pierre  
Collet

► **To cite this version:**

Didier Beloin-Saint-Pierre, Ariane Albers, Arnaud Hélias, Ligia Tiruta-Barna, Peter Fantke, et al..  
Addressing temporal considerations in life cycle assessment. *Science of the Total Environment*, 2020,  
pp.140700. 10.1016/j.scitotenv.2020.140700 . hal-02894987v1

**HAL Id: hal-02894987**

**<https://ifp.hal.science/hal-02894987v1>**

Submitted on 9 Jul 2020 (v1), last revised 15 Sep 2020 (v2)

**HAL** is a multi-disciplinary open access archive for the deposit and dissemination of scientific research documents, whether they are published or not. The documents may come from teaching and research institutions in France or abroad, or from public or private research centers.

L'archive ouverte pluridisciplinaire **HAL**, est destinée au dépôt et à la diffusion de documents scientifiques de niveau recherche, publiés ou non, émanant des établissements d'enseignement et de recherche français ou étrangers, des laboratoires publics ou privés.

# 1 Addressing temporal considerations in life cycle assessment

2 Didier Beloin-Saint-Pierre <sup>1†</sup>, Ariane Albers <sup>2</sup>, Arnaud Hélias <sup>3</sup>, Ligia Tiruta-Barna <sup>4</sup>, Peter Fantke <sup>5</sup>,  
3 Annie Levasseur <sup>6</sup>, Enrico Benetto <sup>7</sup>, Anthony Benoist <sup>8</sup>, Pierre Collet <sup>2</sup>

4 † Corresponding author

5 <sup>1</sup> Empa Materials Science and Technology, Lerchenfeldstrasse 5, CH-9014 St. Gallen, Switzerland

6 <sup>2</sup> IFP Energies Nouvelles, 1 et 4 Avenue de Bois-Préau, 92852 Rueil-Malmaison, France

7 <sup>3</sup> ITAP, Irstea, Montpellier SupAgro, Univ Montpellier, ELSA Research Group, Montpellier, France

8 <sup>4</sup> TBI, Université de Toulouse, CNRS, INRAE, INSA, Toulouse, France

9 <sup>5</sup> Quantitative Sustainability Assessment, Department of Technology, Management and Economics, Technical  
10 University of Denmark, Kgs. Lyngby, Denmark

11 <sup>6</sup> École de technologie supérieure, Construction Engineering Department, 1100 Notre-Dame West, Montréal,  
12 Québec, Canada

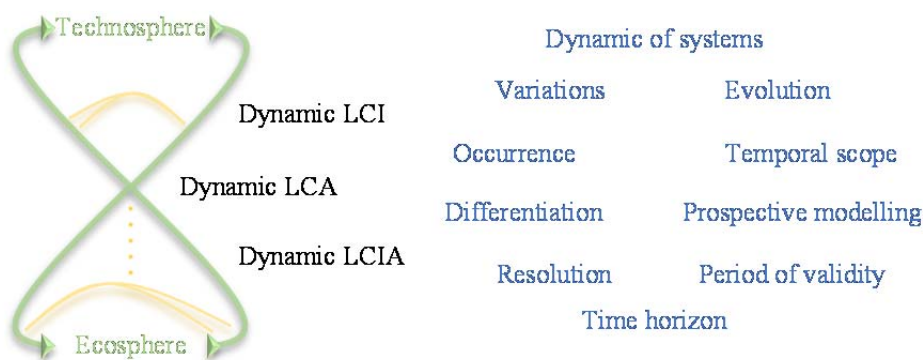
13 <sup>7</sup> Environmental Sustainability Assessment and Circularity Unit, Department of Environmental Research and  
14 Innovation, Luxembourg Institute of Science and Technology, Esch/Alzette, Luxembourg

15 <sup>8</sup> CIRAD, UPR BioWooEB, F-34398 Montpellier, France

## 16 HIGHLIGHTS:

- 17 • Review of temporal considerations in the life cycle assessment methodology
- 18 • Glossary of important terms for time considerations in life cycle assessment
- 19 • Key aspects of dynamic life cycle assessments
- 20 • Current implementation challenges for dynamic life cycle assessment
- 21 • Development pathways for future dynamic life cycle assessment

22



23

24

25 **ABSTRACT**

26 In life cycle assessment (LCA), temporal considerations are usually lost during the life cycle inventory  
27 calculation, resulting in an aggregated “snapshot” of potential impacts. Disregarding such temporal  
28 considerations has previously been underlined as an important source of uncertainty, but a growing number of  
29 approaches have been developed to tackle this issue. Nevertheless, their adoption by LCA practitioners is still  
30 uncommon, which raises concerns about the representativeness of current LCA results. Furthermore, a lack of  
31 consistency can be observed in the used terms for discussions on temporal considerations. The purpose of this  
32 review is thus to search for common ground and to identify the current implementation challenges while also  
33 proposing development pathways.

34 This paper introduces a glossary of the most frequently used terms related to temporal considerations in LCA to  
35 build a common understanding of key concepts and to facilitate discussions. A review is also performed on  
36 current solutions for temporal considerations in different LCA phases (goal and scope definition, life cycle  
37 inventory analysis and life cycle impact assessment), analysing each temporal consideration for its relevant  
38 conceptual developments in LCA and its level of operationalisation.

39 We then present a potential stepwise approach and development pathways to address the current challenges of  
40 implementation for dynamic LCA (DLCA). Three key focal areas for integrating temporal considerations within  
41 the LCA framework are discussed: i) define the temporal scope over which temporal distributions of emissions  
42 are occurring, ii) use calendar-specific information to model systems and associated impacts, and iii) select the  
43 appropriate level of temporal resolution to describe the variations of flows and characterisation factors.

44 Addressing more temporal considerations within a DLCA framework is expected to reduce uncertainties and  
45 increase the representativeness of results, but possible trade-offs between additional data collection efforts and  
46 the increased value of results from DLCA should be kept in mind.

47 **KEYWORDS:**

48 Dynamic LCA, temporal considerations, review, recommendations, implementation challenges

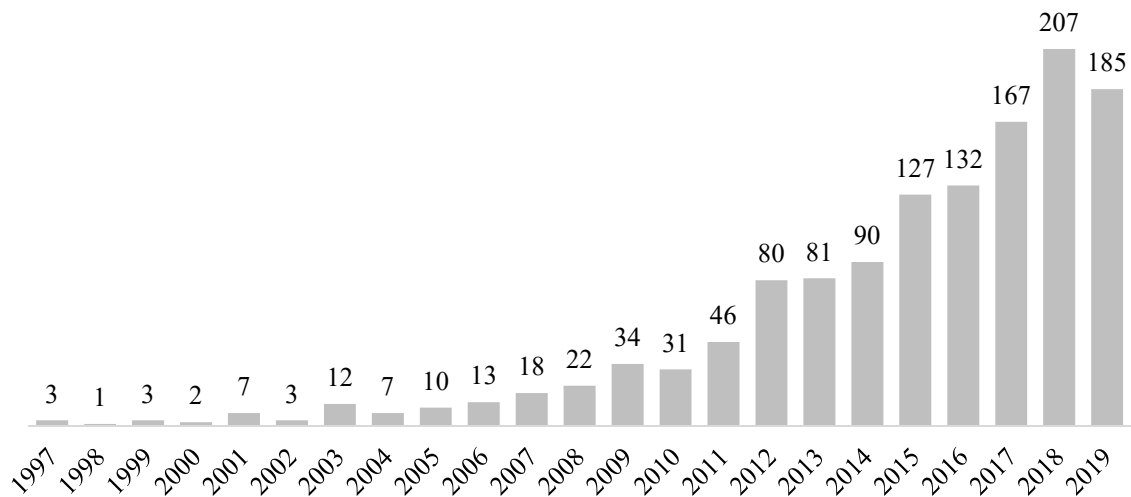
49

50

51

52 1. INTRODUCTION

53 Disregarding temporal considerations<sup>1</sup> has been identified as an inherent limitations of life cycle assessment  
54 (LCA) (ISO14040, 2006; ISO14044, 2006). Indeed, the importance of properly considering the dynamics of  
55 environmental sustainability for the comparison of products, services or systems has been explored, debated and  
56 confirmed during the last 20 years by many researchers like Owens (1997a), Herrchen (1998), Reap et al.  
57 (2008a; 2008b), Finnveden et al. (2009), Levasseur et al. (2010) and McManus & Taylor (2015), to name a few.  
58 In this discussion, Rebitzer et al. (2004), Reap et al. (2008a) and Yuan et al. (2015) have mainly explored the  
59 subject of dynamics in human activities. During the same period, Reap et al. (2008b), Shah & Ries (2009),  
60 Fantke et al. (2012), Kendall (2012), Levasseur et al. (2012b) and Manneh et al. (2012) have proposed different  
61 ideas on the dynamics of environmental responses to human pressures. Additionally, Hellweg et al. (2003b;  
62 2005; 2014), Levasseur et al. (2013), Saez de Bikuña et al. (2018) and Yu et al. (2018) have underlined different  
63 potential effects from the choice of temporal boundaries in LCA studies. These three general subjects have  
64 covered the bulk of the conversation on temporal considerations in the LCA framework and a growing  
65 awareness of the LCA community on this topic is shown in figure 1<sup>2</sup> with a growth in the number of publications  
66 where some aspects are addressed.



---

<sup>1</sup> Consideration encompass all aspects relating to the description of time and dynamics of systems (see glossary in Table 1).

<sup>2</sup> The annual number of publications were found with the advance search function on web of science. The following words and conditions were searched for in the topic section: (“life cycle assessment” AND temporal) + (“life cycle assessment” AND “time horizon”) + (“life cycle assessment” AND dynamic). The word “time” was not part of the search to avoid mentions of the time required for data gathering activity and because it can be part of words like “sometimes”. The search was made on the 17 of December, 2019.

Figure 1: Numbers of LCA publications per year where temporal considerations are discussed

67 Within the identified 1281 publications, 53 review papers present several discussions about temporal  
68 considerations in different sectors (*e.g.* agriculture, building and energy) or in the general LCA framework. Very  
69 recently, Sohn et al. (2020) and Lueddeckens et al. (2020) have proposed reviews on aspects or issues that are  
70 connected to the approach of dynamic LCA (DLCA). In Sohn et al. (2020), three types of dynamism have been  
71 defined: dynamic process inventory, dynamic system inventory and dynamic characterisation, thus focusing on  
72 the concern of changes in human activities and environmental responses with many implementation examples.  
73 Lueddeckens et al. (2020) have offered a clearly structured analysis of 60 documents that have been published  
74 until the end of 2018 where interdependencies are underlined and solutions from the literature are identified for  
75 six types of temporal issues (*i.e.* time horizon, temporal weighting/discounting, temporal resolution of the  
76 inventory, time-dependent characterisation, dynamic weighting and time-dependent normalisation). While  
77 comprehensive for these six issues, the work of Lueddeckens et al. (2020) does not offer a detailed discussion on  
78 questions like computation, uncertainty and variability for the DLCA approach.

79 When looking at the abundant literature on the subject of temporal considerations in LCA, it rapidly becomes  
80 clear that the vocabulary in recent and older reviews varies considerably for common aspects such as the  
81 temporal scope or time horizon. We believe that this lack of consistency in terminology is hindering a clear  
82 discussion on the subject and therefore the development of new propositions that can be accepted by a majority  
83 of researchers. Furthermore, while many ideas, concepts, approaches and tools have been suggested by  
84 researchers and are now used in publications under the term DLCA, their widespread implementation by  
85 practitioners is still far from reached. This lack of temporal considerations in most LCA studies is worrisome  
86 since it was shown that such aspects may have significant effects on LCA results mainly in the sectors of  
87 buildings (Collinge et al., 2018; Negishi et al., 2019; Roux et al., 2016b) and energy (Amor et al., 2014; Beloin-  
88 Saint-Pierre et al., 2017; Menten et al., 2015; Pehnt, 2006). It thus seems important to identify and address the  
89 current implementation challenges that prevent LCA practitioners from more frequent accounting of temporal  
90 considerations.

91 These challenges are tackled in the following sections. First, a glossary in section 2 proposes definitions for  
92 terms related to temporal considerations in LCA, which should clarify shared aspects of past discussions and  
93 help in building consensus. These terms are then used consistently in the text. Section 3 follows with a review of  
94 the LCA literature that highlights current implementation challenges for a broad application of the DLCA

95 approach. Recommendations for current implementation options and further developments are then provided in  
96 section 4.

97

98 Finding a clear structure to organise and analyse the numerous options for temporal consideration that have been  
 99 discussed in the last 20 years of LCA development can be a daunting task. Previous reviews have chosen  
 100 different strategies mainly based on specific sectors, themes or issues. These scheme have often limited the  
 101 scope of the analysis or the identification of connections between ideas. We therefore chose another perspective  
 102 that classifies temporal considerations based on why they are used (i.e. purposes). Indeed, from our  
 103 understanding, temporal considerations are employed in LCA studies to define the temporal scope, to describe  
 104 the dynamic of systems and to increase the representativeness of models. We also differentiate the temporal  
 105 considerations within the standard phases of the LCA framework to provide a frame of reference that is well-  
 106 known to practitioners. We thus hope to cover most options for temporal consideration in LCA with this strategy  
 107 and to comprehensively address the topic for a broader implementation of DLCA studies in the future.

## 108 2. PROPOSED GLOSSARY

109 Table 1 proposes key terms and definitions to discuss temporal considerations within the LCA framework. These  
 110 terms are used throughout this review to ensure a consistent and non-ambiguous discussion for future  
 111 developments. It is also the authors' hope that this glossary might bring some uniformity in future discussions.  
 112 Concepts behind the most recently proposed definitions for types of dynamism and four subtypes of DLCA  
 113 (Sohn et al., 2020) can be found in this table with a somewhat different perspective.

114  
 115 Table 1: List of proposed terms defining key temporal considerations in the LCA framework. The list is in alphabetical order  
 116 so all terms from this glossary are underlined to highlight the links. Words in brackets are synonyms from the literature

Term	Definition
Dynamic LCA (DLCA)	LCA studies where relevant <u>dynamic of systems</u> and/or <u>temporal differentiation</u> of flows are explicitly defined and considered.
Dynamic LCI (DLCI)	Life cycle inventory (LCI) that is calculated from supply and value chains where <u>dynamic of systems</u> or <u>temporal differentiation</u> is considered, resulting in temporal distributions to describe elementary flows.
Dynamic LCIA (DLCIA)	Characterisation models of environmental mechanisms that account for the dynamic of ecosphere systems and can therefore use temporal information of <i>DLCLs</i> . The chosen <u>temporal differentiation</u> (e.g. day, season, and year) can depend on the impact categories. Both case specific and calendar-based characterisation models can be used, depending on the chosen indicators.
Dynamic of systems	System modelling that considers inherent variations, periods of occurrence or evolution within the temporal scope of models' components. Such a dynamic modelling can be applied to both technosphere systems (for LCI) and ecosphere systems (for LCIA).
Evolution	Changes of process, structure or state <u>models' components</u> (e.g. technology replacement, pollutant concentration in a compartment of the environment).
Inherent variations	Variations of flows in the <u>models' components</u> (e.g. cycles of solar energy production, growth rates of vegetation, seasonal functional traits, biogeochemical and biophysical dynamics). The discontinuities of flow rates are also part of such changes.

Models' components	Information structuring all models. At the technosphere level, components are elementary flows, product flows and processes. At the ecosphere level, components of LCIA models differ between impact categories. For example, components for freshwater ecotoxicity can be environmental fate, ecosystem exposure and ecotoxicological effects (Fantke et al., 2018).
Period of occurrence	The moment when a <u>model's component</u> is starting, modified or finishing over time. (e.g. lifespan of a building, beginning of waste management, start of a life cycle)
Period-specific characterisation factor (CF)	CF for a given <u>temporal scope</u> or <u>period of occurrence</u> . It results from the <u>dynamic of systems</u> in the ecosphere and can be calendar-specific, relative to the length of the <u>temporal scope</u> , or defined by a <u>TH</u> . <u>Period-specific CFs</u> are modelled as constant over the chosen period.
Period of validity	The period over which datasets, LCIs or LCIA methods are considered valid representations. This information should be calendar-based. [Time context (ILCD), time frame, range of time, period of time, time period, timespan, temporal boundary, time scale and time horizon]
Prospective modelling	A prospective LCA addresses future life cycle impacts using different modelling strategies (e.g. scenario-based, technology development curves and agent- or activity-based models). The <u>evolution</u> of systems is thus defined and/or simulated using a list of explicit assumptions regarding the future. <u>Prospective modelling</u> can be applied to both the technosphere and ecosphere and is a subset of the <u>dynamic of systems</u> , which only concerns future forecasts.
Temporal considerations	Any aspects (i.e. information) described in relation to the time dimension or <u>dynamic of systems</u> in the LCA framework. This is the overarching term relating to all other terms of the glossary. [Time-aspect in ILCD documents]
Temporal differentiation	The action of distributing the information on a time scale related to the <u>models' components</u> . For example, elementary flows could be described per day or year. Different processes representing yearly average are another example. [Temporal segmentation in ILCD]
Temporal resolution	Describes the time <u>granulometry</u> when <u>temporal differentiation</u> is carried out. For instance, a monthly or daily resolution can be used to describe the flows in technosphere models. The same term can be used to describe a time step for <u>period-specific CFs</u> . [Time step]
Temporal representativeness	Qualitative or quantitative assessment of data, processes or LCIA methods in relation to how appropriate their information fits with their <u>temporal scope</u> . [Time-related representativeness (ILCD), Time-related coverage (ISO14044)]
Temporal scope	Defines any type of period that is considered in a LCA study (e.g. temporal considerations along a life cycle, service life of a product, data collection period).
Temporalisation	Attribution of temporal properties to the <u>models' components</u> . (e.g. definition of <u>temporal scopes</u> )
Time horizon (TH)	Relative <u>temporal scope</u> over which environmental impacts are summed up to provide LCA results.

### 117 3. TEMPORAL CONSIDERATIONS FOR DIFFERENT PURPOSES

118 Many temporal considerations have been described in previous publications, reports and standards to develop the  
119 general LCA framework (ISO14040, 2006; ISO14044, 2006; Joint Research Center, 2010) and its dynamic  
120 counterpart. For instance, Sohn et al. (2020) classified 56 DLCA studies by their technological domains and  
121 types of assessed dynamism. In this section, the considerations are first regrouped by their purposes. A Venn  
122 diagram in figure 2 presents this organisation of temporal considerations where gold, purple and red rounded  
123 rectangles respectively highlight the purposes of defining the temporal scope, considering the dynamic of  
124 systems and increasing the temporal representativeness. 10 classes of temporal considerations are also presented



125 with rectangles of different colours and linked to the phases of the LCA framework where they most commonly  
 126 appear. In figure 2, the interpretation phase is excluded because the identified temporal considerations are first  
 127 accounted for in the three mentioned phases and can then be used to analyse the results.

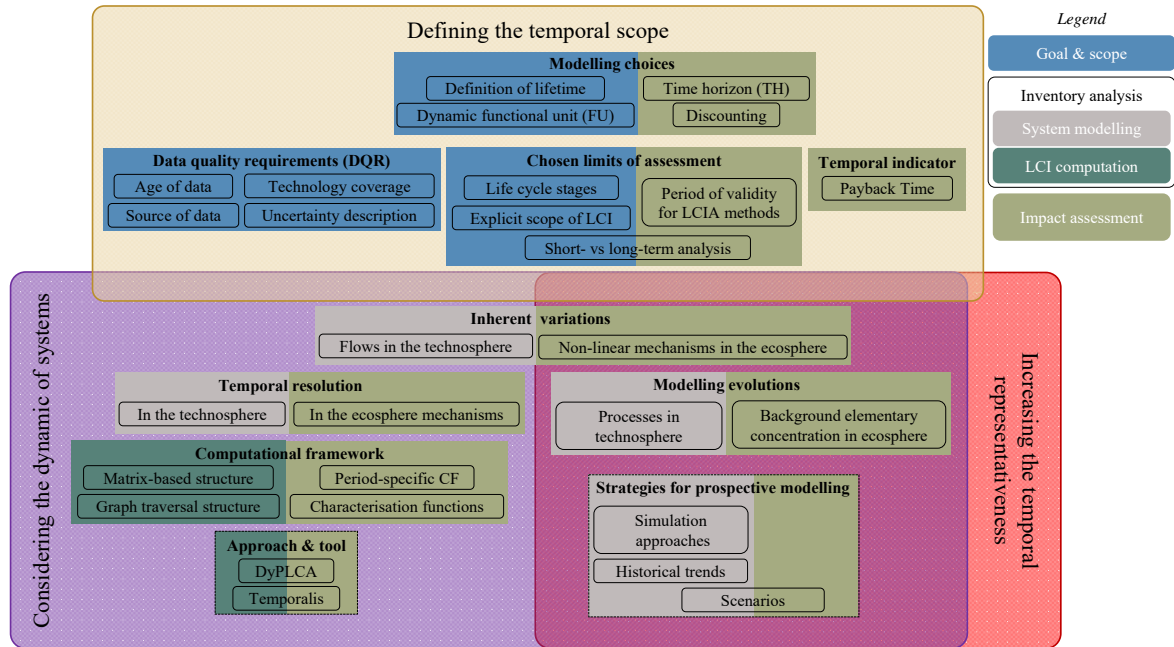


Figure 2: Venn diagram of temporal considerations in relation to their purposes (grey rectangles), the phases of the LCA methodology (coloured rectangles) and 10 classes (Bold titles). Existing connections are presented by arrows.

128  
 129 The level of relevance, conceptual development and operationalisation for the temporal considerations of figure  
 130 2 are qualitatively assessed with scores ranging from A (highest) to C (lowest) (detailed in table 2) to evaluate  
 131 the state-of-the-art shown in table 3. A more detailed analysis, including examples, is provided in the following  
 132 subsections to clarify the qualitative appraisal of table 3. Possible temporal feedback between the LCI and LCIA  
 133 are not assessed, although they may influence LCA results (Weidema et al., 2018).

134 Table 2. Meaning of different scores for the qualitative assessment of temporal considerations in LCA

Ranking categories	A	B	C
Relevance	Demonstrated at least in some LCA studies	Expected by authors of this article	Unknown
Conceptual development	A standard method is accepted by the LCA community	At least one method for consideration has been proposed	Theory or concepts have been explained
Operationalisation	Available in the data of most LCA studies when relevant	Some examples have been published	Not found in the literature

135

### 136 3.1. Phase of goal and scope definition

137 In the goal and scope definition, temporal considerations can be introduced by the modelling assumptions, data  
138 quality requirements (DQRs) and model limitations. They mostly offer insights on the temporal scope in which  
139 LCA studies are representative and useful. This temporal scope also provides an indication of when the dynamic  
140 of systems should be considered.

#### 141 3.1.1. Modelling choices

##### 142 *Definition of lifetime*

143 The lifetime of systems or products, which frames the use phase of the life cycle, is probably the most common  
144 temporal consideration in LCA studies (Anand and Amor, 2017; AzariJafari et al., 2016; Fitzpatrick, 2016; Helin  
145 et al., 2013; Mehmeti et al., 2016). This temporal scope, which is relative to the overall life cycle, has often been  
146 used to ensure a fairer comparison (Joint Research Center, 2010; Jolliet et al., 2010). However, more  
147 comprehensive temporal information on the full life cycle, which is not mandatory in international LCA  
148 standards (ISO14040, 2006; ISO14044, 2006), would be necessary to explicitly frame the full temporal scope  
149 over which elementary flows and impacts might occur. For example, a house can be used for a lifetime of 50  
150 years (Hoxha et al., 2016; Standardisation, 2009), but this temporal scope does not include the phase of forest  
151 growth, which supplies wood for the fabrication of the building's components (Breton et al., 2018; Fouquet et  
152 al., 2015) or for advanced biofuels (Albers et al., 2019a).

##### 153 *Dynamic functional units*

154 Some practitioners have suggested that the temporal scope should always be provided with the definition of  
155 questions (Finnveden et al., 2009; Huang et al., 2012; Ling-Chin et al., 2016) and functional units (FUs) (Inyim  
156 et al., 2016; Santero et al., 2011). The concept of dynamic FUs has been proposed (Kim et al., 2017), which  
157 could consider the evolution and comparability of products and would explicitly define the period of validity for  
158 a LCA study when the behaviour of consumers and markets have changed significantly. For example, the rapid  
159 evolution of technologies for mobile phones has changed their functionalities and demand thus modifying their  
160 global production volumes.

161 Table 3: List of temporal considerations in the LCA framework. Rankings for relevance, conceptual development and operationalisation are provided for each consideration on a scale from A to C  
 162 with their colour code (see table 2). The colour for the three columns of purpose is based on the code of figure 2. The numbers for the rows are the text's subsections.

Sections	Subsection	Temporal considerations	Defining temporal scope	Considering dynamics of systems	Increasing temporal representativeness	Relevance	Conceptual development	Operationalisation	
3.1 Phase of goal and scope definition	3.1.1 Modelling choices	Definition of lifetime	X			A	A	A	
		Dynamic FU	X			A	B	B	
	3.1.2 Data quality requirements (DQRs)	Age of data	X			A	A	B	
		Technology coverage	X			A	B	B	
		Source of data	X			A	C	A	
		Uncertainty description	X			A	B	B	
		Considered life cycle stages	X			A	A	A	
	3.1.3 Limits of assessment	Temporal scope of LCI	X			A	B	B	
		Short- vs Long-term	X			A	C	B	
3.2 Phase of inventory analysis: System modelling	3.2.1 Inherent variations	Flows in technosphere		X		A	B	B	
	3.2.2 Temporal resolution	In technosphere		X		B	B	B	
	3.2.3 Modelling evolution	Processes in technosphere		X		A	B	B	
	3.2.4 Prospective modelling	Simulation approaches			X	X	B	B	B
		Historical trends			X	X	A	B	B
		Use of scenarios		X	X	A	B	B	
3.3 Phase of inventory analysis: LCI computation	3.3.1 Framework	Matrix-based		X		A	B	B	
		Graph traversal		X		A	B	B	
	3.3.2 Approach and tool	DyPLCA		X		A	B	B	
		Temporalis		X		A	B	B	
3.4 Phase of impact assessment	3.4.1 Modelling choices	Time Horizons	X			A	A	A	
		Discounting	X			C	B	C	
	3.4.2 Limits of assessment	Period of validity	X			B	B	B	
		Short- vs Long-term	X			A	C	B	
	3.4.3 Temporal indicator	Payback time	X			B	B	B	
	3.4.4 Inherent variations	Non-linear mechanisms		X	X	B	B	C	
	3.4.5 Temporal resolution	Ecosphere mechanisms		X		B	C	C	
	3.4.6 Modelling evolution	Background concentration		X	X	B	B	C	
	3.4.7 Prospective modelling	Scenarios		X	X	B	B	B	
	3.4.8 Computational framework	Period-specific CFs		X	X	B	B	B	
Characterisation functions			X	X	C	C	C		
3.4.9 Approach and tool	DyPLCA		X		A	B	B		
	Temporalis		X		A	B	B		

163

### 164 3.1.2. Data quality requirements (DQR)

#### 165 *Age of data*

166 Some metadata of datasets, which should be defined in the DQR (ISO14044, 2006; Joint Research Center,  
167 2010), informs on their age and minimum length of time for data collection. Potential temporal discrepancies  
168 between used datasets and the targeted temporal scope of a modelled system can thus be partially evaluated.  
169 Such information also provides some insights on the temporal scope of a system model when it represents human  
170 activities (Bessou et al., 2013; Yuan et al., 2015). For example, the description of solar energy installations from  
171 the 1990s would probably be relevant for LCA of solar energy before 2000. Nevertheless, using such periods of  
172 validity require expert opinion, thus limiting the usefulness for this kind of metadata.

#### 173 *Technology coverage*

174 In some cases, the definition of technology coverage in the DQR of datasets can inform on the actual temporal  
175 scope of the study (ISO14040, 2006; ISO14044, 2006; Joint Research Center, 2010) with the ensuing qualitative  
176 assessment of temporal representativeness. For example,ecoinvent (Wernet et al., 2016) uses five levels of  
177 technology (i.e. new, modern, current, old and outdated) to describe transforming activities. Using datasets with  
178 new or modern technology levels should therefore be relevant for LCA studies on future products. However, this  
179 information is relative to each sector, as the modern level could be representative for 10 years of technology  
180 evolution in an established sector, whereas fast-paced sectors like electronics may use modern technologies for  
181 only 1 year before switching to new options.

#### 182 *Source of data*

183 The choice of data sources and the qualitative assessment of their overall representativeness provide an indirect  
184 assessment of the temporal scope for modelled systems and LCA studies (Rebitzer et al., 2004). For example,  
185 when data are sourced from scientific journals, date of publication is the primary indication for its period of  
186 validity. More precise temporal information is also often provided in case studies for systems with longer  
187 lifetimes or in DLCA studies like (Heeren et al., 2013; Pahari et al., 2015; Sohn et al., 2017a; Vuarnoz et al.,  
188 2018). The use of up-to-date LCA databases can bring a false sense of security on the temporal scope and  
189 representativeness of the data for recent products or systems. Indeed, database updates do not always follow the  
190 changes in market shares or evolution of technology because of the lack of new data.

191 Nevertheless, different temporal metadata is given for most datasets. For instance, ecoinvent guidelines (Wernet  
192 et al., 2016) require the definition of the date of generation, the date of review and the period of validity with a  
193 start date and end date for any dataset. These temporal considerations fulfil most of the requirements from ISO  
194 14044 (2006) except for the definition of the averaging period of dataset inputs. The ILCD handbook (2010) has  
195 set further requirements defining temporal properties: the expiring year of datasets and the duration of the life  
196 cycle, which respectively relates to the period of validity for LCI datasets and the temporal scope of elementary  
197 flows for a dataset. This metadata is available in most datasets of the ELCD (Recchioni et al., 2013). Many of  
198 these temporal metadata are more relevant to assess the temporal scopes of studies than the choice of a database  
199 and its version, but the place (e.g. in dataset descriptions) and the different definition under which they can be  
200 found hinder their use in most LCA studies.

### 201 *Uncertainty description*

202 The description of the uncertainty associated with flows (e.g. in ecoinvent (Wernet et al., 2016)) is another  
203 indirect source of information to clarify the temporal scope and period of validity. Indeed, the temporal  
204 correlation indicator provides a quantitative assessment of the discrepancy between the time when the data was  
205 acquired and the intended temporal scope for the dataset (Weidema et al., 2012). For example, a product flow  
206 with a temporal correlation indicator of 3 means that its value has been gathered between 6 and 9 years before or  
207 after the targeted temporal scope of the dataset. With the current definition of the temporal correlation indicator,  
208 the precision of this temporal information is rather low (i.e. >3-year period) and is widely missing in LCA  
209 databases and studies, limiting its applicability.

### 210 3.1.3. Chosen limits of assessment

211 The definition of limitations in the stage of goal and scope definition is probably the step where temporal scopes  
212 are defined with higher precision and clarity in LCA studies, even more in recent DLCA studies. While this is  
213 useful, typical LCA reports mainly offer qualitative definitions, which are not sufficiently transparent to describe  
214 the considered period in assessed life cycles.

### 215 *Considered stages of the life cycle*

216 LCA studies can limit the temporal scope of their analysed systems and LCIs by considering only a part of the  
217 life cycle. Setting the end-of-life outside the boundaries is an example of such a limited temporal scope. The ISO  
218 14044 (2006) allows this limitation, but only if they do not significantly change the overall conclusions of a  
219 study because such phases are not linked to significant impacts. Most of the LCA reports clearly state the

220 excluded life cycle stages, but they often provide an imprecise description for the limitation of the temporal  
221 scope. Moreover, the specification of the considered stages of a life cycle will not explicitly state the temporal  
222 scope in which elementary flows are considered (e.g. 2 years) nor offer a calendar-based period of occurrence  
223 (e.g. from January 2019 to December 2020).

#### 224 *Temporal scope of life cycle inventories*

225 More specific and precise descriptions of temporal scopes for LCI have been provided in recent scientific  
226 publications that focus on some temporal considerations (i.e. DLCA). For example, relative temporal scopes  
227 have been used to define the periods of LCIs for many studies on different products, for example considering the  
228 lifetime of wood-based products and buildings between 50 and 100 years (Fouquet et al., 2015; Levasseur et al.,  
229 2010) including tree growth period over 70 and 150 years (Levasseur et al., 2013; Pinsonnault et al., 2014) ,  
230 lifetime of marine photovoltaic of 20-30 years (Ling-Chin et al., 2016) and zinc fertiliser over 20 years crop  
231 rotation (Lebailly et al., 2014). In these cases, the LCIs are enclosed within a quantified period of time that can  
232 be relevant for some impact categories, but they lack any reference to a calendar year or period. Several DLCAs  
233 studies defined calendar-based temporal scopes, but discussions on the potential usefulness of this contextual  
234 information could be further enriched. Some were based on reference calendar years of building materials  
235 (Collinge et al., 2013b), hourly energy demand in buildings (Vuarnoz et al., 2018), as well as seasonal and  
236 annual variations in crop rotations (Caffrey and Veal, 2013). Other studies were based on calendar-specific  
237 periods detailing domestic hot water production (Beloin-Saint-Pierre et al., 2017), future biomass production  
238 (Menten et al., 2015), the lifetime of buildings (Roux et al., 2016a; Roux et al., 2016b), the energy use in hourly,  
239 daily and monthly temporal resolutions (Collinge et al., 2018; Karl et al., 2019), or for introducing back-time  
240 horizon (Tirutu-Barna et al., 2016).

#### 241 *Short- vs long-term analysis*

242 Several publications describe the temporal scopes of technosphere models (Dandres et al., 2012; Menten et al.,  
243 2015) or LCI (Finnveden et al., 2009; Morais and Delerue-Matos, 2010; Pettersen and Hertwich, 2008; Roder  
244 and Thornley, 2016) with adjectives such as short-, medium- or long-term. These qualitative and relative  
245 attributes thus inform the considered periods, but are vague. This lack of a precise temporal definition can be  
246 partly explained by the lack of consensus on how temporal scopes should be defined.

247

## 248 3.2. Phase of inventory analysis: system modelling

249 In the system-modelling step of the LCI phase, temporal considerations are found in the descriptions of the  
250 system inherent variations and evolution. They define the dynamics of systems and can improve the temporal  
251 representativeness of models for technosphere activities (i.e. network of processes). Although considering  
252 system evolution and inherent variations in both the foreground and the background data is still not a common  
253 practice, its importance has long been acknowledged in ISO 14040 (2006), stating that “*all significant system*  
254 *variations in time should be considered to get representative results*”.

255 Strategies to consider inherent variations and evolution have been proposed by different authors, mainly for  
256 energy (Amor et al., 2014; Zaines et al., 2015), transport (Tessum et al., 2012), agriculture (Fernandez-Mena et  
257 al., 2016; Yang and Suh, 2015) and waste management (Bakas et al., 2015). For example, the energy share of  
258 electricity production in a country varies throughout days, weeks, months and seasons (Beloin-Saint-Pierre et al.,  
259 2019; Vuarnoz and Jusselme, 2018). LCA case studies have shown that inherent temporal variations of  
260 production can have significant effects on results, mainly when consumption of these products is not constant  
261 over time.

### 262 3.2.1. Inherent variations with flow differentiation

263 Inherent variations can be modelled with temporal differentiation of flows or dynamic modelling. For instance,  
264 electricity production (Messagie et al., 2014; Vuarnoz and Jusselme, 2018; Walker et al., 2015) and its use in  
265 buildings (Collinge et al., 2013b; Collinge et al., 2018; Karl et al., 2019; Roux et al., 2016b; Roux et al., 2017;  
266 Vuarnoz et al., 2018; Walzberg et al., 2019a), cloud computing (Maurice et al. 2014) and wastewater treatment  
267 (de Faria et al. 2015) have all been modelled with such approaches. In different ways, all these approaches  
268 convert flows into temporal distributions, thus supplementing temporal properties to the core data of the model  
269 components in the LCA framework. The applicability of such data in other LCA studies is often limited because  
270 the temporal information is valid only for the temporal scope of a given case study. A way to address this  
271 limitation is to use a reference “time 0” in the temporal distribution as a period of occurrence relating to a  
272 starting period of a process (Beloin-Saint-Pierre et al., 2014; Tiruta-Barna et al., 2016). This “time mark” creates  
273 process-relative descriptions, which can be reused in any period of a life cycle or even for different life cycles.  
274 Tiruta-Barna et al. (2016) and Pigné et al. (2019) provided process-relative temporal distribution archetypes for  
275 ecoinvent v3.2, applicable to foreground and background datasets. As underlined by Beloin-Saint-Pierre et al.  
276 (2014), the additional efforts needed to provide temporal information for all the flows of LCA databases are still  
277 significant and the prioritisation of data-gathering remains important.

### 278 3.2.2. Temporal resolution

279 The level of temporal resolution to models the dynamics of systems depends on the sector and the modelling  
280 approach. For instance, hourly resolutions have been chosen for electricity production and consumption (Amor  
281 et al., 2014) or the transportation sector (Tessum et al., 2012). For assessing long-term emissions, for instance  
282 from waste treatment, a temporal resolution of centuries is more appropriate (Bakas et al., 2015). Some authors  
283 have proposed a temporal differentiation based on archetypes. For example, archetypal weather days (Risch et  
284 al., 2018) have been developed to contrast the relative importance of episodic wet weather versus continuous  
285 dry-weather loads. So far, studies about the consequences for choosing different temporal resolutions to describe  
286 the flows are limited. Indeed, only two examples are found in the building sector where a monthly resolution is  
287 deemed sufficient to consider most of the temporal variability (Beloin-Saint-Pierre et al., 2019; Karl et al., 2019).

### 288 3.2.3. Modelling evolutions with process differentiation

289 The basic strategy to describe evolution is to differentiate processes when a system is considered to change  
290 substantially over time. The key challenge here is to identifying when changes are significant enough without  
291 expert opinion on the modelled product. A simple application can be performed, if calendar-based periods of  
292 validity are consistently provided for all datasets in LCA databases; they could then be changed automatically  
293 when they are no longer valid representations over the full life cycle of any system. Such metadata is, however,  
294 required only in the (discontinued) ELCD database (see subsection 0) and, currently cannot be easily integrated  
295 in LCA software.

296 Collet et al. (2011) proposed an approach to tackle this problem and identify where temporal differentiation of  
297 processes during system modelling is needed. Their general idea is to recognise when the combined emission  
298 and impact dynamics justify the additional effort for temporal differentiation. Moreover, the selective  
299 introduction of the time dimension in background processes has been studied by Pinsonnault et al. (2014) and  
300 more recently by Pigné et al. (2019). The authors have shown that the temporal variations of a selection of  
301 background processes and the entire ecoinvent database can significantly affect climate change impacts for  
302 processes in some sectors (e.g. transport and building).



### 303 3.2.4. Prospective modelling

304 Modelling future evolution of systems is another common example of temporal considerations that is often  
305 performed under the umbrella of DLCA studies. Indeed, many DLCA studies have explored different  
306 prospective models for a range of products like: photovoltaic panels (Pehnt, 2006; Zhai and Williams, 2010),  
307 buildings (Collinge et al., 2013a; Frijia et al., 2012; Scheuer et al., 2003; Sohn et al., 2017a; Sohn et al., 2017b;  
308 Su et al., 2017), bioethanol (Pawelzik et al., 2013), passenger vehicles (Bauer et al., 2015; Miotti et al., 2017;  
309 Simons and Bauer, 2015), metals (Stasinopoulos et al., 2012) or ammonia (Mendivil et al., 2006). Any temporal  
310 assumptions made to define future evolution are thus considered for system modelling and LCI calculations.  
311 While major advances have been reached to offer explicit descriptions of assumptions made for temporal  
312 considerations in DLCA, *e.g.* (Collinge et al., 2013b; Herfray and Peuportier, 2012; Menten et al., 2015; Pehnt,  
313 2006; Roux et al., 2016b), they are currently not the standard. Prospective modelling assumptions can be  
314 grouped within three categories that have fundamental differences on how they justify their forecasting.

#### 315 *Simulation approaches*

316 Economic models, such as partial equilibrium models (PEM) or general equilibrium models (GEM), are  
317 frequently used in, but not limited to, consequential LCA modelling to simulate potential future evolution to  
318 assess direct and indirect consequences of decisions (*e.g.* climate policies) on large scale systems. Nevertheless,  
319 the current focus of using these models to assess consequences of changes in LCA studies should not hide their  
320 potential to offer possible development paths in prospective assessments. PEM generally focuses on one  
321 particular economic sector with a higher level of detail (*i.e.* technology rich), while GEM covers the whole  
322 economy with a lower level of detail (typically 30–50 economic sectors). For instance, PEMs have been used to  
323 model the energy sector in France (Albers et al., 2019c; Menten et al., 2015), or biogas production in  
324 Luxembourg (Marvuglia et al., 2013) and GEMs have been used to evaluate the consequences of different  
325 energy scenarios on the whole economy in Europe (Dandres et al., 2011). PEMs have also been coupled with  
326 GEMs to model the consequences of energy policy scenarios in an integrated manner (Igos et al., 2015) and they  
327 have been used in combination with dynamic models of biogenic and soil organic carbon for a similar purpose  
328 (Albers et al., 2020; Albers et al., 2019b).

329 The lack of consideration for human behaviour in PEM or GEM has recently been pointed out as a potential  
330 issue for the validity of the prospective models (Marvuglia et al., 2015). The use of agent- or activity-based  
331 models have therefore been proposed as alternatives to carry out prospective assessments; both in the foreground  
332 and in the background systems. Such models have mostly been used in consequential LCAs relating with

333 transport policies (Querini and Benetto, 2015), regional market penetration of electric vehicles (Noori and Tatari,  
334 2016), switch grass-based bioenergy systems (Miller et al., 2013), smart buildings (Walzberg et al., 2019b) or  
335 raw materials criticality (Knoeri et al., 2013), but could be used to predict future trends. The differences between  
336 the use of such simulation approaches in DLCA or consequential LCA studies have been discussed recently by  
337 Sohn *et al.* (2020).

#### 338 *Forecasting based on historic trends*

339 Some data sources (*e.g.* statistics on energy production) describe historic trends from which forecasting is made  
340 by extrapolation, assuming paradigm shifts will not occur. For instance, regression analysis was used to assess  
341 the evolution of energy systems (Pehnt, 2003a; Pehnt, 2003b; Pehnt, 2006; Yang and Chen, 2014) and the  
342 construction sector (Sandberg and Brattebø, 2012). The main strength of this approach is its simplicity and the  
343 potential to assess the observed level of variability of historic trends. It can thus provide averaged future trends  
344 and the expected variability (uncertainty). The main weakness, on the other hand, is the implicit assumption that  
345 historic trends are representative of the future, which is not always the case, particularly for emerging systems  
346 and technologies.

#### 347 *Using scenarios to explore potential futures*

348 Scenario-based modelling has been used in many sectors like waste management (Hellweg et al., 2005), water  
349 consumption (Pfister et al., 2011), bioenergy (Choi et al., 2012; Daly et al., 2015; Dandres et al., 2012; Earles et  
350 al., 2013; Igos et al., 2014; Menten et al., 2015), renewable electricity (Hertwich et al., 2015; Pehnt, 2006;  
351 Viebahn et al., 2011), transport (Cheah and Ieee, 2009; Garcia et al., 2015; Pehnt, 2003a; Pehnt, 2003b),  
352 chemicals (Alvarez-Gaitan et al., 2014) and buildings (Roux et al. 2016b). A general idea behind modelling  
353 scenarios is that exploring many potential futures may be simpler to justify than offering predictions on what the  
354 future will look like for a system as complex as human activities. For instance, Pesonen *et al.* (2000) defined that  
355 the scenarios describe possible future situations based on assumptions about the future and include developments  
356 from the present to the future. The authors distinguished between “what-if” and “cornerstone” scenarios  
357 (Pesonen et al., 2000), depending on the need to consider short- or long-term planning. “What-if” scenarios are  
358 often based on the field-specific expertise of LCA practitioners. Cornerstone scenarios explore many options  
359 with very different assumptions on the future to identify potential development paths. Another category is legally  
360 bound scenarios that explore future paths under the restriction of regulations.

### 361 3.3. Phase of inventory analysis: LCI computation

362 The computation of LCI transforms the information of a technosphere model into a set of elementary flows  
363 whose quantities are in relation to the FU of the assessed systems. The computation traditionally aggregates all  
364 flows of the same type over the entire life cycle.

#### 365 3.3.1. Computational framework

##### 366 *Matrix-based computation with process differentiation*

367 The conventional matrix-based computational approach can be used to calculate DLCIs, but with larger  
368 technosphere and ecosphere matrixes (Heijungs and Suh, 2002). Collinge et al. (2012; 2013b) used this approach  
369 on foreground processes to calculate the DLCI for each year of a building's life cycle. They concluded, similarly  
370 to Heijungs and Suh (2002), that the implementation brings significant challenges in data management when  
371 background databases are used. The challenges of this approach are twofold. Firstly, the temporal description of  
372 a system needs to be re-informed when the periods of assessment differ (*e.g.* 1980-2000 vs 2005-2025), if  
373 considered impacts are calendar-based. Secondly, the amount of data and the computational efforts depend on  
374 the required temporal precision (*e.g.* day vs. year) to describing all flows.

##### 375 *Graph traversal structure*

376 The Enhanced Structure Path Analysis (ESPA) approach (Beloin-Saint-Pierre et al., 2014) is one type of graph-  
377 based computational framework that convolves process-relative temporal distributions (see subsection 3.2.1) to  
378 propagate the temporal descriptions of flows. The general concept behind the ESPA framework (Beloin-Saint-  
379 Pierre et al., 2014; Maier et al., 2017) relates to one strategy of graph traversal algorithms (*i.e.* breadth-first), but  
380 other options have been explored. The depth-first search strategy (Tiruta-Barna et al., 2016) recommends a  
381 different traversal of supply chains, which is normally linked to lower memory requirements. The best-first  
382 search strategy (Cardellini et al., 2018) is another option that propagates the temporal information by prioritising  
383 the temporal distribution with higher contributions to impacts. All these options use process-relative temporal  
384 distributions, thus profiting from their reusability and the potential for higher temporal precision.

#### 385 3.3.2. Approaches and tools

386 Some commercial software tools use matrix-based computation (*e.g.* Simapro, Umberto) and could thus work  
387 with the process differentiation framework for the calculation of temporally differentiated LCI. To our  
388 knowledge, this option has not been implemented comprehensively in DLCA studies because LCA databases do  
389 not offer temporal details. The ESPA method has also not been developed into a computational tool and its

390 implementation has been limited to one simplified case study (Beloin-Saint-Pierre et al., 2017). Nevertheless,  
391 two options currently exist for full DLCI computations and are introduced in the following sub-sections.

#### 392 *DyPLCA*

393 DyPLCA has been implemented as a web tool (available at <http://dyplca.univ-lehavre.fr/>), originally presented  
394 by Tiruta-Barna et al. (2016), which uses the depth-first graph search strategy. The main parameters that  
395 balance accuracy vs. computation time in this tool are the temporal resolution of function integrals and  
396 the back time span. Common values for both are respectively 1 day and –50 years (i.e. 50 years before the  
397 period of occurrence for the FU). The computational intensity of the DLCI calculation has thus been  
398 resolved by a trade-off between accuracy and cut-offs. The process-relative temporal distributions can  
399 have different levels of detail to describe the flows in the system models. For instance, they can be detailed  
400 for foreground processes, as presented in Shimako *et al.* (2018), and can be rather generic for the  
401 background datasets.

402 DyPLCA currently works with a temporal differentiated ecoinvent v3.2 (Pigné et al., 2019), providing generic  
403 temporal descriptions to most background inventory processes. The DLCI results can be further used with static  
404 or DLCIA methods, as shown in studies on bioenergy production from microalgae (Shimako et al., 2016) and on  
405 grape production (Shimako et al., 2017).

#### 406 *Temporalis*

407 Temporalis (Cardellini et al., 2018) is a free and open source package of the Brightway2 LCA tool (Mutel,  
408 2017), using the best-first search strategy. The tool is fully compatible with many existing commercial LCA  
409 databases, but temporal descriptions of datasets are currently not provided. Temporalis does not require a fixed  
410 and continuous temporal resolution over any system models to provide DLCI or results for the impact  
411 assessment. Nevertheless, a DLCIA method for GWP based on the IPCC methodology (2013), is included. A  
412 simple case study for the temporal consideration of biogenic carbon flows was carried out with the method of  
413 Cherubini et al. (2012; 2011). It has shown that the LCI computation can be resolved on a regular laptop within a  
414 short time. Nevertheless, further developments still need to be completed before most LCA practitioners can use  
415 the tool easily.

#### 416 3.4. Phase of life cycle impact assessment

417 In the LCIA phase, temporal considerations affect many aspects that are linked to all phases of the LCA  
418 framework. For instance, the selection of a TH and changes of environmental mechanisms (i.e. impact pathways)  
419 over time are key modelling choices to characterise impacts in a DLCA framework.

##### 420 3.4.1. Modelling choices

421 LCIA is a complex task that requires many assumptions (e.g. the future state of the environment) and choices,  
422 which sometimes limit the validity of results to a specific temporal scope and introduce bias in the results. One  
423 of the most explicit and commonly used temporal considerations in LCIA methods is the TH, restricting the  
424 impact assessment to a specific period. Discounting is another modelling choices that can affect LCA results in  
425 similar ways to TH with links to its potential subjectivity (Lueddeckens et al., 2020).

##### 426 *Time Horizon*

427 The choice between a finite or infinite TH is a common type of temporal consideration that sums the  
428 environmental effects over a selected temporal scope (e.g. the 100-year TH for the GWP indicator). The  
429 consideration of different THs is used, for instance, by the ReCiPe method (Huijbregts et al., 2016), which builds  
430 on three cultural perspectives, proposed by Hofstetter et al. (2000). These perspectives are associated with  
431 different sets of calculation assumptions, including CFs with different THs for each impact category. For  
432 example, the “hierachist” perspective retains a 100-year TH for GWP and other categories, while “individualist”  
433 and “egalitarian” perspectives respectively use THs of 20 and 1000 years. Furthermore, very long THs are  
434 suggested for some impact categories such as for climate change (i.e. 1000 years) and ionising radiation (i.e.  
435 100,000 years). The ILCD handbook (2011) and the SimaPro Database Manual (PRé, 2016) provide additional  
436 insights into the use of THs in different LCIA methods, but there is not yet any standard on how to deal with  
437 long-term impacts and related uncertainties within all categories. For instance, the 5th IPCC assessment report  
438 (2014) removed the 500-year TH due to high uncertainties associated with the assumption of constant  
439 background concentrations.

440 To date, the choice of a TH remains a topic of discussion within the LCA community (Dyckhoff and Kasah,  
441 2014; Reap et al., 2008b) where three critical aspects are challenging the use of fixed and finite THs in LCIA  
442 methods:

- 443 • The first aspect is the inconsistency between the temporal boundaries of the studied systems and the TH of  
444 the LCIA methods (Benoist, 2009; Levasseur et al., 2010; Rosenbaum et al., 2015; Yang and Chen, 2014).

445 Indeed, it could be understood that effects from elementary flows beyond the chosen TH should not be  
446 considered. However, the effects are ultimately modelled over an invariable temporal scope, even if they  
447 occur at different periods during a life cycle (e.g. 100 years). This use of THs may thus lead to  
448 misrepresentations of impacts and their period of occurrence (Hellweg and Frischknecht, 2004), for  
449 instance, misleading decision-making concerning temporary storage and emission delays (Brandao and  
450 Levasseur, 2011; Jørgensen et al., 2015). This issue can be particularly significant for intermitting emissions  
451 like pesticides, where arbitrary cut-offs of emissions after pesticide application should influence how each  
452 emission contributes to related impacts of human toxicity (Fantke and Jolliet, 2016) and ecotoxicity (Peña et  
453 al., 2019).

454 • The second aspect refers to the time integration of substances with highly variable environmental effects  
455 over their lifetime in the ecosphere (e.g. aging effects reducing bioavailability of metals (Owsianiak et al.,  
456 2015) or transformation of persistent chemicals in the environment (Holmquist et al., 2020)), which can  
457 significantly bias the conclusions of LCA studies (Arodudu et al., 2017; Lebailly et al., 2014). In the case of  
458 GWP, the weight of forcers with very short atmospheric residence time decreases with an increasing TH  
459 (Levasseur et al., 2016; O'Hare et al., 2009), while a shorter TH increases the importance of short-lived  
460 gases. For example, methane (CH<sub>4</sub>), whose atmospheric lifetime is about 12.4 years, goes from a factor of  
461 84 CO<sub>2</sub>-eq for the 20-year TH to a factor of 28 CO<sub>2</sub>-eq for 100-year TH (Myhre et al., 2013). For further  
462 examples on this subject, Levasseur et al. (2016) presented various approaches that have been proposed for  
463 TH definition. For toxic substances, Huijbregts et al. (2001) demonstrated that TH variations can change  
464 impacts by up to 6.5 orders of magnitude for metal toxicity. In this case, the high dependency between CFs  
465 and the chosen TH is due to long residence times (i.e. persistence) in fate models, which increase metal run-  
466 offs and leaching potential to global marine and soil compartments.

467 • The third aspect relates to the temporal cut-offs that come with the selection of a fixed and finite THs, which  
468 can be ethically questioned in the context of intergenerational equity (Hellweg et al., 2003a). Indeed, these  
469 cut-offs raise concerns on the subjectivity of choosing a specific TH to highlight preferences between short-  
470 and long-term impact considerations (Lueddeckens et al., 2020). For instance, the 100-year TH in GWP is  
471 the most used and recommended option, but this preference is not justified by scientific facts (Reap et al.,  
472 2008b; Shine, 2009; Vogtländer et al., 2014) and is implicitly subjective for decision-making (Brandao and  
473 Levasseur, 2011; Fearnside, 2002). This 100-year TH is particularly important when temporary/permanent  
474 carbon storage or the delayed emissions from biogenic and fossil sources are evaluated or incentivised

475 (Guest and Stromman, 2014; Levasseur et al., 2012a). Moreover, emissions that are delayed after the 100-  
476 year scope are then considered to be permanently avoided (BSI, 2011; Joint Research Center, 2011).

477

478 A “simple” solution to remove such time preferences and value choices has been recommended by setting  
479 infinite THs in all cases. For instance, some LCIA methods (e.g. EDIP2003 (Hauschild et al., 2006), IMPACT  
480 2002+ (Jolliet et al., 2003), ReCiPe 2016 (Huijbregts et al., 2016)) use infinite or indefinite THs as a standard for  
481 stratospheric ozone depletion, human toxicity and ecotoxicity. In the case of the land use impact category, THs  
482 are generally not explicitly stated in current characterisation models (see e.g. Huijbregts et al. (2016) for  
483 biodiversity impacts or Müller-Wenk and Brandão (2010) for climate change). Even if the theoretical  
484 frameworks for land use impact assessment discusses changed (Beames et al., 2015) or permanent impacts and  
485 therefore the need for defining a TH (Canals et al., 2007; Koellner et al., 2013), permanent impacts are currently  
486 not considered in available characterisation models. Current models implicitly correspond to the choice of an  
487 infinite TH where impacts of each land use intervention is being integrated over time until the effect factor  
488 reaches 0, i.e. until the variations of soil quality after the land use intervention regenerates back to a reference  
489 soil quality. Regeneration time then plays a significant role in the effective integration period and in the  
490 definition of CFs.

#### 491 *Discounting*

492 This concept was discussed to value time in LCIA (Hellweg et al., 2003a; Pigné et al., 2019; Yuan and Dornfeld,  
493 2009; Zhai et al., 2011) and to deal with the uncertainties associated with time preferences and future emissions.  
494 The setting of finite THs is an implicit form of discounting for long-term impacts, using a zero discount rate over  
495 the TH, and an infinite discount rate beyond the TH. Discounting offers a trade-off between giving a higher  
496 value to present or future impacts. A more detailed discussion on this subject is provided by Lueddeckens et al.  
497 (2020).

#### 498 3.4.2. Chosen limits of assessment

499 The periods of validity for chosen LCIA methods and discussions on the short- or long-term nature of impacts  
500 are two types of temporal considerations that can inform on the temporal scope of a LCA study, whether this  
501 selection is voluntarily made by the practitioner or not.

#### 502 *Period of validity for LCIA methods*

503 Stating the period of validity (e.g. 2000 to 2010) or version for chosen LCIA methods in LCA studies is not  
504 common practice, but it can provide insights on the expected temporal scope (Bessou et al., 2011; Hauschild et  
505 al., 2013; Ling-Chin et al., 2016; Weidema et al., 2012). The choice of THs can also suggest an implicit  
506 definition of the considered period of validity. In an ideal world, the temporal scope of obtained LCIs and chosen



507 LCIA methods should be fitted to each other. Such a correspondence is desirable if CFs vary significantly over  
508 time, but it is currently difficult to implement in the available databases and software tools.

#### 509 *Short- vs long-term analysis*

510 Much like it has been said in the definition of the goal & scope (subsection 3.1.3), the adjectives of short- and  
511 long-term have been used to describe the temporal scope of LCIA methods (Arodudu et al., 2017; Chowdhury et  
512 al., 2017; Reap et al., 2008b). This lack of a precise temporal definition when stating short-, medium- and long-  
513 term can be partly explained by the differences in time scales of life cycles and environmental impacts for  
514 different systems. Furthermore, a commonly accepted standard does not yet exist to deal with long-term impacts  
515 and related uncertainties within all categories. For instance, the 5th IPCC assessment report (Myhre et al., 2013)  
516 removed the previously published 500-year TH due to the high uncertainties associated with the assumption of  
517 constant background concentrations.

#### 518 3.4.3. Temporal indicator

##### 519 *Payback time*

520 Payback times have been created to provide a temporal scope that informs on temporality of impacts. The basic  
521 idea is to calculate the necessary period to compensate for the “cradle-to-gate” impacts of any system. It has  
522 been mostly used to evaluate the time it takes to produce an amount of electricity that is equivalent to the  
523 primary energy use from the manufacturing of photovoltaic installations (Espinosa et al., 2012; Fthenakis and  
524 Alsema, 2006; Knapp and Jester, 2001), but it can be applied to energy use in many types of product (Elshout et  
525 al., 2015) or could also give payback time for other impact categories.

#### 526 3.4.4. Inherent variations

527 In conventional LCIA methods, CFs are determined with average or marginal approaches that model changes in  
528 the impact according to a change in the inventory (Frischknecht and Jolliet, 2016; Hauschild and Huijbregts,  
529 2015). With this average approach, the environmental disturbances from different activities are aggregated,  
530 historically referred to as “snapshots” of a studied system (Bright et al., 2011; Heijungs and Suh, 2002; Klöpffer,  
531 2014; Levasseur et al., 2016; Owens, 1997b; Vigon et al., 1993). For example, most existing models for  
532 characterising toxic impacts (Rosenbaum et al., 2008) assume constant environmental conditions for the  
533 assessment of health impacts. With this approach, inherent variations of the ecosphere are not considered.

534 *Non-linear mechanisms in the ecosphere*

535 The marginal approach addresses an impact resulting from a small change to a given background concentration.  
536 The impact is therefore positioned in relation to the current environmental state. For example, studies of human  
537 health impacts from exposure to fine particulate matter (PM<sub>2.5</sub>), where indoor, outdoor, urban and rural locations  
538 have shown significant differences in PM<sub>2.5</sub> background levels (Fantke et al., 2017). A non-linear exposure-  
539 response model thus accounts for these differences in PM<sub>2.5</sub> levels, reflecting a slope for low concentrations that  
540 are substantially higher than for high concentrations (Fantke et al., 2019).

541 Impact assessment models are representations of complex environmental mechanisms that depend on a long list  
542 of parameters, such as the lifetime of substances in the environment and the sensitivities of ecosystems over  
543 different temporal scopes (Lenzen et al., 2004). In many LCIA methods, CFs are defined from generic  
544 parameters values in stationary conditions (e.g. intervention quantity, baseline for target substances, and profiles  
545 of the soil composition) or for a given TH. Subsequently, impacts are assumed linearly proportional to the  
546 inventoried emissions, which enable the scaling of impacts to any functional unit. In reality, the involved  
547 environmental mechanisms are dynamic and often highly complex (Arbault et al., 2014). They depend on the  
548 physical, chemical and biological phenomena and non-linear interaction occurring in nature and are  
549 consequences of the elementary flows generated by human activities.

550 Time-dependent characterisation has been performed in some cases by modelling the dynamics for one or more  
551 of the three factors influencing an impact (i.e. environmental fate, exposure, and effects), thus creating a type of  
552 DLCIA methods. Effect data are typically not easily linked to temporal properties, allowing for temporal  
553 considerations in effect modelling (e.g. dose response for human effects or concentration response for ecological  
554 effects). Hence, time-dependent characterisation is usually only facilitated by considering the dynamics of  
555 systems in the fate and exposure factors of an impact pathway, which is usually enabled by models of the  
556 underlying mass balance for a given impact pathway. This has been implemented, for example, in toxicity-  
557 related impacts (Lebailly et al., 2014), where the system dynamics of the environmental fate factor are either  
558 solved via numerical integration (Shimako et al., 2017), or via matrix decomposition (Fantke et al., 2013).

559 3.4.5. Temporal resolution

560 *Specific temporal resolution for each elementary flow*

561 The temporal considerations within LCIA models may follow specific frequencies (e.g. *yearly changes*), as well  
562 as temporal-inherent features deriving from dynamic biogeochemical processes. The frequency can be

563 differentiated, for instance, as responding to episodic (*e.g.* initial land clearing), cyclical (*e.g.* seasonal water and  
564 pesticide use), stochastic (*e.g.* 1 in 20 years' waste discharge), or continual (*e.g.* fisheries yields) variations in the  
565 studied system (Lenzen et al., 2004). Cyclical or seasonal variations concerning sunlight, temperature and  
566 precipitation on the calendar year (*e.g.* winter vs summer time) are other examples of temporal considerations  
567 that could be relevant for impact categories like aquatic eutrophication (Udo de Haes et al., 2002), water scarcity  
568 (Boulay et al., 2015), human toxicity (Manneh et al., 2012) and photochemical oxidant formation (Shah and  
569 Ries, 2009). Such frequencies therefore highlight relevant temporal resolutions for the temporal differentiation of  
570 elementary flows in databases and DLCIs. Temporal inherent features may vary with hourly, daily, monthly or  
571 yearly constraints depending on temporal patterns or modelling time steps of the characterisation models (Collet,  
572 2012; Owens, 1997b).

573 The temporal scope of impact assessment itself may be aligned with the dynamics of governing biogeochemical  
574 processes to more accurately represent certain fate dynamics. For instance, Liao et al. (2015) found that common  
575 seeding-to-harvest assessment periods in agricultural LCAs do not correspond to the actual dynamics of  
576 fertilising substances, some of which contribute to eutrophication during the next crop rotation. The same  
577 concerns agricultural pesticides, where the time between the application and crop harvest drives related residues  
578 leading to human exposure (Fantke et al., 2011). Such fate dynamics can still be analysed and parameterised to  
579 fit steady-state models and associated impact pathways, such as human toxicity (Fantke et al., 2012; Fantke et  
580 al., 2013).

#### 581 3.4.6. Modelling evolutions

##### 582 *Considering variations for concentration substances and the state of the environment*

583 Elementary flows may have varying levels of effect, depending on the timing of emissions (*i.e.* period of  
584 occurrence) and the state of the environment (*i.e.* varying substance concentrations). Temporal considerations of  
585 environmental mechanisms in LCA studies are challenging because the current state of practice rarely allows to  
586 account for the periods of emission occurrences that are related to a product's life cycle (Finkbeiner et al., 2014;  
587 Hellweg and Frischknecht, 2004; Jørgensen et al., 2014; Kendall et al., 2009; Levasseur et al., 2010; Reap et al.,  
588 2008b). In fact, LCI flows are typically given as simple values that are considered to be a representation of  
589 steady or pulsed flows from and to the environment by most LCIA models. For instance, impacts  
590 characterisation methods often use an effect factor for a given concentration of pollutants in the background  
591 environment (Finnveden et al., 2009; Hauschild, 2005). Thus, the same amount and type of elementary flows  
592 (*i.e.* equivalent LCIs) can generate different levels of impacts because they have been emitted at different periods

593 of occurrence (*e.g.* 2016 or 2017), with varying flows (*i.e.* inherent variations) and geographies, requiring both  
594 temporal and spatial differentiation. In this case, calendar specifications may be relevant to assess and compare  
595 the evolution of impacts and/or background concentrations over time (*e.g.* 1990 Kyoto Protocol and the 1750  
596 IPCC reference years for climate change). The inherent variations in the state of the environment can also affect  
597 the CFs. For example, temporary changes in the carbon cycle from land use (Vazquez-Rowe et al., 2014) and  
598 related changes in the albedo of the land surface are two dynamic aspects that can bring variations in  
599 environmental impacts (Bright et al., 2012). Such variations are currently difficult to assess since they are not  
600 linked to "standard" elementary flows, which are always the source of impacts in the usual LCA framework.

#### 601 3.4.7. Strategies for prospective modelling

602 As is the case for technosphere models, it is, in principle, possible to forecast the environmental responses of the  
603 ecosphere to elementary emissions with the use of scenarios.

#### 604 *Scenarios*

605 An alternative form of temporal considerations in LCIA is increasingly performed on scenario-driven case  
606 studies. It has been applied to water use impacts by means of scenario-bound CFs, where each scenario  
607 represents a different prospective TH (Núñez et al., 2015). It is a step towards considering the temporal  
608 variability of environmental indicators, as most LCIA methods make the implicit assumption that the  
609 environment and its properties will not evolve over the studied life cycle. Another common example is the case  
610 of metal leaching in ground that has been forecasted with different scenarios (Huijbregts et al., 2001; Pettersen  
611 and Hertwich, 2008).

#### 612 3.4.8. Computational framework

613 Recently, some DLCIA methods have been developed with different computational frameworks. These  
614 approaches are key to understand the links between DLCIs and DLCIA methods, while offering potential  
615 pathways for future developments.

#### 616 *Period-specific characterisation factors*

617 In the last decade, LCA researchers have developed DLCIA methods addressing time dependent impacts as a  
618 function of time, yet they are mainly restricted to GWP and toxicity indicators. These DLCIA methods consider  
619 the periods of occurrence for emissions by providing different period-specific CFs to assess their impacts. For  
620 example, CFs can be calculated for each year over a chosen time horizon or for the month of January 2020.  
621 These CFs thus bring consistency between the temporal scopes of DLCI and impacts (Levasseur et al., 2010).

622 Different LCA scholars found that the results based on such DLCIA methods provide useful examples for  
623 decision-making, among others, on: “the intensity, extend and frequency of the impacts” (Lebailly et al., 2014),  
624 the sensitivity of the results to various TH choices (Levasseur et al. 2012b), and the optimisation options from  
625 scenario-bound simulations (Shimako et al., 2017). The DLCIA method developed by Levasseur *et al.*  
626 (Levasseur et al., 2010) is currently one of the most recognised and sophisticated approaches, featuring period-  
627 specific CFs. In addition, calendar-specifications can be relevant to assess and compare the evolution of impacts  
628 and/or background concentrations over time (*e.g.* 1990 Kyoto Protocol and the 1750 IPCC reference years for  
629 climate change).

#### 630 *Time-dependent characterisation functions*

631 Recent works (Shimako et al., 2017; Shimako et al., 2018; Shimako et al., 2016) have proposed to come back to  
632 the origins of impact simulation tools and adapt them by adding temporal information in the LCIA phase. The  
633 idea is to consider the opportunities of using DLCIs as inputs for DLCIA models. Such a DLCIA model has been  
634 proposed to assess toxicity impacts (human and ecotoxicity) by Shimako *et al.* (2017) and has been applied in a  
635 full DLCA study. The model reintroduces the time dimension for fate modelling of substances in the  
636 environment, providing the temporal distributions of substances in different environmental compartments. The  
637 physical parameters for the calculation of fate, exposure and effect factors were taken from the USEtox model.  
638 This method doesn't propose period-specific CFs, but directly calculates the impacts by coupling the impact  
639 model with all the available information in DLCIs.

640 The definition of ecotoxicity according to time also allows to evaluating the intensity of the impact for different  
641 periods of occurrence, which supports the identification of critical periods for potential impacts. The cumulated  
642 toxicity then represents the total damage generated over a TH. When compared with conventional USEtox  
643 results, obtained in steady state conditions, the DLCA results are systematically lower, but toxicity tends towards  
644 the conventional results for an infinite TH. Non-persistent substances (generally organic) generate almost all  
645 their hazard potential during their periods of emission and disappear more or less rapidly due to the degradation  
646 or transfer to sink compartments (removal). In contrast, persistent substances accumulate in environmental  
647 compartments during the emission periods and their toxicity potentials remain high after the emissions stop,  
648 potentially affecting many human generations.

#### 649 3.4.9. Approach and tools

650 As was explained in subsection 3.3.2, some examples of using combined DLCI and DLCIA methods have been  
651 published recently for DyPLCA (Shimako et al., 2017; Shimako et al., 2016) and Temporalis (Cardellini et al.,

652 2018) respectively for the toxicity and climate change categories. Still, this type of combination is rare and can  
653 only be done for few impact assessment methods with period-specific characterisation factors or time-dependent  
654 characterisation functions. Further developments are definitely required here to allow for a comprehensive  
655 consideration of the dynamics of impacts in future DLCA studies.

656 4. PROPOSED DEVELOPMENT PATHWAYS

657 It is rather straightforward to define key temporal considerations within the DLCA framework when the  
658 challenges of data availability and management are overlooked. Indeed, the general goal can be summarised by a  
659 desire to reach the highest level of temporal representativeness and to provide useful information for analysis,  
660 when considering the dynamic of systems in all of the model components. It would then seem relevant to:

- 661 • Clearly define calendar-based temporal scopes for all flows of a DLCI to outline the periods of elementary  
662 flow occurrences that justify the choice for DLCIA methods with specific temporal scopes or THs. This  
663 temporal information would also set a clear temporal frame of reference for all stakeholders who want to  
664 identify when their decisions will have effects. Moreover, a period of validity for the results of a LCA study  
665 should be set as mandatory information to offer an explicit estimation of the period when results can be  
666 considered representative and when updates would be necessary.
- 667 • Use comprehensive calendar-specific information for the models of the technosphere and ecosphere  
668 systems. It would thus be possible to clearly explain when historical data is considered representative.  
669 Prospective data based on forecasting strategies and CFs representing future impacts could also be reported  
670 explicitly to substantiate the basis for evolution of processes and their temporal scopes. A clear separation  
671 between historic and future-related results would then show the proportion of impacts that can only be based  
672 on forecasting assumptions.
- 673 • Describe the inherent variations of all flows and CFs over a life cycle with the necessary level of detail to  
674 minimise the temporal uncertainty of results. Temporal distributions of flows would be defined relative to  
675 systems' components for a common framework of assessment, which considers the dynamics of system and  
676 impacts that need to be modelled.

677 Reaching such a comprehensive and complex representation for temporal considerations in the LCA framework  
678 would considerably increase our ability to differentiate the impacts of different systems by removing most of the  
679 temporal uncertainties from simplifications, but it is probably out of reach and might not be necessary for most  
680 comparisons. Consequently, the current challenge lies more in finding the right balance between additional  
681 efforts for data collection, modelling complexity and sufficient temporal representativeness. The search for such  
682 a “simple but complex enough” implementation strategy is therefore the key to propose the next development  
683 steps for temporal considerations in DLCA.

#### 684 4.1. Stepwise approach for temporal considerations with current knowledge

685 While many developments can be proposed (see following sub-sections), it is important to recognise that we can already  
686 build a strategy from previous ideas and discussions on temporal considerations LCA (section 3). We thus suggest the  
687 following 14 steps and 9 questions within the four standard phases of the LCA framework to help practitioners in the  
688 identification of where and how temporal considerations could be included.

689 Figure 3 presents this stepwise general approach, which can be used for any study or system. Sector specific  
690 additions have been proposed for some cases like the building sector (Collinge et al., 2013b; Negishi et al., 2018;  
691 Pittau et al., 2019) and biogenic carbon (Breton et al., 2018; Guest et al., 2013), which could be used in some  
692 DLCA studies.

693 The colour code is the same as the one used in figure 2 to highlight connections where solid- or white-filled  
694 boxes respectively present common and rarer temporal considerations in current LCA studies. Some other  
695 remarks are important to use this stepwise approach. First, the chosen technosphere systems in step 1 (S1) is  
696 important to identify potential temporal discrepancies and sectors where DLCA is more often useful as explained  
697 in the introduction (e.g. buildings, energy). Second, the white-filled box of the goal & scope are mostly  
698 providing further information on different temporal scopes that are usually not explicitly defined in LCA studies.  
699 Third, step 9 (S9) and question 5 (Q5) are the initial places where the need to use a DLCA approach might be  
700 identified. Step 12 (S12) and question 7 (Q7) might also highlight such a need. In both cases, different options  
701 are available (i.e. S9a, S9b, S12a) depending on the aimed level of detail.

702 The final step (S14) of sensitivity analysis on temporal parameters is certainly useful but currently difficult to  
703 implement comprehensively, like what has been proposed by Collet et al. (2014), mainly because there is still a  
704 need for deeper investigation of this aspect for all impact categories. Nevertheless, some analyses on  
705 technological parameters of the technosphere models are possible and have been carried out for buildings  
706 (Asdrubali et al., 2020; Hu, 2018), photovoltaic installations (Louwen et al., 2016) and other renewable energy  
707 sources (Pehnt, 2006). A more complete analysis of ecoinvent v2.2 also showed the important variations of GWP  
708 when a DLCA was conducted for processes related to wood, biofuels, infrastructure and electricity (Pinsonnault  
709 et al., 2014). These examples show that potential technological improvements and increased lifetimes should be  
710 investigated in many DLCA studies, but it is not yet possible to provide a full overview of relevant temporal  
711 parameters in models.



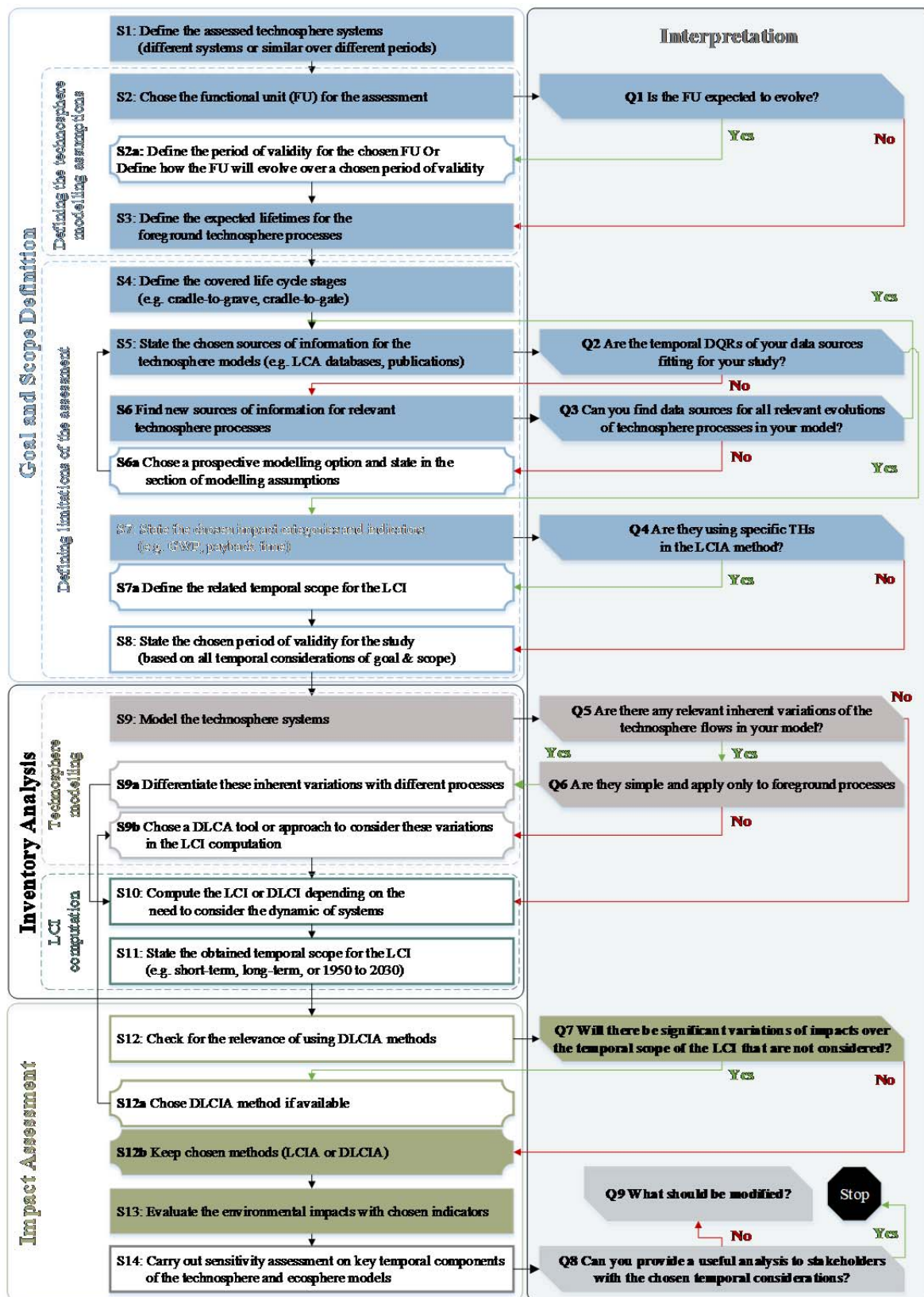


Figure 3: Stepwise approach to identify where and how to include temporal considerations in the LCA framework. S: Steps / Q: Questions / Green = Yes / Red = No

712

713

#### 714 4.2. Temporal considerations in the goal and scope definition

715 Temporal considerations, presented in section 3.1, mostly offer partial, implicit and qualitative information about  
716 when LCA studies are temporally representative or for when potential impacts are occurring. Temporal scopes of  
717 results in LCA studies are sometimes more explicitly defined, but they are not commonly provided, which  
718 hinders transparent and fair comparisons among results of different studies (Caffrey and Veal, 2013; Dandres et  
719 al., 2012; Huang et al., 2012; Woo et al., 2015). Lack of consistency in the vocabulary that describes the models'  
720 components and the linked LCIs or LCIA methods also brings some issues to simplify the exchange of temporal  
721 information. These obstacles should be addressed to access the wealth of information and metadata that is  
722 currently provided in LCA databases and studies. Two propositions are thus made for potential development  
723 pathways:

- 724 1. Recognise and use a common structure and vocabulary to discuss and exchange on the subject of temporal  
725 considerations in the DLCA framework, databases and studies (see section 2 for propositions).
- 726 2. Employ common metadata formats to automate the exchange of temporal information and thus provide  
727 access to the wealth of temporal information that is currently provided in LCA databases and studies, as well  
728 as to manage the expected significant increase in data requirements for this subject.

729 A specific example for automation is the development of guidelines to define the different temporal scopes  
730 consistently and periods of validity that should be provided in LCA databases for all datasets and studies for all  
731 processes. The authors are well aware of the challenge in asking a community to accept a common framework  
732 for such a broad subject, but data providers would benefit from the identification of common patterns and of  
733 "translation" options between data format.

#### 734 4.3. Time dependent modelling of human activities

735 Strategies to account for inherent variations and future evolution of systems and impacts have always been  
736 implicitly considered in LCA. The mere goal of summing elementary flows over the full life cycle is a testament  
737 of this. Nevertheless, most of the current studies show an implicit assumption that human activities and  
738 associated elementary flows will not change significantly over their temporal scopes or that such changes do not  
739 have to be considered to differentiate the environmental impacts of two products with equivalent functions.

740 Alternatively, DLCA studies start from the assumption that inherent variations, periods of occurrence and  
741 evolution need to be accounted. The basic principle is to consider such levels of temporal considerations with  
742 process differentiation, which turns out to be challenging due to the large amount of temporal information

743 needed whenever a comprehensive and detailed description of the life cycle is expected. The temporal  
744 differentiation of flows with process-relative temporal distributions has also been shown to be feasible, but has  
745 not yet been implemented in commercial databases. Given the current challenges and options, the next steps of  
746 development for time-dependent system modelling are suggested, as follows:

747 1. Carry out a comprehensive review of methodologies and approaches where dynamic modelling is  
748 considered in other fields of research to identify strategies that might not yet be proposed for the DLCA  
749 framework. For instance, DLCA is intrinsically rooted on modelling the dynamics of systems. Many models'  
750 components describe a large system, featuring several thousands of processes in the technology matrix and  
751 many hundreds of elementary flows in the intervention matrix. The introduction of timed variables in the  
752 matrixes and vectors of calculation can induce non-linear trends in the causal relationships. Delays might  
753 appear in the datasets (e.g. storage processes) or in the interventions (buffer zones at technosphere/ecosphere  
754 interface). The discontinuities form due to temporal switch between technical flows (e.g. seasonal supply) or  
755 abrupt release could also arise. All these aspects cause a real issue for solving, simulating and providing  
756 DLCA results under a reasonable computation time. Nonetheless, system dynamics is a well-studied topic in  
757 applied mathematics and control theory. The introduction of temporal considerations into the field of LCA  
758 would thus benefit from the knowledge of these research areas or disciplines.

759 2. Provide more process-relative temporal distributions to describe all flows and use these distributions within  
760 new computational tools. The identification of key sources for temporal variability within systems is  
761 probably the best way to start this work and will increase our knowledge on this subject in an iterative  
762 manner. Furthermore, process-relative descriptions should be combined with calendar-specific processes  
763 that change automatically when they are no longer representative of the operating technology or activity  
764 over the considered life cycle (i.e. period of validity). Furthermore, the temporal resolution that is sufficient  
765 for such distributions should be balanced with the efforts to describe the models (i.e. data management and  
766 gathering).

767 3. Consider that some technosphere flows or processes might have fixed historical settings when human  
768 activities are represented. For example, all elementary flows that are linked to the construction phase of  
769 hydro power plants in a country will not have different periods of occurrence if they are linked to past or  
770 future products.

771 4. Identify and define the temporal correlation of flows in current databases. From a mechanistic point of view,  
772 these relationships exist (e.g. carbon content in CO<sub>2</sub> from tailpipe emission depends on fuel consumption)

773 and LCA practitioners can use them when creating datasets. By making these relationships explicit, one  
774 could simplify the introduction of temporal considerations in datasets, as some are intrinsically linked over  
775 time (e.g. nitrate emissions at the crop level are strongly related to the crop production cycle).

776 5. Find solutions for temporal considerations with co-product management and allocation. Indeed, the avoided  
777 product approach raises the question of how avoided product(s) can be modelled in time. Should it be  
778 simultaneous to the co-product or following the co-product creation, assuming that the replacement will take  
779 place afterwards? A non-physical allocation raises other questions about temporal considerations. For  
780 instance, to ensure carbon balance, corrections are made when multi-output processes are split into several  
781 single-output processes. Artificial positive and negative CO<sub>2</sub> emissions are added up to match the carbon  
782 fixations to the carbon content of a product (Weidema, 2018). This approach is, for example, used in the  
783 ecoinvent database under “*At Point of Substitution (APOS)*” and “*Cut-off*” system models (Wernet et al.,  
784 2016). These allocation options question whether to maintain these flows in DLCIs, and if so, how to  
785 position these artificial flows over time. Therefore the period of occurrence will be difficult to justify in  
786 DLCA.

787 6. Offer more explicit and complete list of choices made for prospective (or retrospective) modelling and the  
788 use of scenarios. The reason for using such modelling approach is to provide results with future (or historic)  
789 perspectives that fit more with the objectives of LCA practitioners. It is important to recognise that it is  
790 currently challenging to find a consensus on a “best” option for any case study. In such a context, a more  
791 achievable goal is to improve the transparency of modelling choices. It would also be useful to separate the  
792 elementary flows that are linked to past and present processes from the ones that are based on prospective  
793 models. This would clarify the share of impacts issued from modelling assumptions in prospective models.

#### 794 4.4. Inventory calculation: keeping time in the LCI

795 The recently developed conceptual frameworks and tools (see subsections 3.3.1 and 3.3.2) employ a common  
796 computational structure based on graph search algorithms to calculate DLCIs. This structure uses process-  
797 relative temporal distributions to describe the flows within system models. Such a consensus suggests that the  
798 computational structure for DLCA and the corresponding tools could become a standard, but implementation  
799 challenges are still limiting their use. It thus seems relevant to:

800 1. Carry out more DLCA studies with these tools to increase the understanding of the LCA community and to  
801 develop the use of process-relative descriptions in LCA databases.

802 2. Check the importance of temporal resolution for flows in DLCI. A LCA system can represent many  
803 dynamics, because of the size of the system and the inherent temporal variations of the production  
804 processes, emissions and resource consumption, as well as of the environmental mechanisms. This issue has  
805 already been identified and discussed in some LCA studies where process dynamics are relevant. For  
806 instance, Collet et al. (2014) discussed the necessary match between the emission dynamic and the impact  
807 category to justify such temporal considerations. Shimako *et al.* (2018) dealt with the time step of  
808 simulations regarding the impact features and showed the gap between examples of climate change (year)  
809 and ecotoxicity (day). Urban traffic is another example of the time-resolution aspect that shows the  
810 relevance of intraday dynamic for commuters since they mainly travel at the beginning and the end of the  
811 working period. Moreover, let's consider, for the sake of clarity, that both carbon dioxide and particulate  
812 matter have an intraday emission dynamic. If this resolution seems suitable for the fate of particulate matter,  
813 it is clearly too short for climate change mechanisms, where a yearly resolution would be sufficient. The  
814 transportation activity also needs infrastructure, which is defined over decades, adding an even slower  
815 dynamic to the system. Consequently, urban traffic is a good example of a system that merges multiple time  
816 resolutions with fast and slow environmental effects. Investigating different systems with varying timescales  
817 will thus be relevant to identify temporal consistency in systems.

#### 818 4.5. Dynamics of impact assessment

819 Temporal considerations in methods for impact characterisation can be introduced with the choice of specific  
820 THs. The recent developments in DLCIA methods have focused on the impact categories of climate change,  
821 toxicity and ozone depletion, but there is the need to further explore temporal considerations in the phase of  
822 impact assessment for the following subjects:

- 823 1. Identify methods to consistently consider THs in DLCA studies for impact categories where it is relevant. A  
824 clear definition of the temporal scope covered by the LCIA methods would indeed be useful when impacts  
825 have strong time dependency. The choice of a TH should be based on the limits that are set in the goal and  
826 scope of a case study. However, to reduce value-laden choices, sensitivity analysis should be encouraged to  
827 assess the temporal variability in results. For instance, by determining the use of different THs or setting  
828 different end-years in the dynamic results when using period specific CFs.
- 829 2. Propose a clear list of the relevant time scales for each LCIA category to fix database requirements in the  
830 definition of elementary flows for any datasets. As explained before, environmental mechanisms for  
831 different impacts of substances will occur within diverse temporal scopes. These specific periods for each

832 impact category can therefore provide guidance on the required resolution of temporal distributions to  
833 describe the elementary flows of LCIs, while minimising the temporal uncertainty.

834 3. Update the considered background concentrations in ecosphere models (i.e. impact assessment methods)  
835 when they substantially change the obtained CFs for an impact category. Sensitivity analyses could be  
836 performed on past and current concentration levels in order to assess temporal variability of CFs, and to  
837 propose, if necessary, updated values for prospective and/or retrospective studies.

838 4. Propose strategies for transparent use of prospective assumptions in ecosphere models. Identifying the  
839 parameters that were or will be affected by historic or future modifications of the environment could be  
840 particularly relevant in the context of forecasting system evolution. Temporal parameters may be based on,  
841 for example, projections of population density, or scenario-bound background concentrations. A clear  
842 identification and transparent disclosure of the temporal parameters that most affect the calculation of CFs  
843 could indeed be an important added value for impact assessment methods.

844 Collaboration between experts of LCA databases, LCI computation and LCIA methods should be strengthened  
845 to develop a common framework for temporal considerations in any impact assessment methods.

#### 846 4.6. Summary of potential development paths for temporal considerations in DLCA

847 Table 4 presents a summary of the proposed developments from sections 4.2 to 4.5 with their main purposes  
848 along the different phases of the LCA framework and a qualitative assessment of the expected level of challenge  
849 to reach these targets. This assessment goes from + (i.e. basic efforts) to +++ (significant efforts).

850

851 Table 4: Summary of proposed development paths for temporal consideration in a DLCA framework

Proposed development paths	Purposes of the targets			Challenge level
	Defining the temporal scope	Considering the dynamics of systems	Increasing the temporal representativeness	
<b>4.2 Time in the goal and scope definition</b>				
1. Use of a standard glossary to describe temporal considerations in DLCA databases and studies	X	X		++
2. Use of common metadata descriptions to automate the exchange of temporal information	X	X		++
<b>4.3 Time dependent modelling of human activities</b>				
1. Investigate how other fields of research are modelling the dynamic of systems		X		+
2. Provide more process-relative temporal distributions in DLCA studies to describe flows		X		++
3. Identify the fixed historical nature of some technosphere processes	X	X	X	++
4. Describe the temporal correlation of flows in datasets of LCA databases		X		++
5. Find solution(s) for allocation that can be accepted by the LCA community		X	X	+++
6. Offer more explicit and complete list of choices made when prospective modelling is used	X	X	X	+++
<b>4.4 Inventory calculation with temporal properties</b>				
1. Carry out more DLCA studies with current approach and tool to increase understanding		X	X	++
2. Evaluate the importance of temporal resolution in the description of DLCIs for DLCIA		X		+++
<b>4.5 Dynamics of impact assessment</b>				
1. Consistent use of THs in DLCA studies with sensitivity assessment	X		X	+++
2. Provide lists of relevant time scales for each impact category	X			++
3. Update CFs when changes in background concentration have substantial effects			X	+
4. Offer more explicit and complete list of choices made when prospective modelling is used	X	X	X	+++

852

853 5. CONCLUSIONS

854 Considerable efforts have been made in the last 20 years to include temporal considerations within the LCA  
855 framework and to show that accounting for such aspects significantly affects the results of, at least, some case  
856 studies. For instance, LCA studies on systems with long lifespan (e.g. buildings) can benefit from models and  
857 tools where the dynamics of energy flows are considered with more details (i.e. variations and evolution).  
858 Periods of validity for datasets, which represent rapidly progressing technologies (e.g. photovoltaic cells), are  
859 important temporal information, provided in some LCA databases. Furthermore, dynamic LCIA methods have  
860 now been developed to account for impacts that vary significantly when the timing of emission change. Overall,  
861 the suggested approaches, tools and strategies increase the temporal representativeness of LCA studies and

862 decrease the temporal uncertainty of models the technosphere and its impacts. Nevertheless, their uses in current  
863 LCA studies are still uncommon, which can be explained mainly by a lack of consistent descriptions and the  
864 challenges of gathering temporal information.

865 With that in mind, we offer some propositions for the next steps of developments in the DLCA framework. A  
866 glossary is proposed to build a common and consistent understanding on the key concepts that often come up in  
867 discussions on the subject. This common understanding should then help in the use of the already available  
868 information that can be found in LCA databases and studies under different names. The consistent description of  
869 this metadata should also simplify the automated exchange of information between different software options  
870 and practitioners. The temporal boundaries of DLCIs (i.e. temporal scope) should be defined within a calendar-  
871 based description (e.g. between 1990 and 2020) to improve the potential for representativeness of the impact  
872 assessments and the fairness of comparison between systems. In addition, our overview on temporal  
873 considerations in the LCI phase suggests that a preferred pathway seems to emerge in the computational  
874 approach (i.e. graph search algorithms) for DLCA, but it will require the use of process-relative temporal  
875 distributions to describe flows in datasets (i.e. input format). This information should then provide temporal  
876 distributions for all elementary flows. A balance between necessary data collection efforts and reduction of  
877 uncertainties should define the temporal resolution of such distributions. It will also be important to consider the  
878 chosen DLCIA methods when selecting the temporal resolutions of flows. Lastly, the current development of the  
879 DLCIA methods should continue by pursuing the estimation of uncertainty and variability that comes up in all  
880 impact categories when temporal information is not provided to describe the input LCI. It is then recommended  
881 to identify a relevant level of temporal resolution that would minimise the temporal uncertainty of the models for  
882 impact assessments.

## 883 6. ACKNOWLEDGEMENTS

884 The authors want to thank both the Empa and IFPEN institutes for funding their work, which allowed time to  
885 work on the bulk of this review paper. The first author would also like to highlight that some of this work stems  
886 from his time at MINES ParisTech when he was under the supervision of Isabelle Blanc.

887



- 889 Albers A, Avadí A, Benoist A, Collet P, Hélias A. Modelling dynamic soil organic carbon flows of  
890 annual and perennial energy crops to inform energy-transport policy scenarios in  
891 France. *Science of The Total Environment* 2020; 718: 135278.
- 892 Albers A, Collet P, Benoist A, Hélias A. Back to the future: dynamic full carbon accounting applied  
893 to prospective bioenergy scenarios. *The International Journal of Life Cycle Assessment*  
894 2019a.
- 895 Albers A, Collet P, Benoist A, Hélias A. Data and non-linear models for the estimation of biomass  
896 growth and carbon fixation in managed forests. *Data in Brief* 2019b; 23: 103841.
- 897 Albers A, Collet P, Lorne D, Benoist A, Hélias A. Coupling partial-equilibrium and dynamic  
898 biogenic carbon models to assess future transport scenarios in France. *Applied Energy*  
899 2019c; 239: 316-330.
- 900 Alvarez-Gaitan JP, Short MD, Peters GM, MacGill I, Moore S. Consequential cradle-to-gate carbon  
901 footprint of water treatment chemicals using simple and complex marginal technologies  
902 for electricity supply. *The International Journal of Life Cycle Assessment* 2014; 19: 1974-  
903 1984.
- 904 Amor MB, Gaudreault C, Pineau P-O, Samson R. Implications of integrating electricity supply  
905 dynamics into life cycle assessment: a case study of renewable distributed generation,  
906 2014.
- 907 Anand CK, Amor B. Recent developments, future challenges and new research directions in LCA  
908 of buildings: A critical review. *Renewable & Sustainable Energy Reviews* 2017; 67: 408-  
909 416.
- 910 Arbault D, Riviere M, Rugani B, Benetto E, Tiruta-Barna L. Integrated earth system dynamic  
911 modeling for life cycle impact assessment of ecosystem services. *Science of the Total*  
912 *Environment* 2014; 472: 262-272.
- 913 Arodudu O, Helming K, Wiggering H, Voinov A. Towards a more holistic sustainability  
914 assessment framework for agro-bioenergy systems - A review. *Environmental Impact*  
915 *Assessment Review* 2017; 62: 61-75.
- 916 Asdrubali F, Baggio P, Prada A, Grazieschi G, Guattari C. Dynamic life cycle assessment modelling  
917 of a NZEB building. *Energy* 2020; 191: 116489.
- 918 Azarijafari H, Yahia A, Ben Amor M. Life cycle assessment of pavements: reviewing research  
919 challenges and opportunities. *Journal of Cleaner Production* 2016; 112: 2187-2197.
- 920 Bakas I, Hauschild MZ, Astrup TF, Rosenbaum RK. Preparing the ground for an operational  
921 handling of long-term emissions in LCA. *International Journal of Life Cycle Assessment*  
922 2015; 20: 1444-1455.
- 923 Bauer C, Hofer J, Althaus H-J, Del Duce A, Simons A. The environmental performance of current  
924 and future passenger vehicles: Life cycle assessment based on a novel scenario analysis  
925 framework. *Applied Energy* 2015; 157: 871-883.
- 926 Beames A, Broekx S, Heijungs R, Lookman R, Boonen K, Van Geert Y, et al. Accounting for land-  
927 use efficiency and temporal variations between brownfield remediation alternatives in  
928 life-cycle assessment. *Journal of Cleaner Production* 2015; 101: 109-117.
- 929 Beloin-Saint-Pierre D, Heijungs R, Blanc I. The ESPA (Enhanced Structural Path Analysis)  
930 method: a solution to an implementation challenge for dynamic life cycle assessment  
931 studies. *The International Journal of Life Cycle Assessment* 2014; 19: 861-871.
- 932 Beloin-Saint-Pierre D, Padey P, Périsset B, Medici V. Considering the dynamics of electricity  
933 demand and production for the environmental benchmark of Swiss residential buildings  
934 that exclusively use electricity. *IOP Conference Series: Earth and Environmental Science*  
935 2019; 323: 012096.
- 936 Beloin-Saint-Pierre D, Levasseur A, Margni M, Blanc I. Implementing a Dynamic Life Cycle  
937 Assessment Methodology with a Case Study on Domestic Hot Water Production. *Journal*  
938 *of Industrial Ecology* 2017.
- 939 Benoist A. Adapting Life-Cycle Assessment to biofuels: some elements from the first generation  
940 case. *École Nationale Supérieure des Mines de Paris*, 2009.

941 Bessou C, Basset-Mens C, Tran T, Benoist A. LCA applied to perennial cropping systems: a review  
942 focused on the farm stage. *International Journal of Life Cycle Assessment* 2013; 18: 340-  
943 361.

944 Bessou C, Ferchaud F, Gabrielle B, Mary B. Biofuels, greenhouse gases and climate change. A  
945 review. *Agronomy for Sustainable Development* 2011; 31: 1-79.

946 Boulay A-M, Bayart J-B, Bulle C, Franceschini H, Motoshita M, Muñoz I, et al. Analysis of water use  
947 impact assessment methods (part B): applicability for water footprinting and decision  
948 making with a laundry case study. *The International Journal of Life Cycle Assessment*  
949 2015; 20: 865-879.

950 Brandao M, Levasseur A. Assessing Temporary Carbon Storage in Life Cycle Assessment and  
951 Carbon Footprinting: Outcomes of an expert workshop. Luxembourg: Joint Research  
952 Centre - Institute for Environment and Sustainability, 2011.

953 Breton C, Blanchet P, Amor B, Beauregard R, Chang W-S. Assessing the Climate Change Impacts  
954 of Biogenic Carbon in Buildings: A Critical Review of Two Main Dynamic Approaches.  
955 *Sustainability* 2018; 10.

956 Bright RM, Cherubini F, Stromman AH. Climate impacts of bioenergy: Inclusion of carbon cycle  
957 and albedo dynamics in life cycle impact assessment. *Environmental Impact Assessment*  
958 *Review* 2012; 37: 2-11.

959 Bright RM, Strømman AH, Peters GP. Radiative Forcing Impacts of Boreal Forest Biofuels: A  
960 Scenario Study for Norway in Light of Albedo. *Environmental Science & Technology*  
961 2011; 45: 7570-7580.

962 BSI. Specification for the assessment of the life cycle greenhouse gas emissions of goods and  
963 services. PAS 2050:2011, London, 2011.

964 Caffrey KR, Veal MW. Conducting an Agricultural Life Cycle Assessment: Challenges and  
965 Perspectives. *Scientific World Journal* 2013.

966 Canals LMI, Bauer C, Depestele J, Dubreuil A, Knuchel RF, Gaillard G, et al. Key elements in a  
967 framework for land use impact assessment within LCA. *International Journal of Life*  
968 *Cycle Assessment* 2007; 12: 5-15.

969 Cardellini G, Mutel CL, Vial E, Muys B. Temporalis, a generic method and tool for dynamic Life  
970 Cycle Assessment. *Science of The Total Environment* 2018; 645: 585-595.

971 Cheah LW, Ieee. *Materials Flow Analysis and Dynamic Life-cycle Assessment of Lightweight*  
972 *Automotive Materials in the US Passenger Vehicle Fleet*, 2009.

973 Cherubini F, Guest G, Stromman AH. Application of probability distributions to the modeling of  
974 biogenic CO<sub>2</sub> fluxes in life cycle assessment. *Global Change Biology Bioenergy* 2012; 4:  
975 784-798.

976 Cherubini F, Peters GP, Berntsen T, Strømman AH, Hertwich E. CO<sub>2</sub> emissions from biomass  
977 combustion for bioenergy: atmospheric decay and contribution to global warming. *GCB*  
978 *Bioenergy* 2011; 3: 413-426.

979 Choi JK, Friley P, Alfstad T. Implications of energy policy on a product system's dynamic life-  
980 cycle environmental impact: Survey and model. *Renewable & Sustainable Energy*  
981 *Reviews* 2012; 16: 4744-4752.

982 Chowdhury RB, Moore GA, Weatherley AJ, Arora M. Key sustainability challenges for the global  
983 phosphorus resource, their implications for global food security, and options for  
984 mitigation. *Journal of Cleaner Production* 2017; 140: 945-963.

985 Collet P. Analyse de Cycle de Vie de la valorisation énergétique de la biomasse algale : prise en  
986 compte des aspects dynamiques dans l'étape d'inventaire, 2012.

987 Collet P, Hélias A, Lardon L, Steyer J-P. Time and Life Cycle Assessment: How to Take Time into  
988 Account in the Inventory Step? In: Finkbeiner M, editor. *Towards Life Cycle*  
989 *Sustainability Management*. Springer Netherlands, Dordrecht, 2011, pp. 119-130.

990 Collet P, Lardon L, Steyer JP, Helias A. How to take time into account in the inventory step: a  
991 selective introduction based on sensitivity analysis. *International Journal of Life Cycle*  
992 *Assessment* 2014; 19: 320-330.

993 Collinge W, Landis AE, Jones AK, Schaefer LA, Bilec MM. Indoor environmental quality in a  
994 dynamic life cycle assessment framework for whole buildings: Focus on human health  
995 chemical impacts. *Building and Environment* 2013a; 62: 182-190.

- 996 Collinge WO, DeBois JC, Sweriduk ME, Landis AE, Jones AK, Schaefer LA, et al. Measuring Whole-  
 997 Building Performance with Dynamic LCA: a Case Study of a Green University Building. In:  
 998 Ventura A, de la Roche C, editors. International Symposium on Life Cycle Assessment and  
 999 Construction. RILEM, 2012, pp. 309-317.
- 1000 Collinge WO, Landis AE, Jones AK, Schaefer LA, Bilec MM. Dynamic life cycle assessment:  
 1001 framework and application to an institutional building. *International Journal of Life Cycle*  
 1002 *Assessment* 2013b; 18: 538-552.
- 1003 Collinge WO, Rickenbacker HJ, Landis AE, Thiel CL, Bilec MM. Dynamic Life Cycle Assessments of  
 1004 a Conventional Green Building and a Net Zero Energy Building: Exploration of Static,  
 1005 Dynamic, Attributional, and Consequential Electricity Grid Models. *Environmental*  
 1006 *Science & Technology* 2018; 52: 11429-11438.
- 1007 Daly HE, Scott K, Strachan N, Barrett J. Indirect CO<sub>2</sub> Emission Implications of Energy System  
 1008 Pathways: Linking IO and TIMES Models for the UK. *Environmental Science &*  
 1009 *Technology* 2015; 49: 10701-10709.
- 1010 Dandres T, Gaudreault C, Tirado-Seco P, Samson R. Assessing non-marginal variations with  
 1011 consequential LCA: Application to European energy sector. *Renewable and Sustainable*  
 1012 *Energy Reviews* 2011; 15: 3121-3132.
- 1013 Dandres T, Gaudreault C, Tirado-Seco P, Samson R. Macroanalysis of the economic and  
 1014 environmental impacts of a 2005-2025 European Union bioenergy policy using the GTAP  
 1015 model and life cycle assessment. *Renewable & Sustainable Energy Reviews* 2012; 16:  
 1016 1180-1192.
- 1017 de Faria ABB, Sperandio M, Ahmadi A, Tiruta-Bama L. Evaluation of new alternatives in  
 1018 wastewater treatment plants based on dynamic modelling and life cycle assessment  
 1019 (DM-LCA). *Water Research* 2015; 84: 99-111.
- 1020 Dyckhoff H, Kasah T. Time Horizon and Dominance in Dynamic Life Cycle Assessment. *Journal of*  
 1021 *Industrial Ecology* 2014; 18: 799-808.
- 1022 Earles JM, Halog A, Ince P, Skog K. Integrated Economic Equilibrium and Life Cycle Assessment  
 1023 Modeling for Policy-based Consequential LCA. *Journal of Industrial Ecology* 2013; 17:  
 1024 375-384.
- 1025 Elshout PMF, Zelm Rv, Balkovic J, Obersteiner M, Schmid E, Skalsky R, et al. Greenhouse-gas  
 1026 payback times for crop-based biofuels. *Nature Climate Change* 2015; 5: 604-610.
- 1027 Espinosa N, Hösel M, Angmo D, Krebs FC. Solar cells with one-day energy payback for the  
 1028 factories of the future. *Energy & Environmental Science* 2012; 5: 5117-5132.
- 1029 Fantke P, Aurisano N, Bare J, Backhaus T, Bulle C, Chapman PM, et al. Toward harmonizing  
 1030 ecotoxicity characterisation in life cycle impact assessment. *Environmental Toxicology*  
 1031 *and Chemistry* 2018; 37: 2955-2971.
- 1032 Fantke P, Jolliet O. Life cycle human health impacts of 875 pesticides. *International Journal of*  
 1033 *Life Cycle Assessment* 2016; 21: 722-733.
- 1034 Fantke P, Jolliet O, Apte JS, Hodas N, Evans J, Weschler CJ, et al. Characterizing Aggregated  
 1035 Exposure to Primary Particulate Matter: Recommended Intake Fractions for Indoor and  
 1036 Outdoor Sources. *Environmental Science & Technology* 2017; 51: 9089-9100.
- 1037 Fantke P, Juraske R, Antón A, Friedrich R, Jolliet O. Dynamic Multicrop Model to Characterize  
 1038 Impacts of Pesticides in Food. *Environmental Science & Technology* 2011; 45: 8842-  
 1039 8849.
- 1040 Fantke P, McKone TE, Tainio M, Jolliet O, Apte JS, Stylianou KS, et al. Global Effect Factors for  
 1041 Exposure to Fine Particulate Matter. *Environmental Science & Technology* 2019; 53:  
 1042 6855-6868.
- 1043 Fantke P, Wieland P, Juraske R, Shaddick G, Itoiz ES, Friedrich R, et al. Parameterization Models  
 1044 for Pesticide Exposure via Crop Consumption. *Environmental Science & Technology*  
 1045 2012; 46: 12864-12872.
- 1046 Fantke P, Wieland P, Wannaz C, Friedrich R, Jolliet O. Dynamics of pesticide uptake into plants:  
 1047 From system functioning to parsimonious modeling. *Environmental Modelling &*  
 1048 *Software* 2013; 40: 316-324.
- 1049 Fearnside PM. Time preference in global warming calculations: a proposal for a unified index.  
 1050 *Ecological Economics* 2002; 41: 21-31.

- 1051 Fernandez-Mena H, Nesme T, Pellerin S. Towards an Agro-Industrial Ecology: A review of  
 1052 nutrient flow modelling and assessment tools in agro-food systems at the local scale.  
 1053 *Science of the Total Environment* 2016; 543: 467-479.
- 1054 Finkbeiner M, Ackermann R, Bach V, Berger M, Brankatschk G, Chang Y-J, et al. Challenges in Life  
 1055 Cycle Assessment: An Overview of Current Gaps and Research Needs. In: Klöpffer W,  
 1056 editor. *Background and Future Prospects in Life Cycle Assessment*. Springer  
 1057 Netherlands, Dordrecht, 2014, pp. 207-258.
- 1058 Finnveden G, Hauschild MZ, Ekvall T, Guinee J, Heijungs R, Hellweg S, et al. Recent developments  
 1059 in Life Cycle Assessment. *Journal of Environmental Management* 2009; 91: 1-21.
- 1060 Fitzpatrick JJ. Environmental sustainability assessment of using forest wood for heat energy in  
 1061 Ireland. *Renewable & Sustainable Energy Reviews* 2016; 57: 1287-1295.
- 1062 Fouquet M, Lévassieur A, Margni M, Lebert A, Lasvaux S, Souyri B, et al. Methodological  
 1063 challenges and developments in LCA of low energy buildings: Application to biogenic  
 1064 carbon and global warming assessment. *Building and Environment* 2015; 90: 51-59.
- 1065 Frijia S, Guhathakurta S, Williams E. Functional Unit, Technological Dynamics, and Scaling  
 1066 Properties for the Life Cycle Energy of Residences. *Environmental Science & Technology*  
 1067 2012; 46: 1782-1788.
- 1068 Frischknecht R, Jolliet O. *Global Guidance for Life Cycle Impact Assessment Indicators*. 1, Paris,  
 1069 2016.
- 1070 Fthenakis V, Alsema E. Photovoltaics energy payback times, greenhouse gas emissions and  
 1071 external costs: 2004 - early 2005 status. *Progress in Photovoltaics* 2006; 14: 275-280.
- 1072 Garcia R, Gregory J, Freire F. Dynamic fleet-based life-cycle greenhouse gas assessment of the  
 1073 introduction of electric vehicles in the Portuguese light-duty fleet. *International Journal*  
 1074 *of Life Cycle Assessment* 2015; 20: 1287-1299.
- 1075 Guest G, Cherubini F, Strømman AH. Global Warming Potential of Carbon Dioxide Emissions  
 1076 from Biomass Stored in the Anthroposphere and Used for Bioenergy at End of Life.  
 1077 *Journal of Industrial Ecology* 2013; 17: 20-30.
- 1078 Guest G, Stromman AH. Climate Change Impacts Due to Biogenic Carbon: Addressing the Issue of  
 1079 Attribution Using Two Metrics With Very Different Outcomes. *Journal of Sustainable*  
 1080 *Forestry* 2014; 33: 298-326.
- 1081 Hauschild M, Goedkoop M, Guinée J, Heijungs R, Huijbregts M, Jolliet O, et al. Identifying best  
 1082 existing practice for characterisation modeling in life cycle impact assessment. *The*  
 1083 *International Journal of Life Cycle Assessment* 2013; 18: 683-697.
- 1084 Hauschild MZ. Assessing environmental impacts in a life-cycle perspective. *Environmental*  
 1085 *Science & Technology* 2005; 39: 81A-88A.
- 1086 Hauschild MZ, Huijbregts MAJ. *Life Cycle Impact Assessment*: Springer Netherlands, 2015.
- 1087 Hauschild MZ, Potting J, Hertel O, Schopp W, Bastrup-Birk A. Spatial differentiation in the  
 1088 characterisation of photochemical ozone formation - The EDIP2003 methodology.  
 1089 *International Journal of Life Cycle Assessment* 2006; 11: 72-80.
- 1090 Heeren N, Jakob M, Martius G, Gross N, Wallbaum H. A component based bottom-up building  
 1091 stock model for comprehensive environmental impact assessment and target control.  
 1092 *Renewable & Sustainable Energy Reviews* 2013; 20: 45-56.
- 1093 Heijungs R, Suh S. *The Computational Structure of Life Cycle Assessment*. Vol 11. Dordrecht, The  
 1094 Netherlands: Kluwer Academic, 2002.
- 1095 Helin T, Sokka L, Soimakallio S, Pingoud K, Pajula T. Approaches for inclusion of forest carbon  
 1096 cycle in life cycle assessment - a review. *Global Change Biology Bioenergy* 2013; 5: 475-  
 1097 486.
- 1098 Hellweg S, Frischknecht R. Evaluation of Long-Term Impacts in LCA. In: *LCA DFO*, editor. 22nd  
 1099 Discussion Forum on LCA. Discussion Forum on LCA, Zurich, 2004, pp. 339-341.
- 1100 Hellweg S, Hofstetter TB, Hungerbühler K. Discounting and the environment - Should current  
 1101 impacts be weighted differently than impacts harming future generations? *International*  
 1102 *Journal of Life Cycle Assessment* 2003a; 8: 8-18.
- 1103 Hellweg S, Hofstetter TB, Hungerbühler K. Discounting and the environment should current  
 1104 impacts be weighted differently than impacts harming future generations? *The*  
 1105 *International Journal of Life Cycle Assessment* 2003b; 8: 8.

1106 Hellweg S, Hofstetter TB, Hungerbühler K. Time-dependent life-cycle assessment of slag landfills  
1107 with the help of scenario analysis: the example of Cd and Cu. *Journal of Cleaner*  
1108 *Production* 2005; 13: 301-320.

1109 Hellweg S, Milà i Canals L. Emerging approaches, challenges and opportunities in life cycle  
1110 assessment. *Science* 2014; 344: 1109.

1111 Herfray G, Peuportier B. Evaluation of Electricity Related Impacts Using a Dynamic LCA Model.  
1112 In: Ventura A, de la Roche C, editors. *International Symposium on Life Cycle Assessment*  
1113 *and Construction*. RILEM, 2012, pp. 300-308.

1114 Herrchen M. Perspective of the systematic and extended use of temporal and spatial aspects in  
1115 LCA of long-lived products. *Chemosphere* 1998; 37: 265-270.

1116 Hertwich EG, Gibon T, Bouman EA, Arvesen A, Suh S, Heath GA, et al. Integrated life-cycle  
1117 assessment of electricity-supply scenarios confirms global environmental benefit of low-  
1118 carbon technologies. 2015.

1119 Hofstetter P, Baumgartner T, Scholz RW. Modelling the valuesphere and the ecosphere:  
1120 Integrating the decision makers' perspectives into LCA. *The International Journal of Life*  
1121 *Cycle Assessment* 2000; 5: 161.

1122 Holmquist H, Fantke P, Cousins IT, Owsianiak M, Liagkouridis I, Peters GM. An (Eco)Toxicity Life  
1123 Cycle Impact Assessment Framework for Per- And Polyfluoroalkyl Substances.  
1124 *Environmental Science & Technology* 2020; 54: 6224-6234.

1125 Hoxha E, Jusselme T, Andersen M, Rey E. Introduction of a dynamic interpretation of building  
1126 LCA results: the case of the smart living (lab) building in Fribourg, Switzerland.  
1127 *Sustainable Built Environment (SBE)*, 2016.

1128 Hu M. Dynamic life cycle assessment integrating value choice and temporal factors—A case  
1129 study of an elementary school. *Energy and Buildings* 2018; 158: 1087-1096.

1130 Huang CL, Vause J, Ma HW, Yu CP. Using material/substance flow analysis to support sustainable  
1131 development assessment: A literature review and outlook. *Resources Conservation and*  
1132 *Recycling* 2012; 68: 104-116.

1133 Huijbregts MAJ, Guinee JB, Reijnders L. Priority assessment of toxic substances in life cycle  
1134 assessment. III: Export of potential impact over time and space. *Chemosphere* 2001; 44:  
1135 59-65.

1136 Huijbregts MAJ, Steinmann ZJN, Elshout PMF, Stam G, Verones F, Vieira MDM, et al. ReCiPe2016.  
1137 A harmonized life cycle impact assessment method at midpoint and endpoint level.  
1138 National Institute for Public Health and the Environment, Nijmegen, 2016.

1139 Igos E, Rugani B, Rege S, Benetto E, Drouet L, Zachary D, et al. Integrated environmental  
1140 assessment of future energy scenarios based on economic equilibrium models.  
1141 *Metallurgical Research & Technology* 2014; 111: 179-189.

1142 Igos E, Rugani B, Rege S, Benetto E, Drouet L, Zachary DS. Combination of equilibrium models  
1143 and hybrid life cycle-input-output analysis to predict the environmental impacts of  
1144 energy policy scenarios. *Applied Energy* 2015; 145: 234-245.

1145 Inyim P, Pereyra J, Bienvenu M, Mostafavi A. Environmental assessment of pavement  
1146 infrastructure: A systematic review. *Journal of Environmental Management* 2016; 176:  
1147 128-138.

1148 IPCC. *Climate Change 2013: The Physical Science Basis*. Contribution of Working Group I to the  
1149 Fifth Assessment Report of the Intergovernmental Panel on Climate Change. In: Press CU,  
1150 editor. IPCC, Cambridge, United Kingdom and New York, NY, USA, 2013, pp. 1535.

1151 IPCC. *Climate Change 2014: Synthesis Report*. Contribution of Working Groups I, II and III to the  
1152 Fifth Assessment Report of the Intergovernmental Panel on Climate Change. IPCC,  
1153 Geneva, Switzerland, 2014, pp. 151.

1154 ISO14040. *Life cycle assessment Principles and framework*. Environmental management, 2006.

1155 ISO14044. *Life cycle assessment Requirements and guidelines*. Environmental management,  
1156 2006.

1157 Joint Research Center IfEaS, European Commission. *ILCD Handbook - General Guide for Life*  
1158 *Cycle Assessment - Detailed Guidance*. Vol EUR 24708 EN. Luxembourg: Publication  
1159 office of the european union, 2010.

1160 Joint Research Center IfEaS, European Commission. ILCD handbook: Recommendations for Life  
1161 Cycle Impact Assessment in the European context. Luxembourg: EC-JRC, 2011.

1162 Jolliet O, Margni M, Charles R, Humbert S, Payet J, Rebitzer G, et al. IMPACT 2002+: A new life  
1163 cycle impact assessment methodology. *International Journal of Life Cycle Assessment*  
1164 2003; 8: 324-330.

1165 Jolliet O, Saadé M, Crettaz P, Shaked S. Analyse du cycle de vie - Comprendre et réaliser un  
1166 écobilan. EPFL - Lausanne - Suisse: Presses polytechniques et universitaires romandes,  
1167 2010.

1168 Jørgensen SV, Hauschild MZ, Nielsen PH. Assessment of urgent impacts of greenhouse gas  
1169 emissions—the climate tipping potential (CTP). *The International Journal of Life Cycle*  
1170 *Assessment* 2014; 19: 919-930.

1171 Jørgensen SV, Hauschild MZ, Nielsen PH. The potential contribution to climate change mitigation  
1172 from temporary carbon storage in biomaterials. *The International Journal of Life Cycle*  
1173 *Assessment* 2015; 20: 451-462.

1174 Karl AAW, Maslesa E, Birkved M. Environmental performance assessment of the use stage of  
1175 buildings using dynamic high-resolution energy consumption and data on grid  
1176 composition. *Building and Environment* 2019; 147: 97-107.

1177 Kendall A. Time-adjusted global warming potentials for LCA and carbon footprints. *International*  
1178 *Journal of Life Cycle Assessment* 2012; 17: 1042-1049.

1179 Kendall A, Chang B, Sharpe B. Accounting for Time-Dependent Effects in Biofuel Life Cycle  
1180 Greenhouse Gas Emissions Calculations. *Environmental Science & Technology* 2009; 43:  
1181 7142-7147.

1182 Kim SJ, Kara S, Hauschild M. Functional unit and product functionality—addressing increase in  
1183 consumption and demand for functionality in sustainability assessment with LCA. *The*  
1184 *International Journal of Life Cycle Assessment* 2017; 22: 1257-1265.

1185 Klöpffer W. Introducing Life Cycle Assessment and its Presentation in 'LCA Compendium'. In:  
1186 Klöpffer W, editor. *Background and Future Prospects in Life Cycle Assessment*. Springer  
1187 Netherlands, Dordrecht, 2014, pp. 1-37.

1188 Knapp K, Jester T. Empirical investigation of the energy payback time for photovoltaic modules.  
1189 *Solar Energy* 2001; 71: 165-172.

1190 Knoeri C, Waeger PA, Stamp A, Althaus HJ, Weil M. Towards a dynamic assessment of raw  
1191 materials criticality: Linking agent-based demand - With material flow supply modelling  
1192 approaches. *Science of the Total Environment* 2013; 461: 808-812.

1193 Koellner T, de Baan L, Beck T, Brandao M, Civit B, Margni M, et al. UNEP-SETAC guideline on  
1194 global land use impact assessment on biodiversity and ecosystem services in LCA.  
1195 *International Journal of Life Cycle Assessment* 2013; 18: 1188-1202.

1196 Lebailly F, Levasseur A, Samson R, Deschenes L. Development of a dynamic LCA approach for the  
1197 freshwater ecotoxicity impact of metals and application to a case study regarding zinc  
1198 fertilization. *International Journal of Life Cycle Assessment* 2014; 19: 1745-1754.

1199 Lenzen M, Dey CJ, Murray SA. Historical accountability and cumulative impacts: the treatment of  
1200 time in corporate sustainability reporting. *Ecological Economics* 2004; 51: 237-250.

1201 Levasseur A, Brandao M, Lesage P, Margni M, Pennington D, Clift R, et al. Valuing temporary  
1202 carbon storage. *Nature Clim. Change* 2012a; 2: 6-8.

1203 Levasseur A, Cavalett O, Fuglestvedt JS, Gasser T, Johansson DJA, Jørgensen SV, et al. Enhancing  
1204 life cycle impact assessment from climate science: Review of recent findings and  
1205 recommendations for application to LCA. *Ecological Indicators* 2016; 71: 163-174.

1206 Levasseur A, Lesage P, Margni M, Brandao M, Samson R. Assessing temporary carbon  
1207 sequestration and storage projects through land use, land-use change and forestry:  
1208 comparison of dynamic life cycle assessment with ton-year approaches. *Climatic Change*  
1209 2012b; 115: 759-776.

1210 Levasseur A, Lesage P, Margni M, Deschenes L, Samson R. Considering Time in LCA: Dynamic  
1211 LCA and Its Application to Global Warming Impact Assessments. *Environmental Science*  
1212 *& Technology* 2010; 44: 3169-3174.

1213 Levasseur A, Lesage P, Margni M, Samson R. Biogenic Carbon and Temporary Storage Addressed  
1214 with Dynamic Life Cycle Assessment. *Journal of Industrial Ecology* 2013; 17: 117-128.

- 1215 Liao WJ, van der Werf HMG, Salmon-Monviola J. Improved Environmental Life Cycle Assessment  
 1216 of Crop Production at the Catchment Scale via a Process-Based Nitrogen Simulation  
 1217 Model. *Environmental Science & Technology* 2015; 49: 10790-10796.
- 1218 Ling-Chin J, Heidrich O, Roskilly AP. Life cycle assessment (LCA) - from analysing methodology  
 1219 development to introducing an LCA framework for marine photovoltaic (PV) systems.  
 1220 *Renewable & Sustainable Energy Reviews* 2016; 59: 352-378.
- 1221 Louwen A, van Sark WGJHM, Faaij APC, Schropp REI. Re-assessment of net energy production  
 1222 and greenhouse gas emissions avoidance after 40 years of photovoltaics development.  
 1223 *Nature Communications* 2016; 7: 13728.
- 1224 Lueddeckens S, Saling P, Guenther E. Temporal issues in life cycle assessment—a systematic  
 1225 review. *The International Journal of Life Cycle Assessment* 2020.
- 1226 Maier M, Mueller M, Yan XY. Introducing a localised spatio-temporal LCI method with wheat  
 1227 production as exploratory case study. *Journal of Cleaner Production* 2017; 140: 492-501.
- 1228 Manneh R, Margni M, Deschênes L. Evaluating the relevance of seasonal differentiation of human  
 1229 health intake fractions in life cycle assessment. *Integrated Environmental Assessment  
 1230 and Management* 2012; 8: 749-759.
- 1231 Marvuglia A, Benetto E, Rege S, Jury C. Modelling approaches for consequential life-cycle  
 1232 assessment (C-LCA) of bioenergy: Critical review and proposed framework for biogas  
 1233 production. *Renewable and Sustainable Energy Reviews* 2013; 25: 768-781.
- 1234 Marvuglia A, Kanevski M, Benetto E. Machine learning for toxicity characterisation of organic  
 1235 chemical emissions using USEtox database: Learning the structure of the input space.  
 1236 *Environment International* 2015; 83: 72-85.
- 1237 Maurice E, Dandres T, Moghaddam RF, Nguyen K, Lemieux Y, Cherriet M, et al. Modelling of  
 1238 Electricity Mix in Temporal Differentiated Life-Cycle-Assessment to Minimize Carbon  
 1239 Footprint of a Cloud Computing Service. *ICT for Sustainability 2014 (ICT4S-14)*. Atlantis  
 1240 Press, 2014.
- 1241 McManus MC, Taylor CM. The changing nature of life cycle assessment. *Biomass and Bioenergy*  
 1242 2015; 82: 13-26.
- 1243 Mehmeti A, McPhail SJ, Pumiglia D, Carlini M. Life cycle sustainability of solid oxide fuel cells:  
 1244 From methodological aspects to system implications. *Journal of Power Sources* 2016;  
 1245 325: 772-785.
- 1246 Mendivil R, Fischer U, Hirao M, Hungerbühler K. A New LCA Methodology of Technology  
 1247 Evolution (TE-LCA) and its Application to the Production of Ammonia (1950-2000) (8  
 1248 pp). *The International Journal of Life Cycle Assessment* 2006; 11: 98-105.
- 1249 Menten F, Tchung-Ming S, Lorne D, Bouvart F. Lessons from the use of a long-term energy model  
 1250 for consequential life cycle assessment: The BTL case. *Renewable & Sustainable Energy  
 1251 Reviews* 2015; 43: 942-960.
- 1252 Messagie M, Mertens J, Oliveira L, Rangaraju S, Sanfeliix J, Coosemans T, et al. The hourly life cycle  
 1253 carbon footprint of electricity generation in Belgium, bringing a temporal resolution in  
 1254 life cycle assessment. *Applied Energy* 2014; 134: 469-476.
- 1255 Miller SA, Moysey S, Sharp B, Alfaro J. A Stochastic Approach to Model Dynamic Systems in Life  
 1256 Cycle Assessment. *Journal of Industrial Ecology* 2013; 17: 352-362.
- 1257 Miotti M, Hofer J, Bauer C. Integrated environmental and economic assessment of current and  
 1258 future fuel cell vehicles. *The International Journal of Life Cycle Assessment* 2017; 22: 94-  
 1259 110.
- 1260 Morais SA, Delerue-Matos C. A perspective on LCA application in site remediation services:  
 1261 Critical review of challenges. *Journal of Hazardous Materials* 2010; 175: 12-22.
- 1262 Müller-Wenk R, Brandão M. Climatic impact of land use in LCA—carbon transfers between  
 1263 vegetation/soil and air. *The International Journal of Life Cycle Assessment* 2010; 15:  
 1264 172-182.
- 1265 Mutel C. Brightway: An open source framework for Life Cycle Assessment. *Journal of Open  
 1266 Source Software* 2017; 2: 236.
- 1267 Myhre G, Shindell D, Bréon F-M, Collins W, Fuglestvedt J, Huang J, et al. Anthropogenic and  
 1268 Natural Radiative Forcing. In: IPCC, editor. *Climate Change 2013: The Physical Science  
 1269 Basis*. Contribution of Working Group I to the Fifth Assessment Report of the

1270 Intergovernmental Panel on Climate Change [Stocker, T.F., D. Qin, G.-K. Plattner, M.  
1271 Tignor, S.K. Allen, J. Boschung, A. Nauels, Y. Xia, V. Bex and P.M. Midgley (eds.)]. IPCC,  
1272 Cambridge, United Kingdom and New York, NY, USA, 2013, pp. 659-740.

1273 Negishi K, Lebert A, Almeida D, Chevalier J, Tiruta-Barna L. Evaluating climate change pathways  
1274 through a building's lifecycle based on Dynamic Life Cycle Assessment. *Building and  
1275 Environment* 2019; 164: 106377.

1276 Negishi K, Tiruta-Barna L, Schiopu N, Lebert A, Chevalier J. An operational methodology for  
1277 applying dynamic Life Cycle Assessment to buildings. *Building and Environment* 2018;  
1278 144: 611-621.

1279 Noori M, Tatari O. Development of an agent-based model for regional market penetration  
1280 projections of electric vehicles in the United States. *Energy* 2016; 96: 215-230.

1281 Núñez M, Pfister S, Vargas M, Antón A. Spatial and temporal specific characterisation factors for  
1282 water use impact assessment in Spain. *The International Journal of Life Cycle  
1283 Assessment* 2015; 20: 128-138.

1284 O'Hare M, Plevin RJ, Martin JI, Jones AD, Kendall A, Hopson E. Proper accounting for time  
1285 increases crop-based biofuels' greenhouse gas deficit versus petroleum. *Environmental  
1286 Research Letters* 2009; 4: 024001.

1287 Owens JW. Life-Cycle Assessment in Relation to Risk Assessment: An Evolving Perspective. *Risk  
1288 Analysis* 1997a; 17: 359-365.

1289 Owens JW. Life-Cycle Assessment: Constraints on Moving from Inventory to Impact Assessment.  
1290 *Journal of Industrial Ecology* 1997b; 1: 37-49.

1291 Owsianiak M, Holm PE, Fantke P, Christiansen KS, Borggaard OK, Hauschild MZ. Assessing  
1292 comparative terrestrial ecotoxicity of Cd, Co, Cu, Ni, Pb, and Zn: The influence of aging  
1293 and emission source. *Environmental Pollution* 2015; 206: 400-410.

1294 Pahri SDR, Mohamed AF, Samat A. LCA for open systems: a review of the influence of natural and  
1295 anthropogenic factors on aquaculture systems. *International Journal of Life Cycle  
1296 Assessment* 2015; 20: 1324-1337.

1297 Pawelzik P, Carus M, Hotchkiss J, Narayan R, Selke S, Wellisch M, et al. Critical aspects in the life  
1298 cycle assessment (LCA) of bio-based materials – Reviewing methodologies and deriving  
1299 recommendations. *Resources, Conservation and Recycling* 2013; 73: 211-228.

1300 Pehnt M. Assessing future energy and transport systems: The case of fuel cells - Part 2:  
1301 Environmental performance. *International Journal of Life Cycle Assessment* 2003a; 8:  
1302 365-378.

1303 Pehnt M. Assessing future energy and transport systems: The case of fuel cells Part I:  
1304 Methodological aspects. *International Journal of Life Cycle Assessment* 2003b; 8: 283-  
1305 289.

1306 Pehnt M. Dynamic life cycle assessment (LCA) of renewable energy technologies. *Renewable  
1307 Energy* 2006; 31: 55-71.

1308 Peña N, Knudsen MT, Fantke P, Antón A, Hermansen JE. Freshwater ecotoxicity assessment of  
1309 pesticide use in crop production: Testing the influence of modeling choices. *Journal of  
1310 Cleaner Production* 2019; 209: 1332-1341.

1311 Pesonen H-L, Ekvall T, Fleischer G, Huppel G, Jahn C, Klos ZS, et al. Framework for scenario  
1312 development in LCA. *The International Journal of Life Cycle Assessment* 2000; 5: 21.

1313 Pettersen J, Hertwich EG. Critical review: Life-cycle inventory procedures for long-term release  
1314 of metals. *Environmental Science & Technology* 2008; 42: 4639-4647.

1315 Pfister S, Bayer P, Koehler A, Hellweg S. Projected water consumption in future global  
1316 agriculture: Scenarios and related impacts. *Science of The Total Environment* 2011; 409:  
1317 4206-4216.

1318 Pigné Y, Gutiérrez TN, Gibon T, Schaubroeck T, Popovici E, Shimako AH, et al. A tool to  
1319 operationalize dynamic LCA, including time differentiation on the complete background  
1320 database. *The International Journal of Life Cycle Assessment* 2019.

1321 Pinsonnault A, Lesage P, Lévassieur A, Samson R. Temporal differentiation of background  
1322 systems in LCA: relevance of adding temporal information in LCI databases. *The  
1323 International Journal of Life Cycle Assessment* 2014; 19: 1843-1853.



1324 Pittau F, Habert G, Iannaccone G. A Life-Cycle Approach to Building Energy Retrofitting: Bio-  
1325 Based Technologies for Sustainable Urban Regeneration. IOP Conference Series: Earth  
1326 and Environmental Science 2019; 290: 012057.

1327 PRé va. SimaPro Database Manual - Methods Library, 2016, pp. 67.

1328 Querini F, Benetto E. Combining Agent-Based Modeling and Life Cycle Assessment for the  
1329 Evaluation of Mobility Policies. Environmental Science & Technology 2015; 49: 1744-  
1330 1751.

1331 Reap J, Roman F, Duncan S, Bras B. A survey of unresolved problems in life cycle assessment -  
1332 Part 1. The International Journal of Life Cycle Assessment 2008a; 13: 290-300.

1333 Reap J, Roman F, Duncan S, Bras B. A survey of unresolved problems in life cycle assessment -  
1334 Part 2. International Journal of Life Cycle Assessment 2008b; 13: 374-388.

1335 Rebitzer G, Ekvall T, Frischknecht R, Hunkeler D, Norris G, Rydberg T, et al. Life cycle  
1336 assessment: Part 1: Framework, goal and scope definition, inventory analysis, and  
1337 applications. Environment International 2004; 30: 701-720.

1338 Recchioni M, Mathieux F, Goralczyk M, Schau EM. ILCD Data Network and ELCD Database:  
1339 current use and further needs for supporting Environmental Footprint and Life Cycle  
1340 Indicator Projects. Joint Research Centre, Ispra, Italy, 2013, pp. 33.

1341 Risch E, Gasperi J, Gromaire M-C, Chebbo G, Azimi S, Rocher V, et al. Impacts from urban water  
1342 systems on receiving waters – How to account for severe wet-weather events in LCA?  
1343 Water Research 2018; 128: 412-423.

1344 Roder M, Thornley P. Bioenergy as climate change mitigation option within a 2 degrees C target-  
1345 uncertainties and temporal challenges of bioenergy systems. Energy Sustainability and  
1346 Society 2016; 6.

1347 Rosenbaum RK, Anton A, Bengoa X, Bjørn A, Brain R, Bulle C, et al. The Glasgow consensus on the  
1348 delineation between pesticide emission inventory and impact assessment for LCA. The  
1349 International Journal of Life Cycle Assessment 2015; 20: 765-776.

1350 Rosenbaum RK, Bachmann TM, Gold LS, Huijbregts MAJ, Jolliet O, Juraske R, et al. USEtox-the  
1351 UNEP-SETAC toxicity model: recommended characterisation factors for human toxicity  
1352 and freshwater ecotoxicity in life cycle impact assessment. International Journal of Life  
1353 Cycle Assessment 2008; 13: 532-546.

1354 Roux C, Schalbart P, Assoumou E, Peuportier B. Integrating climate change and energy mix  
1355 scenarios in LCA of buildings and districts. Applied Energy 2016a; 184: 619-629.

1356 Roux C, Schalbart P, Peuportier B. Accounting for temporal variation of electricity production  
1357 and consumption in the LCA of an energy-efficient house. Journal of Cleaner Production  
1358 2016b; 113: 532-540.

1359 Roux C, Schalbart P, Peuportier B. Development of an electricity system model allowing dynamic  
1360 and marginal approaches in LCA—tested in the French context of space heating in  
1361 buildings. The International Journal of Life Cycle Assessment 2017; 22: 1177-1190.

1362 Saez de Bikuña K, Hamelin L, Hauschild MZ, Pilegaard K, Ibrom A. A comparison of land use  
1363 change accounting methods: seeking common grounds for key modeling choices in  
1364 biofuel assessments. Journal of Cleaner Production 2018; 177: 52-61.

1365 Sandberg NH, Brattebø H. Analysis of energy and carbon flows in the future Norwegian dwelling  
1366 stock. Building Research & Information 2012; 40: 123-139.

1367 Santero N, Loijos A, Akbarian M, Ochsendorf J. Methos, Impacts, and Opportunities in the  
1368 Concrete Pavement Life Cycle. MIT, USA, 2011, pp. 103.

1369 Scheuer C, Keoleian GA, Reppe P. Life cycle energy and environmental performance of a new  
1370 university building: modeling challenges and design implications. Energy and Buildings  
1371 2003; 35: 1049-1064.

1372 Shah V, Ries R. A characterisation model with spatial and temporal resolution for life cycle  
1373 impact assessment of photochemical precursors in the United States. The International  
1374 Journal of Life Cycle Assessment 2009; 14: 313-327.

1375 Shimako AH, Tiruta-Barna L, Ahmadi A. Operational integration of time dependent toxicity  
1376 impact category in dynamic LCA. Science of The Total Environment 2017; 599-600: 806-  
1377 819.

1378 Shimako AH, Tiruta-Barna L, Bisinella de Faria AB, Ahmadi A, Spérandio M. Sensitivity analysis  
1379 of temporal parameters in a dynamic LCA framework. *Science of The Total Environment*  
1380 2018; 624: 1250-1262.

1381 Shimako AH, Tiruta-Barna L, Pigne Y, Benetto E, Gutierrez TN, Guiraud P, et al. Environmental  
1382 assessment of bioenergy production from microalgae based systems. *Journal of Cleaner*  
1383 *Production* 2016; 139: 51-60.

1384 Shine KP. The global warming potential—the need for an interdisciplinary retrieval. *Climatic*  
1385 *Change* 2009; 96: 467-472.

1386 Simons A, Bauer C. A life-cycle perspective on automotive fuel cells. *Applied Energy* 2015; 157:  
1387 884-896.

1388 Sohn J, Kalbar P, Goldstein B, Birkved M. Defining Temporally Dynamic Life Cycle Assessment: A  
1389 Literature Review. *Integrated Environmental Assessment and Management* 2020; n/a.

1390 Sohn JL, Kalbar PP, Banta GT, Birkved M. Life-cycle based dynamic assessment of mineral wool  
1391 insulation in a Danish residential building application. *Journal of Cleaner Production*  
1392 2017a; 142: 3243-3253.

1393 Sohn JL, Kalbar PP, Birkved M. Life cycle based dynamic assessment coupled with multiple  
1394 criteria decision analysis: A case study of determining an optimal building insulation  
1395 level. *Journal of Cleaner Production* 2017b; 162: 449-457.

1396 Standardisation ECf. Assessment of environmental performance of buildings Calculation method.  
1397 Sustainability of construction works. EN 15978, 2009.

1398 Stasinopoulos P, Compston P, Newell B, Jones HM. A system dynamics approach in LCA to  
1399 account for temporal effects—a consequential energy LCI of car body-in-whites. *The*  
1400 *International Journal of Life Cycle Assessment* 2012; 17: 199-207.

1401 Su S, Li X, Zhu Y, Lin B. Dynamic LCA framework for environmental impact assessment of  
1402 buildings. *Energy and Buildings* 2017; 149: 310-320.

1403 Tessum CW, Marshall JD, Hill JD. A Spatially and Temporally Explicit Life Cycle Inventory of Air  
1404 Pollutants from Gasoline and Ethanol in the United States. *Environmental Science &*  
1405 *Technology* 2012; 46: 11408-11417.

1406 Tiruta-Barna L, Pigne Y, Gutierrez TN, Benetto E. Framework and computational tool for the  
1407 consideration of time dependency in Life Cycle Inventory: proof of concept. *Journal of*  
1408 *Cleaner Production* 2016; 116: 198-206.

1409 Udo de Haes H, Finnveden G, Goedkoop M, Hauschild M, Hertwich E, Hofstetter P, et al. Life-cycle  
1410 impact assessment: striving towards best practice. In: (SETAC) SoETaC, editor, 2002.

1411 Vazquez-Rowe I, Marvuglia A, Flammang K, Braun C, Leopold U, Benetto E. The use of temporal  
1412 dynamics for the automatic calculation of land use impacts in LCA using R programming  
1413 environment. *International Journal of Life Cycle Assessment* 2014; 19: 500-516.

1414 Viebahn P, Lechon Y, Trieb F. The potential role of concentrated solar power (CSP) in Africa and  
1415 Europe-A dynamic assessment of technology development, cost development and life  
1416 cycle inventories until 2050. *Energy Policy* 2011; 39: 4420-4430.

1417 Vigon BW, Tolle DA, Cornaby BW, Latham HC, Harrison CL, Boguski TL, et al. LIFE-CYCLE  
1418 ASSESSMENT: INVENTORY GUIDELINES AND PRINCIPLES. In: EPA, editor. EPA,  
1419 Cincinnati, Ohio, US, 1993.

1420 Vogtländer JG, van der Velden NM, van der Lugt P. Carbon sequestration in LCA, a proposal for a  
1421 new approach based on the global carbon cycle; cases on wood and on bamboo. *The*  
1422 *International Journal of Life Cycle Assessment* 2014; 19: 13-23.

1423 Vuarnoz D, Cozza S, Jusselme T, Magnin G, Schafer T, Couty P, et al. Integrating hourly life-cycle  
1424 energy and carbon emissions of energy supply in buildings. *Sustainable Cities and*  
1425 *Society* 2018; 43: 305-316.

1426 Vuarnoz D, Jusselme T. Temporal variations in the primary energy use and greenhouse gas  
1427 emissions of electricity provided by the Swiss grid. *Energy* 2018; 161: 573-582.

1428 Walker SB, Fowler M, Ahmadi L. Comparative life cycle assessment of power-to-gas generation  
1429 of hydrogen with a dynamic emissions factor for fuel cell vehicles. *Journal of Energy*  
1430 *Storage* 2015; 4: 62-73.

1431 Walzberg J, Dandres T, Merveille N, Cheriet M, Samson R. Accounting for fluctuating demand in  
1432 the life cycle assessments of residential electricity consumption and demand-side  
1433 management strategies. *Journal of Cleaner Production* 2019a; 240: 118251.

1434 Walzberg J, Dandres T, Merveille N, Cheriet M, Samson R. Assessing behavioural change with  
1435 agent-based life cycle assessment: Application to smart homes. *Renewable and  
1436 Sustainable Energy Reviews* 2019b; 111: 365-376.

1437 Weidema B, Bauer C, Hirschier R, Mutel C, Nemecek T, Reinhard J, et al. Overview and  
1438 methodology. Data quality guideline for the ecoinvent database version 3. In: ecoinvent,  
1439 editor. *Ecoinvent Report*. The ecoinvent Centre, St. Gallen: The ecoinvent Centre, 2012,  
1440 pp. 166.

1441 Weidema BP, Schmidt J, Fantke P, Pauliuk S. On the boundary between economy and  
1442 environment in life cycle assessment. *The International Journal of Life Cycle Assessment*  
1443 2018; 23: 1839-1846.

1444 Wernet G, Bauer C, Steubing B, Reinhard J, Moreno-Ruiz E, Weidema B. The ecoinvent database  
1445 version 3 (part I): overview and methodology. *The International Journal of Life Cycle  
1446 Assessment* 2016; 21: 1218-1230.

1447 Woo C, Chung Y, Chun D, Seo H, Hong S. The static and dynamic environmental efficiency of  
1448 renewable energy: A Malmquist index analysis of OECD countries. *Renewable &  
1449 Sustainable Energy Reviews* 2015; 47: 367-376.

1450 Yang J, Chen B. Global warming impact assessment of a crop residue gasification project—A  
1451 dynamic LCA perspective. *Applied Energy* 2014; 122: 269-279.

1452 Yang Y, Suh S. Changes in environmental impacts of major crops in the US. *Environmental  
1453 Research Letters* 2015; 10.

1454 Yu B, Sun Y, Tian X. Capturing time effect of pavement carbon footprint estimation in the life  
1455 cycle. *Journal of Cleaner Production* 2018; 171: 877-883.

1456 Yuan C, Dornfeld D. Embedded Temporal Difference in Life Cycle Assessment: Case Study on VW  
1457 Golf A4 Car. In: IEEE, editor. *IEEE International Symposium on Sustainable Systems and  
1458 Technology*, Phoenix, Arizona, US, 2009.

1459 Yuan C, Wang ED, Zhai Q, Yang F. Temporal discounting in life cycle assessment: A critical review  
1460 and theoretical framework. *Environmental Impact Assessment Review* 2015; 51: 23-31.

1461 Zaimes GG, Vora N, Chopra SS, Landis AE, Khanna V. Design of Sustainable Biofuel Processes and  
1462 Supply Chains: Challenges and Opportunities. *Processes* 2015; 3: 634-663.

1463 Zhai P, Williams ED. Dynamic Hybrid Life Cycle Assessment of Energy and Carbon of  
1464 Multicrystalline Silicon Photovoltaic Systems. *Environmental Science & Technology*  
1465 2010; 44: 7950-7955.

1466 Zhai Q, Crowley B, Yuan C, Ieee. Temporal Discounting for Life Cycle Assessment: Differences  
1467 between Environmental Discounting and Economic Discounting. 2011 Ieee International  
1468 Symposium on Sustainable Systems and Technology (Issst) 2011.

1469