



HAL
open science

Addressing temporal considerations in life cycle assessment

Didier Beloin-Saint-Pierre, Ariane Albers, Arnaud Hélias, Ligia Tiruta-Barna,
Peter Fantke, Annie Levasseur, Enrico Benetto, Anthony Benoist, Pierre
Collet

► **To cite this version:**

Didier Beloin-Saint-Pierre, Ariane Albers, Arnaud Hélias, Ligia Tiruta-Barna, Peter Fantke, et al..
Addressing temporal considerations in life cycle assessment. *Science of the Total Environment*, 2020,
743, pp.140700. 10.1016/j.scitotenv.2020.140700 . hal-02894987v2

HAL Id: hal-02894987

<https://ifp.hal.science/hal-02894987v2>

Submitted on 15 Sep 2020

HAL is a multi-disciplinary open access archive for the deposit and dissemination of scientific research documents, whether they are published or not. The documents may come from teaching and research institutions in France or abroad, or from public or private research centers.

L'archive ouverte pluridisciplinaire **HAL**, est destinée au dépôt et à la diffusion de documents scientifiques de niveau recherche, publiés ou non, émanant des établissements d'enseignement et de recherche français ou étrangers, des laboratoires publics ou privés.



Distributed under a Creative Commons Attribution 4.0 International License



Review

Addressing temporal considerations in life cycle assessment



Didier Beloin-Saint-Pierre ^{a,*}, Ariane Albers ^b, Arnaud Hélias ^c, Ligia Tiruta-Barna ^d, Peter Fantke ^e, Annie Lévasseur ^f, Enrico Benetto ^g, Anthony Benoist ^h, Pierre Collet ^b

^a Empa Materials Science and Technology, Lerchenfeldstrasse 5, CH-9014 St. Gallen, Switzerland

^b IFP Energies Nouvelles, 1 et 4 Avenue de Bois-Préau, 92852 Rueil-Malmaison, France

^c ITAP, Irstea, Montpellier SupAgro, Univ Montpellier, ELSA Research Group, Montpellier, France

^d TBI, Université de Toulouse, CNRS, INRAE, INSA, Toulouse, France

^e Quantitative Sustainability Assessment, Department of Technology, Management and Economics, Technical University of Denmark, Kgs. Lyngby, Denmark

^f École de technologie supérieure, Construction Engineering Department, 1100 Notre-Dame West, Montréal, Québec, Canada

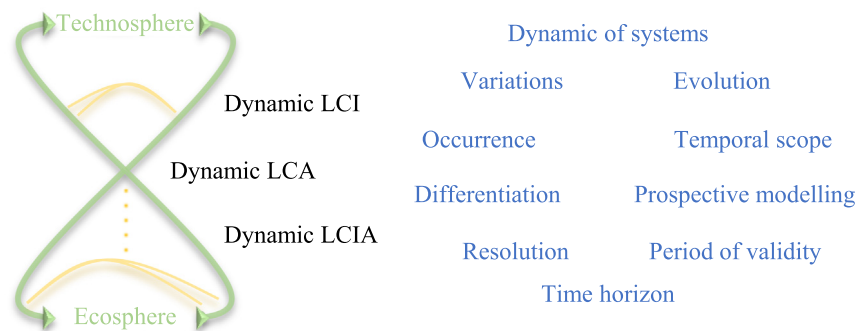
^g Environmental Sustainability Assessment and Circularity Unit, Department of Environmental Research and Innovation, Luxembourg Institute of Science and Technology, Esch/Alzette, Luxembourg

^h CIRAD, UPR BioWooEB, F-34398 Montpellier, France

HIGHLIGHTS

- Review of temporal considerations in the life cycle assessment methodology
- Glossary of important terms for time considerations in life cycle assessment
- Key aspects of dynamic life cycle assessments
- Current implementation challenges for dynamic life cycle assessment
- Development pathways for future dynamic life cycle assessment

GRAPHICAL ABSTRACT



ARTICLE INFO

Article history:

Received 18 February 2020

Received in revised form 5 June 2020

Accepted 1 July 2020

Available online 9 July 2020

Editor: Deyi Hou

Keywords:

Dynamic LCA

Temporal considerations

Review

Recommendations

Implementation challenges

ABSTRACT

In life cycle assessment (LCA), temporal considerations are usually lost during the life cycle inventory calculation, resulting in an aggregated “snapshot” of potential impacts. Disregarding such temporal considerations has previously been underlined as an important source of uncertainty, but a growing number of approaches have been developed to tackle this issue. Nevertheless, their adoption by LCA practitioners is still uncommon, which raises concerns about the representativeness of current LCA results. Furthermore, a lack of consistency can be observed in the used terms for discussions on temporal considerations. The purpose of this review is thus to search for common ground and to identify the current implementation challenges while also proposing development pathways.

This paper introduces a glossary of the most frequently used terms related to temporal considerations in LCA to build a common understanding of key concepts and to facilitate discussions. A review is also performed on current solutions for temporal considerations in different LCA phases (goal and scope definition, life cycle inventory analysis and life cycle impact assessment), analysing each temporal consideration for its relevant conceptual developments in LCA and its level of operationalisation.

We then present a potential stepwise approach and development pathways to address the current challenges of implementation for dynamic LCA (DLCA). Three key focal areas for integrating temporal considerations within the LCA framework are discussed: i) define the temporal scope over which temporal distributions of emissions

* Corresponding author.

E-mail address: dib@empa.ch (D. Beloin-Saint-Pierre).

are occurring, ii) use calendar-specific information to model systems and associated impacts, and iii) select the appropriate level of temporal resolution to describe the variations of flows and characterisation factors. Addressing more temporal considerations within a DLCA framework is expected to reduce uncertainties and increase the representativeness of results, but possible trade-offs between additional data collection efforts and the increased value of results from DLCA should be kept in mind.

© 2020 The Authors. Published by Elsevier B.V. This is an open access article under the CC BY license (<http://creativecommons.org/licenses/by/4.0/>).

Contents

1.	Introduction	2
2.	Proposed glossary	3
3.	Temporal considerations for different purposes	3
3.1.	Phase of goal and scope definition	4
3.1.1.	Modelling choices	4
3.1.2.	Data quality requirements (DQR)	4
3.1.3.	Chosen limits of assessment	6
3.2.	Phase of inventory analysis: system modelling.	7
3.2.1.	Inherent variations with flow differentiation	7
3.2.2.	Temporal resolution	7
3.2.3.	Modelling evolutions with process differentiation	7
3.2.4.	Prospective modelling	7
3.3.	Phase of inventory analysis: LCI computation	8
3.3.1.	Computational framework	8
3.3.2.	Approaches and tools	8
3.4.	Phase of life cycle impact assessment	9
3.4.1.	Modelling choices	9
3.4.2.	Chosen limits of assessment	10
3.4.3.	Temporal indicator	10
3.4.4.	Inherent variations	10
3.4.5.	Temporal resolution	10
3.4.6.	Modelling evolutions	11
3.4.7.	Strategies for prospective modelling	11
3.4.8.	Computational framework	11
3.4.9.	Approach and tools	11
4.	Proposed development pathways	11
4.1.	Stepwise approach for temporal considerations with current knowledge	12
4.2.	Temporal considerations in the goal and scope definition	12
4.3.	Time dependent modelling of human activities	12
4.4.	Inventory calculation: keeping time in the LCI	14
4.5.	Dynamics of impact assessment	14
4.6.	Summary of potential development paths for temporal considerations in DLCA	15
5.	Conclusions	15
	Declaration of competing interest	16
	Acknowledgements	16
	References	16

1. Introduction

Disregarding temporal considerations¹ has been identified as an inherent limitations of life cycle assessment (LCA) (ISO14040, 2006; ISO14044, 2006). Indeed, the importance of properly considering the dynamics of environmental sustainability for the comparison of products, services or systems has been explored, debated and confirmed during the last 20 years by many researchers like Owens (1997a), Herrchen (1998), Reap et al. (2008a, 2008b), Finnveden et al. (2009), Levasseur et al. (2010) and McManus and Taylor (2015), to name a few. In this discussion, Rebitzer et al. (2004), Reap et al. (2008a) and Yuan et al. (2015) have mainly explored the subject of dynamics in human activities. During the same period, Reap et al. (2008b), Shah and Ries (2009), Fantke et al. (2012), Kendall (2012), Levasseur et al.

(2012b) and Manneh et al. (2012) have proposed different ideas on the dynamics of environmental responses to human pressures. Additionally, Hellweg et al. (2003b, 2005), Hellweg and Milà i Canals (2014), Levasseur et al. (2013), Saez de Bikuña et al. (2018) and Yu et al. (2018) have underlined different potential effects from the choice of temporal boundaries in LCA studies. These three general subjects have covered the bulk of the conversation on temporal considerations in the LCA framework and a growing awareness of the LCA community on this topic is shown in Fig. 1² with a growth in the number of publications where some aspects are addressed.

¹ Consideration encompass all aspects relating to the description of time and dynamics of systems (see glossary in Table 1).

² The annual number of publications were found with the advance search function on web of science. The following words and conditions were searched for in the topic section: ("life cycle assessment" AND temporal) + ("life cycle assessment" AND "time horizon") + ("life cycle assessment" AND dynamic). The word "time" was not part of the search to avoid mentions of the time required for data gathering activity and because it can be part of words like "sometimes". The search was made on the 17 of December 2019.

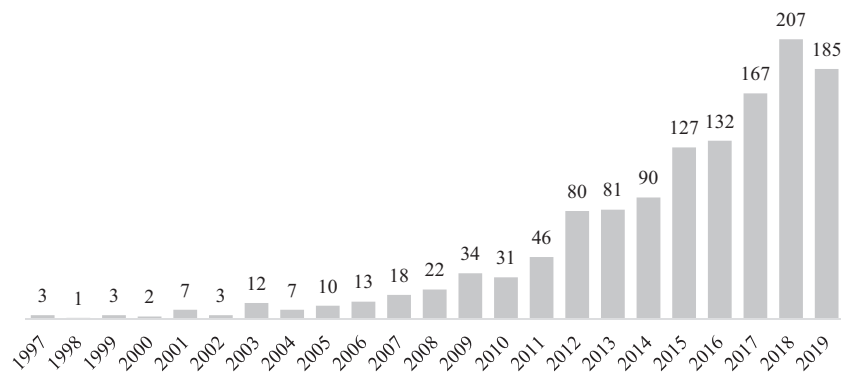


Fig. 1. Numbers of LCA publications per year where temporal considerations are discussed.

Within the identified 1281 publications, 53 review papers present several discussions about temporal considerations in different sectors (e.g. agriculture, building and energy) or in the general LCA framework. Very recently, [Sohn et al. \(2020\)](#) and [Lueddeckens et al. \(2020\)](#) have proposed reviews on aspects or issues that are connected to the approach of dynamic LCA (DLCA). In [Sohn et al. \(2020\)](#), three types of dynamism have been defined: dynamic process inventory, dynamic system inventory and dynamic characterisation, thus focusing on the concern of changes in human activities and environmental responses with many implementation examples. [Lueddeckens et al. \(2020\)](#) have offered a clearly structured analysis of 60 documents that have been published until the end of 2018 where interdependencies are underlined and solutions from the literature are identified for six types of temporal issues (i.e. time horizon, temporal weighting/discounting, temporal resolution of the inventory, time-dependent characterisation, dynamic weighting and time-dependent normalisation). While comprehensive for these six issues, the work of [Lueddeckens et al. \(2020\)](#) does not offer a detailed discussion on questions like computation, uncertainty and variability for the DLCA approach.

When looking at the abundant literature on the subject of temporal considerations in LCA, it rapidly becomes clear that the vocabulary in recent and older reviews varies considerably for common aspects such as the temporal scope or time horizon. We believe that this lack of consistency in terminology is hindering a clear discussion on the subject and therefore the development of new propositions that can be accepted by a majority of researchers. Furthermore, while many ideas, concepts, approaches and tools have been suggested by researchers and are now used in publications under the term DLCA, their widespread implementation by practitioners is still far from reached. This lack of temporal considerations in most LCA studies is worrisome since it was shown that such aspects may have significant effects on LCA results mainly in the sectors of buildings ([Collinge et al., 2018](#); [Negishi et al., 2019](#); [Roux et al., 2016b](#)) and energy ([Amor et al., 2014](#); [Beloin-Saint-Pierre et al., 2017](#); [Menten et al., 2015](#); [Pehnt, 2006](#)). It thus seems important to identify and address the current implementation challenges that prevent LCA practitioners from more frequent accounting of temporal considerations.

These challenges are tackled in the following sections. First, a glossary in [Section 2](#) proposes definitions for terms related to temporal considerations in LCA, which should clarify shared aspects of past discussions and help in building consensus. These terms are then used consistently in the text. [Section 3](#) follows with a review of the LCA literature that highlights current implementation challenges for a broad application of the DLCA approach. Recommendations for current implementation options and further developments are then provided in [Section 4](#).

Finding a clear structure to organise and analyse the numerous options for temporal consideration that have been discussed in the last

20 years of LCA development can be a daunting task. Previous reviews have chosen different strategies mainly based on specific sectors, themes or issues. These schemes have often limited the scope of the analysis or the identification of connections between ideas. We therefore chose another perspective that classifies temporal considerations based on why they are used (i.e. purposes). Indeed, from our understanding, temporal considerations are employed in LCA studies to define the temporal scope, to describe the dynamic of systems and to increase the representativeness of models. We also differentiate the temporal considerations within the standard phases of the LCA framework to provide a frame of reference that is well-known to practitioners. We thus hope to cover most options for temporal consideration in LCA with this strategy and to comprehensively address the topic for a broader implementation of DLCA studies in the future.

2. Proposed glossary

[Table 1](#) proposes key terms and definitions to discuss temporal considerations within the LCA framework. These terms are used throughout this review to ensure a consistent and non-ambiguous discussion for future developments. It is also the authors' hope that this glossary might bring some uniformity in future discussions. Concepts behind the most recently proposed definitions for types of dynamism and four subtypes of DLCA ([Sohn et al., 2020](#)) can be found in this table with a somewhat different perspective.

3. Temporal considerations for different purposes

Many temporal considerations have been described in previous publications, reports and standards to develop the general LCA framework ([ISO14040, 2006](#); [ISO14044, 2006](#); [Joint Research Center, 2010](#)) and its dynamic counterpart. For instance, [Sohn et al. \(2020\)](#) classified 56 DLCA studies by their technological domains and types of assessed dynamism. In this section, the considerations are first regrouped by their purposes. A Venn diagram in [Fig. 2](#) presents this organisation of temporal considerations where gold, purple and red rounded rectangles respectively highlight the purposes of defining the temporal scope, considering the dynamic of systems and increasing the temporal representativeness. 10 classes of temporal considerations are also presented with rectangles of different colours and linked to the phases of the LCA framework where they most commonly appear. In [Fig. 2](#), the interpretation phase is excluded because the identified temporal considerations are first accounted for in the three mentioned phases and can then be used to analyse the results.

The level of relevance, conceptual development and operationalisation for the temporal considerations of [Fig. 2](#) are qualitatively assessed with scores ranging from A (highest) to C (lowest) (detailed in [Table 2](#)) to evaluate the state-of-the-art shown in [Table 3](#). A more detailed analysis, including examples, is provided in the following subsections to clarify the

Table 1
List of proposed terms defining key temporal considerations in the LCA framework. The list is in alphabetical order so all terms from this glossary are underlined to highlight the links. Words in brackets are synonyms from the literature.

Term	Definition
Dynamic LCA (DLCA)	LCA studies where relevant <u>dynamic of systems</u> and/or <u>temporal differentiation</u> of flows are explicitly defined and considered.
Dynamic LCI (DLCI)	Life cycle inventory (LCI) that is calculated from supply and value chains where <u>dynamic of systems</u> or <u>temporal differentiation</u> is considered, resulting in temporal distributions to describe elementary flows.
Dynamic LCIA (DLCIA)	Characterisation models of environmental mechanisms that account for the dynamic of ecosphere systems and can therefore use temporal information of <u>DLICs</u> . The chosen <u>temporal differentiation</u> (e.g. day, season, and year) can depend on the impact categories. Both case specific and calendar-based characterisation models can be used, depending on the chosen indicators.
Dynamic of systems	System modelling that considers inherent variations, periods of occurrence or evolution within the temporal scope of models' components. Such a dynamic modelling can be applied to both technosphere systems (for LCI) and ecosphere systems (for LCIA).
Evolution	Changes of process, structure or state <u>models' components</u> (e.g. technology replacement, pollutant concentration in a compartment of the environment).
Inherent variations	Variations of flows in the <u>models' components</u> (e.g. cycles of solar energy production, growth rates of vegetation, seasonal functional traits, biogeochemical and biophysical dynamics). The discontinuities of flow rates are also part of such changes.
Models' components	Information structuring all models. At the technosphere level, components are elementary flows, product flows and processes. At the ecosphere level, components of LCIA models differ between impact categories. For example, components for freshwater ecotoxicity can be environmental fate, ecosystem exposure and ecotoxicological effects (Fantke et al., 2018).
Period of occurrence	The moment when a <u>model's component</u> is starting, modified or finishing over time. (e.g. lifespan of a building, beginning of waste management, start of a life cycle)
Period-specific characterisation factor (CF)	CF for a given <u>temporal scope</u> or <u>period of occurrence</u> . It results from the <u>dynamic of systems</u> in the ecosphere and can be calendar-specific, relative to the length of the <u>temporal scope</u> , or defined by a <u>TH</u> . <u>Period-specific CFs</u> are modelled as constant over the chosen period.
Period of validity	The period over which datasets, LCIs or LCIA methods are considered valid representations. This information should be calendar-based. [Time context (ILCD), time frame, range of time, period of time, time period, timespan, temporal boundary, time scale and time horizon]
Prospective modelling	A prospective LCA addresses future life cycle impacts using different modelling strategies (e.g. scenario-based, technology development curves and agent- or activity-based models). The <u>evolution of systems</u> is thus defined and/or simulated using a list of explicit assumptions regarding the future. <u>Prospective modelling</u> can be applied to both the technosphere and ecosphere and is a subset of the <u>dynamic of systems</u> , which only concerns future forecasts.
Temporal considerations	Any aspects (i.e. information) described in relation to the time dimension or <u>dynamic of systems</u> in the LCA framework. This is the overarching term relating to all other terms of the glossary. [Time-aspect in ILCD documents]
Temporal differentiation	The action of distributing the information on a time scale related to the <u>models' components</u> . For example, elementary flows could be described per day or year. Different processes representing yearly average are another example. [Temporal segmentation in ILCD]
Temporal resolution	Describes the time granulometry when <u>temporal differentiation</u> is carried out. For instance, a monthly or daily resolution can be used to describe the flows in technosphere models. The same term can be used to describe a time step for <u>period-specific CFs</u> . [Time step]
Temporal representativeness	Qualitative or quantitative assessment of data, processes or LCIA methods in relation to how appropriate their information fits with their <u>temporal scope</u> . [Time-related representativeness (ILCD), Time-related coverage (ISO14044)]
Temporal scope	Defines any type of period that is considered in a LCA study (e.g. temporal considerations along a life cycle, service life of a product, data collection period).
Temporalisation	Attribution of temporal properties to the <u>models' components</u> . (e.g. definition of <u>temporal scopes</u>)
Time horizon (TH)	Relative <u>temporal scope</u> over which environmental impacts are summed up to provide LCA results.

qualitative appraisal of Table 3. Possible temporal feedback between the LCI and LCIA are not assessed, although they may influence LCA results (Weidema et al., 2018).

3.1. Phase of goal and scope definition

In the goal and scope definition, temporal considerations can be introduced by the modelling assumptions, data quality requirements (DQRs) and model limitations. They mostly offer insights on the temporal scope in which LCA studies are representative and useful. This temporal scope also provides an indication of when the dynamic of systems should be considered.

3.1.1. Modelling choices

3.1.1.1. Definition of lifetime. The lifetime of systems or products, which frames the use phase of the life cycle, is probably the most common temporal consideration in LCA studies (Anand and Amor, 2017; Azarijafari et al., 2016; Fitzpatrick, 2016; Helin et al., 2013; Mehmeti et al., 2016). This temporal scope, which is relative to the overall life cycle, has often been used to ensure a fairer comparison (Joint Research Center, 2010; Jolliet et al., 2010). However, more comprehensive temporal information on the full life cycle, which is not mandatory in international LCA standards (ISO14040, 2006; ISO14044, 2006), would be necessary to explicitly frame the full temporal scope over which elementary flows and impacts might occur. For example, a house can be used for a lifetime of 50 years (Hoxha et al., 2016;

Standardisation, 2009), but this temporal scope does not include the phase of forest growth, which supplies wood for the fabrication of the building's components (Breton et al., 2018; Fouquet et al., 2015) or for advanced biofuels (Albers et al., 2019a).

3.1.1.2. Dynamic functional units. Some practitioners have suggested that the temporal scope should always be provided with the definition of questions (Finnveden et al., 2009; Huang et al., 2012; Ling-Chin et al., 2016) and functional units (FUs) (Inyim et al., 2016; Santero et al., 2011). The concept of dynamic FUs has been proposed (Kim et al., 2017), which could consider the evolution and comparability of products and would explicitly define the period of validity for a LCA study when the behaviour of consumers and markets have changed significantly. For example, the rapid evolution of technologies for mobile phones has changed their functionalities and demand thus modifying their global production volumes.

3.1.2. Data quality requirements (DQR)

3.1.2.1. Age of data. Some metadata of datasets, which should be defined in the DQR (ISO14044, 2006; Joint Research Center, 2010), informs on their age and minimum length of time for data collection. Potential temporal discrepancies between used datasets and the targeted temporal scope of a modelled system can thus be partially evaluated. Such information also provides some insights on the temporal scope of a system model when it represents human activities (Bessou et al., 2013; Yuan et al., 2015). For example, the description of solar energy

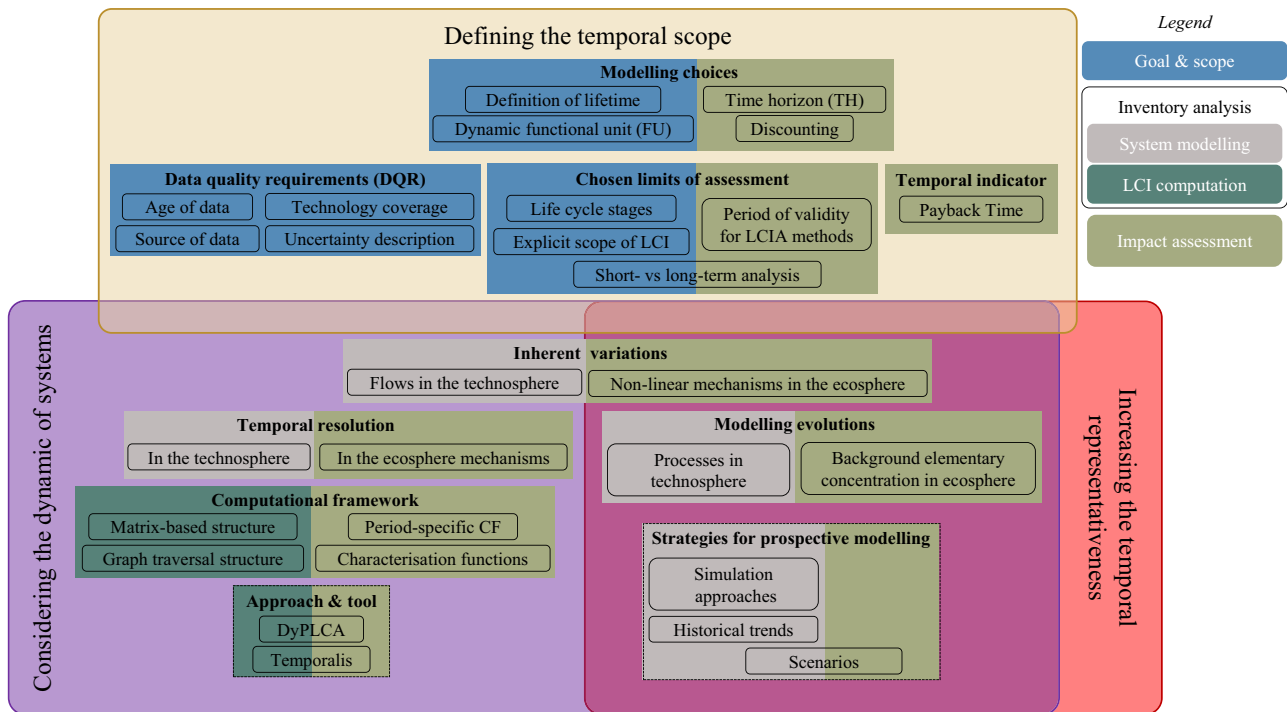


Fig. 2. Venn diagram of temporal considerations in relation to their purposes (grey rectangles), the phases of the LCA methodology (coloured rectangles) and 10 classes (Bold titles). Existing connections are presented by arrows.

installations from the 1990s would probably be relevant for LCA of solar energy before 2000. Nevertheless, using such periods of validity require expert opinion, thus limiting the usefulness for this kind of metadata.

3.1.2.2. Technology coverage. In some cases, the definition of technology coverage in the DQR of datasets can inform on the actual temporal scope of the study (ISO14040, 2006; ISO14044, 2006; Joint Research Center, 2010) with the ensuing qualitative assessment of temporal representativeness. For example, ecoinvent (Wernet et al., 2016) uses five levels of technology (i.e. new, modern, current, old and outdated) to describe transforming activities. Using datasets with new or modern technology levels should therefore be relevant for LCA studies on future products. However, this information is relative to each sector, as the modern level could be representative for 10 years of technology evolution in an established sector, whereas fast-paced sectors like electronics may use modern technologies for only 1 year before switching to new options.

3.1.2.3. Source of data. The choice of data sources and the qualitative assessment of their overall representativeness provide an indirect assessment of the temporal scope for modelled systems and LCA studies (Rebitzer et al., 2004). For example, when data are sourced from scientific journals, date of publication is the primary indication for its period of validity. More precise temporal information is also often provided in case studies for systems with longer lifetimes or in DLCA studies like

(Heeren et al., 2013; Pahari et al., 2015; Sohn et al., 2017a; Vuaroz et al., 2018). The use of up-to-date LCA databases can bring a false sense of security on the temporal scope and representativeness of the data for recent products or systems. Indeed, database updates do not always follow the changes in market shares or evolution of technology because of the lack of new data.

Nevertheless, different temporal metadata is given for most datasets. For instance, ecoinvent guidelines (Wernet et al., 2016) require the definition of the date of generation, the date of review and the period of validity with a start date and end date for any dataset. These temporal considerations fulfil most of the requirements from ISO 14044 (2006) except for the definition of the averaging period of dataset inputs. The ILCD handbook (2010) has set further requirements defining temporal properties: the expiring year of datasets and the duration of the life cycle, which respectively relates to the period of validity for LCI datasets and the temporal scope of elementary flows for a dataset. This metadata is available in most datasets of the ELCD (Recchioni et al., 2013). Many of these temporal metadata are more relevant to assess the temporal scopes of studies than the choice of a database and its version, but the place (e.g. in dataset descriptions) and the different definition under which they can be found hinder their use in most LCA studies.

3.1.2.4. Uncertainty description. The description of the uncertainty associated with flows (e.g. in ecoinvent (Wernet et al., 2016)) is another indirect source of information to clarify the temporal scope

Table 2
Meaning of different scores for the qualitative assessment of temporal considerations in LCA.

Ranking categories	A	B	C
Relevance	Demonstrated at least in some LCA studies	Expected by authors of this article	Unknown
Conceptual development	A standard method is accepted by the LCA community	At least one method for consideration has been proposed	Theory or concepts have been explained
Operationalisation	Available in the data of most LCA studies when relevant	Some examples have been published	Not found in the literature

Table 3
List of temporal considerations in the LCA framework. Rankings for relevance, conceptual development and operationalisation are provided for each consideration on a scale from A to C with their colour code (see Table 2). The colour for the three columns of purpose is based on the code of Fig. 2. The numbers for the rows are the text's subsections.

Sections	Subsection	Temporal considerations	Defining temporal scope	Considering dynamics of systems	Increasing temporal representativeness	Relevance	Conceptual development	Operationalisation	
3.1 Phase of goal and scope definition	3.1.1 Modelling choices	Definition of lifetime	X			A	A	A	
		Dynamic FU	X			A	B	B	
	3.1.2 Data quality requirements (DQRs)	Age of data	X			A	A	B	
		Technology coverage	X			A	B	B	
		Source of data	X			A	C	A	
		Uncertainty description	X			A	B	B	
	3.1.3 Limits of assessment	Considered life cycle stages	X			A	A	A	
		Temporal scope of LCI	X			A	B	B	
		Short- vs long-term	X			A	C	B	
3.2 Phase of inventory analysis: System modelling	3.2.1 Inherent variations	Flows in technosphere		X		A	B	B	
	3.2.2 Temporal resolution	In technosphere		X		B	B	B	
	3.2.3 Modelling evolution	Processes in technosphere		X		A	B	B	
	3.2.4 Prospective modelling	Simulation approaches			X	X	B	B	B
		Historical trends			X	X	A	B	B
		Use of scenarios			X	X	A	B	B
3.3 Phase of inventory analysis: LCI computation	3.3.1 Framework	Matrix-based		X		A	B	B	
		Graph traversal		X		A	B	B	
	3.3.2 Approach and tool	DyPLCA		X		A	B	B	
		Temporalis		X		A	B	B	
3.4 Phase of impact assessment	3.4.1 Modelling choices	Time Horizons	X			A	A	A	
		Discounting	X			C	B	C	
	3.4.2 Limits of assessment	Period of validity	X			B	B	B	
		Short- vs Long-term	X			A	C	B	
	3.4.3 Temporal indicator	Payback time	X			B	B	B	
	3.4.4 Inherent variations	Non-linear mechanisms		X	X	B	B	C	
	3.4.5 Temporal resolution	Ecosphere mechanisms		X		B	C	C	
	3.4.6 Modelling evolution	Background concentration		X	X	B	B	C	
	3.4.7 Prospective modelling	Scenarios		X	X	B	B	B	
	3.4.8 Computational framework	Period-specific CFs		X	X	B	B	B	
		Characterisation functions		X	X	C	C	C	
3.4.9 Approach and tool	DyPLCA		X		A	B	B		
		Temporalis		X		A	B	B	

and period of validity. Indeed, the temporal correlation indicator provides a quantitative assessment of the discrepancy between the time when the data was acquired and the intended temporal scope for the dataset (Weidema et al., 2012). For example, a product flow with a temporal correlation indicator of 3 means that its value has been gathered between 6 and 9 years before or after the targeted temporal scope of the dataset. With the current definition of the temporal correlation indicator, the precision of this temporal information is rather low (i.e. >3-year period) and is widely missing in LCA databases and studies, limiting its applicability.

3.1.3. Chosen limits of assessment

The definition of limitations in the stage of goal and scope definition is probably the step where temporal scopes are defined with higher precision and clarity in LCA studies, even more in recent DLCA studies. While this is useful, typical LCA reports mainly offer qualitative definitions, which are not sufficiently transparent to describe the considered period in assessed life cycles.

3.1.3.1. Considered stages of the life cycle. LCA studies can limit the temporal scope of their analysed systems and LCIs by considering only a part of the life cycle. Setting the end-of-life outside the boundaries is an example of such a limited temporal scope. The ISO 14044 (2006) allows this limitation, but only if they do not significantly change the overall conclusions of a study because such phases are not linked to significant impacts. Most of the LCA reports clearly state the excluded life cycle stages, but they often provide an imprecise description for the limitation of the temporal scope. Moreover, the specification of the considered stages of a life cycle will not explicitly state the temporal scope in which elementary flows are considered (e.g. 2 years) nor offer a calendar-based period of occurrence (e.g. from January 2019 to December 2020).

3.1.3.2. Temporal scope of life cycle inventories. More specific and precise descriptions of temporal scopes for LCI have been provided in recent scientific publications that focus on some temporal considerations (i.e. DLCA). For example, relative temporal scopes have been used to define the periods of LCIs for many studies on different products, for example considering the lifetime of wood-based products and buildings between 50 and 100 years (Fouquet et al., 2015; Levasseur et al., 2010) including tree growth period over 70 and 150 years (Levasseur et al., 2013; Pinsonnault et al., 2014), lifetime of marine photovoltaic of 20–30 years (Ling-Chin et al., 2016) and zinc fertiliser over 20 years crop rotation (Lebailly et al., 2014). In these cases, the LCIs are enclosed within a quantified period of time that can be relevant for some impact categories, but they lack any reference to a calendar year or period. Several DLCA studies defined calendar-based temporal scopes, but discussions on the potential usefulness of this contextual information could be further enriched. Some were based on reference calendar years of building materials (Collinge et al., 2013b), hourly energy demand in buildings (Vuaroz et al., 2018), as well as seasonal and annual variations in crop rotations (Caffrey and Veal, 2013). Other studies were based on calendar-specific periods detailing domestic hot water production (Beloin-Saint-Pierre et al., 2017), future biomass production (Menten et al., 2015), the lifetime of buildings (Roux et al., 2016a; Roux et al., 2016b), the energy use in hourly, daily and monthly temporal resolutions (Collinge et al., 2018; Karl et al., 2019), or for introducing back-time horizon (Tiruta-Barna et al., 2016).

3.1.3.3. Short- vs long-term analysis. Several publications describe the temporal scopes of technosphere models (Dandres et al., 2012; Menten et al., 2015) or LCI (Finnveden et al., 2009; Morais and Delerue-Matos, 2010; Pettersen and Hertwich, 2008; Roder and Thornley, 2016) with adjectives such as short-, medium- or long-term. These qualitative and relative attributes thus inform the considered

periods, but are vague. This lack of a precise temporal definition can be partly explained by the lack of consensus on how temporal scopes should be defined.

3.2. Phase of inventory analysis: system modelling

In the system-modelling step of the LCI phase, temporal considerations are found in the descriptions of the system inherent variations and evolution. They define the dynamics of systems and can improve the temporal representativeness of models for technosphere activities (i.e. network of processes). Although considering system evolution and inherent variations in both the foreground and the background data is still not a common practice, its importance has long been acknowledged in ISO 14040 (2006), stating that “*all significant system variations in time should be considered to get representative results*”.

Strategies to consider inherent variations and evolution have been proposed by different authors, mainly for energy (Amor et al., 2014; Zaines et al., 2015), transport (Tessum et al., 2012), agriculture (Fernandez-Mena et al., 2016; Yang and Suh, 2015) and waste management (Bakas et al., 2015). For example, the energy share of electricity production in a country varies throughout days, weeks, months and seasons (Beloin-Saint-Pierre et al., 2019; Vuaroz and Jusselme, 2018). LCA case studies have shown that inherent temporal variations of production can have significant effects on results, mainly when consumption of these products is not constant over time.

3.2.1. Inherent variations with flow differentiation

Inherent variations can be modelled with temporal differentiation of flows or dynamic modelling. For instance, electricity production (Messagie et al., 2014; Vuaroz and Jusselme, 2018; Walker et al., 2015) and its use in buildings (Collinge et al., 2013b; Collinge et al., 2018; Karl et al., 2019; Roux et al., 2016b; Roux et al., 2017; Vuaroz et al., 2018; Walzberg et al., 2019a), cloud computing (Maurice et al., 2014) and wastewater treatment (de Faria et al., 2015) have all been modelled with such approaches. In different ways, all these approaches convert flows into temporal distributions, thus supplementing temporal properties to the core data of the model components in the LCA framework. The applicability of such data in other LCA studies is often limited because the temporal information is valid only for the temporal scope of a given case study. A way to address this limitation is to use a reference “time 0” in the temporal distribution as a period of occurrence relating to a starting period of a process (Beloin-Saint-Pierre et al., 2014; Tiruta-Barna et al., 2016). This “time mark” creates process-relative descriptions, which can be reused in any period of a life cycle or even for different life cycles. Tiruta-Barna et al. (2016) and Pigné et al. (2020) provided process-relative temporal distribution archetypes for ecoinvent v3.2, applicable to foreground and background datasets. As underlined by Beloin-Saint-Pierre et al. (2014), the additional efforts needed to provide temporal information for all the flows of LCA databases are still significant and the prioritisation of data-gathering remains important.

3.2.2. Temporal resolution

The level of temporal resolution to models the dynamics of systems depends on the sector and the modelling approach. For instance, hourly resolutions have been chosen for electricity production and consumption (Amor et al., 2014) or the transportation sector (Tessum et al., 2012). For assessing long-term emissions, for instance from waste treatment, a temporal resolution of centuries is more appropriate (Bakas et al., 2015). Some authors have proposed a temporal differentiation based on archetypes. For example, archetypal weather days (Risch et al., 2018) have been developed to contrast the relative importance of episodic wet weather versus continuous dry-weather loads. So far, studies about the consequences for choosing different temporal resolutions to describe the flows are limited. Indeed, only two examples are found in the building sector where a monthly resolution is deemed

sufficient to consider most of the temporal variability (Beloin-Saint-Pierre et al., 2019; Karl et al., 2019).

3.2.3. Modelling evolutions with process differentiation

The basic strategy to describe evolution is to differentiate processes when a system is considered to change substantially over time. The key challenge here is to identifying when changes are significant enough without expert opinion on the modelled product. A simple application can be performed, if calendar-based periods of validity are consistently provided for all datasets in LCA databases; they could then be changed automatically when they are no longer valid representations over the full life cycle of any system. Such metadata is, however, required only in the (discontinued) ELCD database (see subsection 0) and, currently cannot be easily integrated in LCA software.

Collet et al. (2011) proposed an approach to tackle this problem and identify where temporal differentiation of processes during system modelling is needed. Their general idea is to recognise when the combined emission and impact dynamics justify the additional effort for temporal differentiation. Moreover, the selective introduction of the time dimension in background processes has been studied by Pinsonnault et al. (2014) and more recently by Pigné et al. (2020). The authors have shown that the temporal variations of a selection of background processes and the entire ecoinvent database can significantly affect climate change impacts for processes in some sectors (e.g. transport and building).

3.2.4. Prospective modelling

Modelling future evolution of systems is another common example of temporal considerations that is often performed under the umbrella of DLCA studies. Indeed, many DLCA studies have explored different prospective models for a range of products like: photovoltaic panels (Pehnt, 2006; Zhai and Williams, 2010), buildings (Collinge et al., 2013a; Frijia et al., 2012; Scheuer et al., 2003; Sohn et al., 2017a; Sohn et al., 2017b; Su et al., 2017), bioethanol (Pawelzik et al., 2013), passenger vehicles (Bauer et al., 2015; Miotti et al., 2017; Simons and Bauer, 2015), metals (Stasinopoulos et al., 2012) or ammonia (Mendivil et al., 2006). Any temporal assumptions made to define future evolution are thus considered for system modelling and LCI calculations. While major advances have been reached to offer explicit descriptions of assumptions made for temporal considerations in DLCA, e.g. (Collinge et al., 2013b; Herfray and Peuportier, 2012; Menten et al., 2015; Pehnt, 2006; Roux et al., 2016b), they are currently not the standard. Prospective modelling assumptions can be grouped within three categories that have fundamental differences on how they justify their forecasting.

3.2.4.1. Simulation approaches. Economic models, such as partial equilibrium models (PEM) or general equilibrium models (GEM), are frequently used in, but not limited to, consequential LCA modelling to simulate potential future evolution to assess direct and indirect consequences of decisions (e.g. climate policies) on large scale systems. Nevertheless, the current focus of using these models to assess consequences of changes in LCA studies should not hide their potential to offer possible development paths in prospective assessments. PEM generally focuses on one particular economic sector with a higher level of detail (i.e. technology rich), while GEM covers the whole economy with a lower level of detail (typically 30–50 economic sectors). For instance, PEMs have been used to model the energy sector in France (Albers et al., 2019c; Menten et al., 2015), or biogas production in Luxembourg (Marvuglia et al., 2013) and GEMs have been used to evaluate the consequences of different energy scenarios on the whole economy in Europe (Dandres et al., 2011). PEMs have also been coupled with GEMs to model the consequences of energy policy scenarios in an integrated manner (Igos et al., 2015) and they have been used in combination with dynamic models of biogenic and soil organic carbon for a similar purpose (Albers et al., 2020; Albers et al., 2019b).

The lack of consideration for human behaviour in PEM or GEM has recently been pointed out as a potential issue for the validity of the prospective models (Marvuglia et al., 2015). The use of agent- or activity-based models have therefore been proposed as alternatives to carry out prospective assessments; both in the foreground and in the background systems. Such models have mostly been used in consequential LCAs relating with transport policies (Querini and Benetto, 2015), regional market penetration of electric vehicles (Noori and Tatari, 2016), switch grass-based bioenergy systems (Miller et al., 2013), smart buildings (Walzberg et al., 2019b) or raw materials criticality (Knoeri et al., 2013), but could be used to predict future trends. The differences between the use of such simulation approaches in DLCA or consequential LCA studies have been discussed recently by Sohn et al. (2020).

3.2.4.2. Forecasting based on historic trends. Some data sources (e.g. statistics on energy production) describe historic trends from which forecasting is made by extrapolation, assuming paradigm shifts will not occur. For instance, regression analysis was used to assess the evolution of energy systems (Pehnt, 2003a; Pehnt, 2003b; Pehnt, 2006; Yang and Chen, 2014) and the construction sector (Sandberg and Brattebø, 2012). The main strength of this approach is its simplicity and the potential to assess the observed level of variability of historic trends. It can thus provide averaged future trends and the expected variability (uncertainty). The main weakness, on the other hand, is the implicit assumption that historic trends are representative of the future, which is not always the case, particularly for emerging systems and technologies.

3.2.4.3. Using scenarios to explore potential futures. Scenario-based modelling has been used in many sectors like waste management (Hellweg et al., 2005), water consumption (Pfister et al., 2011), bioenergy (Choi et al., 2012; Daly et al., 2015; Dandres et al., 2012; Earles et al., 2013; Igos et al., 2014; Menten et al., 2015), renewable electricity (Hertwich et al., 2015; Pehnt, 2006; Viebahn et al., 2011), transport (Cheah and IEEE, 2009; Garcia et al., 2015; Pehnt, 2003a; Pehnt, 2003b), chemicals (Alvarez-Gaitan et al., 2014) and buildings (Roux et al., 2016b). A general idea behind modelling scenarios is that exploring many potential futures may be simpler to justify than offering predictions on what the future will look like for a system as complex as human activities. For instance, Pesonen et al. (2000) defined that the scenarios describe possible future situations based on assumptions about the future and include developments from the present to the future. The authors distinguished between “what-if” and “cornerstone” scenarios (Pesonen et al., 2000), depending on the need to consider short- or long-term planning. “What-if” scenarios are often based on the field-specific expertise of LCA practitioners. Cornerstone scenarios explore many options with very different assumptions on the future to identify potential development paths. Another category is legally bound scenarios that explore future paths under the restriction of regulations.

3.3. Phase of inventory analysis: LCI computation

The computation of LCI transforms the information of a technosphere model into a set of elementary flows whose quantities are in relation to the FU of the assessed systems. The computation traditionally aggregates all flows of the same type over the entire life cycle.

3.3.1. Computational framework

3.3.1.1. Matrix-based computation with process differentiation. The conventional matrix-based computational approach can be used to calculate DLICs, but with larger technosphere and ecosphere matrixes (Heijungs and Suh, 2002). Collinge et al. (2012, 2013b) used this approach on foreground processes to calculate the DLCI for each year of a building's life cycle. They concluded, similarly to Heijungs and Suh (2002), that the implementation brings significant challenges in data

management when background databases are used. The challenges of this approach are twofold. Firstly, the temporal description of a system needs to be re-informed when the periods of assessment differ (e.g. 1980–2000 vs 2005–2025), if considered impacts are calendar-based. Secondly, the amount of data and the computational efforts depend on the required temporal precision (e.g. day vs. year) to describing all flows.

3.3.1.2. Graph traversal structure. The Enhanced Structure Path Analysis (ESPA) approach (Beloin-Saint-Pierre et al., 2014) is one type of graph-based computational framework that convolves process-relative temporal distributions (see Section 3.2.1) to propagate the temporal descriptions of flows. The general concept behind the ESPA framework (Beloin-Saint-Pierre et al., 2014; Maier et al., 2017) relates to one strategy of graph traversal algorithms (i.e. breadth-first), but other options have been explored. The depth-first search strategy (Tirutabarna et al., 2016) recommends a different traversal of supply chains, which is normally linked to lower memory requirements. The best-first search strategy (Cardellini et al., 2018) is another option that propagates the temporal information by prioritising the temporal distribution with higher contributions to impacts. All these options use process-relative temporal distributions, thus profiting from their reusability and the potential for higher temporal precision.

3.3.2. Approaches and tools

Some commercial software tools use matrix-based computation (e.g. Simapro, Umberto) and could thus work with the process differentiation framework for the calculation of temporally differentiated LCI. To our knowledge, this option has not been implemented comprehensively in DLCA studies because LCA databases do not offer temporal details. The ESPA method has also not been developed into a computational tool and its implementation has been limited to one simplified case study (Beloin-Saint-Pierre et al., 2017). Nevertheless, two options currently exist for full DLCI computations and are introduced in the following sub-sections.

3.3.2.1. DyPLCA. DyPLCA has been implemented as a web tool (available at <http://dypclca.univ-lehavre.fr/>), originally presented by Tiruta-Barna et al. (2016), which uses the depth-first graph search strategy. The main parameters that balance accuracy vs. computation time in this tool are the temporal resolution of function integrals and the back time span. Common values for both are respectively 1 day and –50 years (i.e. 50 years before the period of occurrence for the FU). The computational intensity of the DLCI calculation has thus been resolved by a trade-off between accuracy and cut-offs. The process-relative temporal distributions can have different levels of detail to describe the flows in the system models. For instance, they can be detailed for foreground processes, as presented in Shimako et al. (2018), and can be rather generic for the background datasets.

DyPLCA currently works with a temporal differentiated ecoinvent v3.2 (Pigné et al., 2020), providing generic temporal descriptions to most background inventory processes. The DLCI results can be further used with static or DLCA methods, as shown in studies on bioenergy production from microalgae (Shimako et al., 2016) and on grape production (Shimako et al., 2017).

3.3.2.2. Temporalis. Temporalis (Cardellini et al., 2018) is a free and open source package of the Brightway2 LCA tool (Mutel, 2017), using the best-first search strategy. The tool is fully compatible with many existing commercial LCA databases, but temporal descriptions of datasets are currently not provided. Temporalis does not require a fixed and continuous temporal resolution over any system models to provide DLCI or results for the impact assessment. Nevertheless, a DLCA method for GWP based on the IPCC methodology (2013), is included. A simple case study for the temporal consideration of biogenic carbon flows was carried out with the

method of Cherubini et al. (2011, 2012). It has shown that the LCI computation can be resolved on a regular laptop within a short time. Nevertheless, further developments still need to be completed before most LCA practitioners can use the tool easily.

3.4. Phase of life cycle impact assessment

In the LCIA phase, temporal considerations affect many aspects that are linked to all phases of the LCA framework. For instance, the selection of a TH and changes of environmental mechanisms (i.e. impact pathways) over time are key modelling choices to characterise impacts in a DLCA framework.

3.4.1. Modelling choices

LCIA is a complex task that requires many assumptions (e.g. the future state of the environment) and choices, which sometimes limit the validity of results to a specific temporal scope and introduce bias in the results. One of the most explicit and commonly used temporal considerations in LCIA methods is the TH, restricting the impact assessment to a specific period. Discounting is another modelling choices that can affect LCA results in similar ways to TH with links to its potential subjectivity (Lueddeckens et al., 2020).

3.4.1.1. Time horizon. The choice between a finite or infinite TH is a common type of temporal consideration that sums the environmental effects over a selected temporal scope (e.g. the 100-year TH for the GWP indicator). The consideration of different THs is used, for instance, by the ReCiPe method (Huijbregts et al., 2016), which builds on three cultural perspectives, proposed by Hofstetter et al. (2000). These perspectives are associated with different sets of calculation assumptions, including CFs with different THs for each impact category. For example, the “hierarchist” perspective retains a 100-year TH for GWP and other categories, while “individualist” and “egalitarian” perspectives respectively use THs of 20 and 1000 years. Furthermore, very long THs are suggested for some impact categories such as for climate change (i.e. 1000 years) and ionising radiation (i.e. 100,000 years). The ILCD handbook (2011) and the SimaPro Database Manual (PRé, 2016) provide additional insights into the use of THs in different LCIA methods, but there is not yet any standard on how to deal with long-term impacts and related uncertainties within all categories. For instance, the 5th IPCC assessment report (2014) removed the 500-year TH due to high uncertainties associated with the assumption of constant background concentrations.

To date, the choice of a TH remains a topic of discussion within the LCA community (Dyckhoff and Kasah, 2014; Reap et al., 2008b) where three critical aspects are challenging the use of fixed and finite THs in LCIA methods:

- The first aspect is the inconsistency between the temporal boundaries of the studied systems and the TH of the LCIA methods (Benoist, 2009; Levasseur et al., 2010; Rosenbaum et al., 2015; Yang and Chen, 2014). Indeed, it could be understood that effects from elementary flows beyond the chosen TH should not be considered. However, the effects are ultimately modelled over an invariable temporal scope, even if they occur at different periods during a life cycle (e.g. 100 years). This use of THs may thus lead to misrepresentations of impacts and their period of occurrence (Hellweg and Frischknecht, 2004), for instance, misleading decision-making concerning temporary storage and emission delays (Brandao and Levasseur, 2011; Jørgensen et al., 2015). This issue can be particularly significant for intermitting emissions like pesticides, where arbitrary cut-offs of emissions after pesticide application should influence how each emission contributes to related impacts of human toxicity (Fantke and Jolliet, 2016) and ecotoxicity (Peña et al., 2019).
- The second aspect refers to the time integration of substances with highly variable environmental effects over their lifetime in the

ecosphere (e.g. aging effects reducing bioavailability of metals (Owsianiak et al., 2015) or transformation of persistent chemicals in the environment (Holmquist et al., 2020)), which can significantly bias the conclusions of LCA studies (Arodudu et al., 2017; Lebailly et al., 2014). In the case of GWP, the weight of forcers with very short atmospheric residence time decreases with an increasing TH (Levasseur et al., 2016; O'Hare et al., 2009), while a shorter TH increases the importance of short-lived gases. For example, methane (CH₄), whose atmospheric lifetime is about 12.4 years, goes from a factor of 84 CO₂-eq for the 20-year TH to a factor of 28 CO₂-eq for 100-year TH (Myhre et al., 2013). For further examples on this subject, Levasseur et al. (2016) presented various approaches that have been proposed for TH definition. For toxic substances, Huijbregts et al. (2001) demonstrated that TH variations can change impacts by up to 6.5 orders of magnitude for metal toxicity. In this case, the high dependency between CFs and the chosen TH is due to long residence times (i.e. persistence) in fate models, which increase metal run-offs and leaching potential to global marine and soil compartments.

- The third aspect relates to the temporal cut-offs that come with the selection of a fixed and finite THs, which can be ethically questioned in the context of intergenerational equity (Hellweg et al., 2003a). Indeed, these cut-offs raise concerns on the subjectivity of choosing a specific TH to highlight preferences between short- and long-term impact considerations (Lueddeckens et al., 2020). For instance, the 100-year TH in GWP is the most used and recommended option, but this preference is not justified by scientific facts (Reap et al., 2008b; Shine, 2009; Vogtländer et al., 2014) and is implicitly subjective for decision-making (Brandao and Levasseur, 2011; Fearnside, 2002). This 100-year TH is particularly important when temporary/permanent carbon storage or the delayed emissions from biogenic and fossil sources are evaluated or incentivised (Guest and Stromman, 2014; Levasseur et al., 2012a). Moreover, emissions that are delayed after the 100-year scope are then considered to be permanently avoided (BSI, 2011; Joint Research Center, 2011).

A “simple” solution to remove such time preferences and value choices has been recommended by setting infinite THs in all cases. For instance, some LCIA methods (e.g. EDIP2003 (Hauschild et al., 2006), IMPACT 2002+ (Jolliet et al., 2003), ReCiPe 2016 (Huijbregts et al., 2016)) use infinite or indefinite THs as a standard for stratospheric ozone depletion, human toxicity and ecotoxicity. In the case of the land use impact category, THs are generally not explicitly stated in current characterisation models (see e.g. Huijbregts et al. (2016) for biodiversity impacts or Müller-Wenk and Brandão (2010) for climate change). Even if the theoretical frameworks for land use impact assessment discusses changed (Beames et al., 2015) or permanent impacts and therefore the need for defining a TH (Canals et al., 2007; Koellner et al., 2013), permanent impacts are currently not considered in available characterisation models. Current models implicitly correspond to the choice of an infinite TH where impacts of each land use intervention is being integrated over time until the effect factor reaches 0, i.e. until the variations of soil quality after the land use intervention regenerates back to a reference soil quality. Regeneration time then plays a significant role in the effective integration period and in the definition of CFs.

3.4.1.2. Discounting. This concept was discussed to value time in LCIA (Hellweg et al., 2003a; Pigné et al., 2020; Yuan and Dornfeld, 2009; Zhai et al., 2011) and to deal with the uncertainties associated with time preferences and future emissions. The setting of finite THs is an implicit form of discounting for long-term impacts, using a zero discount rate over the TH, and an infinite discount rate beyond the TH. Discounting offers a trade-off between giving a higher value to present or future impacts. A more detailed discussion on this subject is provided by Lueddeckens et al. (2020).

3.4.2. Chosen limits of assessment

The periods of validity for chosen LCIA methods and discussions on the short- or long-term nature of impacts are two types of temporal considerations that can inform on the temporal scope of a LCA study, whether this selection is voluntarily made by the practitioner or not.

3.4.2.1. Period of validity for LCIA methods. Stating the period of validity (e.g. 2000 to 2010) or version for chosen LCIA methods in LCA studies is not common practice, but it can provide insights on the expected temporal scope (Bessou et al., 2011; Hauschild et al., 2013; Ling-Chin et al., 2016; Weidema et al., 2012). The choice of THs can also suggest an implicit definition of the considered period of validity. In an ideal world, the temporal scope of obtained LCIs and chosen LCIA methods should be fitted to each other. Such a correspondence is desirable if CFs vary significantly over time, but it is currently difficult to implement in the available databases and software tools.

3.4.2.2. Short- vs long-term analysis. Much like it has been said in the definition of the goal & scope (Section 3.1.3), the adjectives of short- and long-term have been used to describe the temporal scope of LCIA methods (Arodudu et al., 2017; Chowdhury et al., 2017; Reap et al., 2008b). This lack of a precise temporal definition when stating short-, medium- and long-term can be partly explained by the differences in time scales of life cycles and environmental impacts for different systems. Furthermore, a commonly accepted standard does not yet exist to deal with long-term impacts and related uncertainties within all categories. For instance, the 5th IPCC assessment report (Myhre et al., 2013) removed the previously published 500-year TH due to the high uncertainties associated with the assumption of constant background concentrations.

3.4.3. Temporal indicator

3.4.3.1. Payback time. Payback times have been created to provide a temporal scope that informs on temporality of impacts. The basic idea is to calculate the necessary period to compensate for the “cradle-to-gate” impacts of any system. It has been mostly used to evaluate the time it takes to produce an amount of electricity that is equivalent to the primary energy use from the manufacturing of photovoltaic installations (Espinosa et al., 2012; Fthenakis and Alsema, 2006; Knapp and Jester, 2001), but it can be applied to energy use in many types of product (Elshout et al., 2015) or could also give payback time for other impact categories.

3.4.4. Inherent variations

In conventional LCIA methods, CFs are determined with average or marginal approaches that model changes in the impact according to a change in the inventory (Frischknecht and Jolliet, 2016; Hauschild and Huijbregts, 2015). With this average approach, the environmental disturbances from different activities are aggregated, historically referred to as “snapshots” of a studied system (Bright et al., 2011; Heijungs and Suh, 2002; Klöpffer, 2014; Levasseur et al., 2016; Owens, 1997b; Vigon et al., 1993). For example, most existing models for characterising toxic impacts (Rosenbaum et al., 2008) assume constant environmental conditions for the assessment of health impacts. With this approach, inherent variations of the ecosystem are not considered.

3.4.4.1. Non-linear mechanisms in the ecosystem. The marginal approach addresses an impact resulting from a small change to a given background concentration. The impact is therefore positioned in relation to the current environmental state. For example, studies of human health impacts from exposure to fine particulate matter (PM_{2.5}), where indoor, outdoor, urban and rural locations have shown significant differences in PM_{2.5} background levels (Fantke et al., 2017). A non-linear exposure-

response model thus accounts for these differences in PM_{2.5} levels, reflecting a slope for low concentrations that are substantially higher than for high concentrations (Fantke et al., 2019).

Impact assessment models are representations of complex environmental mechanisms that depend on a long list of parameters, such as the lifetime of substances in the environment and the sensitivities of ecosystems over different temporal scopes (Lenzen et al., 2004). In many LCIA methods, CFs are defined from generic parameters values in stationary conditions (e.g. intervention quantity, baseline for target substances, and profiles of the soil composition) or for a given TH. Subsequently, impacts are assumed linearly proportional to the inventoried emissions, which enable the scaling of impacts to any functional unit. In reality, the involved environmental mechanisms are dynamic and often highly complex (Arbault et al., 2014). They depend on the physical, chemical and biological phenomena and non-linear interaction occurring in nature and are consequences of the elementary flows generated by human activities.

Time-dependent characterisation has been performed in some cases by modelling the dynamics for one or more of the three factors influencing an impact (i.e. environmental fate, exposure, and effects), thus creating a type of DLCIA methods. Effect data are typically not easily linked to temporal properties, allowing for temporal considerations in effect modelling (e.g. dose response for human effects or concentration response for ecological effects). Hence, time-dependent characterisation is usually only facilitated by considering the dynamics of systems in the fate and exposure factors of an impact pathway, which is usually enabled by models of the underlying mass balance for a given impact pathway. This has been implemented, for example, in toxicity-related impacts (Lebailly et al., 2014), where the system dynamics of the environmental fate factor are either solved via numerical integration (Shimako et al., 2017), or via matrix decomposition (Fantke et al., 2013).

3.4.5. Temporal resolution

3.4.5.1. Specific temporal resolution for each elementary flow. The temporal considerations within LCIA models may follow specific frequencies (e.g. yearly changes), as well as temporal-inherent features deriving from dynamic biogeochemical processes. The frequency can be differentiated, for instance, as responding to episodic (e.g. initial land clearing), cyclical (e.g. seasonal water and pesticide use), stochastic (e.g. 1 in 20 years' waste discharge), or continual (e.g. fisheries yields) variations in the studied system (Lenzen et al., 2004). Cyclical or seasonal variations concerning sunlight, temperature and precipitation on the calendar year (e.g. winter vs summer time) are other examples of temporal considerations that could be relevant for impact categories like aquatic eutrophication (Udo de Haes et al., 2002), water scarcity (Boulay et al., 2015), human toxicity (Manneh et al., 2012) and photochemical oxidant formation (Shah and Ries, 2009). Such frequencies therefore highlight relevant temporal resolutions for the temporal differentiation of elementary flows in databases and DLCIs. Temporal inherent features may vary with hourly, daily, monthly or yearly constraints depending on temporal patterns or modelling time steps of the characterisation models (Collet, 2012; Owens, 1997b).

The temporal scope of impact assessment itself may be aligned with the dynamics of governing biogeochemical processes to more accurately represent certain fate dynamics. For instance, Liao et al. (2015) found that common seeding-to-harvest assessment periods in agricultural LCAs do not correspond to the actual dynamics of fertilising substances, some of which contribute to eutrophication during the next crop rotation. The same concerns agricultural pesticides, where the time between the application and crop harvest drives related residues leading to human exposure (Fantke et al., 2011). Such fate dynamics can still be analysed and parameterised to fit steady-state models and associated impact pathways, such as human toxicity (Fantke et al., 2012; Fantke et al., 2013).

3.4.6. Modelling evolutions

3.4.6.1. Considering variations for concentration substances and the state of the environment. Elementary flows may have varying levels of effect, depending on the timing of emissions (i.e. period of occurrence) and the state of the environment (i.e. varying substance concentrations). Temporal considerations of environmental mechanisms in LCA studies are challenging because the current state of practice rarely allows to account for the periods of emission occurrences that are related to a product's life cycle (Finkbeiner et al., 2014; Hellweg and Frischknecht, 2004; Jørgensen et al., 2014; Kendall et al., 2009; Levasseur et al., 2010; Reap et al., 2008b). In fact, LCI flows are typically given as simple values that are considered to be a representation of steady or pulsed flows from and to the environment by most LCIA models. For instance, impacts characterisation methods often use an effect factor for a given concentration of pollutants in the background environment (Finnveden et al., 2009; Hauschild, 2005). Thus, the same amount and type of elementary flows (i.e. equivalent LCIs) can generate different levels of impacts because they have been emitted at different periods of occurrence (e.g. 2016 or 2017), with varying flows (i.e. inherent variations) and geographies, requiring both temporal and spatial differentiation. In this case, calendar specifications may be relevant to assess and compare the evolution of impacts and/or background concentrations over time (e.g. 1990 Kyoto Protocol and the 1750 IPCC reference years for climate change). The inherent variations in the state of the environment can also affect the CFs. For example, temporary changes in the carbon cycle from land use (Vazquez-Rowe et al., 2014) and related changes in the albedo of the land surface are two dynamic aspects that can bring variations in environmental impacts (Bright et al., 2012). Such variations are currently difficult to assess since they are not linked to "standard" elementary flows, which are always the source of impacts in the usual LCA framework.

3.4.7. Strategies for prospective modelling

As is the case for technosphere models, it is, in principle, possible to forecast the environmental responses of the ecosphere to elementary emissions with the use of scenarios.

3.4.7.1. Scenarios. An alternative form of temporal considerations in LCIA is increasingly performed on scenario-driven case studies. It has been applied to water use impacts by means of scenario-bound CFs, where each scenario represents a different prospective TH (Núñez et al., 2015). It is a step towards considering the temporal variability of environmental indicators, as most LCIA methods make the implicit assumption that the environment and its properties will not evolve over the studied life cycle. Another common example is the case of metal leaching in ground that has been forecasted with different scenarios (Huijbregts et al., 2001; Pettersen and Hertwich, 2008).

3.4.8. Computational framework

Recently, some DLCIA methods have been developed with different computational frameworks. These approaches are key to understand the links between DLCLs and DLCIA methods, while offering potential pathways for future developments.

3.4.8.1. Period-specific characterisation factors. In the last decade, LCA researchers have developed DLCIA methods addressing time dependent impacts as a function of time, yet they are mainly restricted to GWP and toxicity indicators. These DLCIA methods consider the periods of occurrence for emissions by providing different period-specific CFs to assess their impacts. For example, CFs can be calculated for each year over a chosen time horizon or for the month of January 2020. These CFs thus bring consistency between the temporal scopes of DLCL and impacts (Levasseur et al., 2010). Different LCA scholars found that the results based on such DLCIA methods provide useful examples for decision-making, among others, on: "the intensity, extend and

frequency of the impacts" (Lebailly et al., 2014), the sensitivity of the results to various TH choices (Levasseur et al., 2012b), and the optimisation options from scenario-bound simulations (Shimako et al., 2017). The DLCL method developed by Levasseur et al. (Levasseur et al., 2010) is currently one of the most recognised and sophisticated approaches, featuring period-specific CFs. In addition, calendar-specifications can be relevant to assess and compare the evolution of impacts and/or background concentrations over time (e.g. 1990 Kyoto Protocol and the 1750 IPCC reference years for climate change).

3.4.8.2. Time-dependent characterisation functions. Recent works (Shimako et al., 2017; Shimako et al., 2018; Shimako et al., 2016) have proposed to come back to the origins of impact simulation tools and adapt them by adding temporal information in the LCIA phase. The idea is to consider the opportunities of using DLCLs as inputs for DLCIA models. Such a DLCIA model has been proposed to assess toxicity impacts (human and ecotoxicity) by Shimako et al. (2017) and has been applied in a full DLCA study. The model reintroduces the time dimension for fate modelling of substances in the environment, providing the temporal distributions of substances in different environmental compartments. The physical parameters for the calculation of fate, exposure and effect factors were taken from the USEtox model. This method doesn't propose period-specific CFs, but directly calculates the impacts by coupling the impact model with all the available information in DLCLs.

The definition of ecotoxicity according to time also allows to evaluating the intensity of the impact for different periods of occurrence, which supports the identification of critical periods for potential impacts. The cumulated toxicity then represents the total damage generated over a TH. When compared with conventional USEtox results, obtained in steady state conditions, the DLCA results are systematically lower, but toxicity tends towards the conventional results for an infinite TH. Non-persistent substances (generally organic) generate almost all their hazard potential during their periods of emission and disappear more or less rapidly due to the degradation or transfer to sink compartments (removal). In contrast, persistent substances accumulate in environmental compartments during the emission periods and their toxicity potentials remain high after the emissions stop, potentially affecting many human generations.

3.4.9. Approach and tools

As was explained in Section 3.3.2, some examples of using combined DLCL and DLCIA methods have been published recently for DyPLCA (Shimako et al., 2017; Shimako et al., 2016) and Temporalis (Cardellini et al., 2018) respectively for the toxicity and climate change categories. Still, this type of combination is rare and can only be done for few impact assessment methods with period-specific characterisation factors or time-dependent characterisation functions. Further developments are definitely required here to allow for a comprehensive consideration of the dynamics of impacts in future DLCA studies.

4. Proposed development pathways

It is rather straightforward to define key temporal considerations within the DLCA framework when the challenges of data availability and management are overlooked. Indeed, the general goal can be summarised by a desire to reach the highest level of temporal representativeness and to provide useful information for analysis, when considering the dynamic of systems in all of the model components. It would then seem relevant to:

- Clearly define calendar-based temporal scopes for all flows of a DLCL to outline the periods of elementary flow occurrences that justify the choice for DLCIA methods with specific temporal scopes or THs. This temporal information would also set a clear temporal frame of

reference for all stakeholders who want to identify when their decisions will have effects. Moreover, a period of validity for the results of a LCA study should be set as mandatory information to offer an explicit estimation of the period when results can be considered representative and when updates would be necessary.

- Use comprehensive calendar-specific information for the models of the technosphere and ecosphere systems. It would thus be possible to clearly explain when historical data is considered representative. Prospective data based on forecasting strategies and CFs representing future impacts could also be reported explicitly to substantiate the basis for evolution of processes and their temporal scopes. A clear separation between historic and future-related results would then show the proportion of impacts that can only be based on forecasting assumptions.
- Describe the inherent variations of all flows and CFs over a life cycle with the necessary level of detail to minimise the temporal uncertainty of results. Temporal distributions of flows would be defined relative to systems' components for a common framework of assessment, which considers the dynamics of system and impacts that need to be modelled.

Reaching such a comprehensive and complex representation for temporal considerations in the LCA framework would considerably increase our ability to differentiate the impacts of different systems by removing most of the temporal uncertainties from simplifications, but it is probably out of reach and might not be necessary for most comparisons. Consequently, the current challenge lies more in finding the right balance between additional efforts for data collection, modelling complexity and sufficient temporal representativeness. The search for such a "simple but complex enough" implementation strategy is therefore the key to propose the next development steps for temporal considerations in DLCA.

4.1. Stepwise approach for temporal considerations with current knowledge

While many developments can be proposed (see following subsections), it is important to recognise that we can already build a strategy from previous ideas and discussions on temporal considerations LCA (Section 3). We thus suggest the following 14 steps and 9 questions within the four standard phases of the LCA framework to help practitioners in the identification of where and how temporal considerations could be included.

Fig. 3 presents this stepwise general approach, which can be used for any study or system. Sector specific additions have been proposed for some cases like the building sector (Collinge et al., 2013b; Negishi et al., 2018; Pittau et al., 2019) and biogenic carbon (Breton et al., 2018; Guest et al., 2013), which could be used in some DLCA studies.

The colour code is the same as the one used in Fig. 2 to highlight connections where solid- or white-filled boxes respectively present common and rarer temporal considerations in current LCA studies. Some other remarks are important to use this stepwise approach. First, the chosen technosphere systems in step 1 (S1) is important to identify potential temporal discrepancies and sectors where DLCA is more often useful as explained in the introduction (e.g. buildings, energy). Second, the white-filled box of the goal & scope are mostly providing further information on different temporal scopes that are usually not explicitly defined in LCA studies. Third, step 9 (S9) and question 5 (Q5) are the initial places where the need to use a DLCA approach might be identified. Step 12 (S12) and question 7 (Q7) might also highlight such a need. In both cases, different options are available (i.e. S9a, S9b, S12a) depending on the aimed level of detail.

The final step (S14) of sensitivity analysis on temporal parameters is certainly useful but currently difficult to implement comprehensively, like what has been proposed by Collet et al. (2014), mainly because there is still a need for deeper investigation of this aspect for all impact categories. Nevertheless, some analyses on technological parameters of the technosphere models are possible and have been carried out for buildings (Asdrubali et al., 2020; Hu, 2018), photovoltaic installations (Louwen et al., 2016) and other renewable energy sources (Pehnt, 2006). A more complete analysis of ecoinvent v2.2 also showed the important variations of GWP when a DLCA was conducted for processes related to wood, biofuels, infrastructure and electricity (Pinsonnault et al., 2014). These examples show that potential technological improvements and increased lifetimes should be investigated in many DLCA studies, but it is not yet possible to provide a full overview of relevant temporal parameters in models.

4.2. Temporal considerations in the goal and scope definition

Temporal considerations, presented in Section 3.1, mostly offer partial, implicit and qualitative information about when LCA studies are temporally representative or for when potential impacts are occurring. Temporal scopes of results in LCA studies are sometimes more explicitly defined, but they are not commonly provided, which hinders transparent and fair comparisons among results of different studies (Caffrey and Veal, 2013; Dandres et al., 2012; Huang et al., 2012; Woo et al., 2015). Lack of consistency in the vocabulary that describes the models' components and the linked LCIs or LCIA methods also brings some issues to simplify the exchange of temporal information. These obstacles should be addressed to access the wealth of information and metadata that is currently provided in LCA databases and studies. Two propositions are thus made for potential development pathways:

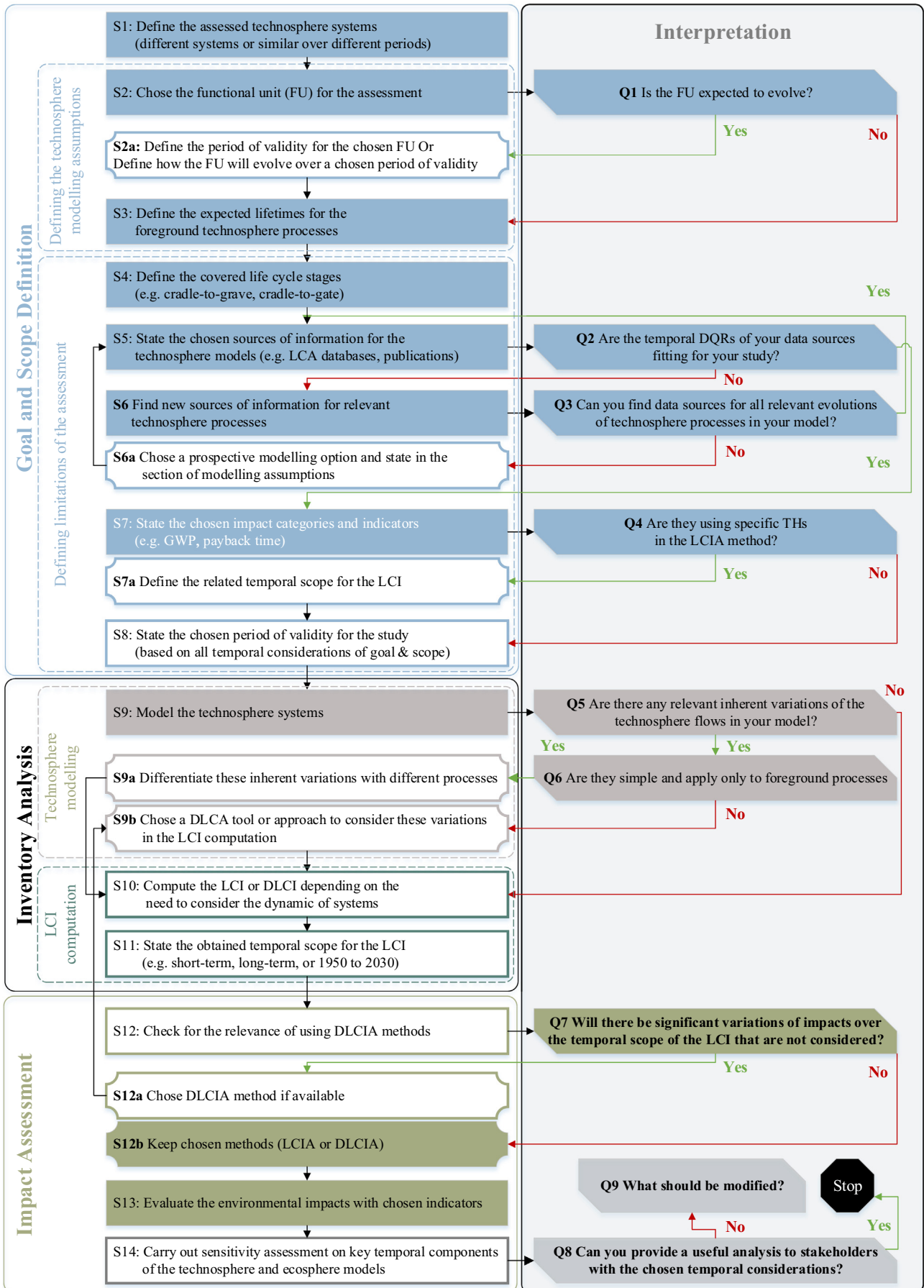
1. Recognise and use a common structure and vocabulary to discuss and exchange on the subject of temporal considerations in the DLCA framework, databases and studies (see Section 2 for propositions).
2. Employ common metadata formats to automate the exchange of temporal information and thus provide access to the wealth of temporal information that is currently provided in LCA databases and studies, as well as to manage the expected significant increase in data requirements for this subject.

A specific example for automation is the development of guidelines to define the different temporal scopes consistently and periods of validity that should be provided in LCA databases for all datasets and studies for all processes. The authors are well aware of the challenge in asking a community to accept a common framework for such a broad subject, but data providers would benefit from the identification of common patterns and of "translation" options between data format.

4.3. Time dependent modelling of human activities

Strategies to account for inherent variations and future evolution of systems and impacts have always been implicitly considered in LCA. The mere goal of summing elementary flows over the full life cycle is a testament of this. Nevertheless, most of the current studies show an implicit assumption that human activities and associated elementary flows will not change significantly over their temporal scopes or that such changes do not have to be considered to differentiate the environmental impacts of two products with equivalent functions.

Alternatively, DLCA studies start from the assumption that inherent variations, periods of occurrence and evolution need to be accounted. The basic principle is to consider such levels of temporal considerations



with process differentiation, which turns out to be challenging due to the large amount of temporal information needed whenever a comprehensive and detailed description of the life cycle is expected. The temporal differentiation of flows with process-relative temporal distributions has also been shown to be feasible, but has not yet been implemented in commercial databases. Given the current challenges and options, the next steps of development for time-dependent system modelling are suggested, as follows:

1. Carry out a comprehensive review of methodologies and approaches where dynamic modelling is considered in other fields of research to identify strategies that might not yet be proposed for the DLCA framework. For instance, DLCA is intrinsically rooted on modelling the dynamics of systems. Many models' components describe a large system, featuring several thousands of processes in the technology matrix and many hundreds of elementary flows in the intervention matrix. The introduction of timed variables in the matrixes and vectors of calculation can induce non-linear trends in the causal relationships. Delays might appear in the datasets (e.g. storage processes) or in the interventions (buffer zones at technosphere/ecosphere interface). The discontinuities form due to temporal switch between technical flows (e.g. seasonal supply) or abrupt release could also arise. All these aspects cause a real issue for solving, simulating and providing DLCA results under a reasonable computation time. Nonetheless, system dynamics is a well-studied topic in applied mathematics and control theory. The introduction of temporal considerations into the field of LCA would thus benefit from the knowledge of these research areas or disciplines.
2. Provide more process-relative temporal distributions to describe all flows and use these distributions within new computational tools. The identification of key sources for temporal variability within systems is probably the best way to start this work and will increase our knowledge on this subject in an iterative manner. Furthermore, process-relative descriptions should be combined with calendar-specific processes that change automatically when they are no longer representative of the operating technology or activity over the considered life cycle (i.e. period of validity). Furthermore, the temporal resolution that is sufficient for such distributions should be balanced with the efforts to describe the models (i.e. data management and gathering).
3. Consider that some technosphere flows or processes might have fixed historical settings when human activities are represented. For example, all elementary flows that are linked to the construction phase of hydro power plants in a country will not have different periods of occurrence if they are linked to past or future products.
4. Identify and define the temporal correlation of flows in current databases. From a mechanistic point of view, these relationships exist (e.g. carbon content in CO₂ from tailpipe emission depends on fuel consumption) and LCA practitioners can use them when creating datasets. By making these relationships explicit, one could simplify the introduction of temporal considerations in datasets, as some are intrinsically linked over time (e.g. nitrate emissions at the crop level are strongly related to the crop production cycle).
5. Find solutions for temporal considerations with co-product management and allocation. Indeed, the avoided product approach raises the question of how avoided product(s) can be modelled in time. Should it be simultaneous to the co-product or following the co-product creation, assuming that the replacement will take place afterwards? A non-physical allocation raises other questions about temporal considerations. For instance, to ensure carbon balance, corrections are made when multi-output processes are split into several single-output processes. Artificial positive and negative CO₂ emissions are added up to match the carbon fixations to the carbon content of a product (Weidema, 2018). This approach is, for example, used

in the ecoinvent database under "At Point of Substitution (APOS)" and "Cut-off" system models (Wernet et al., 2016). These allocation options question whether to maintain these flows in DLCA, and if so, how to position these artificial flows over time. Therefore the period of occurrence will be difficult to justify in DLCA.

6. Offer more explicit and complete list of choices made for prospective (or retrospective) modelling and the use of scenarios. The reason for using such modelling approach is to provide results with future (or historic) perspectives that fit more with the objectives of LCA practitioners. It is important to recognise that it is currently challenging to find a consensus on a "best" option for any case study. In such a context, a more achievable goal is to improve the transparency of modelling choices. It would also be useful to separate the elementary flows that are linked to past and present processes from the ones that are based on prospective models. This would clarify the share of impacts issued from modelling assumptions in prospective models.

4.4. Inventory calculation: keeping time in the LCI

The recently developed conceptual frameworks and tools (see Sections 3.3.1 and 3.3.2) employ a common computational structure based on graph search algorithms to calculate DLCA. This structure uses process-relative temporal distributions to describe the flows within system models. Such a consensus suggests that the computational structure for DLCA and the corresponding tools could become a standard, but implementation challenges are still limiting their use. It thus seems relevant to:

1. Carry out more DLCA studies with these tools to increase the understanding of the LCA community and to develop the use of process-relative descriptions in LCA databases.
2. Check the importance of temporal resolution for flows in DLCA. A LCA system can represent many dynamics, because of the size of the system and the inherent temporal variations of the production processes, emissions and resource consumption, as well as of the environmental mechanisms. This issue has already been identified and discussed in some LCA studies where process dynamics are relevant. For instance, Collet et al. (2014) discussed the necessary match between the emission dynamic and the impact category to justify such temporal considerations. Shimako et al. (2018) dealt with the time step of simulations regarding the impact features and showed the gap between examples of climate change (year) and ecotoxicity (day). Urban traffic is another example of the time-resolution aspect that shows the relevance of intraday dynamic for commuters since they mainly travel at the beginning and the end of the working period. Moreover, let's consider, for the sake of clarity, that both carbon dioxide and particulate matter have an intraday emission dynamic. If this resolution seems suitable for the fate of particulate matter, it is clearly too short for climate change mechanisms, where a yearly resolution would be sufficient. The transportation activity also needs infrastructure, which is defined over decades, adding an even slower dynamic to the system. Consequently, urban traffic is a good example of a system that merges multiple time resolutions with fast and slow environmental effects. Investigating different systems with varying timescales will thus be relevant to identify temporal consistency in systems.

4.5. Dynamics of impact assessment

Temporal considerations in methods for impact characterisation can be introduced with the choice of specific THs. The recent developments in DLCA methods have focused on the impact categories of climate change, toxicity and ozone depletion, but there is the need to further

Table 4
Summary of proposed development paths for temporal consideration in a DLCA framework.

Proposed development paths	Purposes of the targets			Challenge level
	Defining the temporal scope	Considering the dynamics of systems	Increasing the temporal representativeness	
4.2 Time in the goal and scope definition				
1. Use of a standard glossary to describe temporal considerations in DLCA databases and studies	X	X		++
2. Use of common metadata descriptions to automate the exchange of temporal information	X	X		++
4.3 Time dependent modelling of human activities				
1. Investigate how other fields of research are modelling the dynamic of systems		X		+
2. Provide more process-relative temporal distributions in DLCA studies to describe flows		X		++
3. Identify the fixed historical nature of some technosphere processes	X	X	X	++
4. Describe the temporal correlation of flows in datasets of LCA databases		X		++
5. Find solution(s) for allocation that can be accepted by the LCA community		X	X	+++
6. Offer more explicit and complete list of choices made when prospective modelling is used	X	X	X	+++
4.4 Inventory calculation with temporal properties				
1. Carry out more DLCA studies with current approach and tool to increase understanding		X	X	++
2. Evaluate the importance of temporal resolution in the description of DLCA for DLCA		X		+++
4.5 Dynamics of impact assessment				
1. Consistent use of THs in DLCA studies with sensitivity assessment	X		X	+++
2. Provide lists of relevant time scales for each impact category	X			++
3. Update CFs when changes in background concentration have substantial effects			X	+
4. Offer more explicit and complete list of choices made when prospective modelling is used	X	X	X	+++

explore temporal considerations in the phase of impact assessment for the following subjects:

1. Identify methods to consistently consider THs in DLCA studies for impact categories where it is relevant. A clear definition of the temporal scope covered by the LCIA methods would indeed be useful when impacts have strong time dependency. The choice of a TH should be based on the limits that are set in the goal and scope of a case study. However, to reduce value-laden choices, sensitivity analysis should be encouraged to assess the temporal variability in results. For instance, by determining the use of different THs or setting different end-years in the dynamic results when using period specific CFs.
2. Propose a clear list of the relevant time scales for each LCIA category to fix database requirements in the definition of elementary flows for any datasets. As explained before, environmental mechanisms for different impacts of substances will occur within diverse temporal scopes. These specific periods for each impact category can therefore provide guidance on the required resolution of temporal distributions to describe the elementary flows of LCIs, while minimising the temporal uncertainty.
3. Update the considered background concentrations in ecosphere models (i.e. impact assessment methods) when they substantially change the obtained CFs for an impact category. Sensitivity analyses could be performed on past and current concentration levels in order to assess temporal variability of CFs, and to propose, if necessary, updated values for prospective and/or retrospective studies.
4. Propose strategies for transparent use of prospective assumptions in ecosphere models. Identifying the parameters that were or will be affected by historic or future modifications of the environment could be particularly relevant in the context of forecasting system evolution. Temporal parameters may be based on, for example, projections of population density, or scenario-bound background concentrations. A clear identification and transparent disclosure of the temporal parameters that most affect the calculation of CFs could indeed be an important added value for impact assessment methods.

Collaboration between experts of LCA databases, LCI computation and LCIA methods should be strengthened to develop a common

framework for temporal considerations in any impact assessment methods.

4.6. Summary of potential development paths for temporal considerations in DLCA

Table 4 presents a summary of the proposed developments from Sections 4.2 to 4.5 with their main purposes along the different phases of the LCA framework and a qualitative assessment of the expected level of challenge to reach these targets. This assessment goes from + (i.e. basic efforts) to +++ (significant efforts).

5. Conclusions

Considerable efforts have been made in the last 20 years to include temporal considerations within the LCA framework and to show that accounting for such aspects significantly affects the results of, at least, some case studies. For instance, LCA studies on systems with long lifespan (e.g. buildings) can benefit from models and tools where the dynamics of energy flows are considered with more details (i.e. variations and evolution). Periods of validity for datasets, which represent rapidly progressing technologies (e.g. photovoltaic cells), are important temporal information, provided in some LCA databases. Furthermore, dynamic LCIA methods have now been developed to account for impacts that vary significantly when the timing of emission change. Overall, the suggested approaches, tools and strategies increase the temporal representativeness of LCA studies and decrease the temporal uncertainty of models the technosphere and its impacts. Nevertheless, their uses in current LCA studies are still uncommon, which can be explained mainly by a lack of consistent descriptions and the challenges of gathering temporal information.

With that in mind, we offer some propositions for the next steps of developments in the DLCA framework. A glossary is proposed to build a common and consistent understanding on the key concepts that often come up in discussions on the subject. This common understanding should then help in the use of the already available information that can be found in LCA databases and studies under

different names. The consistent description of this metadata should also simplify the automated exchange of information between different software options and practitioners. The temporal boundaries of DLCIs (i.e. temporal scope) should be defined within a calendar-based description (e.g. between 1990 and 2020) to improve the potential for representativeness of the impact assessments and the fairness of comparison between systems. In addition, our overview on temporal considerations in the LCI phase suggests that a preferred pathway seems to emerge in the computational approach (i.e. graph search algorithms) for DLCA, but it will require the use of process-relative temporal distributions to describe flows in datasets (i.e. input format). This information should then provide temporal distributions for all elementary flows. A balance between necessary data collection efforts and reduction of uncertainties should define the temporal resolution of such distributions. It will also be important to consider the chosen DLCA methods when selecting the temporal resolutions of flows. Lastly, the current development of the DLCA methods should continue by pursuing the estimation of uncertainty and variability that comes up in all impact categories when temporal information is not provided to describe the input LCI. It is then recommended to identify a relevant level of temporal resolution that would minimise the temporal uncertainty of the models for impact assessments.

Declaration of competing interest

The authors declare that they have no known competing financial interests or personal relationships that could have appeared to influence the work reported in this paper.

Acknowledgements

The authors want to thank both the EMPA and IFPEN institutes for funding their work, which allowed time to work on the bulk of this review paper. The first author would also like to highlight that some of this work stems from his time at MINES ParisTech when he was under the supervision of Isabelle Blanc.

References

- Albers, A., Collet, P., Benoist, A., Hélias, A., 2019a. Back to the future: dynamic full carbon accounting applied to prospective bioenergy scenarios. *Int. J. Life Cycle Assess.*
- Albers, A., Collet, P., Benoist, A., Hélias, A., 2019b. Data and non-linear models for the estimation of biomass growth and carbon fixation in managed forests. *Data in Brief* 23, 103841.
- Albers, A., Collet, P., Lorne, D., Benoist, A., Hélias, A., 2019c. Coupling partial-equilibrium and dynamic biogenic carbon models to assess future transport scenarios in France. *Appl. Energy* 239, 316–330.
- Albers, A., Avadí, A., Benoist, A., Collet, P., Hélias, A., 2020. Modelling dynamic soil organic carbon flows of annual and perennial energy crops to inform energy-transport policy scenarios in France. *Sci. Total Environ.* 718, 135278.
- Alvarez-Gaitan, J.P., Short, M.D., Peters, G.M., MacGill, I., Moore, S., 2014. Consequential cradle-to-gate carbon footprint of water treatment chemicals using simple and complex marginal technologies for electricity supply. *Int. J. Life Cycle Assess.* 19, 1974–1984.
- Amor, M.B., Gaudreault, C., Pineau, P.-O., Samson, R., 2014. Implications of Integrating Electricity Supply Dynamics into Life Cycle Assessment: A Case Study of Renewable Distributed Generation.
- Anand, C.K., Amor, B., 2017. Recent developments, future challenges and new research directions in LCA of buildings: a critical review. *Renew. Sustain. Energy Rev.* 67, 408–416.
- Arbault, D., Riviere, M., Rugani, B., Benetto, E., Tiruta-Barna, L., 2014. Integrated earth system dynamic modeling for life cycle impact assessment of ecosystem services. *Sci. Total Environ.* 472, 262–272.
- Arodudu, O., Helming, K., Wiggering, H., Voinov, A., 2017. Towards a more holistic sustainability assessment framework for agro-bioenergy systems - a review. *Environ. Impact Assess. Rev.* 62, 61–75.
- Asdrubali, F., Baggio, P., Prada, A., Grazieschi, G., Guattari, C., 2020. Dynamic life cycle assessment modelling of a NZEB building. *Energy* 191, 116489.
- Azarifafari, H., Yahia, A., Ben Amor, M., 2016. Life cycle assessment of pavements: reviewing research challenges and opportunities. *J. Clean. Prod.* 112, 2187–2197.
- Bakas, I., Hauschild, M.Z., Astrup, T.F., Rosenbaum, R.K., 2015. Preparing the ground for an operational handling of long-term emissions in LCA. *Int. J. Life Cycle Assess.* 20, 1444–1455.
- Bauer, C., Hofer, J., Althaus, H.-J., Del Duce, A., Simons, A., 2015. The environmental performance of current and future passenger vehicles: life cycle assessment based on a novel scenario analysis framework. *Appl. Energy* 157, 871–883.
- Beames, A., Broekx, S., Heijungs, R., Lookman, R., Boonen, K., Van Geert, Y., et al., 2015. Accounting for land-use efficiency and temporal variations between brownfield remediation alternatives in life-cycle assessment. *J. Clean. Prod.* 101, 109–117.
- Beloin-Saint-Pierre, D., Heijungs, R., Blanc, I., 2014. The ESPA (enhanced structural path analysis) method: a solution to an implementation challenge for dynamic life cycle assessment studies. *Int. J. Life Cycle Assess.* 19, 861–871.
- Beloin-Saint-Pierre, D., Levasseur, A., Margni, M., Blanc, I., 2017. Implementing a dynamic life cycle assessment methodology with a case study on domestic hot water production. *J. Ind. Ecol.* 21, 1128–1138.
- Beloin-Saint-Pierre, D., Padey, P., Périsset, B., Medici, V., 2019. Considering the dynamics of electricity demand and production for the environmental benchmark of Swiss residential buildings that exclusively use electricity. *IOP Conference Series: Earth and Environmental Science* 323, 012096.
- Benoist, A., 2009. Adapting Life-cycle Assessment to Biofuels: Some Elements From the First Generation Case. *École Nationale Supérieure des Mines de Paris*.
- Bessou, C., Ferchaud, F., Gabrielle, B., Mary, B., 2011. Biofuels, greenhouse gases and climate change. A review. *Agron. Sustain. Dev.* 31, 1–79.
- Bessou, C., Basset-Mens, C., Tran, T., Benoist, A., 2013. LCA applied to perennial cropping systems: a review focused on the farm stage. *Int. J. Life Cycle Assess.* 18, 340–361.
- Boulay, A.-M., Bayart, J.-B., Bulle, C., Franceschini, H., Motoshita, M., Muñoz, I., et al., 2015. Analysis of water use impact assessment methods (part B): applicability for water footprinting and decision making with a laundry case study. *Int. J. Life Cycle Assess.* 20, 865–879.
- Brandao, M., Levasseur, A., 2011. Assessing Temporary Carbon Storage in Life Cycle Assessment and Carbon Footprinting: Outcomes of an Expert Workshop. *Joint Research Centre - Institute for Environment and Sustainability, Luxembourg*.
- Breton, C., Blanchet, P., Amor, B., Beauregard, R., Chang, W.-S., 2018. Assessing the climate change impacts of biogenic carbon in buildings: a critical review of two Main dynamic approaches. *Sustainability* 10.
- Bright, R.M., Strømman, A.H., Peters, G.P., 2011. Radiative forcing impacts of boreal Forest biofuels: a scenario study for Norway in light of albedo. *Environmental Science & Technology* 45, 7570–7580.
- Bright, R.M., Cherubini, F., Stromman, A.H., 2012. Climate impacts of bioenergy: inclusion of carbon cycle and albedo dynamics in life cycle impact assessment. *Environ. Impact Assess. Rev.* 37, 2–11.
- BSI, 2011. Specification for the Assessment of the Life Cycle Greenhouse Gas Emissions of Goods and Services. *PAS 2050*. p. 2011 London.
- Caffrey, K.R., Veal, M.W., 2013. Conducting an agricultural life cycle assessment: challenges and perspectives. *Sci. World J.* 2013, 472431. <https://www.ncbi.nlm.nih.gov/pmc/articles/PMC3874300/>.
- Canals, L.M.I., Bauer, C., Depestele, J., Dubreuil, A., Knuchel, R.F., Gaillard, G., et al., 2007. Key elements in a framework for land use impact assessment within LCA. *Int. J. Life Cycle Assess.* 12, 5–15.
- Cardellini, G., Mutel, C.L., Vial, E., Muys, B., 2018. Temporalis, a generic method and tool for dynamic life cycle assessment. *Sci. Total Environ.* 645, 585–595.
- Cheah, L.W., IEEE, 2009. Materials Flow Analysis and Dynamic Life-cycle Assessment of Lightweight Automotive Materials in the US Passenger Vehicle Fleet.
- Cherubini, F., Peters, G.P., Berntsen, T., Strømman, A.H., Hertwich, E., 2011. CO₂ emissions from biomass combustion for bioenergy: atmospheric decay and contribution to global warming. *GCB Bioenergy* 3, 413–426.
- Cherubini, F., Guest, G., Stromman, A.H., 2012. Application of probability distributions to the modeling of biogenic CO₂ fluxes in life cycle assessment. *Global Change Biology Bioenergy* 4, 784–798.
- Choi, J.K., Friley, P., Alfstad, T., 2012. Implications of energy policy on a product system's dynamic life-cycle environmental impact: survey and model. *Renew. Sustain. Energy Rev.* 16, 4744–4752.
- Chowdhury, R.B., Moore, G.A., Weatherley, A.J., Arora, M., 2017. Key sustainability challenges for the global phosphorus resource, their implications for global food security, and options for mitigation. *J. Clean. Prod.* 140, 945–963.
- Collet, P., 2012. Analyse de Cycle de Vie de la valorisation énergétique de la biomasse algale : prise en compte des aspects dynamiques dans l'étape d'inventaire.
- Collet, P., Hélias, A., Lardon, L., Steyer, J.-P., 2011. Time and life cycle assessment: how to take time into account in the inventory step? In: Finkbeiner, M. (Ed.), *Towards Life Cycle Sustainability Management*. Springer Netherlands, Dordrecht, pp. 119–130.
- Collet, P., Lardon, L., Steyer, J.P., Helias, A., 2014. How to take time into account in the inventory step: a selective introduction based on sensitivity analysis. *Int. J. Life Cycle Assess.* 19, 320–330.
- Collinge, W.O., DeBois, J.C., Sweriduk, M.E., Landis, A.E., Jones, A.K., Schaefer, L.A., et al., 2012. Measuring whole-building performance with dynamic LCA: a case study of a Green University building. In: Ventura, A., de la Roche, C. (Eds.), *International Symposium on Life Cycle Assessment and Construction*. RILEM, pp. 309–317.
- Collinge, W., Landis, A.E., Jones, A.K., Schaefer, L.A., Bilec, M.M., 2013a. Indoor environmental quality in a dynamic life cycle assessment framework for whole buildings: focus on human health chemical impacts. *Build. Environ.* 62, 182–190.
- Collinge, W.O., Landis, A.E., Jones, A.K., Schaefer, L.A., Bilec, M.M., 2013b. Dynamic life cycle assessment: framework and application to an institutional building. *Int. J. Life Cycle Assess.* 18, 538–552.
- Collinge, W.O., Rickenbacker, H.J., Landis, A.E., Thiel, C.L., Bilec, M.M., 2018. Dynamic life cycle assessments of a conventional green building and a net zero energy building: exploration of static, dynamic, attributional, and consequential electricity grid models. *Environmental Science & Technology* 52, 11429–11438.

- Daly, H.E., Scott, K., Strachan, N., Barrett, J., 2015. Indirect CO₂ emission implications of energy system pathways: linking IO and TIMES models for the UK. *Environmental Science & Technology* 49, 10701–10709.
- Dandres, T., Gaudreault, C., Tirado-Seco, P., Samson, R., 2011. Assessing non-marginal variations with consequential LCA: application to European energy sector. *Renew. Sust. Energy Rev.* 15, 3121–3132.
- Dandres, T., Gaudreault, C., Tirado-Seco, P., Samson, R., 2012. Macroanalysis of the economic and environmental impacts of a 2005–2025 European Union bioenergy policy using the GTAP model and life cycle assessment. *Renew. Sustain. Energy Rev.* 16, 1180–1192.
- de Faria, A.B.B., Sperandio, M., Ahmadi, A., Tiruta-Bama, L., 2015. Evaluation of new alternatives in wastewater treatment plants based on dynamic modelling and life cycle assessment (DM-LCA). *Water Res.* 84, 99–111.
- Dyckhoff, H., Kasah, T., 2014. Time horizon and dominance in dynamic life cycle assessment. *J. Ind. Ecol.* 18, 799–808.
- Earles, J.M., Halog, A., Ince, P., Skog, K., 2013. Integrated economic equilibrium and life cycle assessment modeling for policy-based consequential LCA. *J. Ind. Ecol.* 17, 375–384.
- Elshout, P.M.F., Rv, Zelm, Balkovic, J., Obersteiner, M., Schmid, E., Skalsky, R., et al., 2015. Greenhouse-gas payback times for crop-based biofuels. *Nat. Clim. Chang.* 5, 604–610.
- Espinosa, N., Hösel, M., Angmo, D., Krebs, F.C., 2012. Solar cells with one-day energy payback for the factories of the future. *Energy Environ. Sci.* 5, 5117–5132.
- Fantke, P., Jolliet, O., 2016. Life cycle human health impacts of 875 pesticides. *Int. J. Life Cycle Assess.* 21, 722–733.
- Fantke, P., Juraske, R., Antón, A., Friedrich, R., Jolliet, O., 2011. Dynamic multicrop model to characterize impacts of pesticides in food. *Environmental Science & Technology* 45, 8842–8849.
- Fantke, P., Wieland, P., Juraske, R., Shaddick, G., Itoiz, E.S., Friedrich, R., et al., 2012. Parameterization models for pesticide exposure via crop consumption. *Environmental Science & Technology* 46, 12864–12872.
- Fantke, P., Wieland, P., Wannaz, C., Friedrich, R., Jolliet, O., 2013. Dynamics of pesticide uptake into plants: from system functioning to parsimonious modeling. *Environ. Model Softw.* 40, 316–324.
- Fantke, P., Jolliet, O., Apte, J.S., Hodas, N., Evans, J., Weschler, C.J., et al., 2017. Characterizing aggregated exposure to primary particulate matter: recommended intake fractions for indoor and outdoor sources. *Environmental Science & Technology* 51, 9089–9100.
- Fantke, P., Aurisano, N., Bare, J., Backhaus, T., Bulle, C., Chapman, P.M., et al., 2018. Toward harmonizing ecotoxicity characterisation in life cycle impact assessment. *Environ. Toxicol. Chem.* 37, 2955–2971.
- Fantke, P., McKone, T.E., Tainio, M., Jolliet, O., Apte, J.S., Stylianou, K.S., et al., 2019. Global effect factors for exposure to fine particulate matter. *Environmental Science & Technology* 53, 6855–6868.
- Fearnside, P.M., 2002. Time preference in global warming calculations: a proposal for a unified index. *Ecol. Econ.* 41, 21–31.
- Fernandez-Mena, H., Nesme, T., Pellerin, S., 2016. Towards an agro-industrial ecology: a review of nutrient flow modelling and assessment tools in agro-food systems at the local scale. *Sci. Total Environ.* 543, 467–479.
- Finkbeiner, M., Ackermann, R., Bach, V., Berger, M., Brankatschk, G., Chang, Y.-J., et al., 2014. Challenges in life cycle assessment: an overview of current gaps and research needs. In: Klöpffer, W. (Ed.), *Background and Future Prospects in Life Cycle Assessment*. Springer, Netherlands, Dordrecht, pp. 207–258.
- Finnveden, G., Hauschild, M.Z., Ekvall, T., Guinee, J., Heijungs, R., Hellweg, S., et al., 2009. Recent developments in life cycle assessment. *J. Environ. Manag.* 91, 1–21.
- Fitzpatrick, J.J., 2016. Environmental sustainability assessment of using forest wood for heat energy in Ireland. *Renew. Sustain. Energy Rev.* 57, 1287–1295.
- Fouquet, M., Levasseur, A., Margni, M., Lebert, A., Lasvaux, S., Souyri, B., et al., 2015. Methodological challenges and developments in LCA of low energy buildings: application to biogenic carbon and global warming assessment. *Build. Environ.* 90, 51–59.
- Frijia, S., Guhathakurta, S., Williams, E., 2012. Functional unit, technological dynamics, and scaling properties for the life cycle energy of residences. *Environmental Science & Technology* 46, 1782–1788.
- Frischknecht, R., Jolliet, O., 2016. *Global Guidance for Life Cycle Impact Assessment Indicators*. vol. 1 Paris.
- Fthenakis, V., Alsema, E., 2006. Photovoltaics energy payback times, greenhouse gas emissions and external costs: 2004 – early 2005 status. *Prog. Photovolt.* 14, 275–280.
- Garcia, R., Gregory, J., Freire, F., 2015. Dynamic fleet-based life-cycle greenhouse gas assessment of the introduction of electric vehicles in the Portuguese light-duty fleet. *Int. J. Life Cycle Assess.* 20, 1287–1299.
- Guest, G., Stromman, A.H., 2014. Climate change impacts due to biogenic carbon: addressing the issue of attribution using two metrics with very different outcomes. *J. Sustain. For.* 33, 298–326.
- Guest, G., Cherubini, F., Stromman, A.H., 2013. Global warming potential of carbon dioxide emissions from biomass stored in the Anthroposphere and used for bioenergy at end of life. *J. Ind. Ecol.* 17, 20–30.
- Hauschild, M.Z., 2005. Assessing environmental impacts in a life-cycle perspective. *Environmental Science & Technology* 39, 81A–88A.
- Hauschild, M.Z., Huijbregts, M.A.J., 2015. *Life Cycle Impact Assessment*. Springer, Netherlands.
- Hauschild, M.Z., Potting, J., Hertel, O., Schopp, W., Bastrup-Birk, A., 2006. Spatial differentiation in the characterisation of photochemical ozone formation – the EDIP2003 methodology. *Int. J. Life Cycle Assess.* 11, 72–80.
- Hauschild, M., Goedkoop, M., Guinée, J., Heijungs, R., Huijbregts, M., Jolliet, O., et al., 2013. Identifying best existing practice for characterisation modeling in life cycle impact assessment. *Int. J. Life Cycle Assess.* 18, 683–697.
- Heeren, N., Jakob, M., Martius, G., Gross, N., Wallbaum, H., 2013. A component based bottom-up building stock model for comprehensive environmental impact assessment and target control. *Renew. Sustain. Energy Rev.* 20, 45–56.
- Heijungs, R., Suh, S., 2002. *The Computational Structure of Life Cycle Assessment*. vol 11. Kluwer Academic, Dordrecht, The Netherlands.
- Helin, T., Sokka, L., Soimakallio, S., Pingoud, K., Pajula, T., 2013. Approaches for inclusion of forest carbon cycle in life cycle assessment – a review. *Global Change Biology Bioenergy* 5, 475–486.
- Hellweg, S., Frischknecht, R., 2004. Evaluation of long-term impacts in LCA. In: DfO, LCA. (Ed.), *22nd Discussion Forum on LCA*. Discussion Forum on LCA, Zurich, pp. 339–341.
- Hellweg, S., Milà i Canals, L., 2014. Emerging approaches, challenges and opportunities in life cycle assessment. *Science* 344, 1109.
- Hellweg, S., Hofstetter, T.B., Hungerbühler, K., 2003a. Discounting and the environment – should current impacts be weighted differently than impacts harming future generations? *Int. J. Life Cycle Assess.* 8, 8–18.
- Hellweg, S., Hofstetter, T.B., Hungerbühler, K., 2003b. Discounting and the environment should current impacts be weighted differently than impacts harming future generations? *Int. J. Life Cycle Assess.* 8, 8.
- Hellweg, S., Hofstetter, T.B., Hungerbühler, K., 2005. Time-dependent life-cycle assessment of slag landfills with the help of scenario analysis: the example of Cd and Cu. *J. Clean. Prod.* 13, 301–320.
- Herfray, G., Peuportier, B., 2012. Evaluation of electricity related impacts using a dynamic LCA model. In: Ventura, A., de la Roche, C. (Eds.), *International Symposium on Life Cycle Assessment and Construction*. RILEM, pp. 300–308.
- Herrchen, M., 1998. Perspective of the systematic and extended use of temporal and spatial aspects in LCA of long-lived products. *Chemosphere* 37, 265–270.
- Hertwich, E.G., Gibon, T., Bouman, E.A., Arvesen, A., Suh, S., Heath, G.A., et al., 2015. Integrated life-cycle Assessment of Electricity-supply Scenarios Confirms Global Environmental Benefit of Low-carbon Technologies.
- Hofstetter, P., Baumgartner, T., Scholz, R.W., 2000. Modelling the valuesphere and the ecosystem: integrating the decision makers' perspectives into LCA. *Int. J. Life Cycle Assess.* 5, 161.
- Holmquist, H., Fantke, P., Cousins, I.T., Owsianiak, M., Liagkouridis, I., Peters, G.M., 2020. An (eco)toxicity life cycle impact assessment framework for per- and polyfluoroalkyl substances. *Environmental Science & Technology* 54, 6224–6234.
- Hoxha, E., Jusselme, T., Andersen, M., Rey, E., 2016. Introduction of a dynamic interpretation of building LCA results: the case of the smart living (lab) building in Fribourg, Switzerland. *Sustainable Built Environment (SBE)*.
- Hu, M., 2018. Dynamic life cycle assessment integrating value choice and temporal factors – a case study of an elementary school. *Energy and Buildings* 158, 1087–1096.
- Huang, C.L., Vause, J., Ma, H.W., Yu, C.P., 2012. Using material/substance flow analysis to support sustainable development assessment: a literature review and outlook. *Resources Conservation and Recycling* 68, 104–116.
- Huijbregts, M.A.J., Guinee, J.B., Reijnders, L., 2001. Priority assessment of toxic substances in life cycle assessment. III: export of potential impact over time and space. *Chemosphere* 44, 59–65.
- Huijbregts, M.A.J., Steinmann, Z.J.N., Elshout, P.M.F., Stam, G., Verones, F., Vieira, M.D.M., et al., 2016. ReCiPe2016. A Harmonized Life Cycle Impact Assessment Method at Mid-point and Endpoint Level. National Institute for Public Health and the Environment, Nijmegen.
- Igos, E., Rugani, B., Rege, S., Benetto, E., Drouet, L., Zachary, D., et al., 2014. Integrated environmental assessment of future energy scenarios based on economic equilibrium models. *Metallurgical Research & Technology* 111, 179–189.
- Igos, E., Rugani, B., Rege, S., Benetto, E., Drouet, L., Zachary, D.S., 2015. Combination of equilibrium models and hybrid life cycle-input-output analysis to predict the environmental impacts of energy policy scenarios. *Appl. Energy* 145, 234–245.
- Inyim, P., Pereyra, J., Bienvenu, M., Mostafavi, A., 2016. Environmental assessment of pavement infrastructure: a systematic review. *J. Environ. Manag.* 176, 128–138.
- IPCC, Press, C.U. (Eds.), 2013. *Climate Change 2013: The Physical Science Basis*. Contribution of Working Group I to the Fifth Assessment Report of the Intergovernmental Panel on Climate Change. IPCC, Cambridge, United Kingdom and New York, NY, USA, p. 1535.
- IPCC, 2014. *Climate Change 2014: Synthesis Report*. Contribution of Working Groups I, II and III to the Fifth Assessment Report of the Intergovernmental Panel on Climate Change. IPCC, Geneva, Switzerland, p. 151.
- ISO14040, 2006. *Life Cycle Assessment Principles and Framework*. Environmental Management.
- ISO14044, 2006. *Life cycle assessment Requirements and guidelines*. Environmental management.
- Joint Research Center IFEAS, European Commission, 2010. *ILCD Handbook – General Guide for Life Cycle Assessment - Detailed Guidance*. Vol EUR 24708 EN. Publication Office of the European Union, Luxembourg.
- Joint Research Center IFEAS, European Commission, 2011. *ILCD Handbook: Recommendations for Life Cycle Impact Assessment in the European Context*. EC-JRC, Luxembourg.
- Jolliet, O., Margni, M., Charles, R., Humbert, S., Payet, J., Rebitzer, G., et al., 2003. IMPACT 2002+: a new life cycle impact assessment methodology. *Int. J. Life Cycle Assess.* 8, 324–330.
- Jolliet, O., Saadé, M., Crettaz, P., Shaked, S., 2010. *Analyse du cycle de vie - Comprendre et réaliser un écobilan*. EPFL - Lausanne - Suisse: Presses polytechniques et universitaires romandes.
- Jørgensen, S.V., Hauschild, M.Z., Nielsen, P.H., 2014. Assessment of urgent impacts of greenhouse gas emissions—the climate tipping potential (CTP). *Int. J. Life Cycle Assess.* 19, 919–930.
- Jørgensen, S.V., Hauschild, M.Z., Nielsen, P.H., 2015. The potential contribution to climate change mitigation from temporary carbon storage in biomaterials. *Int. J. Life Cycle Assess.* 20, 451–462.

- Karl, A.A.W., Maslesa, E., Birkved, M., 2019. Environmental performance assessment of the use stage of buildings using dynamic high-resolution energy consumption and data on grid composition. *Build. Environ.* 147, 97–107.
- Kendall, A., 2012. Time-adjusted global warming potentials for LCA and carbon footprints. *Int. J. Life Cycle Assess.* 17, 1042–1049.
- Kendall, A., Chang, B., Sharpe, B., 2009. Accounting for time-dependent effects in biofuel life cycle greenhouse gas emissions calculations. *Environmental Science & Technology* 43, 7142–7147.
- Kim, S.J., Kara, S., Hauschild, M., 2017. Functional unit and product functionality—addressing increase in consumption and demand for functionality in sustainability assessment with LCA. *Int. J. Life Cycle Assess.* 22, 1257–1265.
- Klöppfer, W., 2014. Introducing life cycle assessment and its presentation in 'LCA compendium'. In: Klöppfer, W. (Ed.), *Background and Future Prospects in Life Cycle Assessment*. Springer Netherlands, Dordrecht, pp. 1–37.
- Knapp, K., Jester, T., 2001. Empirical investigation of the energy payback time for photovoltaic modules. *Sol. Energy* 71, 165–172.
- Knoeri, C., Waeger, P.A., Stamp, A., Althaus, H.J., Weil, M., 2013. Towards a dynamic assessment of raw materials criticality: linking agent-based demand - with material flow supply modelling approaches. *Sci. Total Environ.* 461, 808–812.
- Koellner, T., de Baan, L., Beck, T., Brandao, M., Civit, B., Margni, M., et al., 2013. UNEP-SETAC guideline on global land use impact assessment on biodiversity and ecosystem services in LCA. *Int. J. Life Cycle Assess.* 18, 1188–1202.
- Lebailly, F., Levasseur, A., Samson, R., Deschenes, L., 2014. Development of a dynamic LCA approach for the freshwater ecotoxicity impact of metals and application to a case study regarding zinc fertilization. *Int. J. Life Cycle Assess.* 19, 1745–1754.
- Lenzen, M., Dey, C.J., Murray, S.A., 2004. Historical accountability and cumulative impacts: the treatment of time in corporate sustainability reporting. *Ecol. Econ.* 51, 237–250.
- Levasseur, A., Lesage, P., Margni, M., Deschenes, L., Samson, R., 2010. Considering time in LCA: dynamic LCA and its application to global warming impact assessments. *Environmental Science & Technology* 44, 3169–3174.
- Levasseur, A., Brandao, M., Lesage, P., Margni, M., Pennington, D., Clift, R., et al., 2012a. Valuing temporary carbon storage. *Nature Clim. Change* 2, 6–8.
- Levasseur, A., Lesage, P., Margni, M., Brandao, M., Samson, R., 2012b. Assessing temporary carbon sequestration and storage projects through land use, land-use change and forestry: comparison of dynamic life cycle assessment with ton-year approaches. *Clim. Chang.* 115, 759–776.
- Levasseur, A., Lesage, P., Margni, M., Samson, R., 2013. Biogenic carbon and temporary storage addressed with dynamic life cycle assessment. *J. Ind. Ecol.* 17, 117–128.
- Levasseur, A., Cavaletto, O., Fuglestvedt, J.S., Gasser, T., Johansson, D.J.A., Jørgensen, S.V., et al., 2016. Enhancing life cycle impact assessment from climate science: review of recent findings and recommendations for application to LCA. *Ecol. Indic.* 71, 163–174.
- Liao, W.J., van der Werf, H.M.G., Salmon-Monviola, J., 2015. Improved environmental life cycle assessment of crop production at the catchment scale via a process-based nitrogen simulation model. *Environmental Science & Technology* 49, 10790–10796.
- Ling-Chin, J., Heidrich, O., Roskilly, A.P., 2016. Life cycle assessment (LCA) - from analysing methodology development to introducing an LCA framework for marine photovoltaic (PV) systems. *Renew. Sustain. Energy Rev.* 59, 352–378.
- Louwen, A., van Sark, W.G.J.H.M., Faaij, A.P.C., Schropp, R.E.L., 2016. Re-assessment of net energy production and greenhouse gas emissions avoidance after 40 years of photovoltaics development. *Nat. Commun.* 7, 13728.
- Lueddeckens, S., Saling, P., Guenther, E., 2020. Temporal issues in life cycle assessment—a systematic review. *Int. J. Life Cycle Assess.* 10.1007/978-1-1367-020-01757-1
- Maier, M., Mueller, M., Yan, X.Y., 2017. Introducing a localised spatio-temporal LCI method with wheat production as exploratory case study. *J. Clean. Prod.* 140, 492–501.
- Manneh, R., Margni, M., Deschênes, L., 2012. Evaluating the relevance of seasonal differentiation of human health intake fractions in life cycle assessment. *Integr. Environ. Assess. Manag.* 8, 749–759.
- Marvuglia, A., Benetto, E., Rege, S., Jury, C., 2013. Modelling approaches for consequential life-cycle assessment (C-LCA) of bioenergy: critical review and proposed framework for biogas production. *Renew. Sustain. Energy Rev.* 25, 768–781.
- Marvuglia, A., Kanevski, M., Benetto, E., 2015. Machine learning for toxicity characterisation of organic chemical emissions using USEtox database: learning the structure of the input space. *Environ. Int.* 83, 72–85.
- Maurice, E., Dandres, T., Moghaddam, R.F., Nguyen, K., Lemieux, Y., Cherriet, M., et al., 2014. Modelling of Electricity Mix in Temporal Differentiated Life-cycle assessment to Minimize Carbon Footprint of a Cloud Computing Service. *ICT for Sustainability 2014 (ICT4S-14)*. Atlantis Press.
- McManus, M.C., Taylor, C.M., 2015. The changing nature of life cycle assessment. *Biomass Bioenergy* 82, 13–26.
- Mehmeti, A., McPhail, S.J., Pumiglia, D., Carlini, M., 2016. Life cycle sustainability of solid oxide fuel cells: from methodological aspects to system implications. *J. Power Sources* 325, 772–785.
- Mendivil, R., Fischer, U., Hirao, M., Hungerbühler, K., 2006. A new LCA methodology of technology evolution (TE-LCA) and its application to the production of ammonia (1950–2000) (8 pp). *Int. J. Life Cycle Assess.* 11, 98–105.
- Menten, F., Tchung-Ming, S., Lorne, D., Bouvart, F., 2015. Lessons from the use of a long-term energy model for consequential life cycle assessment: the BTL case. *Renew. Sustain. Energy Rev.* 43, 942–960.
- Messagie, M., Mertens, J., Oliveira, L., Rangaraju, S., Sanfeliu, J., Coosemans, T., et al., 2014. The hourly life cycle carbon footprint of electricity generation in Belgium, bringing a temporal resolution in life cycle assessment. *Appl. Energy* 134, 469–476.
- Miller, S.A., Moysey, S., Sharp, B., Alfaro, J., 2013. A stochastic approach to model dynamic systems in life cycle assessment. *J. Ind. Ecol.* 17, 352–362.
- Miotti, M., Hofer, J., Bauer, C., 2017. Integrated environmental and economic assessment of current and future fuel cell vehicles. *Int. J. Life Cycle Assess.* 22, 94–110.
- Morais, S.A., Delerue-Matos, C., 2010. A perspective on LCA application in site remediation services: critical review of challenges. *J. Hazard. Mater.* 175, 12–22.
- Müller-Wenk, R., Brandão, M., 2010. Climatic impact of land use in LCA—carbon transfers between vegetation/soil and air. *Int. J. Life Cycle Assess.* 15, 172–182.
- Mutel, C., 2017. Brightway: an open source framework for life cycle assessment. *Journal of Open Source Software* 2, 236.
- Myhre, G., Shindell, D., Bréon, F.-M., Collins, W., Fuglestvedt, J., Huang, J., et al., 2013. Anthropogenic and natural radiative forcing. In: Stocker, T.F., Qin, D., Plattner, G.-K., Tignor, M., Allen, S.K., Boschung, J., Nauels, A., Xia, Y., Bex, V., Midgley, P.M. (Eds.), *IPCC, editor. Climate Change 2013: The Physical Science Basis. Contribution of Working Group I to the Fifth Assessment Report of the Intergovernmental Panel on Climate Change*. IPCC, Cambridge, United Kingdom and New York, NY, USA, pp. 659–740.
- Negishi, K., Tiruta-Barna, L., Schiopu, N., Lebert, A., Chevalier, J., 2018. An operational methodology for applying dynamic life cycle assessment to buildings. *Build. Environ.* 144, 611–621.
- Negishi, K., Lebert, A., Almeida, D., Chevalier, J., Tiruta-Barna, L., 2019. Evaluating climate change pathways through a building's lifecycle based on dynamic life cycle assessment. *Build. Environ.* 164, 106377.
- Noori, M., Tatar, O., 2016. Development of an agent-based model for regional market penetration projections of electric vehicles in the United States. *Energy* 96, 215–230.
- Núñez, M., Pfister, S., Vargas, M., Antón, A., 2015. Spatial and temporal specific characterisation factors for water use impact assessment in Spain. *Int. J. Life Cycle Assess.* 20, 128–138.
- O'Hare, M., Plevin, R.J., Martin, J.L., Jones, A.D., Kendall, A., Hopson, E., 2009. Proper accounting for time increases crop-based biofuels' greenhouse gas deficit versus petroleum. *Environ. Res. Lett.* 4, 024001.
- Owens, J.W., 1997a. Life-cycle assessment in relation to risk assessment: an evolving perspective. *Risk Anal.* 17, 359–365.
- Owens, J.W., 1997b. Life-cycle assessment: constraints on moving from inventory to impact assessment. *J. Ind. Ecol.* 1, 37–49.
- Owsianiak, M., Holm, P.E., Fantke, P., Christiansen, K.S., Borggaard, O.K., Hauschild, M.Z., 2015. Assessing comparative terrestrial ecotoxicity of Cd, Co, Cu, Ni, Pb, and Zn: the influence of aging and emission source. *Environ. Pollut.* 206, 400–410.
- Pahri, S.D.R., Mohamed, A.F., Samat, A., 2015. LCA for open systems: a review of the influence of natural and anthropogenic factors on aquaculture systems. *Int. J. Life Cycle Assess.* 20, 1324–1337.
- Pawelzik, P., Carus, M., Hotchkiss, J., Narayan, R., Selke, S., Wellisch, M., et al., 2013. Critical aspects in the life cycle assessment (LCA) of bio-based materials – reviewing methodologies and deriving recommendations. *Resour. Conserv. Recycl.* 73, 211–228.
- Pehnt, M., 2003a. Assessing future energy and transport systems: the case of fuel cells - part 2: environmental performance. *Int. J. Life Cycle Assess.* 8, 365–378.
- Pehnt, M., 2003b. Assessing future energy and transport systems: the case of fuel cells part 1: methodological aspects. *Int. J. Life Cycle Assess.* 8, 283–289.
- Pehnt, M., 2006. Dynamic life cycle assessment (LCA) of renewable energy technologies. *Renew. Energy* 31, 55–71.
- Peña, N., Knudsen, M.T., Fantke, P., Antón, A., Hermansen, J.E., 2019. Freshwater ecotoxicity assessment of pesticide use in crop production: testing the influence of modeling choices. *J. Clean. Prod.* 209, 1332–1341.
- Pesonen, H.-L., Ekvall, T., Fleischer, G., Huppes, G., Jahn, C., Klos, Z.S., et al., 2000. Framework for scenario development in LCA. *Int. J. Life Cycle Assess.* 5, 21.
- Pettersen, J., Hertwich, E.G., 2008. Critical review: life-cycle inventory procedures for long-term release of metals. *Environmental Science & Technology* 42, 4639–4647.
- Pfister, S., Bayer, P., Koehler, A., Hellweg, S., 2011. Projected water consumption in future global agriculture: scenarios and related impacts. *Sci. Total Environ.* 409, 4206–4216.
- Pigné, Y., Gutiérrez, T.N., Gibon, T., Schaubroeck, T., Popovici, E., Shimako, A.H., et al., 2020. A tool to operationalize dynamic LCA, including time differentiation on the complete background database. *Int. J. Life Cycle Assess.* 25, 267–279.
- Pinsonnault, A., Lesage, P., Levasseur, A., Samson, R., 2014. Temporal differentiation of background systems in LCA: relevance of adding temporal information in LCI databases. *Int. J. Life Cycle Assess.* 19, 1843–1853.
- Pittau, F., Habert, G., Iannaccone, G., 2019. A life-cycle approach to building energy retrofitting: bio-based technologies for sustainable urban regeneration. *IOP Conference Series: Earth and Environmental Science* 290, 012057.
- PRÉ va, 2016. *SimaPro Database Manual - Methods Library*. p. 67.
- Querini, F., Benetto, E., 2015. Combining agent-based modeling and life cycle assessment for the evaluation of mobility policies. *Environmental Science & Technology* 49, 1744–1751.
- Reap, J., Roman, F., Duncan, S., Bras, B., 2008a. A survey of unresolved problems in life cycle assessment - part 1. *Int. J. Life Cycle Assess.* 13, 290–300.
- Reap, J., Roman, F., Duncan, S., Bras, B., 2008b. A survey of unresolved problems in life cycle assessment - part 2. *Int. J. Life Cycle Assess.* 13, 374–388.
- Rebitzer, G., Ekvall, T., Frischknecht, R., Hunkeler, D., Norris, G., Rydberg, T., et al., 2004. Life cycle assessment: part 1: framework, goal and scope definition, inventory analysis, and applications. *Environ. Int.* 30, 701–720.
- Recchioni, M., Mathieux, F., Goralczyk, M., Schau, E.M., 2013. *ILCD Data Network and ELCD Database: Current Use and Further Needs for Supporting Environmental Footprint and Life Cycle Indicator Projects*. Joint Research Centre, Ispra, Italy, p. 33.
- Risch, E., Gasperi, J., Gromaire, M.-C., Chebbo, G., Azimi, S., Rocher, V., et al., 2018. Impacts from urban water systems on receiving waters – how to account for severe wet-weather events in LCA? *Water Res.* 128, 412–423.
- Roder, M., Thornley, P., 2016. Bioenergy as climate change mitigation option within a 2 degrees C target-uncertainties and temporal challenges of bioenergy systems. *Energy Sustainability and Society* 6.
- Rosenbaum, R.K., Bachmann, T.M., Gold, L.S., Huijbregts, M.A.J., Joliet, O., Juraske, R., et al., 2008. USEtox—the UNEP-SETAC toxicity model: recommended characterisation

- factors for human toxicity and freshwater ecotoxicity in life cycle impact assessment. *Int. J. Life Cycle Assess.* 13, 532–546.
- Rosenbaum, R.K., Anton, A., Bengoa, X., Bjørn, A., Brain, R., Bulle, C., et al., 2015. The Glasgow consensus on the delineation between pesticide emission inventory and impact assessment for LCA. *Int. J. Life Cycle Assess.* 20, 765–776.
- Roux, C., Schalbart, P., Assoumou, E., Peuportier, B., 2016a. Integrating climate change and energy mix scenarios in LCA of buildings and districts. *Appl. Energy* 184, 619–629.
- Roux, C., Schalbart, P., Peuportier, B., 2016b. Accounting for temporal variation of electricity production and consumption in the LCA of an energy-efficient house. *J. Clean. Prod.* 113, 532–540.
- Roux, C., Schalbart, P., Peuportier, B., 2017. Development of an electricity system model allowing dynamic and marginal approaches in LCA—tested in the French context of space heating in buildings. *Int. J. Life Cycle Assess.* 22, 1177–1190.
- Saez de Bikuña, K., Hamelin, L., Hauschild, M.Z., Pilegaard, K., Ibrom, A., 2018. A comparison of land use change accounting methods: seeking common grounds for key modeling choices in biofuel assessments. *J. Clean. Prod.* 177, 52–61.
- Sandberg, N.H., Brattebø, H., 2012. Analysis of energy and carbon flows in the future Norwegian dwelling stock. *Building Research & Information* 40, 123–139.
- Santero, N., Loijos, A., Akbarian, M., Ochsendorf, J., 2011. *Method, Impacts, and Opportunities in the Concrete Pavement Life Cycle*. MIT, USA, p. 103.
- Scheuer, C., Keoleian, G.A., Reppe, P., 2003. Life cycle energy and environmental performance of a new university building: modeling challenges and design implications. *Energy and Buildings* 35, 1049–1064.
- Shah, V., Ries, R., 2009. A characterisation model with spatial and temporal resolution for life cycle impact assessment of photochemical precursors in the United States. *Int. J. Life Cycle Assess.* 14, 313–327.
- Shimako, A.H., Tiruta-Barna, L., Pigne, Y., Benetto, E., Gutierrez, T.N., Guiraud, P., et al., 2016. Environmental assessment of bioenergy production from microalgae based systems. *J. Clean. Prod.* 139, 51–60.
- Shimako, A.H., Tiruta-Barna, L., Ahmadi, A., 2017. Operational integration of time dependent toxicity impact category in dynamic LCA. *Sci. Total Environ.* 599–600, 806–819.
- Shimako, A.H., Tiruta-Barna, L., Bisinella de Faria, A.B., Ahmadi, A., Spérandio, M., 2018. Sensitivity analysis of temporal parameters in a dynamic LCA framework. *Sci. Total Environ.* 624, 1250–1262.
- Shine, K.P., 2009. The global warming potential—the need for an interdisciplinary retrieval. *Clim. Chang.* 96, 467–472.
- Simons, A., Bauer, C., 2015. A life-cycle perspective on automotive fuel cells. *Appl. Energy* 157, 884–896.
- Sohn, J.L., Kalbar, P.P., Banta, G.T., Birkved, M., 2017a. Life-cycle based dynamic assessment of mineral wool insulation in a Danish residential building application. *J. Clean. Prod.* 142, 3243–3253.
- Sohn, J.L., Kalbar, P.P., Birkved, M., 2017b. Life cycle based dynamic assessment coupled with multiple criteria decision analysis: a case study of determining an optimal building insulation level. *J. Clean. Prod.* 162, 449–457.
- Sohn, J., Kalbar, P., Goldstein, B., Birkved, M., 2020. Defining temporally dynamic life cycle assessment: a literature review. *Integr. Environ. Assess. Manag.* 16, 314–323 (n/a).
- Standardisation ECF, 2009. *Assessment of Environmental Performance of Buildings Calculation Method. Sustainability of Construction Works*. EN 15978.
- Stasinopoulos, P., Compston, P., Newell, B., Jones, H.M., 2012. A system dynamics approach in LCA to account for temporal effects—a consequential energy LCI of car body-in-whites. *Int. J. Life Cycle Assess.* 17, 199–207.
- Su, S., Li, X., Zhu, Y., Lin, B., 2017. Dynamic LCA framework for environmental impact assessment of buildings. *Energy and Buildings* 149, 310–320.
- Tessum, C.W., Marshall, J.D., Hill, J.D., 2012. A spatially and temporally explicit life cycle inventory of air pollutants from gasoline and ethanol in the United States. *Environmental Science & Technology* 46, 11408–11417.
- Tiruta-Barna, L., Pigne, Y., Gutierrez, T.N., Benetto, E., 2016. Framework and computational tool for the consideration of time dependency in life cycle inventory: proof of concept. *J. Clean. Prod.* 116, 198–206.
- Udo de Haes H, Finnveden G, Goedkoop M, Hauschild M, Hertwich E, Hofstetter P, et al. *Life-Cycle Impact Assessment: Striving Towards Best Practice*. In: (SETAC) SoETaC, editor, 2002.
- Vazquez-Rowe, I., Marvuglia, A., Flammang, K., Braun, C., Leopold, U., Benetto, E., 2014. The use of temporal dynamics for the automatic calculation of land use impacts in LCA using R programming environment. *Int. J. Life Cycle Assess.* 19, 500–516.
- Viebahn, P., Lechon, Y., Trieb, F., 2011. The potential role of concentrated solar power (CSP) in Africa and Europe—a dynamic assessment of technology development, cost development and life cycle inventories until 2050. *Energy Policy* 39, 4420–4430.
- Vigon, B.W., Tolle, D.A., Cornaby, B.W., Latham, H.C., Harrison, C.L., Boguski, T.L., et al., 1993. In: EPA (Ed.), *Life-cycle Assessment: Inventory Guidelines and Principles*. EPA, Cincinnati, Ohio, US.
- Vogtländer, J.G., van der Velden, N.M., van der Lugt, P., 2014. Carbon sequestration in LCA, a proposal for a new approach based on the global carbon cycle; cases on wood and on bamboo. *Int. J. Life Cycle Assess.* 19, 13–23.
- Vuarnoz, D., Jusselme, T., 2018. Temporal variations in the primary energy use and greenhouse gas emissions of electricity provided by the Swiss grid. *Energy* 161, 573–582.
- Vuarnoz, D., Cozza, S., Jusselme, T., Magnin, G., Schafer, T., Couty, P., et al., 2018. Integrating hourly life-cycle energy and carbon emissions of energy supply in buildings. *Sustain. Cities Soc.* 43, 305–316.
- Walker, S.B., Fowler, M., Ahmadi, L., 2015. Comparative life cycle assessment of power-to-gas generation of hydrogen with a dynamic emissions factor for fuel cell vehicles. *Journal of Energy Storage* 4, 62–73.
- Walzberg, J., Dandres, T., Merveille, N., Cheriet, M., Samson, R., 2019a. Accounting for fluctuating demand in the life cycle assessments of residential electricity consumption and demand-side management strategies. *J. Clean. Prod.* 240, 118251.
- Walzberg, J., Dandres, T., Merveille, N., Cheriet, M., Samson, R., 2019b. Assessing behavioural change with agent-based life cycle assessment: application to smart homes. *Renew. Sust. Energy Rev.* 111, 365–376.
- Weidema, B.P., 2018. In Search of a Consistent Solution to Allocation of Joint Production. *J. Ind. Ecol.* 22, 252–262.
- Weidema, B., Bauer, C., Hischer, R., Mutel, C., Nemecek, T., Reinhard, J., et al., 2012. Overview and methodology. Data quality guideline for the ecoinvent database version 3. In: *ecoinvent (Ed.), Ecoinvent Report*. The Ecoinvent Centre, St. Gallen: The Ecoinvent Centre, p. 166.
- Weidema, B.P., Schmidt, J., Fantke, P., Pauliuk, S., 2018. On the boundary between economy and environment in life cycle assessment. *Int. J. Life Cycle Assess.* 23, 1839–1846.
- Wernet, G., Bauer, C., Steubing, B., Reinhard, J., Moreno-Ruiz, E., Weidema, B., 2016. The ecoinvent database version 3 (part I): overview and methodology. *Int. J. Life Cycle Assess.* 21, 1218–1230.
- Woo, C., Chung, Y., Chun, D., Seo, H., Hong, S., 2015. The static and dynamic environmental efficiency of renewable energy: a Malmquist index analysis of OECD countries. *Renew. Sustain. Energy Rev.* 47, 367–376.
- Yang, J., Chen, B., 2014. Global warming impact assessment of a crop residue gasification project—a dynamic LCA perspective. *Appl. Energy* 122, 269–279.
- Yang, Y., Suh, S., 2015. Changes in environmental impacts of major crops in the US. *Environ. Res. Lett.* 10.
- Yu, B., Sun, Y., Tian, X., 2018. Capturing time effect of pavement carbon footprint estimation in the life cycle. *J. Clean. Prod.* 171, 877–883.
- Yuan, C., Dornfeld, D., 2009. Embedded temporal difference in life cycle assessment: case study on VW golf A4 car. In: *IEEE (Ed.), IEEE International Symposium on Sustainable Systems and Technology*, Phoenix, Arizona, US.
- Yuan, C., Wang, E.D., Zhai, Q., Yang, F., 2015. Temporal discounting in life cycle assessment: a critical review and theoretical framework. *Environ. Impact Assess. Rev.* 51, 23–31.
- Zaimes, G.G., Vora, N., Chopra, S.S., Landis, A.E., Khanna, V., 2015. Design of sustainable biofuel processes and supply chains: challenges and opportunities. *Processes* 3, 634–663.
- Zhai, P., Williams, E.D., 2010. Dynamic hybrid life cycle assessment of energy and carbon of multicrystalline silicon photovoltaic systems. *Environmental Science & Technology* 44, 7950–7955.
- Zhai, Q., Crowley, B., Yuan, C., 2011. *Ieee. Temporal Discounting for Life Cycle Assessment: Differences between Environmental Discounting and Economic Discounting*. 2011 IEEE International Symposium on Sustainable Systems and Technology (ISSST).