

1 **SILICON SPECIATION IN LIGHT PETROLEUM PRODUCTS USING GAS**
2 **CHROMATOGRAPHY COUPLED TO ICP-MS/MS**

3 Raquel Sánchez,^{a,*} Fabien Chainet,^{b,*} Vincent Souchon,^b Sylvain Carbonneaux,^b Charles-Philippe
4 Lienemann,^b José-Luis Todolí^a

5

6 ^aDepartment of Analytical Chemistry, Nutrition and Food Sciences, P.O. Box 99, 03080, Alicante, Spain

7 ^bIFP Energies Nouvelles, Rond-point de l'échangeur de Solaize, BP 3, F-69360 Solaize, France

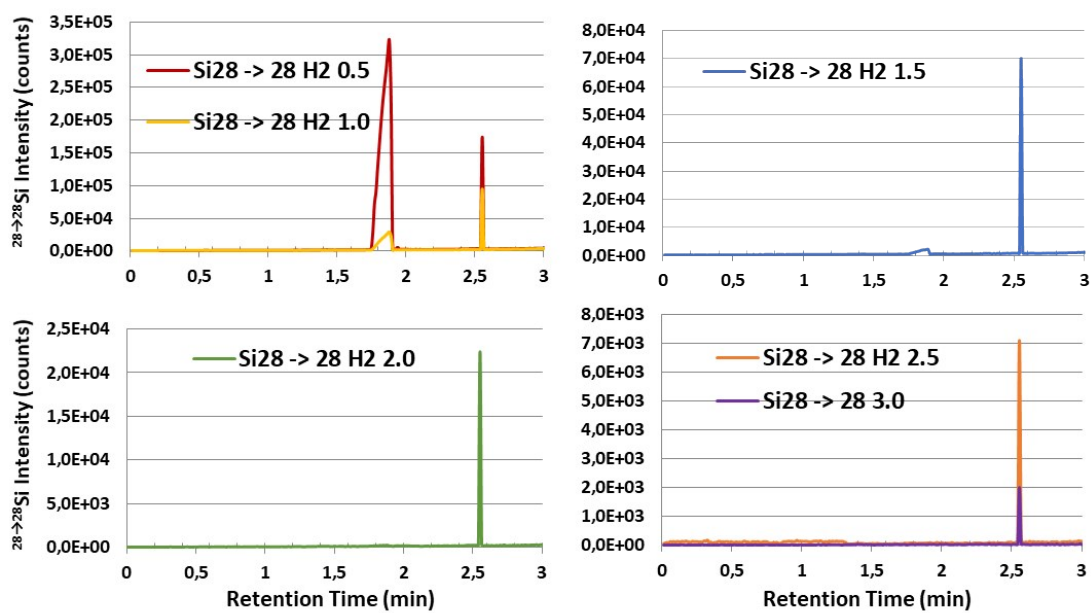
8

9 **Content**

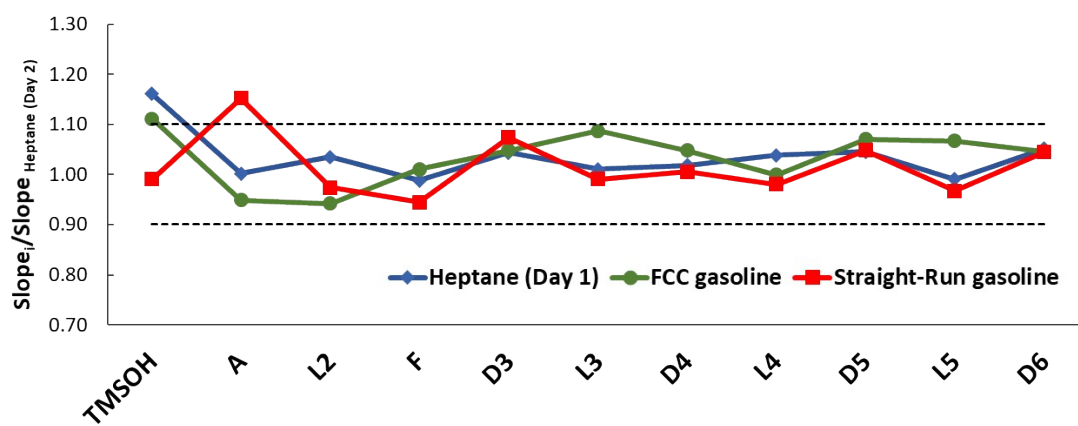
10 **Figure S1.** GC–ICP-MS chromatograms D4 at 1 mg kg⁻¹ in heptane at different flow rates of H₂ in the ORC 0.5 ml min⁻¹
11 ¹ (red); 1.0 ml min⁻¹ (yellow); 1.5 ml min⁻¹ (blue); 2.0 ml min⁻¹ (green); 2.5 ml min⁻¹ (orange); 3.0 ml min⁻¹ (purple).
12 Carrier gas flow rate: 0.5 L min⁻¹; optional gas flow rate: 0.15 L min⁻¹.2
13 **Figure S2.** Ratio of the slopes for each silicon compounds for heptane, FCC and SR gasoline compared to another in
14 heptane at the second day.....3
15 **Figure S3.** Temporal variation of the recovery for the QC samples. Carrier gas flow rate: 0.5 L min⁻¹; optional gas flow
16 rate: 0.15 L min⁻¹, H₂ gas flow rate: 2.0 mL min⁻¹.4
17 **Figure S4.** GC–ICP-MS chromatograms of the coker naphtha B and C samples (IS: internal standard). Carrier gas flow
18 rate: 0.5 L min⁻¹; optional gas flow rate: 0.15 L min⁻¹, H₂ gas flow rate: 2.0 mL min⁻¹.5

19

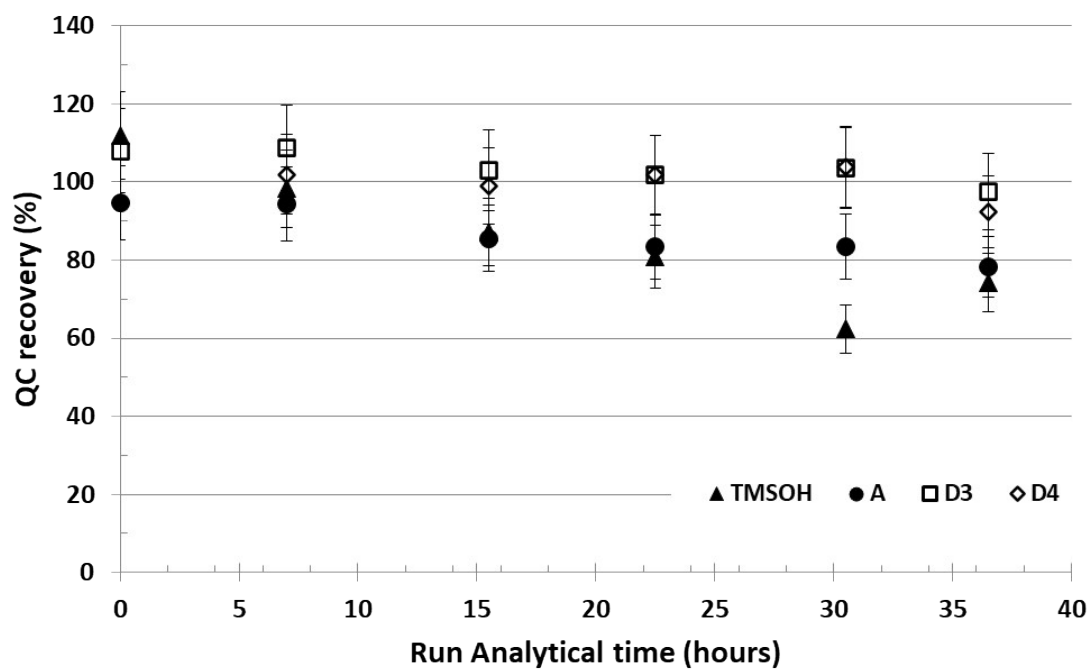
20



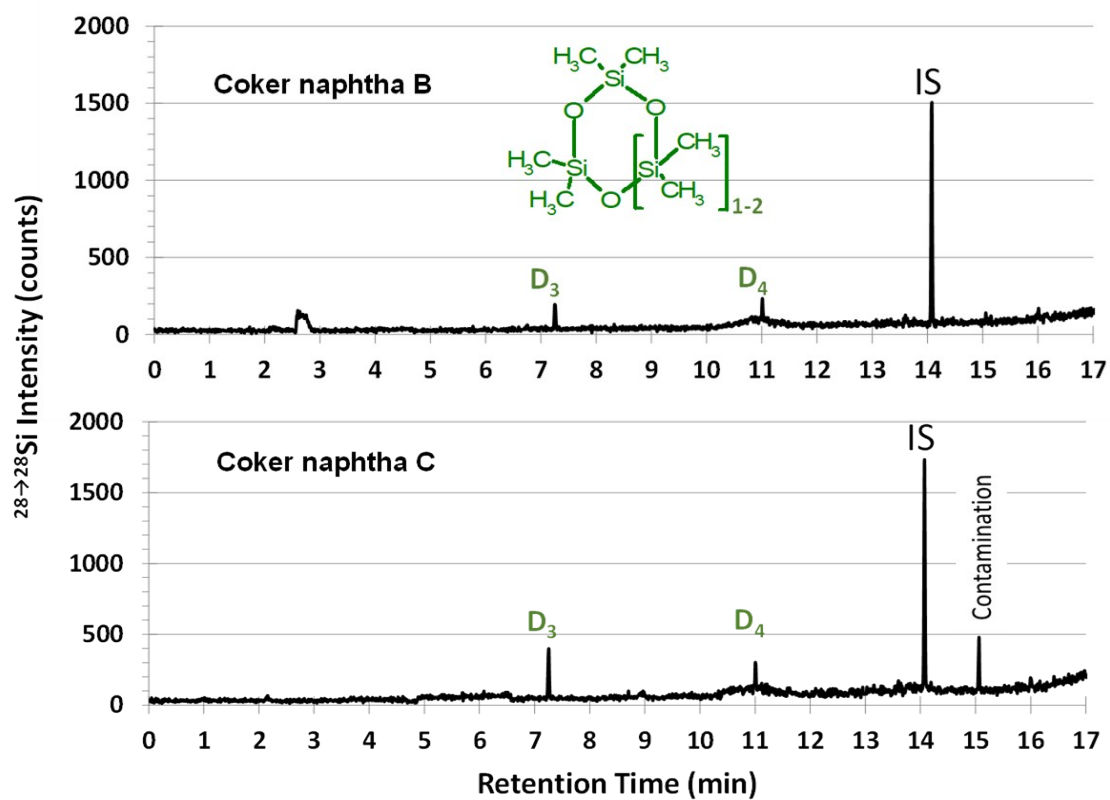
21 **Figure S1.** GC-ICP-MS chromatograms D4 at 1 mg kg^{-1} in heptane at different flow rates of H_2 in the ORC 0.5 ml min^{-1}
 22 1 (red); 1.0 ml min^{-1} (yellow); 1.5 ml min^{-1} (blue); 2.0 ml min^{-1} (green); 2.5 ml min^{-1} (orange); 3.0 ml min^{-1} (purple).
 23 Carrier gas flow rate: 0.5 L min^{-1} ; optional gas flow rate: 0.15 L min^{-1} .



25 **Figure S2.** Ratio of the slopes for each silicon compound for heptane, FCC and SR gasoline compared to another in
26 heptane at the second day.



27 **Figure S3.** Temporal variation of the recovery for the QC samples. Carrier gas flow rate: 0.5 L min⁻¹; optional gas flow
 28 rate: 0.15 L min⁻¹, H₂ gas flow rate: 2.0 mL min⁻¹.



30 **Figure S4.** GC-ICP-MS chromatograms of the coker naphtha B and C samples (IS: internal standard). Carrier gas flow
 31 rate: 0.5 L min^{-1} ; optional gas flow rate: 0.15 L min^{-1} , H_2 gas flow rate: 2.0 mL min^{-1} .
 32
 33