



HAL
open science

Prediction of Organic Pollutants Transfers in Contaminated Soils Using an In-House Thermodynamic Calculator

Kouaho Kouame, Simon V. Ayache, Pauline Michel, Pascal Mougin

► **To cite this version:**

Kouaho Kouame, Simon V. Ayache, Pauline Michel, Pascal Mougin. Prediction of Organic Pollutants Transfers in Contaminated Soils Using an In-House Thermodynamic Calculator. *International Journal of Environmental Pollution and Remediation*, 2022, 10, 10.11159/ijepr22.001 . hal-03943929

HAL Id: hal-03943929

<https://ifp.hal.science/hal-03943929>

Submitted on 17 Jan 2023

HAL is a multi-disciplinary open access archive for the deposit and dissemination of scientific research documents, whether they are published or not. The documents may come from teaching and research institutions in France or abroad, or from public or private research centers.

L'archive ouverte pluridisciplinaire **HAL**, est destinée au dépôt et à la diffusion de documents scientifiques de niveau recherche, publiés ou non, émanant des établissements d'enseignement et de recherche français ou étrangers, des laboratoires publics ou privés.



Distributed under a Creative Commons Attribution 4.0 International License

Prediction of Organic Pollutants Transfers in Contaminated Soils Using an In-House Thermodynamic Calculator

Kouaho Kouame ¹, Simon V. Ayache ¹, Pauline Michel ¹, Pascal Mougín ¹

IFP Energies nouvelles
1-4 avenue de Bois-Préau, 92852 Rueil-Malmaison, France
simon.ayache@ifpen.fr

Abstract - Regulations are becoming stricter and stricter regarding soil pollutions. At the same time the amount of money available to investigate the risks associated with soil pollutions remains limited. This paper proposes to investigate the transfer of pollutants by means of a quick running numerical tool. Indeed, this numerical tool based on equations of state has been developed to compute vapor-liquid or vapour-liquid-liquid thermodynamic equilibrium as a function of temperature and pressure. It has been specifically adapted for the study of organic pollutants in contaminated soils. This tool requires chemical information from the contaminated soil sample as input data. The soil must therefore be analysed to determine its characteristics and the total concentrations of pollutants. This information is used to calculate the overall mole fractions (z_i) of each pollutant in the contaminated soil. These mole fractions are thus the input data for the numerical tool to perform the components or pollutants distribution calculation. The results of this tool, which is called *Transfero-Pol*, therefore depend on the input data obtained from the analysis of the contaminated soil. These results make it possible to understand the long-term distribution of pollutants within the different phases of the soil as a function of temperature. In this paper, the theory behind the numerical tool *Transfero-Pol* is derived. A case study is then presented to assess the results from *Transfero-Pol* by comparing them to the outputs of a commercial software.

Keywords: Contaminated soil, Organic components, Transfer, Thermodynamic.

© Copyright 2022 Authors - This is an Open Access article published under the Creative Commons Attribution License terms (<http://creativecommons.org/licenses/by/3.0>). Unrestricted use, distribution, and reproduction in any medium are permitted, provided the original work is properly cited.

1. Introduction

According to the mid-2018 census, there were nearly 6800 contaminated sites and soils in France (see BASOL database). There are several types of pollution in soils including metal pollution (copper, lead, nickel, etc.), metalloid pollution (boron, arsenic, etc.) and Volatile Organic Components (VOCs: hydrocarbons). This paper presents a numerical tool that aims at investigating the evolution of hydrocarbons pollutants in the soil. In fact, this numerical tool computes thermodynamic flashes to determine the long-term distribution of pollutants in the different phases of the soil. By knowing which pollutants will end up in the aqueous or gaseous phases, namely the mobile phases, one can identify which pollutant is more likely to move from the original hydrocarbons pollution location and, for instance, contaminate the groundwater or be inhaled as vapor.

There are several existing numerical tools for studying the distribution of pollutants in the different phases of the soil. The numerical tools identified are NAPLANAL (Mariner et al, 1997), NAPLator (Rucker, 2003) and OREOS (Chastanet et al, 2012). These numerical tools allow to calculate and describe the distribution of organic pollutants in the different phases of the soil from their total quantities in the soil sample. Indeed, the transfer of organic pollutants between the different soil phases (aqueous phase, gas phase, NAPL phase and adsorbed phase) is generally described by the thermodynamic equilibrium laws at the soil pore scale.

The NAPLator software calculates the distribution of pollutants in the soil phases based on the assumption that the total mass composition of pollutants is

equivalent to the composition of the organic phase. This assumption could induce errors in the results for soil samples containing a small amount of organic phase. The NAPLANAL tool calculates the distribution of pollutants in the phases without any assumptions on the composition. It is no longer available.

Furthermore, OREOS is the most recent software identified for the transfer of pollutants in the soil. It has been developed and improved compared to NAPLANAL and NAPLator. However, it has certain limits, particularly in terms of accounting for the variation of the physicochemical parameters of the pollutants (Henry's constant, Solubility, Vapor pressure) in relation to the temperature variation.

Thus, to resolve all these issues, a new numerical tool have been proposed for the study of the transfer of organic pollutants in the soil. Starting from a thermodynamic calculator previously used in the field of petroleum engineering, this numerical tool has been adapted to study the transfer of organic pollutants (hydrocarbons) between the various phases of the soil, namely the aqueous, gaseous and Non-Aqueous Phase Liquids (NAPL). It is based on equations of state, namely the Soreide-Whitson model (Soreide and Whitson, 1992) and works with VBA (Visual Basic for Applications) codes written in Excel software and libraries coded in Fortran. This thermodynamic tool determines the distribution of a component or a mixture of components among the three phases at a given temperature. It can be used to predict the long-term transfer of organic pollutants from the NAPL-phase to the mobile phases (aquifer, atmosphere) and estimate the sanitary risk. The tool can also be used to estimate some effects of thermal remediation treatments on hydrocarbons-impacted soils (Vidonish et al, 2019) without requiring dynamic numerical models (Xie et al, 2016).

The objective of this work is to describe the numerical tool and investigate its capability for the study of sites contaminated by hydrocarbons, with the final aim of providing an operational tool for risk assessment of polluted sites and soils.

2. Thermodynamic equations

2. 1. Description of the thermodynamic calculator Transfero-Pol

Transfero-Pol is a numerical tool used for calculations of vapor-liquid or vapor-liquid-liquid equilibriums. It is used to determine the distribution of components in three phases (aqueous phase, non-aqueous phase (NAPL) and gas phase) from their

proportions (overall mole fractions) in an initial mixture. This distribution is a function of the pressure and temperature conditions of the medium. Transfero-Pol is based on the equations of state (EOS) as proposed by Soreide and Whitson. The main equations integrated in the Transfero-Pol tool are as follows:

$$p = \frac{RT}{V - b} - \frac{a(T)}{V^2 - 2bV - V^2} \quad (1)$$

The basic equation is the Peng-Robinson equation of state (Peng and Robinson, 1980). It relates the Pressure P [Pa] to the temperature T [K] and the molar volume V [m³/mol]. R [J/mol.K] is the ideal gas constant. The covolume of the mixture b is defined from the covolumes of each pure component b_i and the different mole fractions x_i :

$$b_i = 0.07780 \frac{RT_c}{P_c} \quad (2)$$

$$b = \sum_i x_i b_i \quad (3)$$

For a mixture including components i and j and water, Soreide and Whitson proposed two different EOS constants $a(T)$. One is determined for the non-aqueous phase (a^{NA}) and the other for the aqueous phase (a^{AQ}). These are expressed as a function of the respective phase binary interaction parameters k_{ij}^{NA} and k_{ij}^{AQ} , and mole fractions x_i .

$$a^{NA} = \sum_i \sum_j x_i x_j (a_i a_j)^{\frac{1}{2}} (1 - k_{ij}^{NA}) \quad (4)$$

$$a^{AQ} = \sum_i \sum_j x_i x_j (a_i a_j)^{\frac{1}{2}} (1 - k_{ij}^{AQ}) \quad (5)$$

The attraction terms for pure component a_i are defined as follows:

$$a_i = 0.45724 \frac{R^2 T_{ci}^2}{P_{ci}} \alpha(T_{ri}) \quad (6)$$

The parameter $\alpha(T_{ri})$ is defined for hydrocarbons and for pure water:

$$\alpha(T_r)_{hydrocarbon} = [1 + (0.37464 + 1.5422\omega_i - 0.307\omega_i)(1 - \sqrt{T_{ri}})]^2 \quad (7)$$

$$\alpha(T_r)_{pure\ water} = [1 + 0.4530(1 - T_{ri}) + 0.0034(T_{ri}^{-3})]^2 \quad (8)$$

Furthermore, the binary interaction parameters k_{ij}^{AQ} and k_{ij}^{NA} are empirical correlations depending on the temperature, and the critical temperature of component i (i = hydrocarbon components and j = water). A default value of k_{ij}^{NA} equal to 0.5 is used for hydrocarbon and water binaries in non-aqueous phase. k_{ij}^{AQ} is calculated with the following expressions:

$$k_{ij\ for\ pure\ water}^{AQ} = A + BT_{ri} + CT_{ri}^2 \quad (9)$$

The constants A , B and C are determined to reproduce the experimental data for solubility and water content of the non-aqueous phases. The determination of these parameters is based on the values of Henry's constant of the components in pure water and the fugacity coefficient of components infinitely diluted in water. Thus, it is possible to include a specific binary interaction parameter between water and a new component added to Transfero-pol. This method is an extension of the Soreide and Whiston model.

This extension of the Soreide and Whiston model was implemented to calculate phase equilibria between an aqueous phase and one or two hydrocarbon phases (liquid and gas). It also makes it possible to calculate the distribution of a mixture of components in these different phases according to the pressure and temperature. Transfero-Pol can therefore be used to study the distribution of hydrocarbon pollutants in the aqueous, gaseous and non-aqueous liquid (NAPL) phases in the soil. It should be noted that no adsorbed phase is taken into account in the equations used by Transfero-Pol.

2. 2. Transfero-Pol input and output data

The input data of the thermodynamic tool Transfero-Pol are the overall mole fractions of the considered components and the temperature, the pressure being the atmospheric one for most of the applications. However, in general, laboratory results for contaminated soil samples are given in total mass concentration for each pollutant in the soil. Thus, to perform contaminated sites and soils analysis with

Transfero-Pol, it is necessary to convert the mass concentrations of pollutants in the soil into overall mole fractions. The conversion of the data is done by the following relations:

$$z_i = \frac{n_i^{soil}}{\sum_i n_i^{soil} = n_{total}} \quad (10)$$

$$n_i^{soil} = \frac{C_i^{soil} \times m_{soil}}{M_i} \quad (11)$$

where z_i is the overall mole fraction of component i in the mixture or in the contaminated soil; n_i^{soil} [mol] is the amount of substance i in the soil; C_i^{soil} [mg/kg] is the total mass concentration of component i in the soil; M_i [g/mol or mg/mol or Kg/mol] is the component molecular weight and m_{soil} [Kg] is the mass of contaminated soil sample. For all components i , the sum of overall mole fractions must have a value equal to 1:

$$\sum_i z_i = 1 \quad (12)$$

In situ measurements in contaminated sites or laboratory results for contaminated soil samples can give the concentrations of pollutants in the different soil phases at a given time. These concentrations can be converted into mole fractions and used with Transfero-Pol to study the evolution of the distribution of pollutants in the different phases of the soil as a function of temperature and pressure. The following relationships are used to convert the data:

$$n_i^{fluid\ phase\ (water, gas\ or\ NAPL)} = \frac{C_i^{fluid\ phase} \times V_{soil} \times \varphi_{soil} \times Sat_{phase}}{M_i} \quad (13)$$

$$\sum_i n_i^{soil} = n_{total} \quad (14)$$

$$x_i^{phase} = \frac{n_i^{phase}}{\sum_i n_i^{Phase} = n_{total}^{Phase}} \quad (15)$$

$$\begin{aligned}
z_i &= \frac{n_{gaseous\ phase}}{n_{total}} x_i^{gaseous\ phase} \\
&+ \frac{n_{aqueous\ phase}}{n_{total}} x_i^{aqueous\ phase} \\
&+ \frac{n_{napl}}{n_{total}} x_i^{napl}
\end{aligned} \quad (16)$$

where $n_i^{fluid\ phase}$ [mol] is the amount of substance i in the considered phase (water / aqueous phase, gas and NAPL); $C_i^{fluid\ phase}$ [Kg/m³] is the concentration of component i in the considered phase ; V_{soil} [m³] is the volume of contaminated soil sample; ϕ_{soil} is the total porosity of contaminated soil sample; x_i^{phase} is the mole fraction of component i in the considered phase and Sat_{phase} [adim] is the saturation of the phase considered, defined as:

$$Sat_{phase} = \frac{V_{phase}}{V_{water} + V_{gas} + V_{NAPL}} \quad (17)$$

with V_{phase} the volume of the phase in the pores.

We have:

$$Sat_{water} + Sat_{gas} + Sat_{NAPL} = 1 \quad (18)$$

Furthermore, to take into account the volumetric water content θ_{water} and the volumetric air content θ_{air} in the soil, the component water (H₂O) and air (Nitrogen N₂ and Oxygen O₂) must be added systematically to the list of components in the mixture to be treated with Transfero-Pol. To determine the mole fractions of water and air in the soil, their amount of substance in the soil must be calculated. The following equations can be used:

$$n_{H2O} = \frac{\theta_{water} \times \frac{m_{soil}}{\rho_{soil}} \times \rho_{water}}{M_{H2O}} \quad (19)$$

$$n_{air} = \frac{\theta_{air} \times \frac{m_{soil}}{\rho_{soil}} \times \rho_{air}}{M_{air}} \quad (20)$$

where n_{H2O} [mol] and n_{air} [mol] are respectively the amount of water (H₂O) and air substances in the soil; ρ_{soil} [Kg/m³] is the density of soil and ρ_{water} [Kg/m³] is the density of water and ρ_{air} [Kg/m³] is the density of air. The amount of air is divided between N₂ and O₂. Knowing that air contains about 78% of N₂ and 22% of

O₂ in moles, we can obtain n_{N2} [mol] and n_{O2} [mol] in the soil:

$$n_{nitrogen} = 78\% \times n_{air} \quad (21)$$

$$n_{oxygen} = 22\% \times n_{air} \quad (22)$$

It should be noted that Transfero-Pol output data are the mole fractions of each component of the initial mixture in the different phases of the soil: aqueous phase, gas phase and non-aqueous phase (NAPL).

3. Case study

3.1. Presentation of the case study

An example of a case study has been used by the company BURGEAP to evaluate the results of the OREOS software. In this section, the same case study was used to compare the results of Transfero-Pol and OREOS. Indeed, OREOS is a software developed in the years 2012-2015 by the company BURGEAP and by ADEME (Agence de l'Environnement et de la Maitrise de l'Energie, France). It calculates the distribution of organic pollutants in the different phases of the soil from their total mass concentrations measured in a contaminated soil sample (Chastanet et al, 2012). BURGEAP has used a case study with petroleum hydrocarbon data taken from Mariner et al. (1997) to test the OREOS software. The same data were used to compare the results of OREOS and Transfero-Pol.

This case study considers a soil sample contaminated with C₆ through C₉ n -aliphatic hydrocarbons (hexane, heptane, octane, nonane). In the soil sample, each component has a same total mass concentration value that is equal to 250 mg.kg⁻¹. The physical and chemical properties of the hydrocarbon components and the soil sample are given below in Tables 1, 2 and 3.

Table 1. Physical and chemical properties data used in the case study (from Chastanet et al, 2012).

Component i	Mole mass M _{wi} (g/mol)	Mass Volume ρ_i [kg/L]	Solubility S _i (mg/l)
Hexane	86.07	0.66	12.31
Heptane	100.2	0.68	3.06
Octane	114.22	0.7	0.68
Nonane	128.26	0.72	0.47

Table 2. Physical and chemical properties data used in the case study (from Chastanet et al, 2012).

Component i	Henry's constant K _{Hi}	Carbon partition coefficient organic/water K _{oci} (mL/g)	Total component concentration in soil C _i (mg/kg)
Hexane	46.49	6025.60	250
Heptane	63.59	22908.68	250
Octane	95.74	77624.71	250
Nonane	45.80	263026.8	250

Table 3. Soil Sample Data

Organic carbon content f _{oc}	0.01
Volumetric water content Φ _w	0.08
Total porosity	0.4
Temperature	25°C

From these data, the OREOS software has calculated the distribution of components in the different phases of the soil sample. OREOS results have given the mass concentrations of each compound in the aqueous phase, gas phase, NAPL phase and adsorbed phase. For a direct comparison with Transfero-Pol results, the mass concentrations given by OREOS were converted to mole fractions and the adsorbed phase was not considered.

To perform the same thermodynamic calculation with Transfero-Pol, the overall mole fractions (z_i) of each component in the soil were calculated using the equations described in Section 2.2. The results are presented in Table 4.

Table 4: Transfero-Pol input data for the case study.

Component i in the mixture	Overall mole fraction (z _i) in soil
Water (H ₂ O)	0.99598
Nitrogen (N ₂)	0.00231
Oxygen (O ₂)	0.00065
Hexane	0.00033
Heptane	0.00027
Octane	0.00029
Nonane	0.00015

From these overall mole fractions (z_i), Transfero-Pol was used to calculate the distribution of the

components in the different phases of the soil. Transfero-Pol and OREOS results were then compared as reported in the following section.

3. 2. Comparison of OREOS and Transfero-Pol results

To compare the results of OREOS and Transfero-Pol, only the hydrocarbon components must be considered, i.e. Hexane, Heptane, Octane and Nonane. The computed mole fractions of each pollutant in each phase are summarized in Tables 5, 6 and 7. These mole fractions are graphically represented in Figures 1, 2 and 3. This representation makes it easier to read and compare OREOS and Transfero-Pol results.

Table 5. Comparison of Transfero-Pol and OREOS results

Component i	Mole fraction (w _i) in the aqueous phase	
	Transfero-Pol	OREOS
Hexane	0.785	0.767
Heptane	0.157	0.178
Octane	0.049	0.042
Nonane	0.008	0.014

Table 6. Comparison of Transfero-Pol and OREOS results

Component i	Mole fraction (x _i) in NAPL phase	
	Transfero-Pol	OREOS
Hexane	0.187	0.246
Heptane	0.266	0.266
Octane	0.355	0.319
Nonane	0.192	0.169

Table 7. Comparison of Transfero-Pol and OREOS results

Component i	Mole fraction (y _i) in the gas phase	
	Transfero-Pol	OREOS
Hexane	0.670	0.692
Heptane	0.238	0.219
Octane	0.079	0.077
Nonane	0.014	0.012

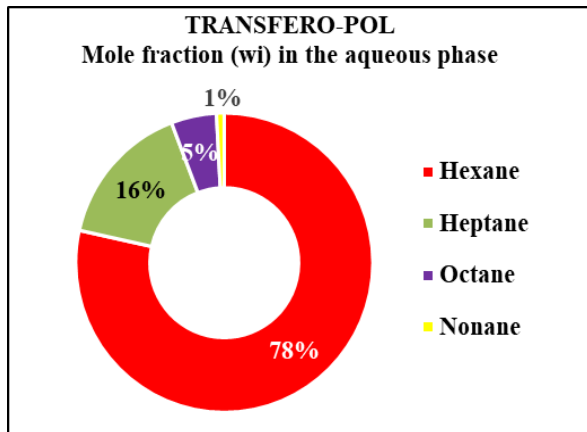
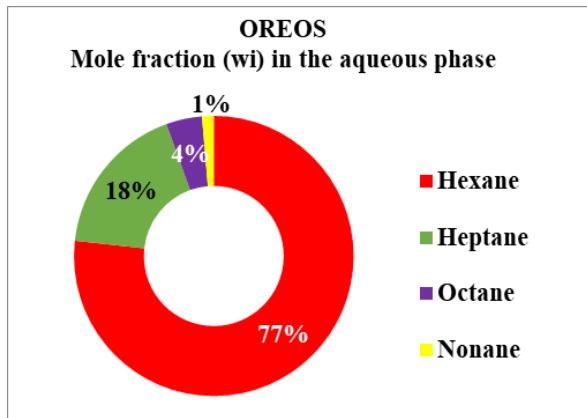


Figure 1. Graphic representation of OREOS and Transfero-Pol results (aqueous phase)

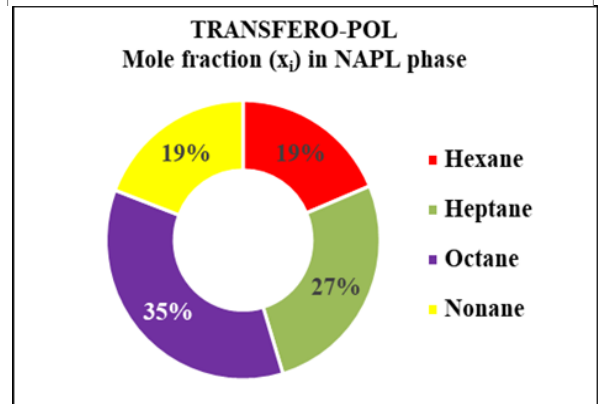
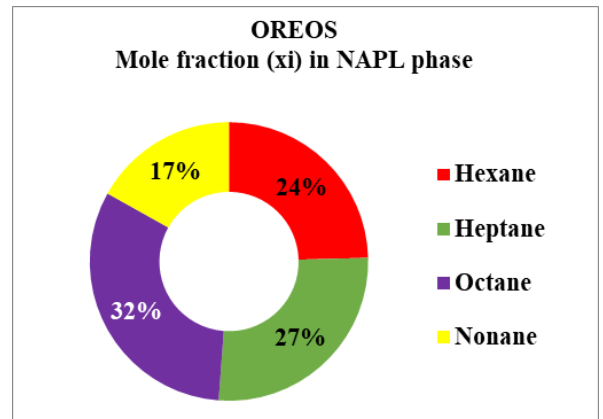


Figure 2. Graphic representation of OREOS and Transfero-Pol results (NAPL phase)

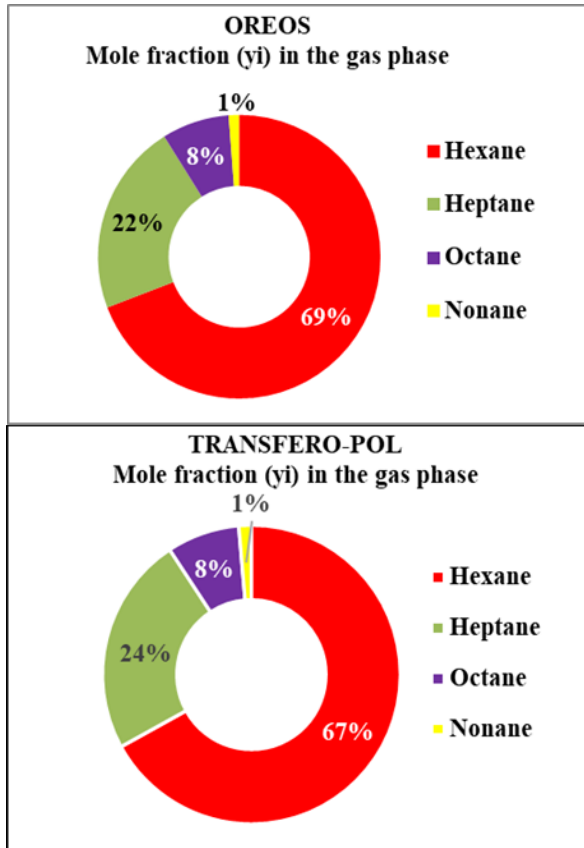


Figure 3. Graphic representation of OREOS and Transfero-Pol results (gas phase)

In the water phase, OREOS and Transfero-Pol results are 1% different for Hexane and Nonane and 2% different for Heptane. In the gas phase, the results of the two softwares show a difference of 2% for Hexane and Heptane. Finally, in the NAPL phase, OREOS and Transfero-Pol results are 5% different for Hexane, 3% for Octane and 2% for Nonane.

For a temperature at 25°C, the Henry's constants used to calibrate Transfero-Pol and to run OREOS are presented in Table 8. These Henry's constants are different. Thus, the differences observed in the composition of the aqueous, gaseous and NAPL phases are partially caused by these discrepancies. Furthermore, Transfero-Pol and OREOS use different calculation methods. Transfero-Pol is based on the computation of Equation of State while OREOS uses the laws of interaction and exchange between the different soil phases based on parameters for each component such as its solubility and its Henry's constant.

Table 8: Henry's constants used by Transfero-Pol for its calibration and by OREOS for its computation

Component i	Henry's constant K_H [bar]	
	Transfero-Pol	OREOS
Hexane	0.85	0.90
Heptane	1.51	1.23
Octane	1.60	1.86
Nonane	1.60	0.88

4. Conclusion

This paper presents a numerical tool, called Transfero-Pol, that aims at predicting the long-term evolution of hydrocarbons pollutants in contaminated soils. This tool is based on the computations of vapor-liquid thermodynamic equilibrium that provide the distribution of pollutants among the different phases. The three phases considered here are the NAPL, aqueous and gaseous phases. It is expected that the pollutants remaining in the NAPL phase will not move while the pollutants migrating to the aqueous and gaseous phases will follow their phase motion and therefore create a sanitary risk, for instance by contaminating the groundwater or by being inhaled as vapor. The calculation inputs of the tool are based on laboratory analysis of a contaminated soil sample to determine its physical and chemical characteristics, with measurements of the total concentrations of each pollutant in the soil sample. From this information, the overall mole fractions of each pollutant in the soil can be derived and Transfero-Pol can then calculate the distribution in mole fractions of the pollutants in the aqueous, gas and NAPL phases in the soil.

In this paper a case study was used to assess the performances of Transfero-Pol by comparing it with results from a commercial software. The results show that Transfero-Pol results are comparable to the results of the OREOS commercial software. The information provided by Transfero-Pol can therefore be used for the diagnosis of contaminated soils and for the selection of suitable soil remediation techniques.

References

- [1] BASOL database website (2020): <https://www.data.gouv.fr/fr/datasets/base-des-sols-pollues/#description>
- [2] Mariner P. E., Minquan J. Richard E. J., "An algorithm for the estimation of NAPL saturation and

- composition from typical soil chemical analyses”, Ground Water Monitoring and Remediation., pp.122-129, Spring 1997.
- [3] Rucker G. G., 2003. Method and software to determine and quantify Non-Aqueous Phase Liquids in Environmental Media. Calculation Cover Sheet, Savannah River Site, pp. 42
- [4] Chastanet J., Kaskassian S., Côme J.-M. (2012, December 5). “Développement d’un outil de calcul de la répartition de la phase organique dans les sols”. Online available: <https://www.ademe.fr/sites/default/files/assets/documents/oreos-outil-calcul-phase-organique-sols-2012.pdf>
- [5] Soreide, I., and Whitson, C., “Peng - Robinson predictions for hydrocarbons, CO₂, N₂, H₂S with pure water and NaCl brine,” Fluid. Phase. Equil., 77, pp. 217-240, 1992.
- [6] Vidonish J. E., Zygourakis K., Masiello C. A., Sabadell G., Alvarez P. JJ., “Thermal Treatment of Hydrocarbon-Impacted Soils: A Review of Technology Innovation for Sustainable Remediation”, Engineering, pp. 426-437, Volume 2, Issue 4, 2016.
- [7] Xie Q., Mumford K. G., Kueper B. H., Zhao C., “A numerical model for estimating the removal of volatile organic compounds in laboratory-scale treatability tests for thermal treatment of NAPL-impacted soils”, Journal of Contaminant Hydrology, Volume 226, 2019
- [8] Peng, D. and Robinson, D., “*Two and three phase equilibrium calculations for coal gasification and related processes*,” In S.A. Newman (Ed), *Thermodynamics of aqueous systems with industrial applications.*, ACS symposium Ser., pp. 393-414, 1980.