



HAL
open science

Study on the impact of uncertain design parameters on the performances of a permanent magnet-assisted synchronous reluctance motor

Adan Reyes Reyes, André Nasr, Delphine Sinoquet, S Hlioui

► To cite this version:

Adan Reyes Reyes, André Nasr, Delphine Sinoquet, S Hlioui. Study on the impact of uncertain design parameters on the performances of a permanent magnet-assisted synchronous reluctance motor. Science and Technology for Energy Transition, 2024, 79, pp.13. 10.2516/stet/2024008 . hal-04504499

HAL Id: hal-04504499

<https://ifp.hal.science/hal-04504499v1>

Submitted on 14 Mar 2024

HAL is a multi-disciplinary open access archive for the deposit and dissemination of scientific research documents, whether they are published or not. The documents may come from teaching and research institutions in France or abroad, or from public or private research centers.

L'archive ouverte pluridisciplinaire **HAL**, est destinée au dépôt et à la diffusion de documents scientifiques de niveau recherche, publiés ou non, émanant des établissements d'enseignement et de recherche français ou étrangers, des laboratoires publics ou privés.



Distributed under a Creative Commons Attribution 4.0 International License

Study on the impact of uncertain design parameters on the performances of a permanent magnet-assisted synchronous reluctance motor

Adán Reyes Reyes^{1,2,*}, André Nasr¹, Delphine Sinoquet¹ , and Sami Hlioui^{2,3}

¹ IFP Energies nouvelles, Institut Carnot IFPEN Transports Energie, 1 et 4 avenue de Bois-Préau, 92852 Rueil-Malmaison, France

² Paris Saclay University, CNRS, SATIE, Gif-sur-Yvette, France

³ CY Cergy Paris University, CNRS, SATIE, Cergy, France

Received: 15 September 2023 / Accepted: 29 January 2024

Abstract. In this paper, deterministic and robust design optimizations of a permanent magnet-assisted synchronous reluctance motor were performed to study the impact of different uncertain input parameters on the design. These optimizations were carried out using a surrogate model based on 2-D finite element simulations. Different robust optimizations considering geometric and magnetic uncertain parameters were compared to the deterministic optimization. It was noticed that both geometrical and magnetic properties tolerances greatly impact the machines' mean torque and torque ripple, whereas the magnetic properties tolerances had a more significant impact on the mean torque. In such a case, robust optimization is essential to find optimal and robust electric motor designs.

Keywords: Synchronous machines, Robust design optimization, Manufacturing uncertainties, Surrogate models, Finite element analysis.

1 Introduction

With the increasing concerns over climate change, many measures have been adopted to reduce greenhouse gas emissions. For transportation systems, in order to replace internal combustion engine vehicles, Electric and Hybrid Vehicles (EV, HEV) have been intensively developed. In these vehicles, the electrical machine is one of their main components.

Among the different types of electrical machines used in electric vehicles, Permanent Magnet Assisted Synchronous Reluctance Machines (PMaSynRelM) are one of the most used machines nowadays [1–3]. Unlike Surface-Mounted Permanent Magnet Synchronous Machines (SMPMSM), PMaSynRelM exploits two types of torque: hybrid torque generated using permanent magnets and, reluctance torque which makes a profit of the machine's saliency. Since SMPMSMs only generate hybrid torque, they depend solely on permanent magnets to achieve the required performances. For all these machines, optimization is often used to find the best design respecting all the required specifications.

Many optimization methodologies applied to electrical machines can be found in the literature [4–7]. Most of these methodologies can be described as deterministic since they do not consider any uncertainties in the input parameters. However, in practice, there are many discrepancies between the nominal (obtained *via* data sheets) and real (measurements) values of these parameters. These differences can be caused by manufacturing and assembly tolerances in the prototype as well as by the lack of precision in the magnetic properties of used materials. These variabilities can lead to degraded performances compared to the nominal performances simulated in the design phase. To reduce such deviations, the parameter uncertainties should be considered in the optimization procedure.

In opposition to deterministic optimization, robust optimization considers two types of input parameters: certain parameters also known as controllable parameters, and uncertain parameters. Controllable parameters are the same ones used in deterministic optimization whereas uncertain parameters are specific to robust optimization techniques. This type of parameter can take varying values due to the associated uncertainties: it is then modeled by a random variable and an associated Probability Distribution Function (PDF). The presence of random input variables for the simulator leads to random output variables and

* Corresponding author: adan.reyes-reyes@ifpen.fr

then, random objective and constraint functions. Various formulations of the resulting optimization problem are proposed in the literature [8–10] based on the expectation, probability, or quantiles of these random variables.

Reliability-Based Design Optimization (RBDO) is a method used to obtain optimal and safe designs in the sense that the outputs of certain functions are inside a security domain, described by constraints. A robust or reliable design has therefore a high probability of respecting these constraints. Examples of this approach can be found in [11].

Worst-case optimization considers the extreme values as objective functions and/or constraints *i.e.*, the maximum or minimum value of the outputs caused by the uncertainty propagation [12].

There is another very common formulation that was also adopted in this work: Robust Design Optimization (RDO). In this methodology, the expectation (average) of the objective function is optimized. To limit extreme values, a second objective based on the variances of the objective function can be added [13].

The computation of robustness metrics such as expectations or variances requires a large sample of the uncertain input variables and thus a large number of simulations. To limit this high computational cost, especially with the use of finite element simulations, meta-modeling techniques coupled with the design of experiments are used to replace the costly simulations with predictions using the resulting surrogate models [14].

We will present in this paper a study on the impact of uncertain design parameters on the performances of a PMaSynRelM motor. It is a 3-phase 10-pole 60-slot PMaSynRelM with a Machaon rotor structure (Fig. 1). It has an outer stator diameter of 220 mm and an active length of 200 mm. Each pole has 3 flux barriers and 7 PMs. This machine topology will be used to compare the results of deterministic and robust optimizations in terms of robustness. To do so, techniques like Design Of Experiments (DOE), Finite Element Method (FEM) surrogate modeling, sensitivity analysis, quasi-Monte Carlo methods, and optimization algorithms were used.

The remainder of this paper is as follows: We will first introduce the surrogate models-based methodology used in this work. Next, we will analyze the obtained results *via* deterministic and robust formulation optimizations. Finally, we will verify some solutions' performances obtained by the metamodels through Finite Element simulations.

2 Optimization workflow

As mentioned before, we will perform in this paper deterministic and robust optimizations in order to study the sensitivity of a PMaSynRelM machine to design parameter uncertainties. Figure 2 shows the design parameters for the stator and the rotor considering one layer. Table 1 lists all the design parameters to be used in the optimizations as well as their lower and upper bounds. The manufacturing tolerance is also given.

Geometrical parameters are not the only design parameters that can be uncertain. The characteristics of the

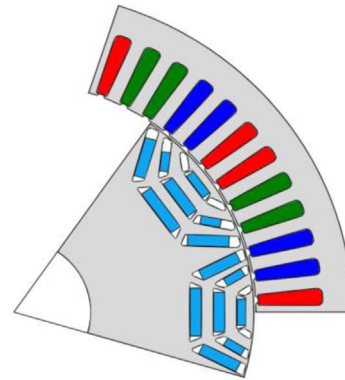


Fig. 1. Geometry of the PMaSynRelM motor.

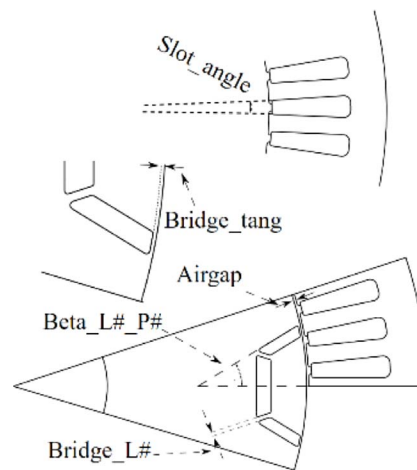


Fig. 2. Design parameters for one layer (# is the number of the layer).

magnetic materials used to build a machine, like permanent magnets and electrical steel, can also present some uncertainties and their characteristics can deviate from those given in the datasheet.

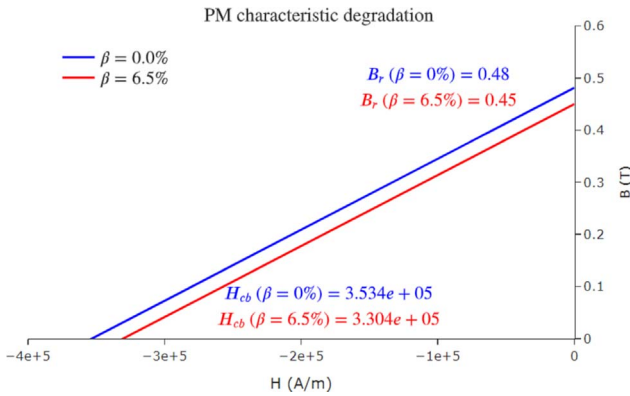
The permanent magnet model used in our electromagnetic simulations is a linear model defined by two quantities: B_r which is the remanent induction and H_{cb} which is the coercitive magnetic field (Fig. 3). We will consider that the values of B_r and H_{cb} can vary between their nominal characteristics and, in the worst case, lower characteristics representing a 6.5% degradation. A coefficient β between 0% and 6.5% will be used as a random variable describing the level of degradation in the robust optimizations.

As for the B(H) characteristic, the degradation will be limited to its “knee” part. A random variable α between 0 (representing fully degraded characteristic) and 1 (nominal characteristic) will be used to define the degradation level of the B(H) curve. At maximum degradation ($\alpha = 0$), the induction level is reduced by 25%. Figure 4 shows a comparison between the initial and degraded B(H) curves.

Figure 5 shows the workflow used to carry out the optimizations. At first, a DOE was built with the upper and lower bounds of the input parameters shown in Table 1

Table 1. Optimization variables.

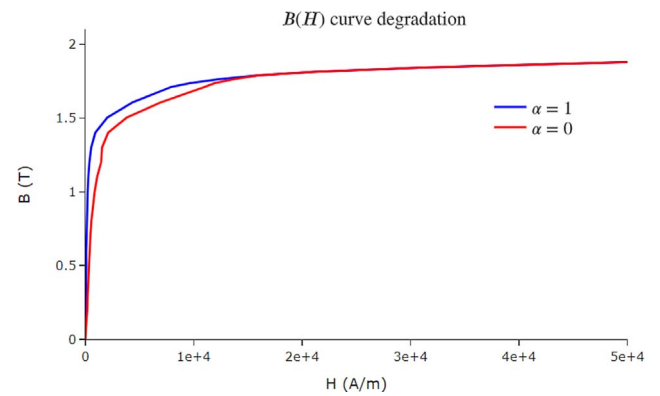
Input parameter	Lower bound x_l	Upper bound x_u	Manufacturing tolerance
Slot_angle	2.47°	3.27°	±0.1°
Beta_L1_P1	27.03°	29.66°	±0.33°
Beta_L1_P2	37.03°	39.66°	±0.33°
Beta_L2_P1	31.03°	33.66°	±0.33°
Beta_L2_P2	47.03°	49.66°	±0.33°
Beta_L3_P1	33.7°	37°	±0.33°
Beta_L3_P2	59.7°	63°	±0.33°
Airgap	0.55 mm	0.65 mm	±0.03 mm
Bridge_L1	2.6 mm	2.98 mm	±0.05 mm
Bridge_L2	0.9 mm	1.18 mm	±0.05 mm
Bridge_L3	0.5 mm	0.62 mm	±0.03 mm
Bridge_tang	0.4 mm	0.6 mm	±0.05 mm

**Fig. 3.** Nominal and degraded PM characteristic.

to fit a surrogate model for each of the considered objective functions: the mean torque and torque ripple. These two quantities are computed using the finite element method with the open-source software FEMM/XFEMM [15]. Different simulations at a fixed maximum current (600 A) and for a range of the control angle (between 0° and 90°) were launched. The optimal control angle (giving maximum torque) was found, and the mean torque and torque ripple were calculated. The built surrogate models were used to perform a global sensitivity analysis to detect the most impacting parameters on the objective functions. This analysis will allow us to limit the number of parameters considered as uncertain. At last, and after performing the meta-model-based deterministic and robust optimizations, FEM simulations were carried out to verify the results.

2.1 Surrogate models

To reduce computation time, surrogate models have been built for each of the objective functions. To build such models, there are three steps to follow: build a DOE, train the metamodel, and check its predictivity with a test set. The chosen DOE is a maximin Latin Hypercube Sampling (LHS) which is a technique that covers well the search

**Fig. 4.** Nominal and degraded B(H) curve.

space while preserving good projection properties [16]. This DOE was built with 234 points using the bounds described in Table 1. As for the surrogate model, it is a universal Kriging with a linear trend function. For mean torque, a tensorized Matérn 5/2 covariance function has given the best predictivity. As for Torque ripple, a tensorized absolute value exponential kernel was used since the Torque ripple function is not that smooth. Kriging was chosen as a metamodel since it is very good at learning nonlinear objective functions and has demonstrated good performances in electrical machine optimization [17]. Finally, to evaluate the accuracy of the metamodel, a Normalized Root Mean Square Error (NRMSE) was computed on a validation test set:

$$\text{NRSME} = \frac{\|y_{\text{real}} - y_{\text{pred}}\|}{\|y_{\text{real}}\|} \times 100\% \quad (1)$$

zero indicates a good model fit. The obtained NRSME of the Kriging model for mean torque is 0.2% and for torque ripple is 8%. These results were obtained with a train and test sets composed of 175 and 59 samples, respectively. Torque ripple depends not only on mean torque but also on torque amplitude which makes this function more

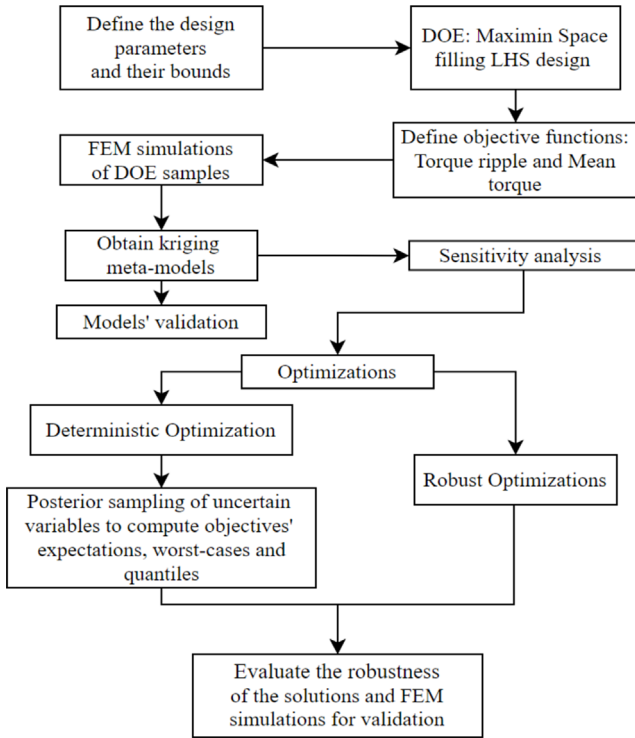


Fig. 5. Optimization workflow.

difficult to model than mean torque. We consider those metamodels sufficiently accurate for performing the sensitivity analysis and the optimization procedures.

2.2 Sensitivity analysis

For the robust optimizations, we have decided not to consider all the geometric parameters given before as uncertain parameters. Only the most impacting ones will be considered. To do so, a sensitivity analysis will be performed [18]. For this work, the Sobol Indices were chosen as they measure the global impact of the input variables on the output functions. Such indices represent the amount (or percentage) of the total output variance attributable to each subset of input variables. For instance, in the simplest case of one output variable Y and two inputs X_1 and X_2 , we find three factors causing the total variance of Y : due to the variation of X_1 alone, due to the variation of X_2 alone, and due to the variation of X_1 and X_2 simultaneously. Dividing these three quantities by the total variance of Y , we can obtain three percentages that can be directly considered as sensitivity measures. The largest is the value of these indices, the largest is their importance. The commonly used ones are the first order indices (S_i) representing the contribution to the variance of Y due to the variation uniquely of X_i , and the total indices ($S_{TOTAL,i}$) representing the contribution to the variance of Y due to the variation of X_i and all its interactions with the remaining input variables:

$$S_i = \frac{VAR_{X_i}(E_{X_{\sim i}}[Y|X_i])}{VAR(Y)}, \quad (2)$$

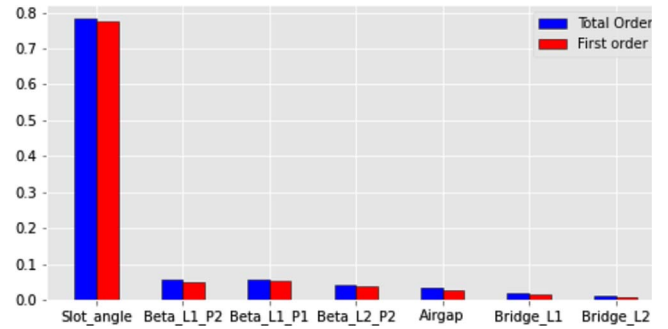


Fig. 6. Mean torque Sobol' indices.

$$S_{TOTAL_i} = \frac{E_{X_{\sim i}}[VAR_{X_i}(Y|X_{\sim i})]}{VAR(Y)}, \quad (3)$$

where $X_{\sim i} = X_1, \dots, X_{i-1}, X_{i+1}, \dots, X_{N_x}$ and N_x is the number of optimization parameters. We computed the indices using the Kriging surrogate models. The results of the sensitivity analysis applied to mean torque and torque ripple are presented in Figures 6 and 7. Only the most important geometrical inputs are displayed for better visibility. It was found that the stator slot width opening angle (Slot_angle) and the flux barrier opening angles for barriers 1 and 2 (Beta_L1_P1, Beta_L1_P2, Beta_L2_P1, and Beta_L2_P2) have the biggest impacts on the mean torque as well as on the torque ripple. We can also see in Figure 6 that the total order Sobol indices for torque ripple are higher than the first-order ones. This means that torque ripple is more sensitive to the interaction between the variables (Beta_L1_P1 and Beta_L1_P2 for example) than to one variable alone. This is not the case for the mean torque, where the predominant indices are first-order ones.

Finally, the most impacting variables 5 parameters: Slot_angle, Beta_L1_P1, Beta_L1_P2, Beta_L2_P1, and Beta_L2_P2 will be considered as uncertain variables in the robust optimizations. The dispersion of these variables will be then integrated into the robust optimizations by considering a perturbation vector U .

2.3 Robustness metrics

To perform a robust optimization, one or several robustness measures can be used as objectives or constraints. In this section, we will recall some of them. Consider Figure 8. This figure shows a possible Probability Density Function (PDF) of the torque ripple considering perturbations on one (or some) input design parameters. The alpha-quantile q_α is the output value for which a given sample has a probability equal to α of being less than or equal to q_α . For example, in Figure 8, the 10% quantile ($q_{10\%}$) has a torque ripple value around 5.5%. This means that 10% of the considered samples have a torque ripple less than or equal to 5.5%. The expectation (E) is equal to the average value of the output variable and would coincide with the 50% quantile in a perfectly symmetric PDF. We can quantify how spread out the output values are by means of the Standard

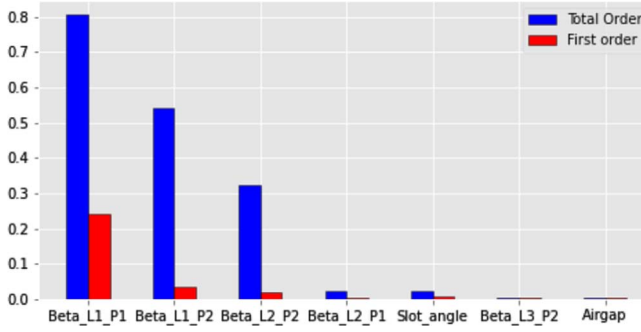


Fig. 7. Torque ripple Sobol' indices.

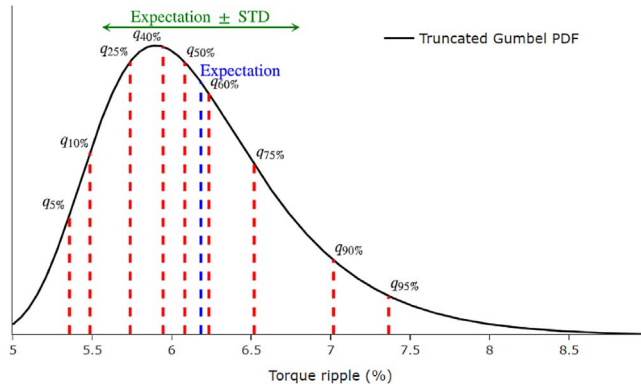


Fig. 8. Example of a torque ripple PDF.

Deviation (STD), which measures the mean square dispersion around the expectation.

3 Deterministic and robust optimizations

We will present in this section the results of different optimizations: a deterministic and a robust optimization. For the deterministic optimization problem, we have:

$$\min_{x \in X} [f_1(x), f_2(x)], \quad (4)$$

where f_1 is the opposite of the mean torque (in order to maximize it) and f_2 the torque ripple; X is the controllable parameters space defined in Table 1. For the robust optimization problems, two formulations have been considered:

– Expectations optimization:

$$\min_{x \in X} [E_U[f_1(x + U)], E_U[f_2(x + U)]]. \quad (5)$$

– Worst-case optimization:

$$\min_{x \in X} [\max_{u \in \Omega} f_1(x + u), \max_{u \in \Omega} f_2(x + u)], \quad (6)$$

$$\text{where } \Omega = [-u_{u1}, u_{u1}] \times \cdots \times [-u_{uNx}, u_{uNx}]. \quad (7)$$

u_{uj} is the manufacturing tolerance of the parameter number j , and x_j and x_{uj} are the lower and upper bounds for the

optimization variable x_j , respectively. The tolerance for each geometrical parameter is given in Table 1. Based on the sensitivity study in the previous section, only 5 geometrical parameters will be considered as uncertain. Their uncertainties were considered following uniform distributions, *i.e.*, $U_j \sim Unif(-u_{uj}, u_{uj})$. For parameters with no considered uncertainties, u_u is simply equal to 0.

The goal of the first robust formulation is to optimize the mean torque and torque ripple's expectations in a Pareto sense. In the worst-case formulation, the objective is to limit the worst possible value of the mean torque and torque ripple caused by uncertainties (equivalent to $q_{100\%}$ and $q_{0\%}$ respectively). By adopting such a formulation, the designer can be sure that all the manufactured machines will exceed the performances found on the Pareto front. On the other hand, a formulation using expectations does not guarantee that.

To solve these optimization problems, the genetic algorithm NSGA 2 was used [19]. This algorithm has shown good performances in other studies of electrical machine optimization as in [20]. We used a DOE maximin LHS to compute samples of $x + U$ to calculate the objective functions' expectations with a quasi-Monte Carlo method. When it comes to the Worst-case formulation, we have two options: computing samples of $x + U$ and taking the maximum value of these samples as an estimator of $\max_{u \in \Omega} f(x + u)$ or obtaining the absolute maximum value with an optimization algorithm. In this work, the last solution was adopted using a Particle Swarm Optimization (PSO) [21] algorithm for the embedded mono-objective optimizations. By doing so, we will obtain more accurate worst-case estimates.

To study the impact of the two different types of uncertainties (related to geometrical parameters and material properties) on the performances of the PMSyn-RelM machine, we will perform in the following sections two groups of optimizations: the first one will only consider geometrical parameters as uncertain parameters (U_g) while the second one will also consider the magnetic material characteristics as uncertain as described before (U_g, U_m).

3.1 Robust optimizations considering uncertainties on geometrical parameters

Figure 9 shows a comparison between the deterministic (blue) and the expectations optimization (red) Pareto fronts. The expected performances of the deterministic Pareto front have been reevaluated (pink): The design variables were perturbed by adding sampled values of the uncertain variables. These expected values represent the average mean torque and average torque ripple for each machine obtained by the deterministic Pareto optimization considering a posteriori uncertainty on the input parameters. As we can notice, a deterministic optimization does not guarantee a robust design: For the same average mean torque, the average torque ripple of a batch of machines issued from the deterministic optimization (pink) shows higher values than that of a batch of machines issued from the robust optimization (red).

The Pareto front of the worst-case optimization (green) is presented in Figure 10. As in Figure 9, the deterministic

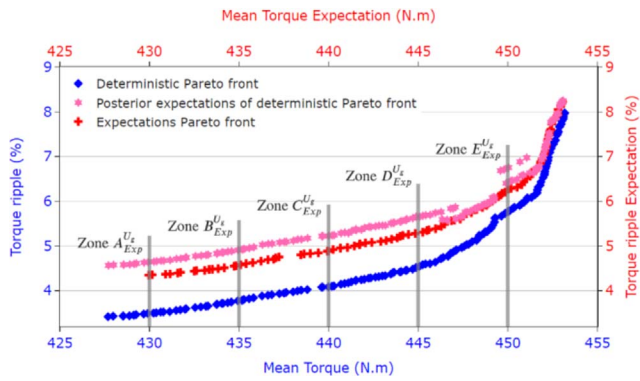


Fig. 9. Pareto fronts obtained by deterministic (front in blue) and expectations obtained by posterior perturbations in pink), and expectations optimization (red) where uncertainties come from geometrical perturbations U_g . Dark gray zones highlight points with similar mean torque expectation values.

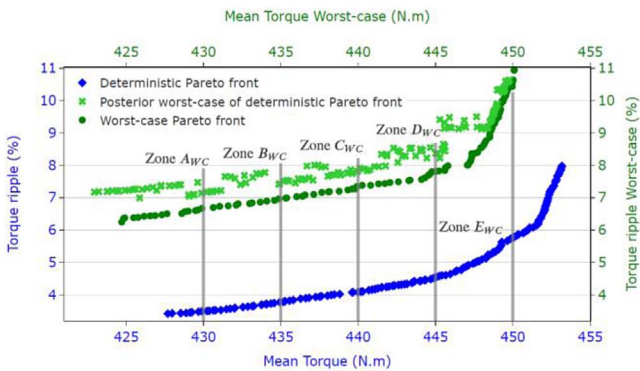


Fig. 10. Pareto fronts obtained by deterministic (front in blue) and worst-cases obtained by posterior perturbations in light green), and worst-cases optimization (green) where uncertainties come from geometrical perturbations U_g . Dark gray zones highlight points with similar mean torque worst-case values.

Pareto front was also added (blue). The worst-case performances of the deterministic Pareto front have been evaluated (light green) thanks to a posteriori uncertainty on the input parameters and PSO maximization. Once again, these results show the importance of robust optimization in limiting the performance degradation that a sample of machines can have.

To go deeper into this analysis, we empirically compared the distribution of different designs. For this purpose, we show in Figures 11 and 12 boxplots of a subset of points selected from the deterministic and robust Pareto fronts shown in Figures 9 and 10, respectively. Each pair of boxplots in Figure 11 represents a comparison of the distribution of torque ripple values between a deterministic machine (pink in Fig. 9) and a robust machine (red in Fig. 9) falling in one of the zones (A_{Exp}^{Ug} , B_{Exp}^{Ug} , C_{Exp}^{Ug} , D_{Exp}^{Ug} , E_{Exp}^{Ug}). The “Exp” index means that the design is issued from a robust optimization based on the expectance formulation. The “ Ug ” is to say that the considered uncertainties are geometrical parameters. The same boxplots are represented in Figure 12. However, this time, the designs were selected

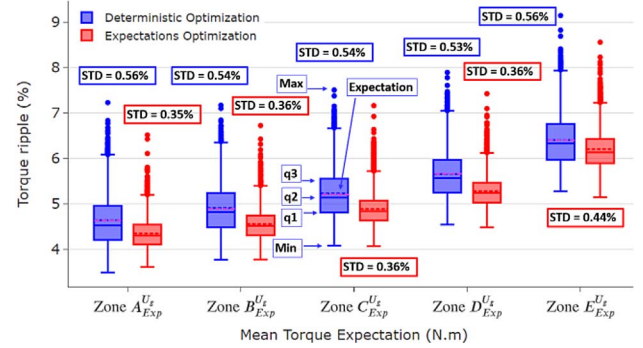


Fig. 11. Boxplots showing comparisons of predicted torque ripple values between deterministic (blue) and robust (red) machines from Figure 9 with similar predicted mean torque expectation values.

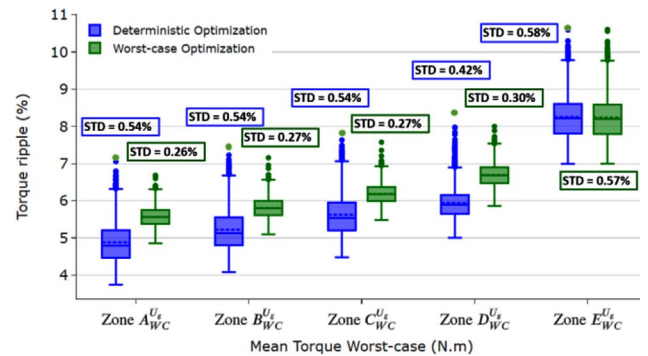


Fig. 12. Boxplots showing comparisons of predicted torque ripple values between deterministic (blue) and robust (green) machines from Figure 10 with similar predicted mean torque worst-case values.

from the deterministic Pareto front in Figure 10 (light green) and the robust one (dark green). All the boxplots in Figures 11 and 12 show the values of $q_{25\%}$ ($q1$), and $q_{50\%}$, which is the median of the sample ($q2$) and $q_{75\%}$ ($q3$) as represented in Figure 11 (boxplot zone C_{Exp}^{Ug}).

We can observe in Figure 11 that for each pair of machines, the robust one shows better overall performance than the deterministic one. For example, for the machines in zone A_{Exp}^{Ug} , we can notice that the median of the deterministic machine is almost the same as the $q3$ value of the robust machine (4.5%). This means that there is a 50% chance for a deterministic design to have a torque ripple value higher than 4.5%. For the robust design, the probability is only 25%. We can also notice that the expectation and Standard Deviation (STD) of the torque ripple associated with the robust optimization solution (4.3%, and 0.35%, respectively) outperform the expectation and STD obtained by the posterior analysis of the deterministic solution (4.6%, 0.56%, respectively). These results stress the importance of robust optimizations when dealing with uncertainties.

Figure 12 also shows pairs of boxplots comparing predicted torque ripple values between deterministic (light green) and robust (dark green) machines from Figure 10 with the same minimum (worst-case) predicted mean

torque value in each zone. For all the selected zones, the worst-case torque ripple value (maximum value for a batch) of a robust design is lower (or equal) than a deterministic one. Besides this, robust solutions also have much lower STD values than deterministic solutions, especially for zones with low worst-case mean torque. In zone A_{WC}^{Ug} for example, the robust machine (first green boxplot in Fig. 12) has an STD of 0.26% and a worst-case torque ripple of 6.7% compared to 0.54% and 7.2%, respectively for its deterministic counterpart (first blue boxplot in Fig. 12). Both optimizations lead practically to the same design for high values of worst-case mean torque like in zone E_{WC}^{Ug} . This can also be seen in Figure 11 with the Pareto fronts of the deterministic and robust optimizations getting very close with increasing torque.

The worst-case optimization has allowed to limit the performance degradation of the least performant machine in a sample, it has led to worse expectation values of torque ripple than those obtained by deterministic optimization. Instead of using the worst-case as an objective function, it could be used as a constraint in a constrained optimization problem while still using the expectations as an objective. Such formulation allows having good machine samples (expectation-wise) while limiting the worst performances we can have. Given that the quantile and worst-case are related (as the worst-case is equal to the 100% quantile in a minimization scheme), and we have found that the worst-case value could be set as a constraint; a quantile formulation (like 95% quantile) could be used as a more permissive constraint. This is important because finding samples having a 100% chance of satisfying a constraint could be difficult, especially when the tail of the PDF of the quantity of interest is large.

3.2 Robust optimizations considering uncertainties on geometrical parameters and material properties

In order to evaluate the impact of magnetic material uncertainties on the performances of the PMSynRelM motor, Figures 13 and 14 show the results of two robust optimizations performed using respectively the expectations and worst-case formulations. This time, the uncertain parameters are both the geometric parameters and the magnetic material properties. We added the same figures the Pareto fronts from Figures 9 and 10 for comparison.

Compared to results obtained considering only U_g as random variables, we can notice that the introduction of magnetic material uncertainties in the robust optimizations only affects the mean torque while the torque ripple stays almost the same. We can observe that the main effect of degradation of the material's magnetic properties is a horizontal translation towards lower values of the mean torque compared to the solutions obtained when we only considered U_g as random variables. In order to look deeper into this result, we present in Figure 15 the evolution of the estimated mean torque (metamodel) for machine A_{Exp}^{Ug} in Figure 9 in respect to α and β . As it can be seen, the mean torque metamodel has a linear behavior with respect to these two properties, and its maximum value is found when no degradation is applied ($\alpha = 1$ and $\beta = 0$). At $\alpha = 0$ and

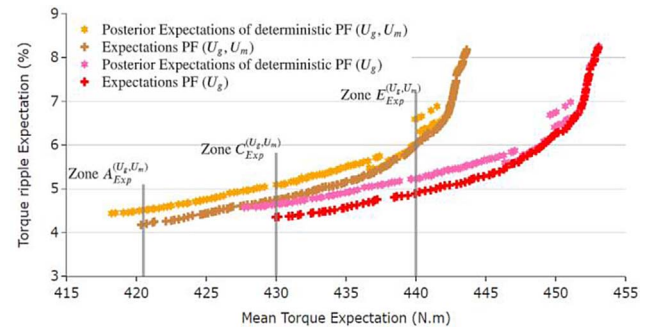


Fig. 13. Pareto fronts obtained by expectations optimization (brown) and expectations obtained by posterior perturbations from deterministic optimization results (orange) where uncertainties come from geometrical and materials' properties perturbations (U_g , U_m). Red and pink sets of points come from Figure 9. Dark gray zones highlight points with similar mean torque expectation values.

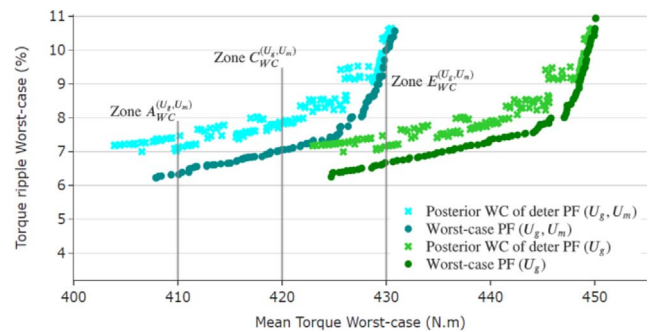


Fig. 14. Pareto fronts obtained by worst-cases optimization (darkcyan) and worst-case obtained by posterior perturbations from deterministic optimization (cyan) where uncertainties come from geometrical and materials' properties perturbations (U_g , U_m). Green and light green sets of points come from Figure 10. Dark gray zones highlight points with similar mean torque worst-case values.

$\beta = 1$ (full degradation), the torque is around 411 N.m with a 20 N.m decrease.

To confirm this observation all over the search space (X_g), a subset of 5000 points was analyzed (this subset was created using LHS maximin over X_g including as a reference to the machine related to zone A_{Exp}^{Ug} and coming from the expectations Pareto front, for which the relationship is linear (as seen in Fig. 15). For all these points, the second partial derivative with respect to U_m was evaluated. The derivative results at some U_m values are given in Figure 16. Each boxplot in this figure represents the derivative values for all 5000 points at a fixed α and β (values given on the horizontal axis). We can notice little variation for each boxplot, which means that the second derivatives are very similar all over the X_g search space. Moreover, the derivative values are all close to zero. This confirms that the mean torque can be considered as a linear function with respect to U_m :

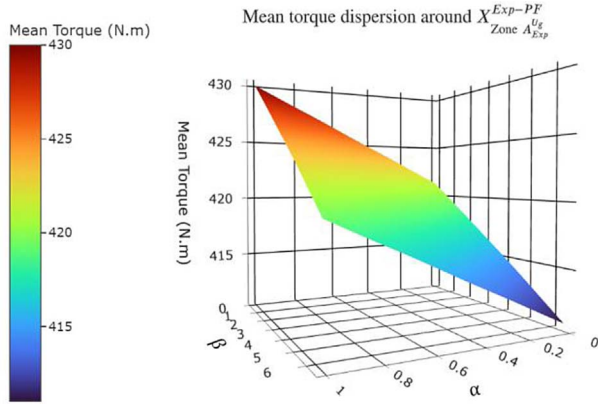


Fig. 15. Mean torque as a function of α and β for the design in zone A_{Exp}^{Ug} in Figure 9.

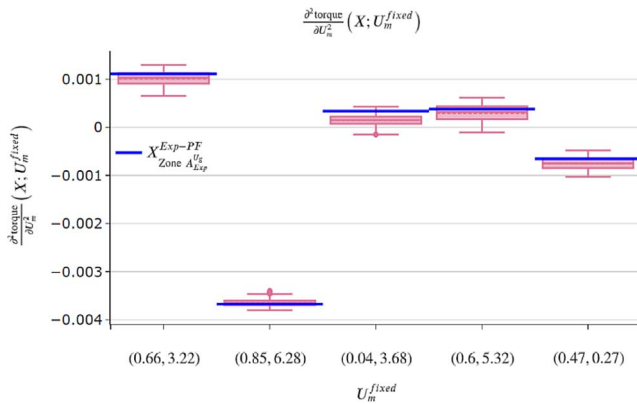


Fig. 16. Boxplots showing the variability (with respect to a batch of X_g samples) of the mean torque metamodel second partial derivative (with respect to U_m) evaluated at a given value of U_m . The blue horizontal lines stand for the machine related to zone A_{Exp}^{Ug} and coming from the expectations Pareto front.

$$f_1(X_g, U_m) \approx g(X_g) + A(X_g)U_m. \quad (8)$$

Having shown that the metamodel constructed for the mean torque can be approximated to a linear function with respect to U_m , let us calculate the variability of the operator $A(X_g)$ with respect to X_g . According to our linear approximation, the operator $A(X_g)$ is equivalent to the partial derivative with respect to U_m of the mean torque's metamodel. Figure 17 shows the results in the same manner as Figure 16, this time for the first derivative with respect to U_m . Once again, no significant variations are observed for all the boxplots meaning that the first partial derivative with respect to U_m is almost independent of X_g . The matrix $A(X_g)$ can be considered as independent of X_g :

$$f_1(X_g, U_m) \approx g(X_g) + AU_m. \quad (9)$$

In the same way, we observe that this first derivative is also almost independent of U_m (the derivative values are very close for all the boxplots). This is consistent with what was mentioned about the second derivative in Figure 16.

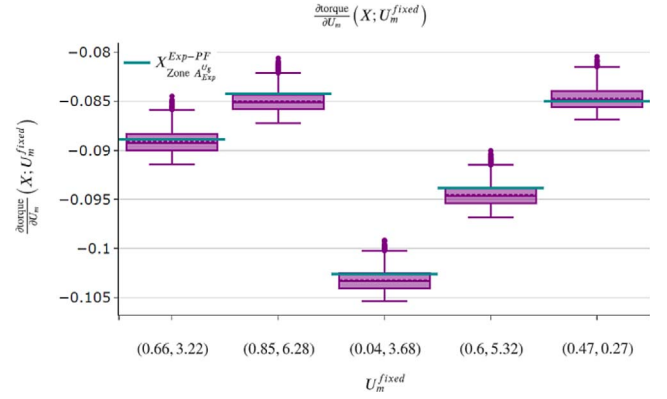


Fig. 17. Boxplots showing the variability (with respect to a batch of X_g samples) of the mean torque metamodel first partial derivative (with respect to U_m) evaluated at a given value of U_m . The dark cyan horizontal lines stand for the machine related to zone A_{Exp}^{Ug} and coming from the expectations Pareto front.

So far, we have shown the linear behavior of the mean torque (f_1) with respect to U_m . However, this does not explain the results obtained in Figures 13 and 14. According to our approximation, the expectation of f_1 with respect to U_m and U_g as well as its expectation with respect to U_g alone are written as follows:

$$E_{(U_g, U_m)}[f_1(X_g + U_g, U_m)] \approx E_{U_g}[g(X_g + U_g)] + A\mu_{U_m}, \quad (10)$$

$$E_{U_g}[f_1(X_g + U_g, U_{nom})] \approx E_{U_g}[g(X_g + U_g)] + AU_{nom} \quad (11)$$

with μ_{U_m} the mean of U_m uncertain variables. And, for the worst-case:

$$\begin{aligned} WC_{(U_g, U_m)}[f_1(X_g + U_g, U_m)] \\ \approx WC_{U_g}[g(X_g + U_g)] + WC_{U_m}[AU_m], \end{aligned} \quad (12)$$

$$WC_{U_g}[f_1(X_g + U_g, U_{nom})] \approx WC_{U_g}[g(X_g + U_g)] + AU_{nom}. \quad (13)$$

We note that the approximate expression for the expectation of f_1 with respect to U_g (11) where U_m is equal to the nominal material properties U_{nom} and the same expectation, but with respect to U_g and U_m (10) are the same except for terms that do not depend on X_g . The same is true for the worst-case expressions of f_1 (12) and (13). This means that their maximum values will be for the same X_g but with shifted torque values (for the case of U_g and U_m with respect to the case of U_g only).

3.3 Results verification by FEM simulation

All the results presented in the previous sections were based on surrogate models. We will therefore verify in this section some results using FEM simulations. Figures 18 and 19

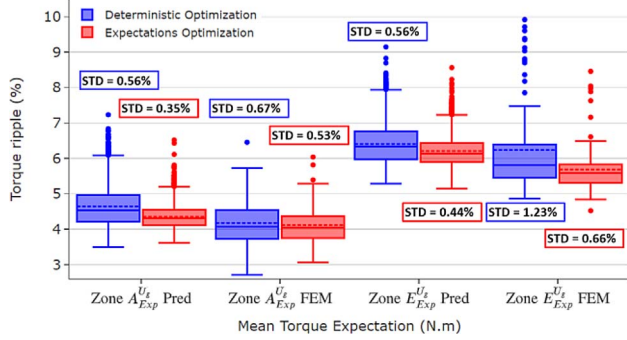


Fig. 18. Boxplots showing comparisons of torque ripple between FEM simulations and surrogate model predictions: deterministic (blue) and robust (red) machines with similar predicted mean torque/ mean torque expectation values.

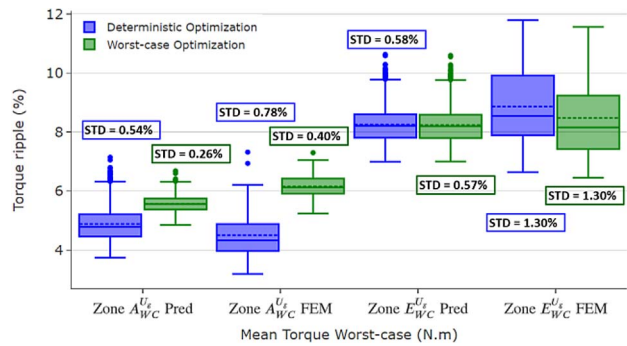


Fig. 19. Boxplots showing comparisons of torque ripple between FEM simulations and surrogate model predictions: deterministic (blue) and robust (green) machines with similar predicted mean torque worst-case values.

show the same boxplots based on the metamodels as in Figures 11 and 12. However, this time, FEM simulations were used to produce the same boxplot for comparison. Only two zones are represented in these figures : A_{Exp}^{Ug} and E_{Exp}^{Ug} . The STD values were also added for comparison.

The results from Figure 18 confirm what we have already noticed using the meta-models. For both zones A_{Exp}^{Ug} and E_{Exp}^{Ug} , the robust optimization presents similar or better solutions than the deterministic optimization in terms of robustness. For zone A_{Exp}^{Ug} , both machines have practically the same FEM-computed mean torque ripple with a smaller STD for the robust design. As for zone E_{Exp}^{Ug} , the robust design presents a lower expected mean torque. The FEM-computed q_3 value of the robust design is also equal to the median of the deterministic one (5.8%), meaning that 75% of the produced machines using the robust design would have a torque ripple lower than 5.8% vs. only 50% for the deterministic design. Although the results in Figure 18 were obtained from the robust optimization based on the expectation formulation, the design in zone E_{Exp}^{Ug} also present a particularly lower torque ripple in a worst-case scenario, with 8.4% vs. 9.9% for the deterministic design.

As seen in Section 3.1, using the optimization formulation with the worst-case scenario tends to reduce the STD of the robust designs compared to the deterministic ones, especially at low torque. This is also confirmed by FEM simulations in Figure 19. For the machines in zone A_{WC}^{Ug} , the robust design has a notably lower FEM-computed STD compared to the deterministic one (0.4% vs. 0.78%). As for the worst-case torque ripple value, both designs possess similar FEM-computed performances, around 7.3%. As for zone E_{WC}^{Ug} , similar results were obtained with deterministic and worst-case optimizations with a torque ripple of 11.8% and 11.6% respectively.

Regarding the precision of the meta-models compared to FEM simulations, some differences can be noticed. This lack of precision, especially for torque ripple, is somehow expected with a strategy using fixed metamodels in optimization, especially with the difficulty of fitting a torque ripple metamodel as seen in Section 2.1. A vast number of simulations is needed in this case to obtain an acceptable level of accuracy. An alternative approach could be to use an adaptative strategy to update the surrogate model with additional simulations during the optimization. The additional simulations will guide the algorithm towards the optimal zones while improving the meta-models' accuracy. By using this kind of approach, additional FEM simulations are performed only in promising points in the search space, limiting computational time and increasing the precision for optimal designs. This will be the subject of a future study.

Finally, we note that surrogate-based optimizations require much less computational time compared to FEM-based optimizations. For example, 17 h were needed to finalize the DOE simulations (*Intel(R) Xeon(R) W-2195 CPU @ 2.30 GHz and 18 cores*). The deterministic optimization using the meta-model took only 13 s for 300 iterations and 150 particles. Doing the same optimization using FEM simulations would have taken around 3 months to complete.

4 Conclusions

We have presented in this paper a comparison between different optimizations performed on a Permanent Magnet Assisted Synchronous Reluctance Machine. The first optimization used a deterministic formulation considering the design parameters as certain. In order to study the sensitivity of the machine to parameters uncertainties, robust optimizations were performed considering some geometric and magnetic parameter as uncertain. Two different formulations were adopted for the robust optimizations. In the first one, we used the expectations of the mean torque and torque ripple as objective functions. In the second formulation, the objective functions were defined as the worst-case values. In order to reduce computation time, surrogate models have been built for each of the objective functions. These surrogate models have been also used to perform a Sobol indices-based sensitivity analysis to detect the most impacting input parameters. Objective functions' expectations were computed with a quasi-Monte Carlo scheme while worst cases were calculated with an embedded

Particle Swarm Optimization algorithm. Both geometrical and magnetic property tolerances were shown to substantially influence the machines' performances, with the magnetic property tolerances having a greater impact on mean torque. More precisely, we found that the magnetic material properties tolerances affect the mean torque linearly. We have shown that the considered magnetic material degradation has almost the same impact on the performances over all the search space: The Pareto front of the robust optimization considering both types of uncertainties (geometrical U_g and magnetic material properties U_m) is simply obtained by shifting horizontally (toward lower torque values) the Pareto front of the robust optimization with only the geometrical parameters (U_g) as uncertain. This result cannot be generalized since the search space in this paper has been restricted to a small region around a reference design.

It should also be noted that while the predicted values of mean torque were consistent with Finite Element Method simulations, some differences were observed for torque ripple. This problem will be addressed in future work by using an adaptive strategy, like Bayesian Optimization, to update the surrogate models with additional simulations during the optimization. Nevertheless, the Finite Element Method simulations have globally confirmed the trend of the predicted results using the metamodels. The comparison of Pareto fronts has shown that robust solutions outperform deterministic solutions in terms of different robustness criteria such as quantiles, expectation, worst-case, and standard deviation values. However, in a constrained optimization problem, it is recommended to use the worst-case as a constraint and not as an objective. In a real problem like a production factory, the worst-case, which is very conservative, is replaced by a quantile. Such formulation allows increasing the average performance of a batch of prototypes for example, while ensuring that only a small percentage of them would not respect the defined requirements.

The aforementioned aspects show the importance of developing and applying new optimization techniques to electrical machines when dealing with uncertainties.

Acknowledgments

We would like to thank the Mexican National Science and Technology Council CONAHCYT (Consejo Nacional de Humanidades Ciencias y Tecnologías) for its support through the Ph.D. scholarship 834161.

References

- Levent A.H., Lordoglu A., Aydeniz M.G. (2020) Design and optimization of permanent magnet synchronous motor for electric vehicle applications, in 2nd Global Power Energy and Communication Conference (GPECOM), Izmir, Turkey, pp. 148–151. <https://doi.org/10.1109/GPECOM49333.2020.9247885>.
- Choi G., Bramerdorfer G. (2022) Comprehensive design and analysis of an interior permanent magnet synchronous machine for light-duty passenger EVs, *IEEE Access* **10**, 819–831. <https://doi.org/10.1109/ACCESS.2021.3137897>.
- Balasubramanian L., Bhuiyan N.A., Javied A., Fahmy A.A., Belblidia F., Sienz J. (2023) Design and optimization of interior permanent magnet (IPM) motor for electric vehicle applications, *CES Trans. Electr. Mach. Syst.* **7**, 2, 202–209. <https://doi.org/10.30941/CESTEMS.2023.00021>.
- Zhu X., Xiang Z., Zhang C., Quan L., Du Y., Gu W. (2017) Co-reduction of torque ripple for outer rotor flux-switching PM motor using systematic multi-level design and control schemes, *IEEE Trans. Ind. Electron.* **64**, 2, 1102–1112.
- Sun X., Wan B., Lei G., Tian X., Guo Y., Zhu J. (2021) Multiobjective and multiphysics design optimization of a switched reluctance motor for electric vehicle applications, *IEEE Trans. Energy Convers.* **36**, 4, 3294–3304.
- Faltakh N., Hlioui S., Gabsi M., Benlamine R., Vangraefschèpe F. (2017) Design of a low permanent magnet mass hybrid excited flux switching machine for a PHEV application, in 15th International Conference on Electrical Machines, Drives and Power Systems (ELMA), Sofia, Bulgaria, pp. 271–276. <https://doi.org/10.1109/ELMA.2017.7955447>.
- Cisse K.M., Hlioui S., Belhadi M., Mermaz Rollet G., Gabsi M., Cheng Y. (2021) Design optimization of multi-layer permanent magnet synchronous machines for electric vehicle applications, *Energies* **14**, 7116. <https://doi.org/10.3390/en14217116>.
- Ren Z., Zhang D., Koh C.S. (2013) A new sensitivity-based reliability calculation algorithm in the optimal design of electromagnetic devices, *J. Electr. Eng. Technol.* **8**, 2, 331–338.
- Yang Y., Zhang C., Bramerdorfer G., Bianchi N., Qu J., Zhao J., Zhang S. (2022) A computationally efficient surrogate model based robust optimization for permanent magnet synchronous machines, *IEEE Trans. Energy Convers.* **37**, 3, 1520–1532.
- Ren Z., Zhang D., Koh C.S. (2013) New reliability-based robust design optimization algorithms for electromagnetic devices utilizing worst case scenario approximation, *IEEE Trans. Magn.* **49**, 5, 2137–2140.
- Liang J., Mourelatos Z.P., Tu J. (2007) A single-loop method for reliability-based design optimization, *J. Mech. Des.* **129**, 12, 1215–1224.
- Lei G., Bramerdorfer G., Liu C., Guo Y., Zhu J. (2021) Robust design optimization of electrical machines: a comparative study and space reduction strategy, *IEEE Trans. Energy Convers.* **36**, 1, 300–313.
- Wu J., Zhu X., Fan D., Xiang Z., Xu L., Quan L. (2022) Robust optimization design for permanent magnet machine considering magnet material uncertainties, *IEEE Trans. Magn.* **58**, 2, 1–7.
- Jang G.U., Kim C.W., Bae D., Cho Y., Lee J.J., Cho S. (2020) Reliability-based robust design optimization for torque ripple reduction considering manufacturing uncertainty of interior permanent magnet synchronous motor, *J. Mech. Sci. Technol.* **34**, 3, 1249–1256.
- Crozier R., Mueller M. (2016) A new MATLAB and octave interface to a popular magnetics finite element code, in Proc. – 2016 22nd International Conference on Electrical Machines ICEM, pp. 1251–1256. <https://doi.org/10.1109/ICELMACH.2016.7732685>.
- Pronzato L., Müller W.G. (2012) Design of computer experiments: space filling and beyond, *Stat. Comput.* **22**, 3, 681–701.
- Park H.J., Yeo H.K., Jung S.Y., Chung T.K., Ro J.S., Jung H.K. (2018) A robust multimodal optimization algorithm based on a subdivision surrogate model and an improved sampling method, *IEEE Trans. Magn.* **54**, 3, 1–4.
- Sun X., Wan B., Lei G., Tian X., Guo Y., Zhu J. (2021) Multiobjective and multiphysics design optimization of a switched reluctance motor for electric vehicle applications, *IEEE Trans. Energy Convers.* **36**, 4, 3294–3304.
- Deb K., Pratap A., Agarwal S., Meyarivan T. (2002) A fast and elitist multiobjective genetic algorithm: a fast and elitist multiobjective genetic algorithm: NSGA-II, *IEEE Trans. Evol. Comput.* **6**, 2, 182–197.
- Lei G., Bramerdorfer G., Ma B., Guo Y., Zhu J. (2021) Robust design optimization of electrical machines: multi-objective approach, *IEEE Trans. Energy Convers.* **36**, 1, 375–401.
- Kennedy J., Eberhart R. (1995) Particle swarm optimization, in Proceedings of ICNN'95 – International Conference on Neural Networks, Perth, WA, Australia, 27 Nov.–1 Dec. 1995, pp. 1942–1948.