

**Enhanced heterologous gene expression in *Trichoderma reesei*
by promoting multicopy integration**

Hugues Mathis^{1#}, Delphine Naquin², Antoine Margeot¹ and Frederique Bidard¹

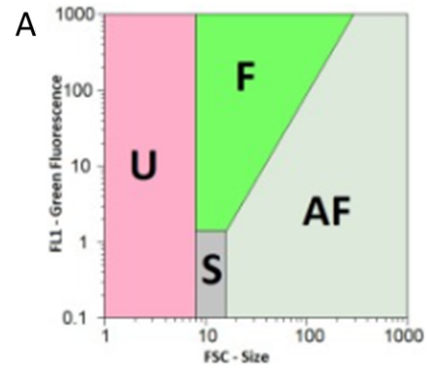
¹IFP Energies Nouvelles, 1 et 4 avenue de Bois-Préau, 92852 Rueil-Malmaison, France

²Institute for Integrative Biology of the Cell (I2BC), CEA, CNRS, Univ. Paris-Sud, Université Paris-Saclay,
91198, Gif-sur-Yvette cedex, France

Corresponding author: H. Mathis: Hugues.mathis@ifpen.fr, +33 1 47525340

Figure S1

A: Gating parameters to discriminate fluorescent from auto-fluorescent spores: S region contained ungerminated spores with low fluorescence and corresponds to the control spore population at T0, AF gate contained germinated auto-fluorescent spores of the control strains and F region contained fluorescent spores of the transformants, U region contained unsustainable spores



B: Cytograms of CL847 and transformants over the germination time course at T0, T16 and T24 hours. E1 to E9 are the transformants obtained from CL847, expressing egfp.

